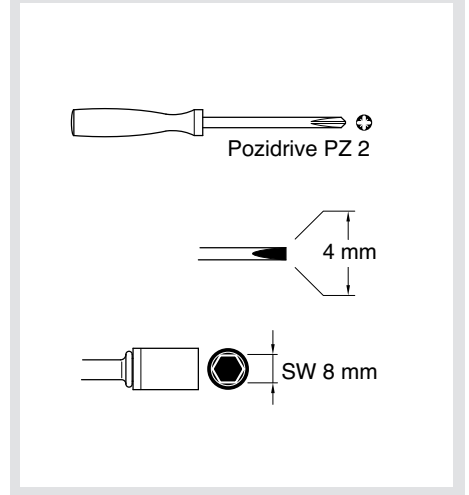
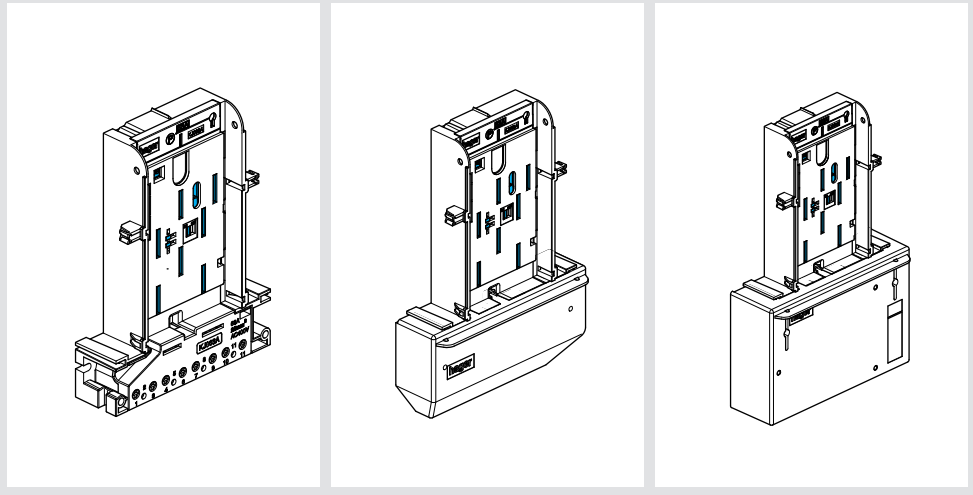
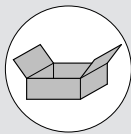
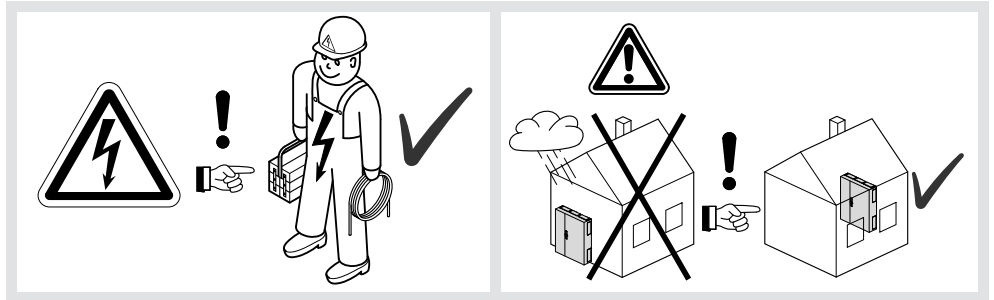


# EHZ-Adapter

- (DE) Montageanleitung
- (FR) Notice d'instructions
- (GB) Mounting instructions
- (NL) Montage instructie
- (DK) Monteringsvejledning
- (FI) Asennusohje
- (NO) Montasjeanvisning
- (SE) Monterings instruktioner
- (IT) Istruzioni di montaggio
- (ES) Instrucciones de montaje
- (PT) Instruções de montagem
- (CZ) Montážní návod
- (BA) Uputstvo za montažu
- (HR) Upute za montažu
- (HU) Szerelési útmutató
- (LT) Montavimo instrukcija
- (LV) Montāžas instrukcija
- (PL) Instrukcja montażowa
- (RO) Instrucțiuni de montare
- (SK) Návod na montáž
- (RU) Инструкция по монтажу
- (BG) Инструкции за монтаж
- (GR) Οδηγίες χώνευσης
- (SI) Navodilo za montažo
- (EE) Paigaldusjuhised
- (IS) Leiðbeiningar



## Adapter-Montage mit Leitungsanschluss (Bild 01–10)

**Sicherheitshinweis**  
Schalten Sie die Anlage spannungsfrei.

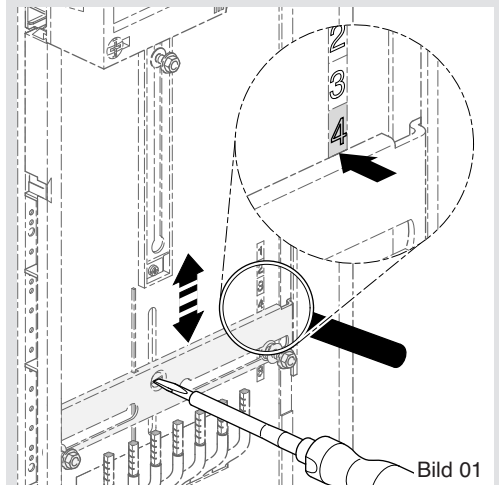
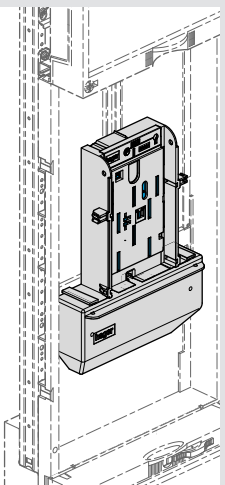


Bild 01

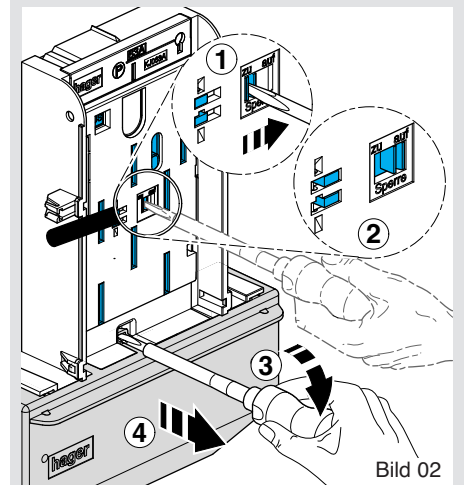


Bild 02

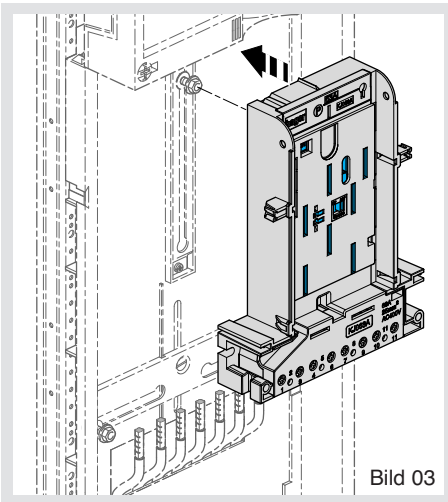


Bild 03

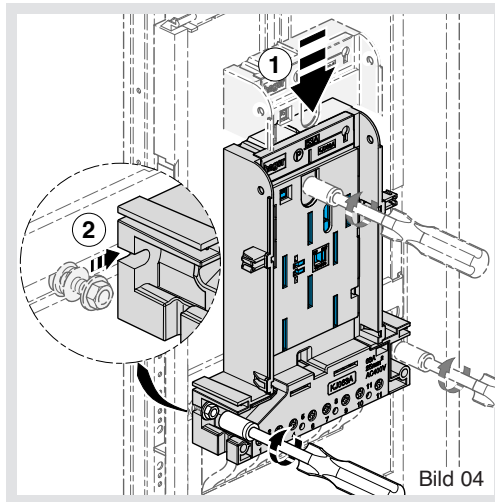


Bild 04

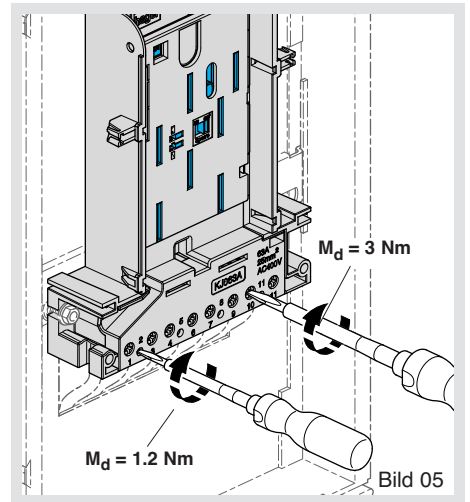


Bild 05

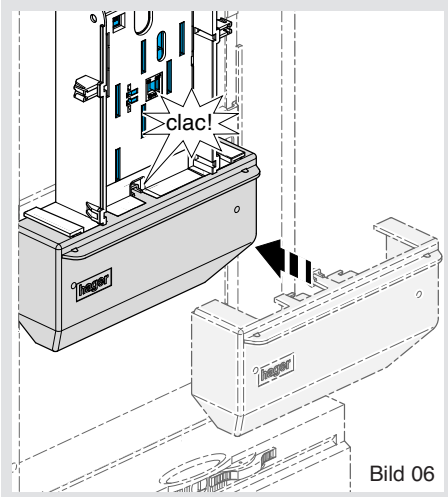


Bild 06

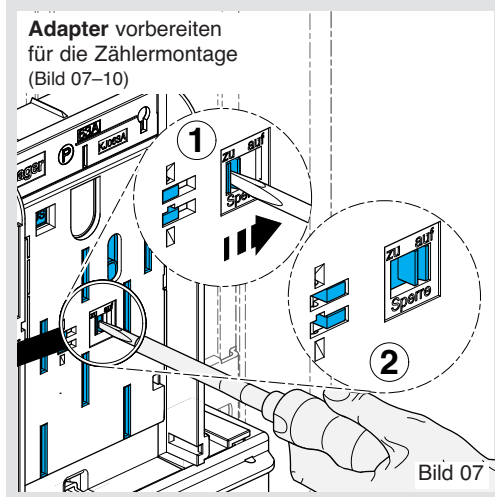


Bild 07

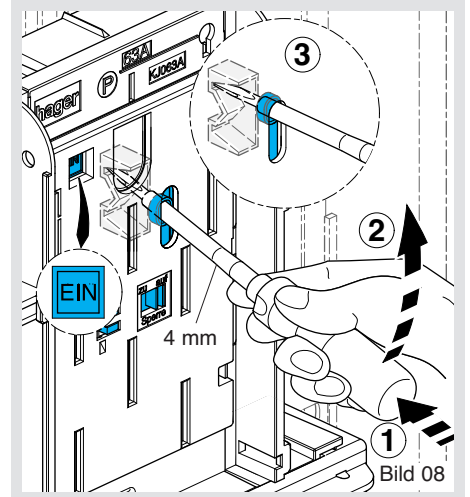


Bild 08

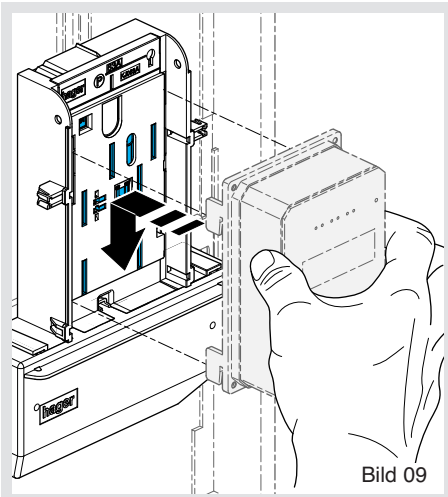


Bild 09

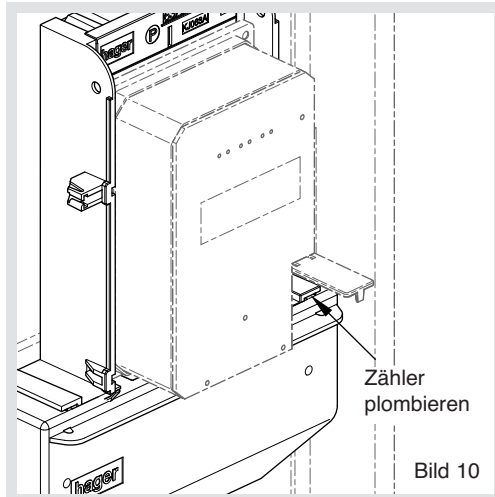


Bild 10

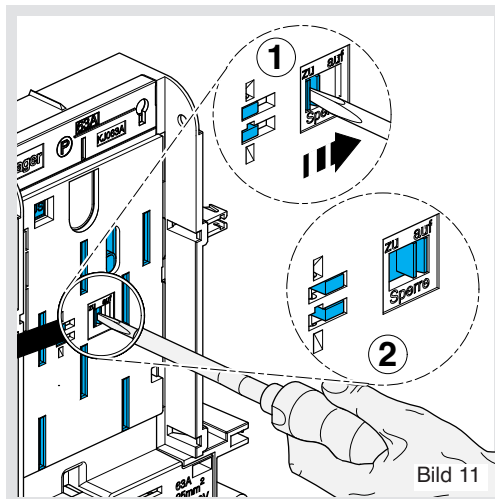
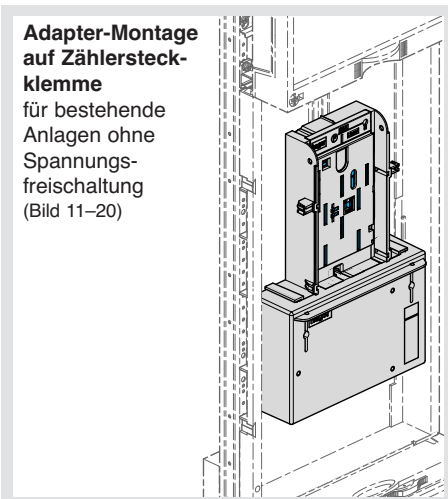


Bild 11

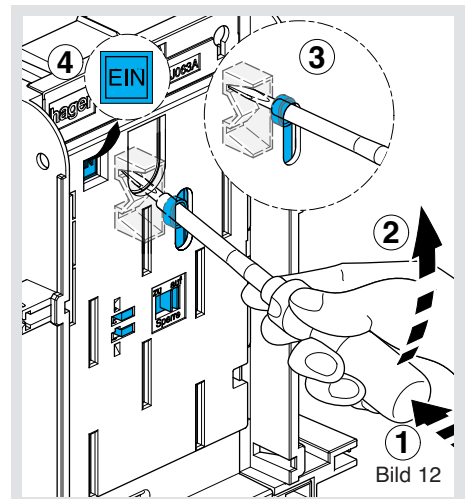


Bild 12

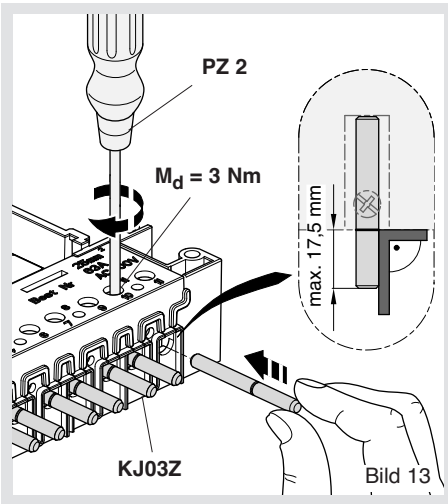


Bild 13

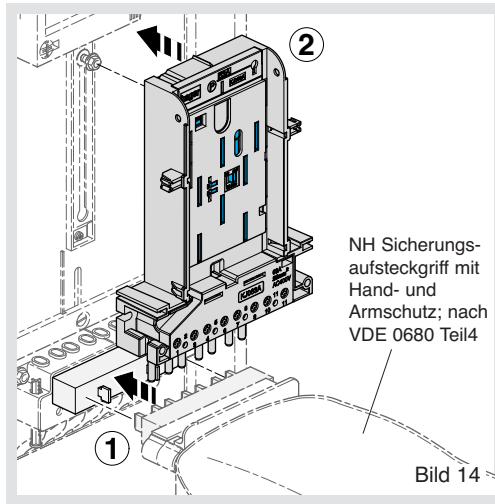


Bild 14

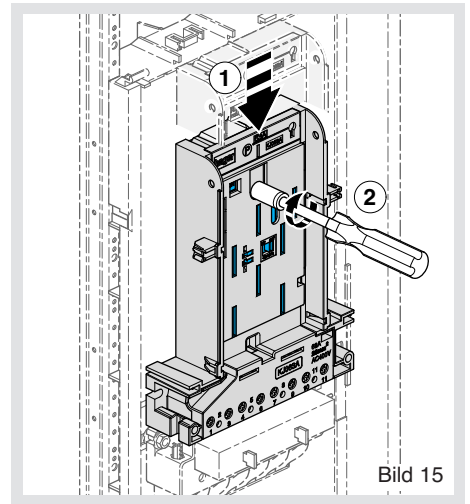


Bild 15

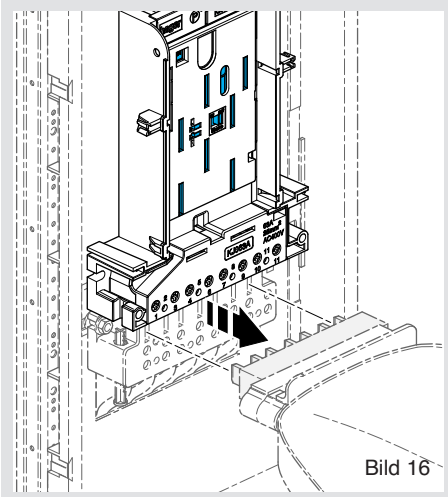


Bild 16

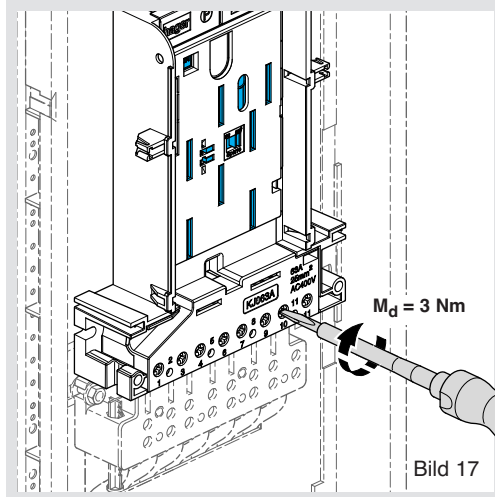


Bild 17

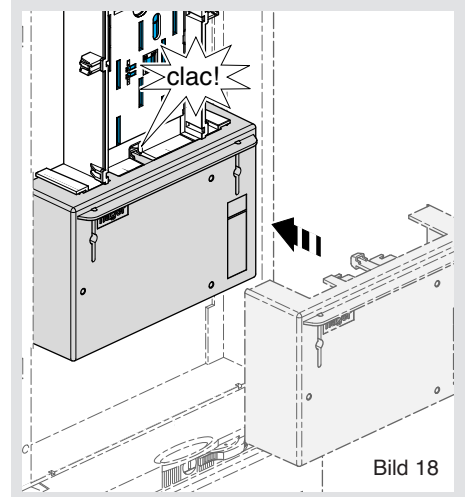


Bild 18

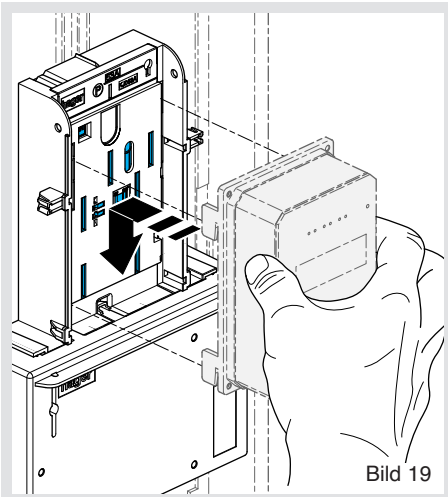


Bild 19

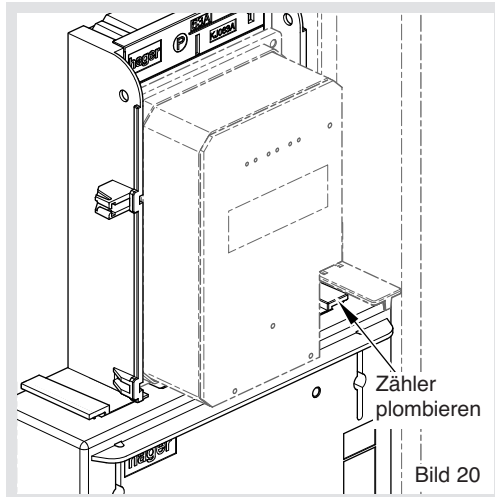


Bild 20

**Adapter außerbetriebsetzen und plombieren ohne Zähler (Stilllegung).**  
(Bild 21–23)

**⚠ Sicherheitshinweis**  
Schalten Sie die Anlage spannungsfrei.

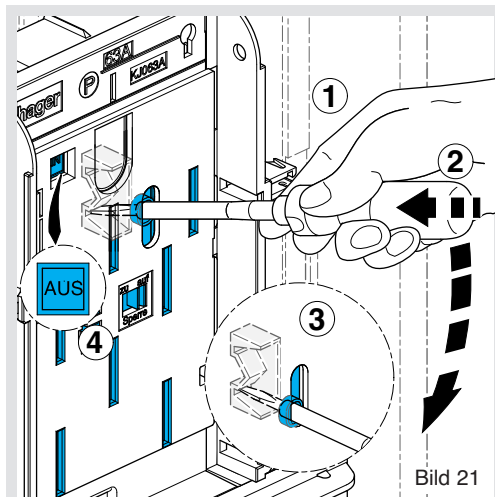
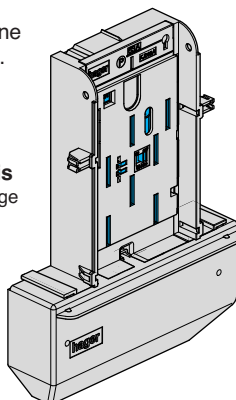


Bild 21

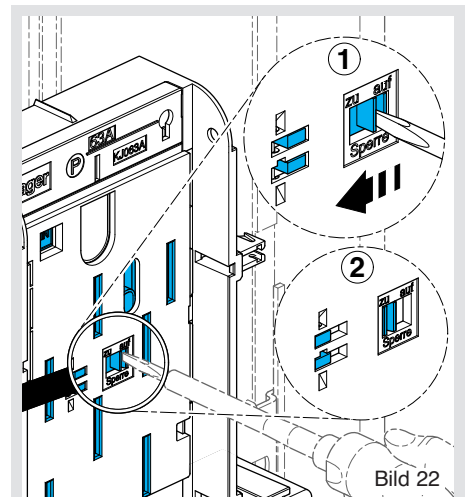
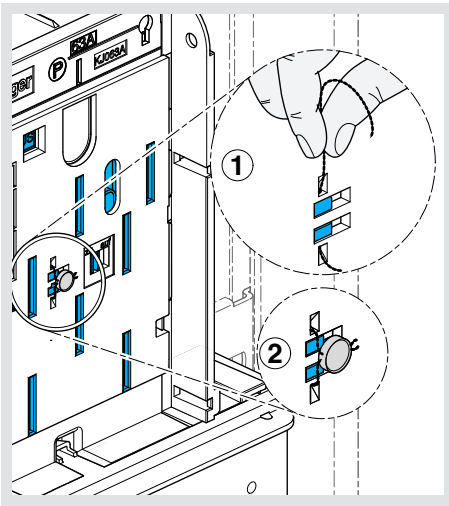
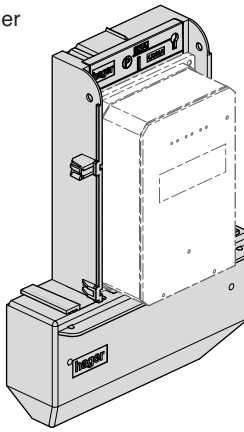


Bild 22



**Adapter sperren**  
mit oder ohne Zähler  
(Bild 24-28).

- Schloss
- VNB-Sperreil
- Vorhängeschloss



**Adapter sperren mit Schloss**

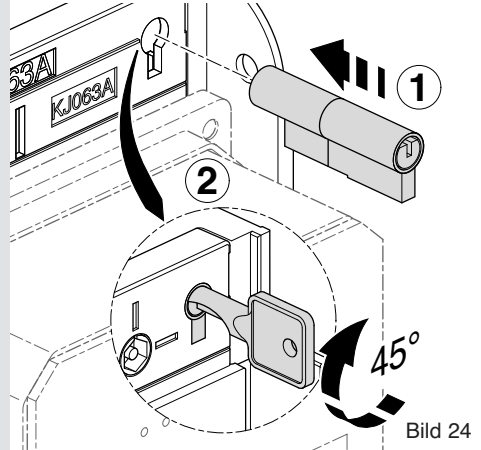


Bild 24

**Adapter sperren mit Steckplombe**

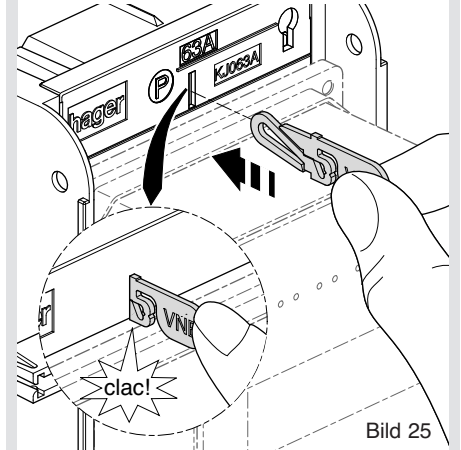


Bild 25

**Demontage der Steckplombe**

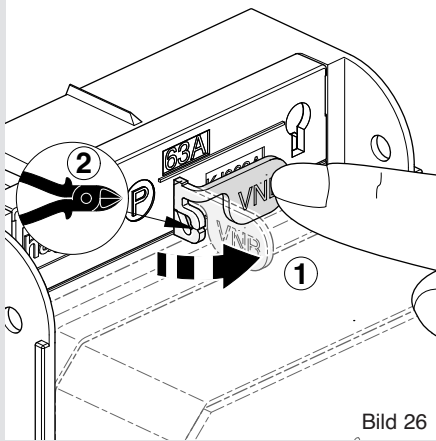


Bild 26

**Demontage der Steckplombe**

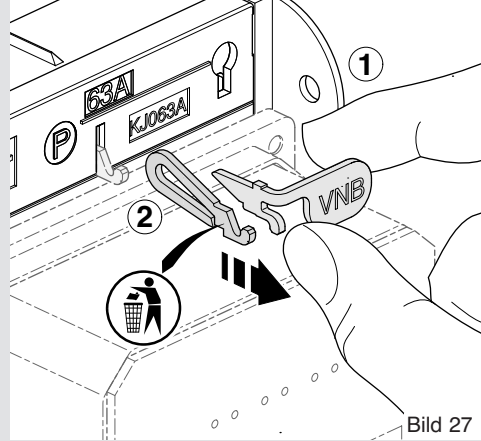


Bild 27

**Adapter sperren mit Vorhängeschloss**

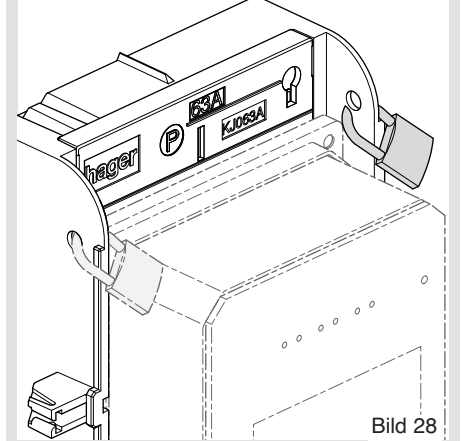


Bild 28

**Parkstellung**  
(Bild 29-31)

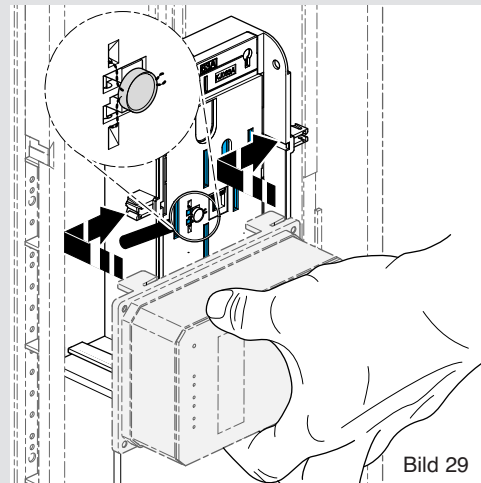
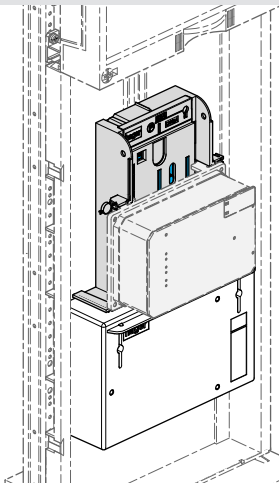


Bild 29

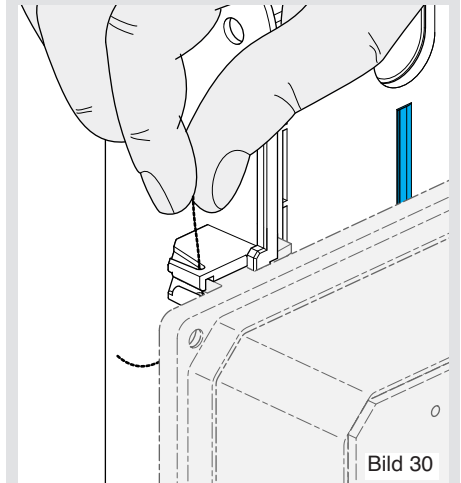


Bild 30

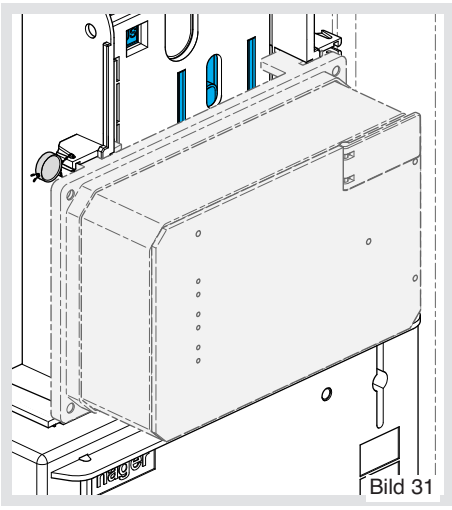


Bild 31