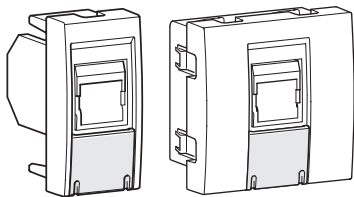
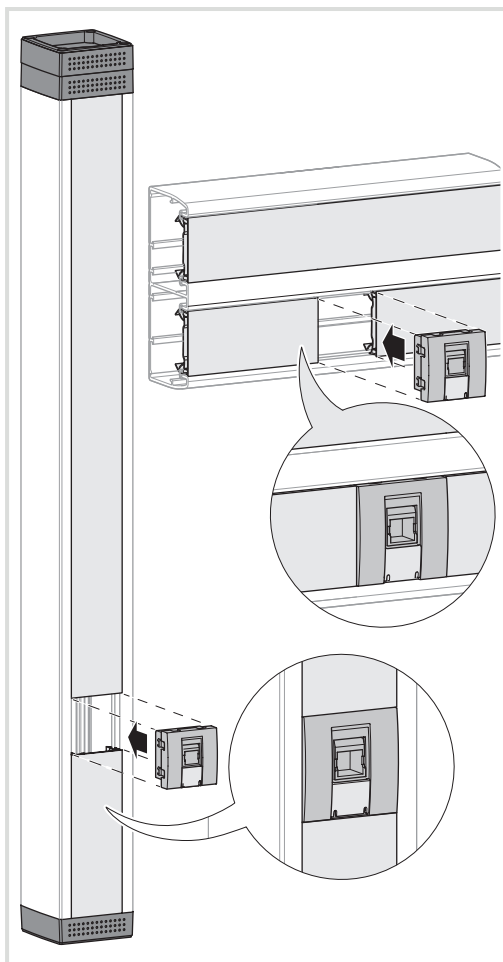


## RJ45 Cat. 6

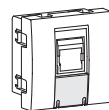
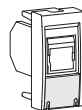
6LE001902B



4504x, 4506x,  
4507x



## RJ 45

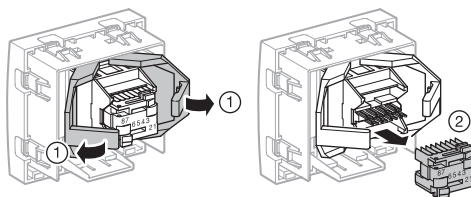
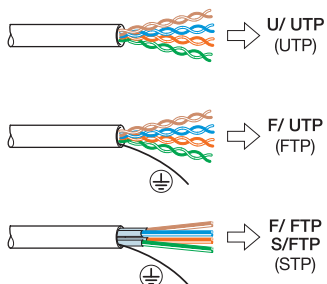


	U/ UTP (UTP)	Cat. 6		45070 45072 45073
	F/ UTP (FTP)	Cat. 6	45045 45047 45048	45040 45042 45043
	F/ FTP S/FTP (STP)	Cat. 6	45065 45067 45068	45060 45062 45063

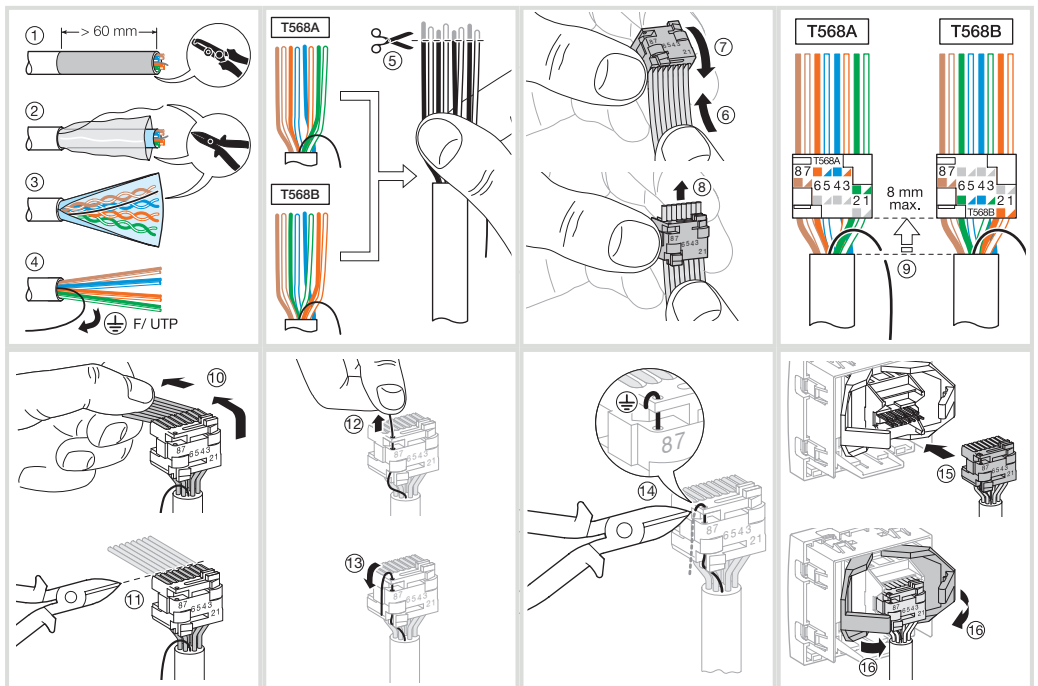
### Caractéristiques techniques

- Conforme aux normes : ISO 11801 éd. 2.0, EN 50173.
- Compatible RJ45, RJ11 et RJ12.
- Contacts auto-dénudants sans outil.
- Code de couleur normalisé : EIA/TIA 568 A&B.
- Catégorie 6 : Classe E à 250 Mhz.

### Type de câble



U/ UTP - F/ UTP (UTP - FTP)



F/ FTP - S/ FTP (STP)

