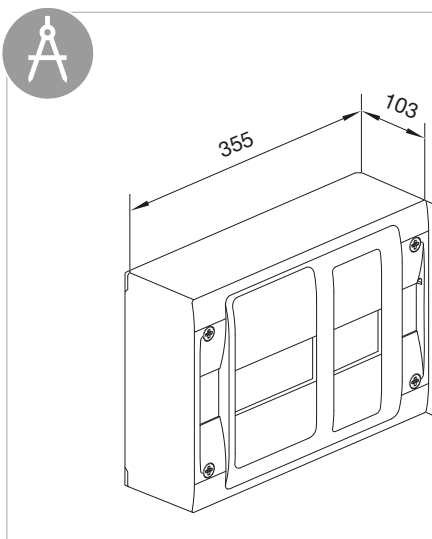
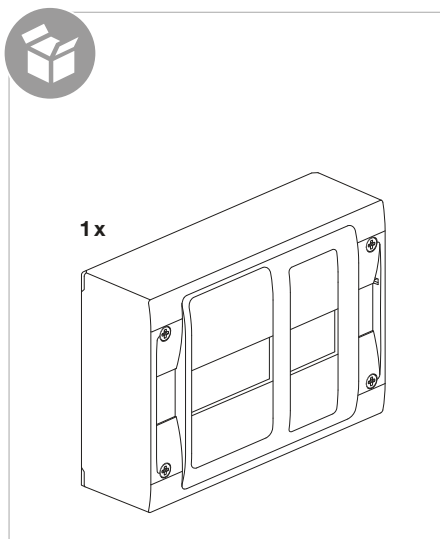
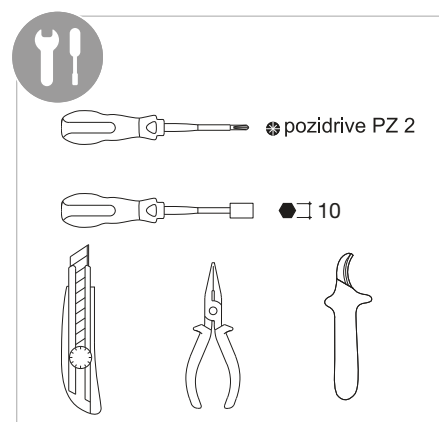
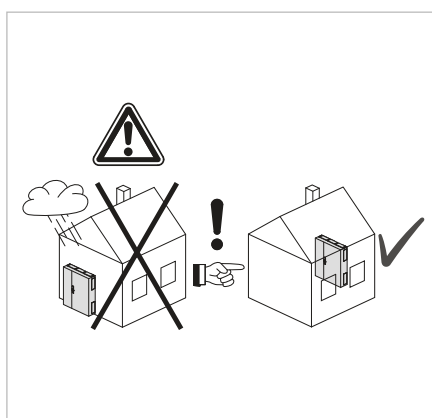
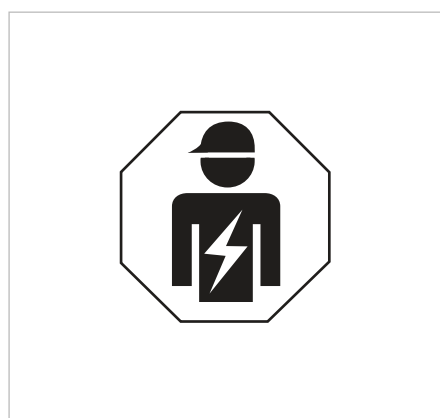


GD018A

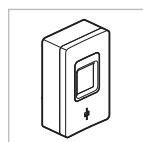
(FR)

Notice d'instructions

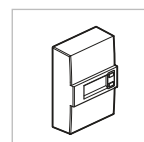
Panneau de contrôle (Type A) monophasé pour branchement à puissance limitée (tarif bleu) pour compteur Linky ou CBE et disjoncteur de branchement maximum 60 A avec habillage pour la gamme gamma+ 18.



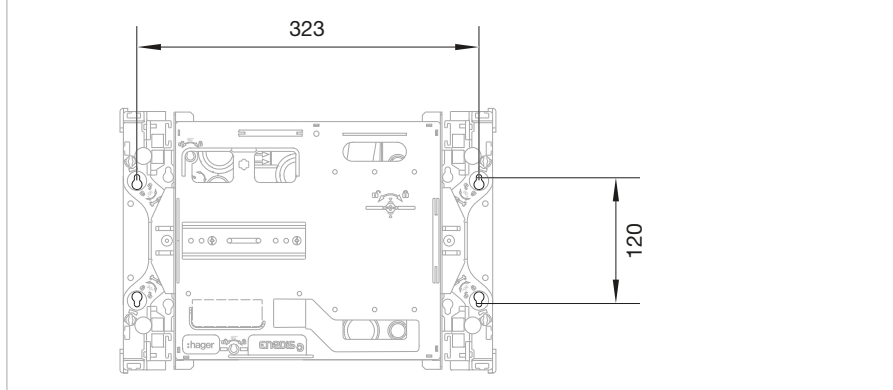
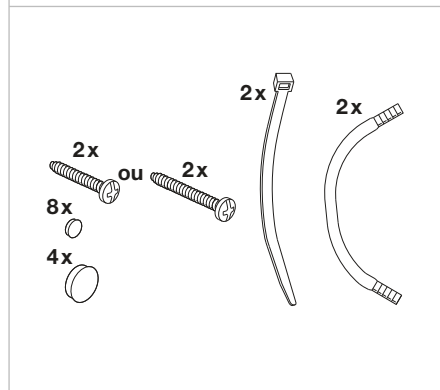
Fixations:	
323 x 120	- sur mur
quick fix	- sur goulotte
	- sur rehausse

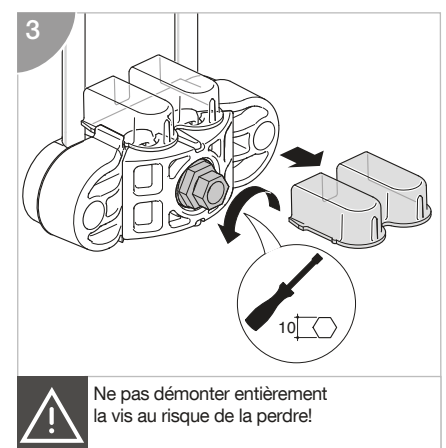
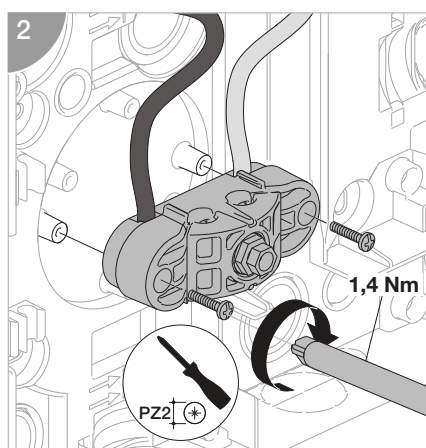
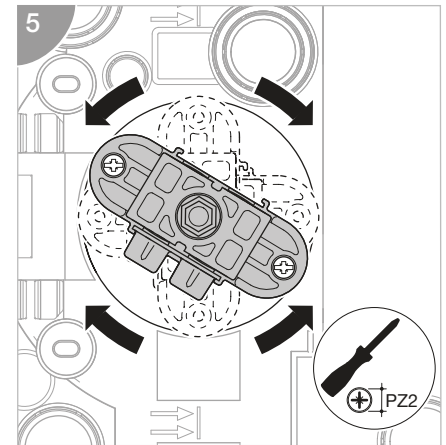
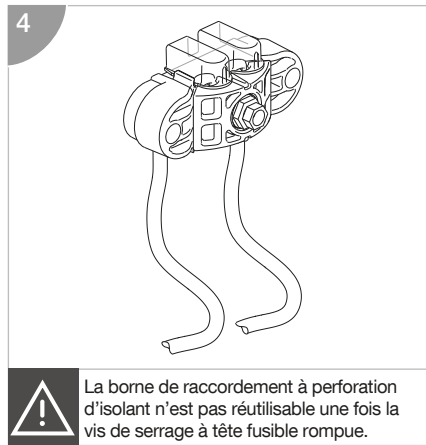
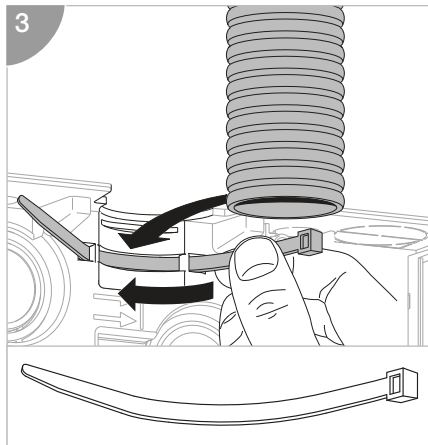
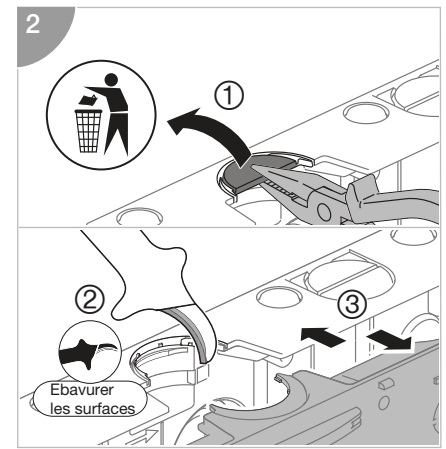
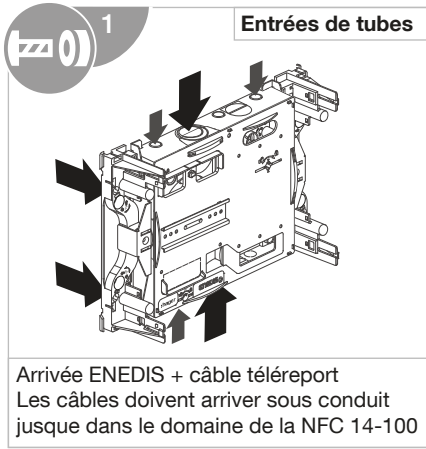
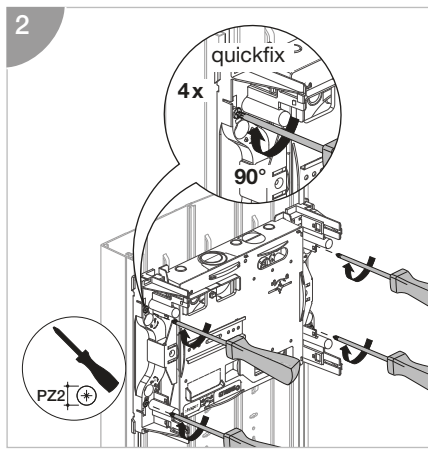
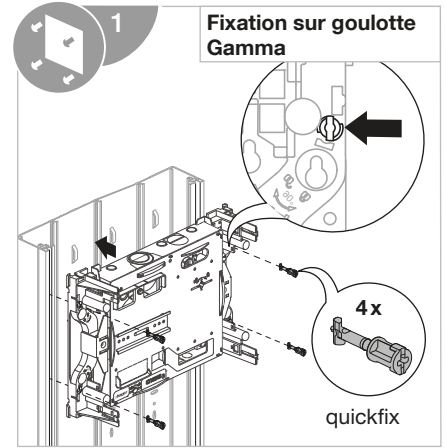
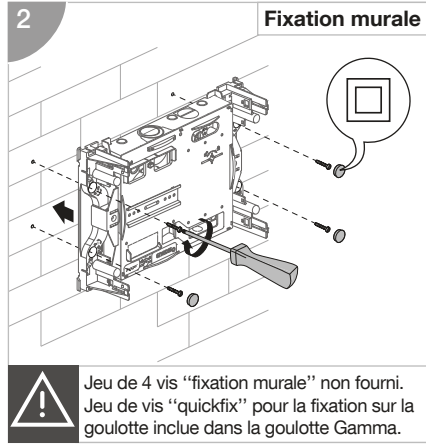
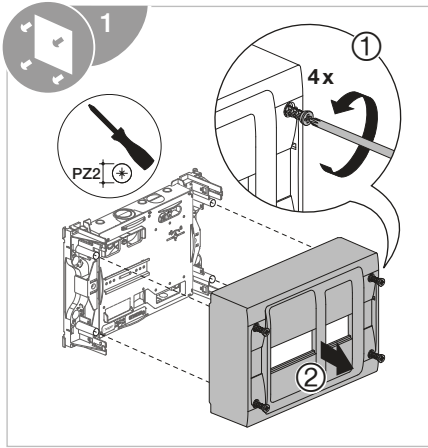


Compteur **Linky +**
Disjoncteur de
branchement



Compteur **CBE +**
Disjoncteur de
branchement





4

Cu	Câble classe 2 à âme	10-35mm ²
Al	Câble classe 2 à âme	16-35mm ²
Al	Massif	16-35mm ²

5

1

Mise en oeuvre des câbles du connecteur

2

3

4

1

Mise en oeuvre de la goulotte domaine NF C15-100

2

3

1

Mise en place des connecteurs de liaison compteur-disjoncteur

2

3

