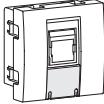

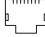
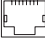


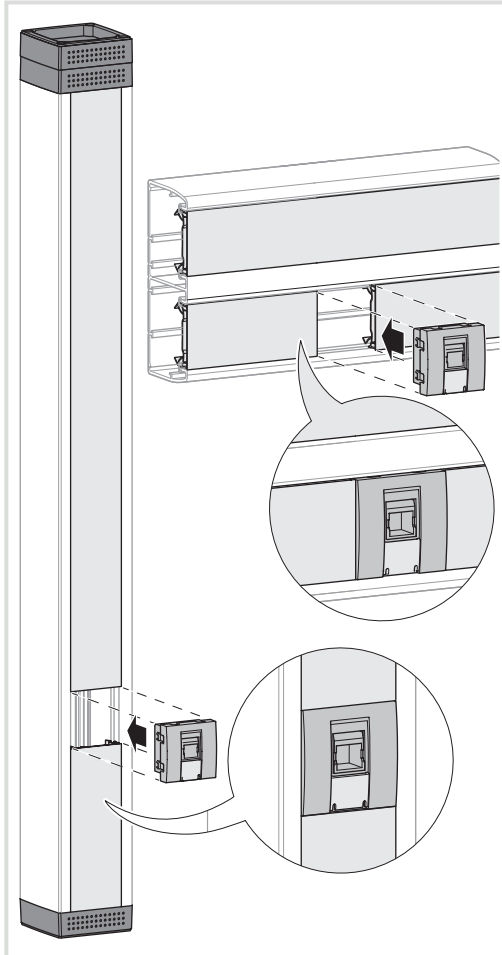
RJ45 Cat. 6A

4504x, 4506x,
4507x

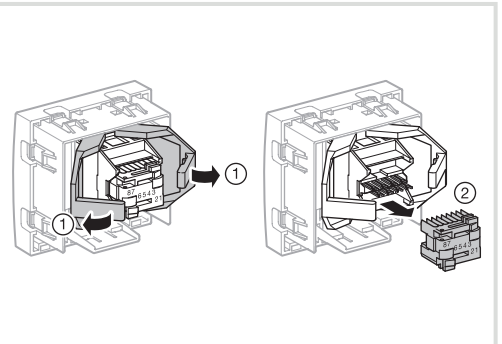
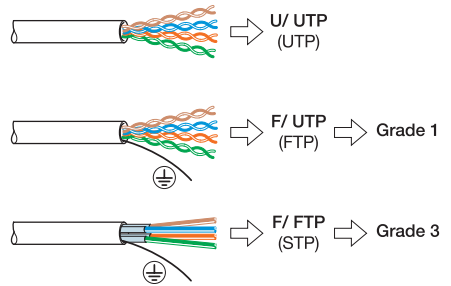
RJ 45		
	U/ UTP (UTP)	Cat. 6 4507x
	F/ UTP (FTP)	Cat. 6 4504x
	F/ FTP (STP)	Cat. 6 4506x

Caractéristiques techniques

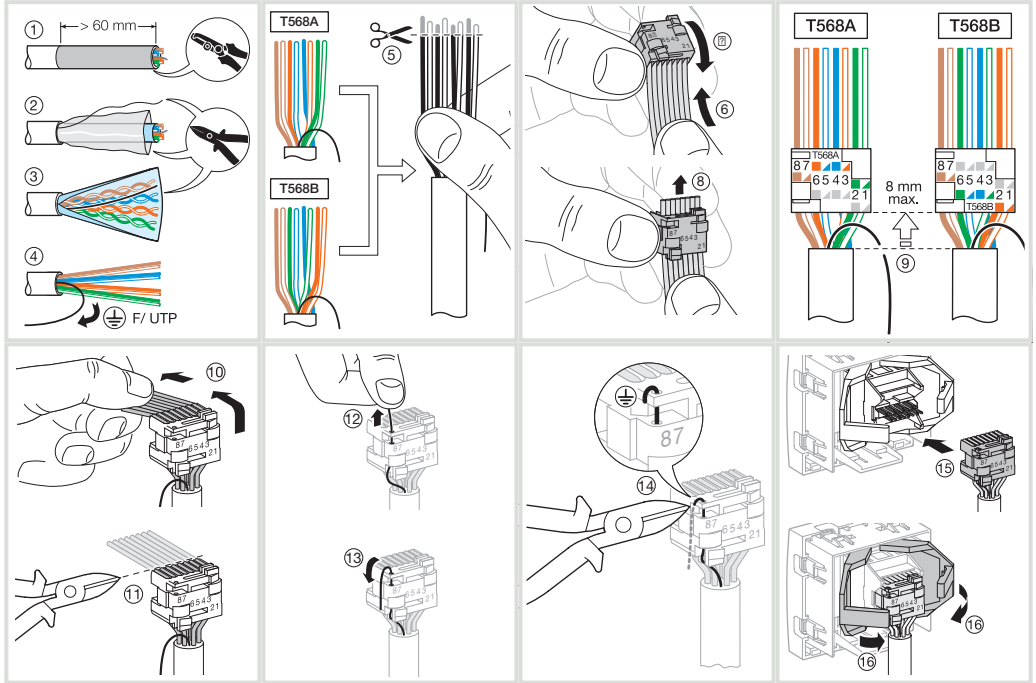
- Conforme aux normes : ISO 11801 éd. 2.0, EN 50173.
- Compatible RJ45, RJ11 et RJ12.
- Contacts auto-dénudants sans outil.
- Code de couleur normalisé : EIA/TIA 568 A&B.
- Catégorie 5e : Classe D à 100 MHz.
- Catégorie 6 : Classe E à 250 MHz.



Type de câble



U/ UTP - F/ UTP (UTP - FTP)



F/ FTP (STP)

