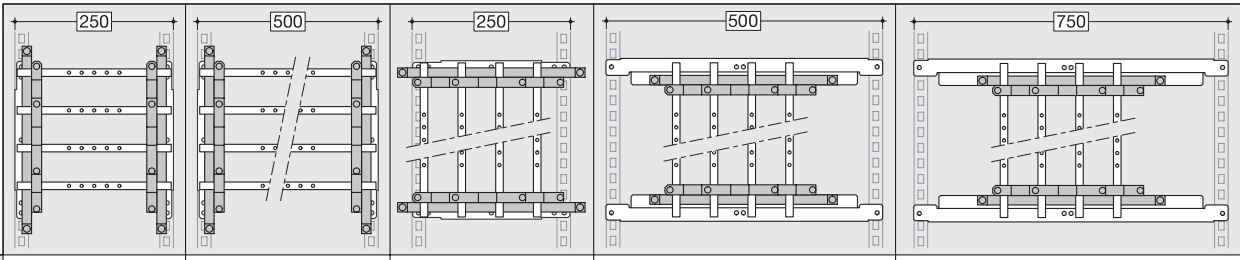
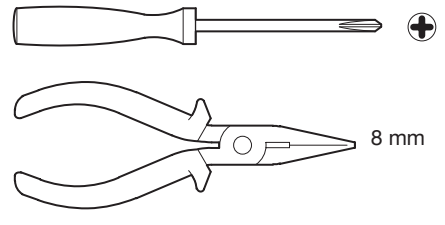
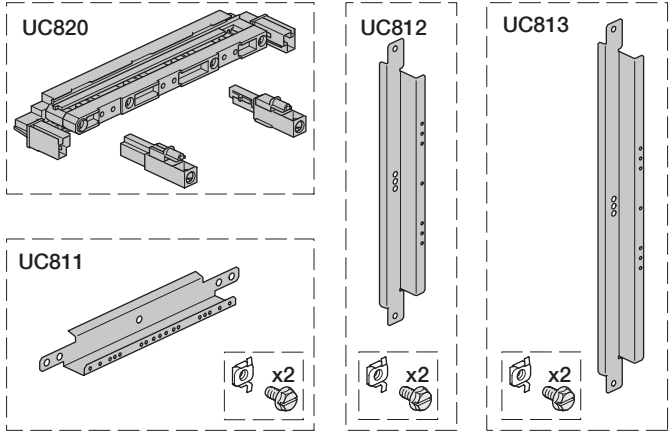


- (FR)
- (ES)
- (PT)
- (EL)

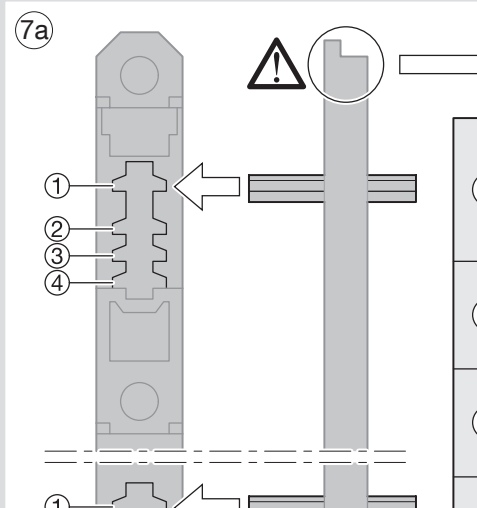
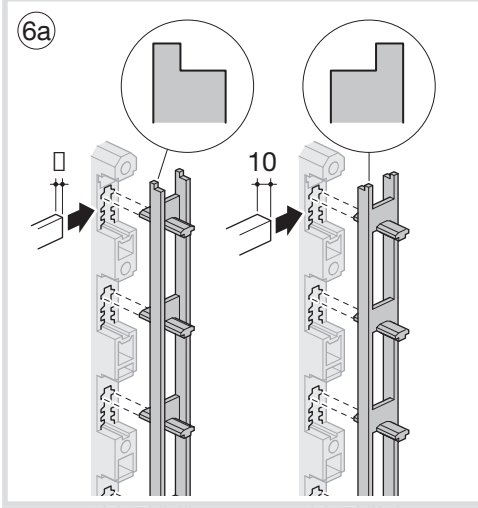
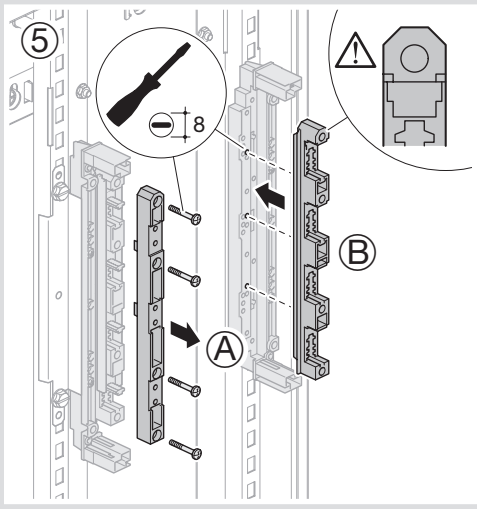
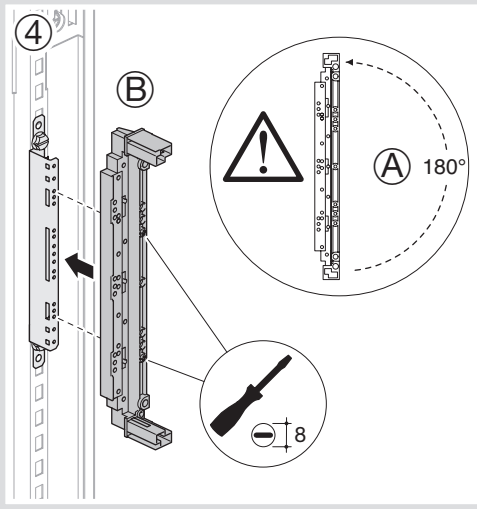
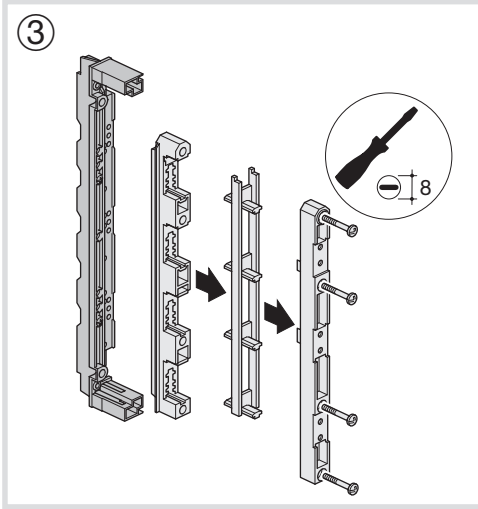
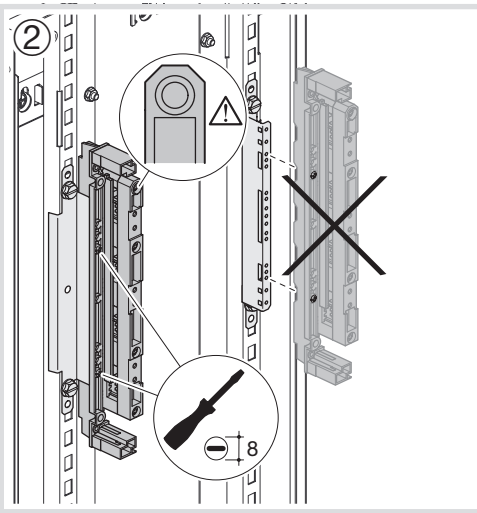
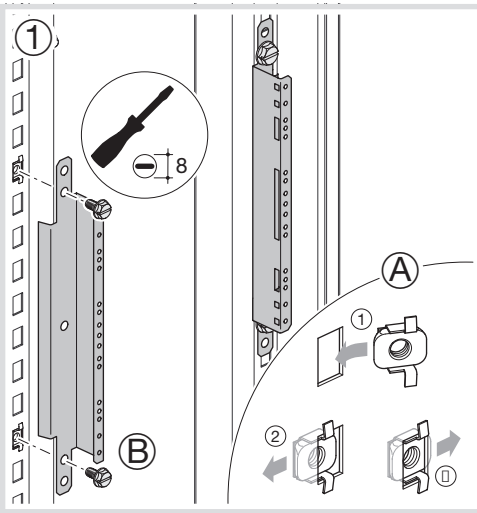
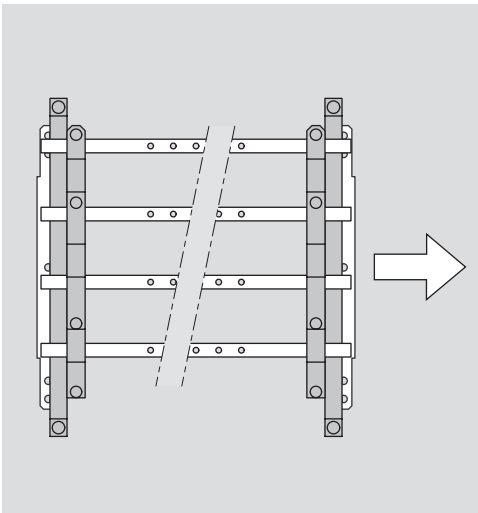
Jeu de barres à plat 160 à 630 A
 Embarrado 160 a 630 A
 Barramento deitado de 160 a 630 A
 Σετ μπαρών 160 έως 630 A επίπεδης τοποθέτησης εντός ερμαρίων

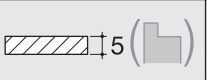

Notice d'instructions
 Instrucciones de uso
 Instruções
 Οδηγίες χρήσεως

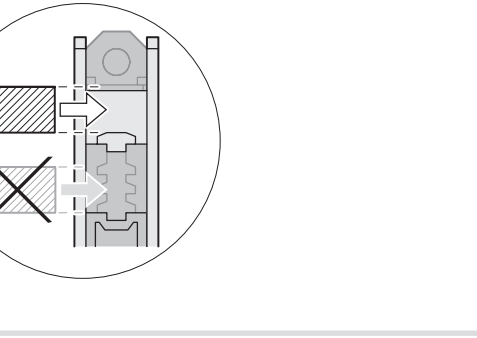
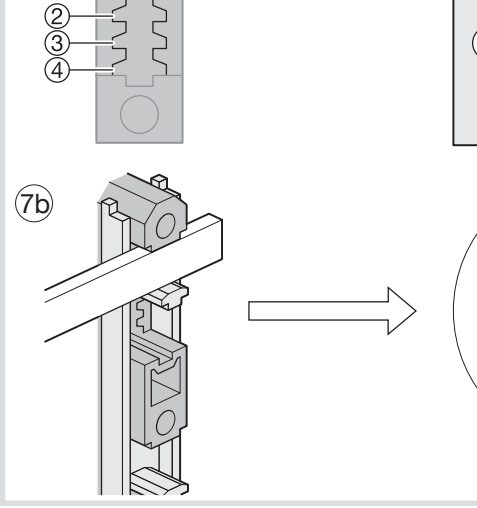
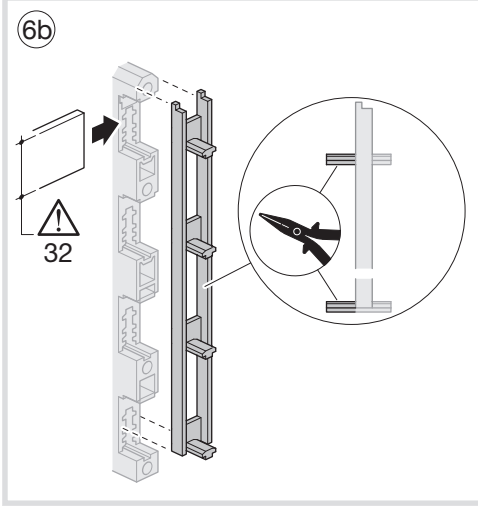
UC811+UC820 / UC812+UC820 / UC813+UC820



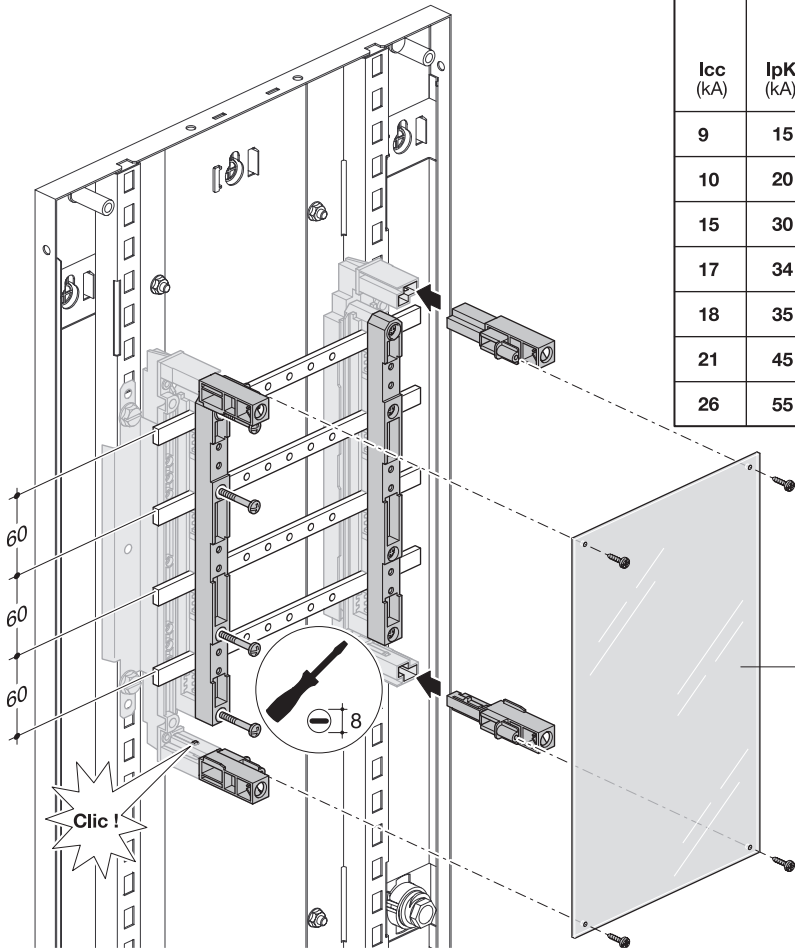
	2x UC820	2x UC820	2x (3x) UC820	2x (3x) UC820	2x (3x) UC820
	2x UC811	2x UC811	2x (3x) UC811	/	/
	/	/	/	2x (3x) UC812	/
	/	/	/	/	2x (3x) UC813



		
①	4x KS72B (12 x 5 x 245 mm) 4x KS72C (12 x 5 x 1000 mm)	
②	4x UC832 (20 x 5 x 1000 mm)	
③		
④	4x UM30A3 (30 x 5 x 280 mm) 4x UM30A1 (30 x 5 x 430 mm) 4x UM30A2 (30 x 5 x 880 mm)	4x UM30A4 (30 x 10 x 430 mm) 4x UM30A5 (30 x 10 x 880 mm)

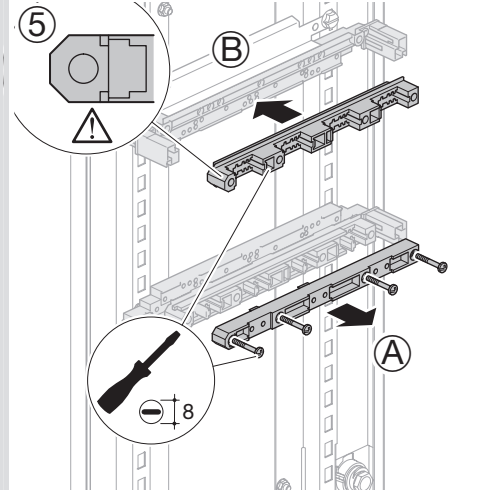
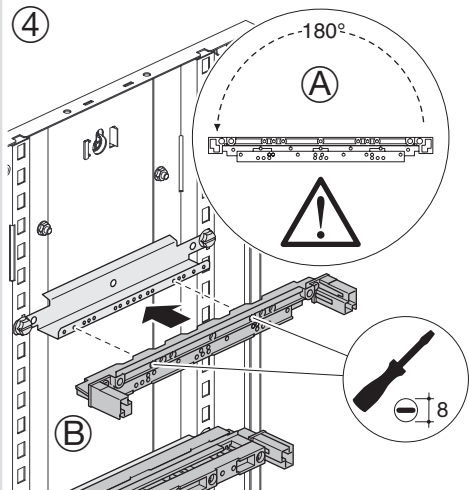
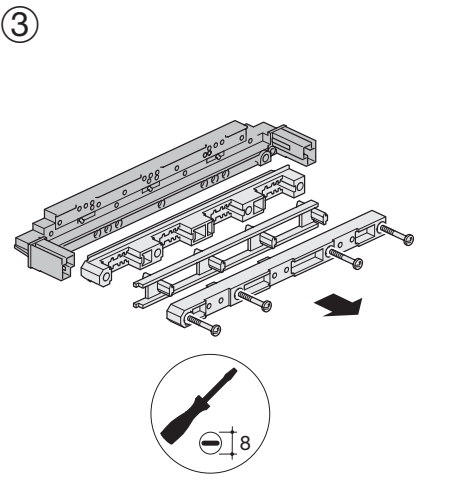
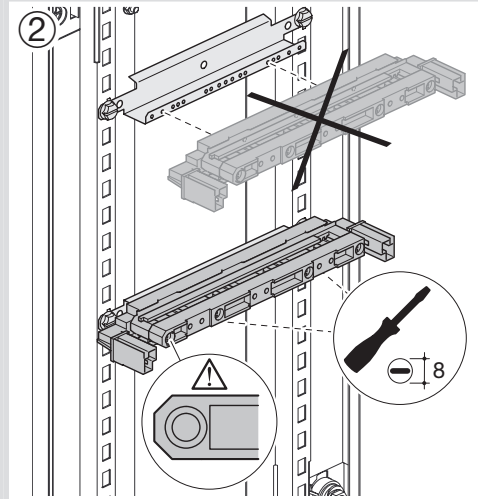
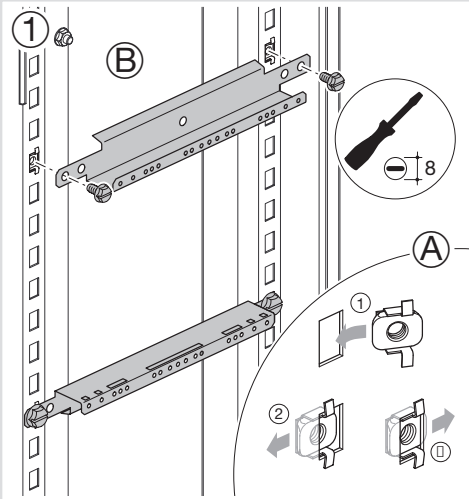
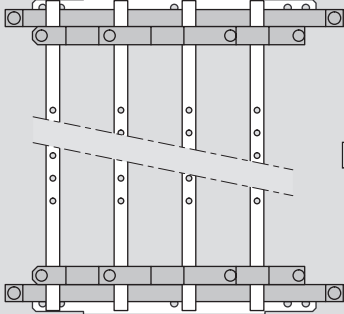


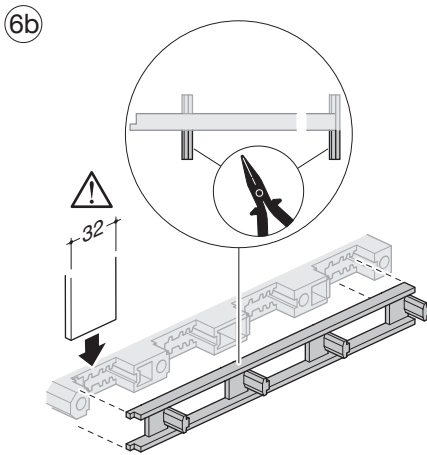
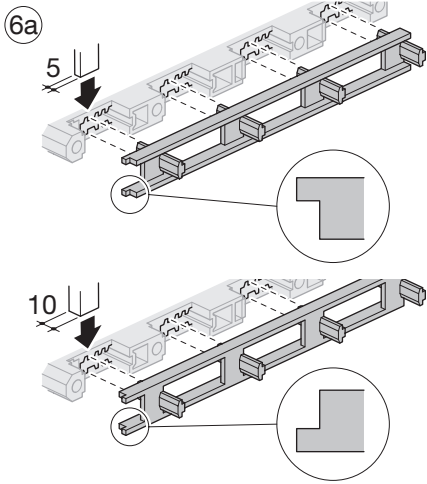
8



Icc (kA)	IpK (kA)	160 A	250 A	400 A	630 A
		D max 12 x 5	D max 20 x 5	D max 32 x 5	D max 32 x 10
9	15	500 mm	/	/	/
10	20	250 mm	/	/	/
15	30	/	500 mm	/	/
17	34	/	/	500 mm	/
18	35	/	250 mm	/	/
21	45	/	/	250 mm	500 mm
26	55	/	/	/	250 mm

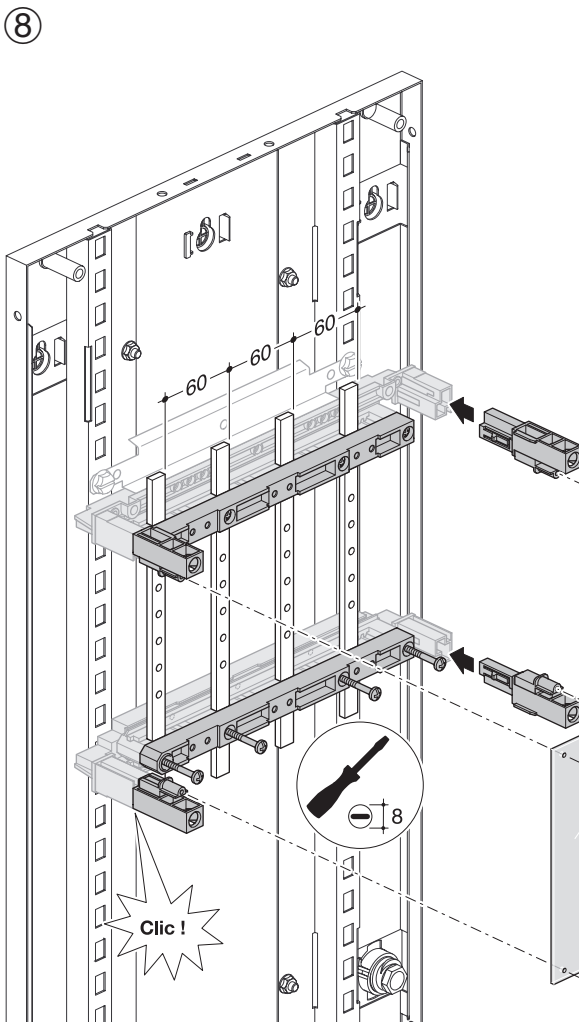
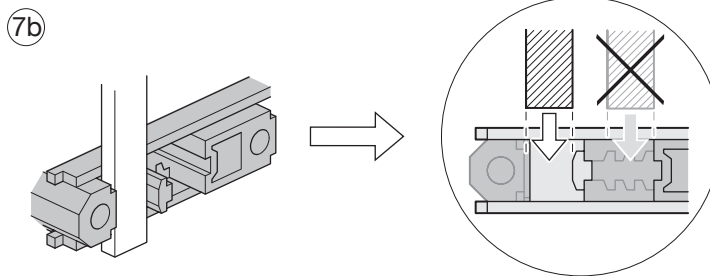
UC827





7a

①	4x KS72B (12 x 5 x 245 mm) 4x KS72C (12 x 5 x 1000 mm)	
②	4x UC832 (20 x 5 x 1000 mm)	
③		
④	4x UM30A3 (30 x 5 x 280 mm) 4x UM30A1 (30 x 5 x 430 mm) 4x UM30A2 (30 x 5 x 880 mm)	4x UM30A4 (30 x 10 x 430 mm) 4x UM30A5 (30 x 10 x 880 mm)



		160 A	250 A	400 A	630 A
Icc (kA)	Ipk (kA)	\leftarrow 12 x 5	\leftarrow 20 x 5	\leftarrow 32 x 5	\leftarrow 32 x 10
10	17	1000 mm	1000 mm	1000 mm	1000 mm
15	30	475 mm	1000 mm	1000 mm	1000 mm
20	40	/	950 mm	1000 mm	1000 mm
25	53	/	650 mm	850 mm	1000 mm
30	63	/	425 mm	550 mm	900 mm
35	74	/	/	375 mm	625 mm

UC827