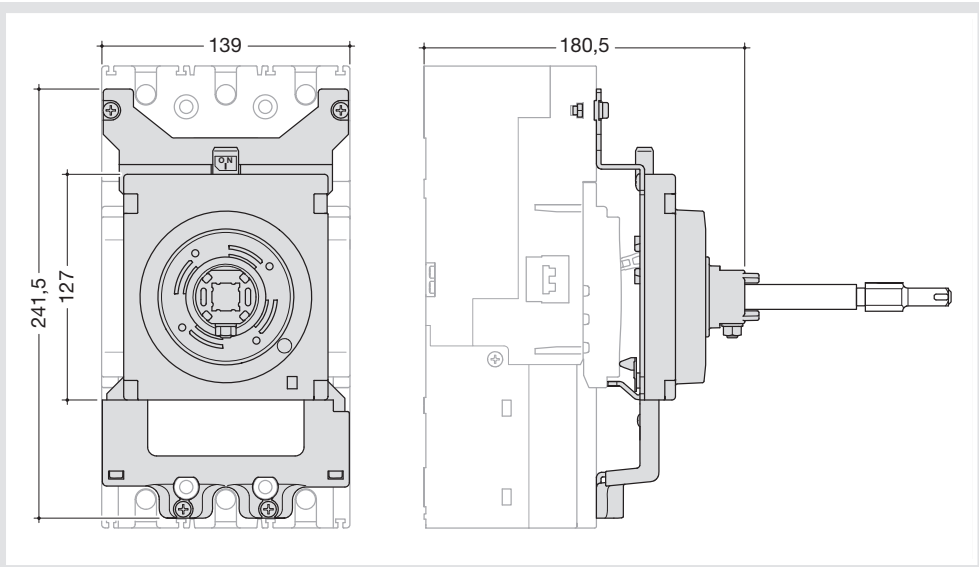
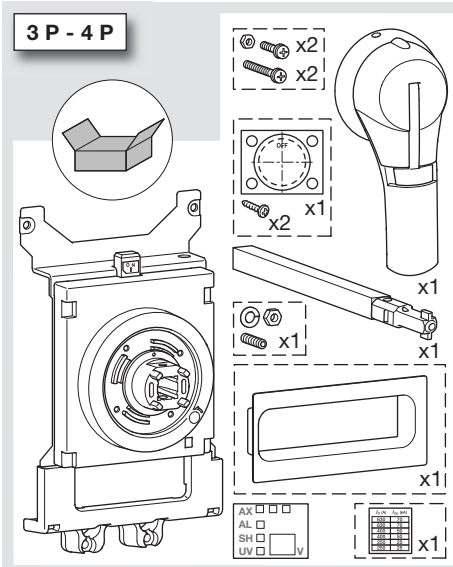


h400, h630

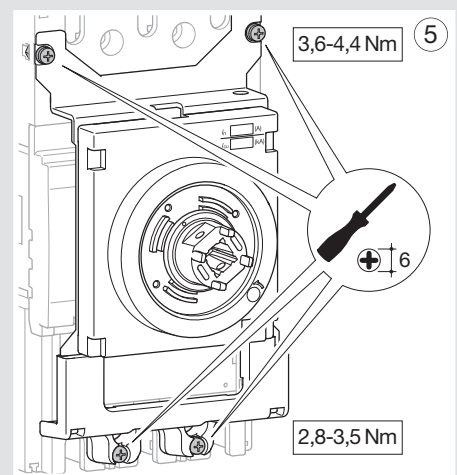
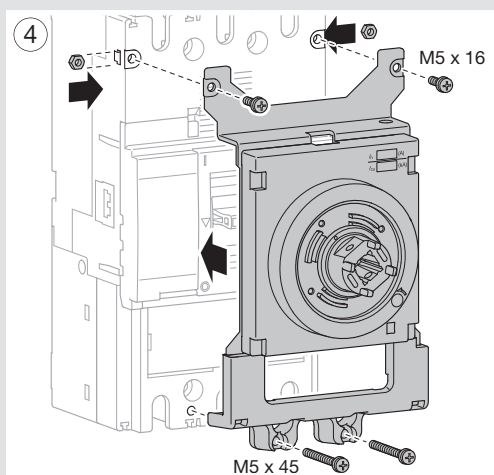
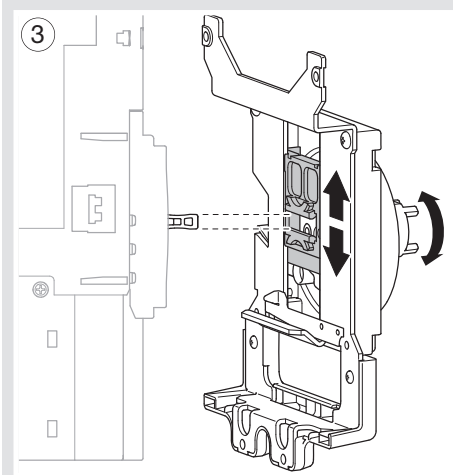
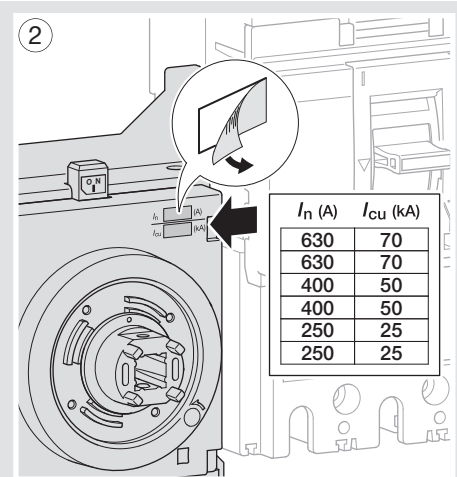
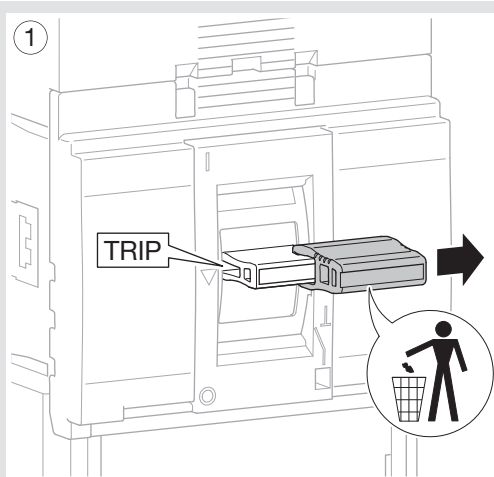


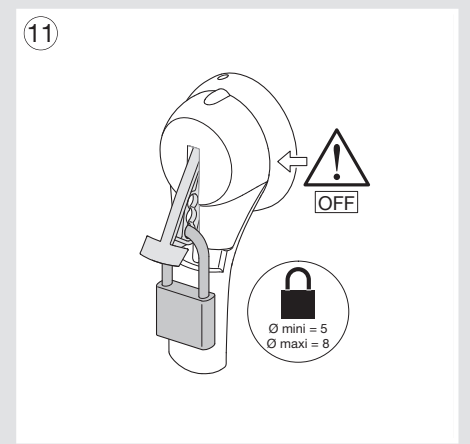
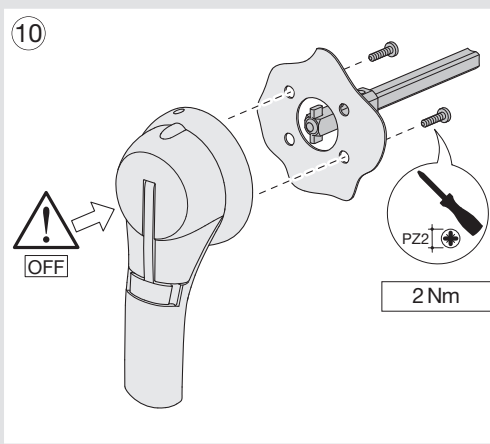
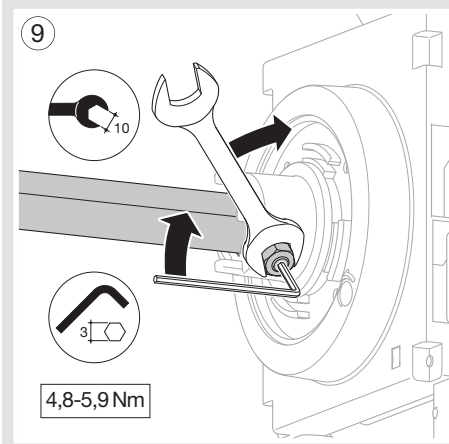
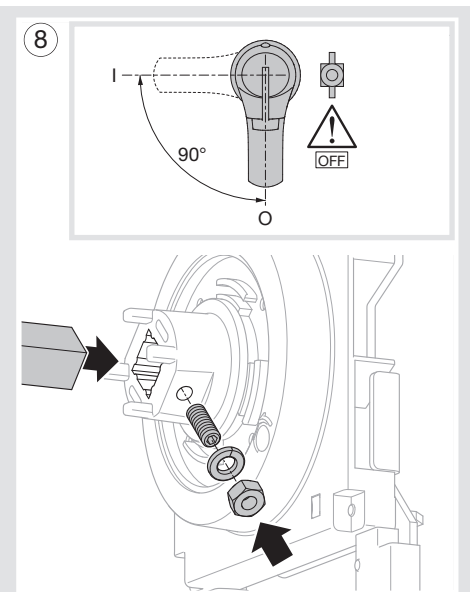
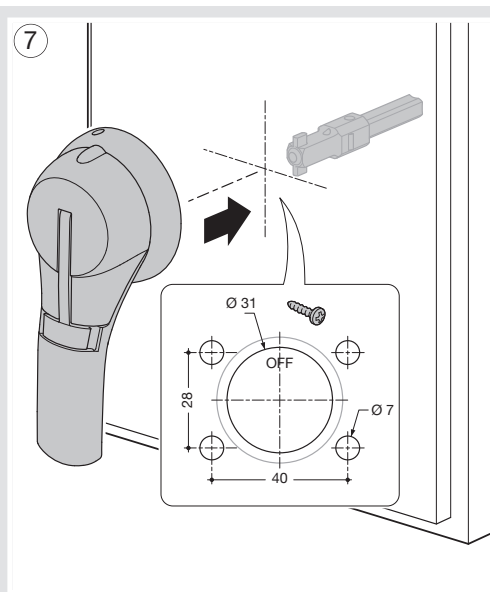
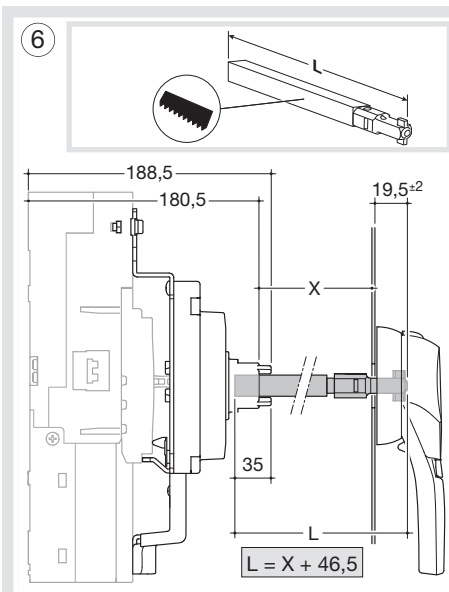
- (FR) Commande rotative débrochable HXD031H
- (GB) External rotary handle HXD031H
- (DE) Drehantrieb Türeinbau HXD031H
- (IT) Comandi rotativi rinviati HXD031H
- (ES) Mandos rotativos embrague HXD031H
- (NL) Afneembare draaibediening HXD031H
- (PT) Comando rotativo extraível HXD031H
- (NO) Vrihåndtak på døren HXD031H
- (GR) Περιστροφικό χειριστήριο με προεκτατικό άξονα HXD031H
- (PL) Napęd obrotowy HXD031H
- (RU) Выносная поворотная рукоятка HXD031H
- (CN) 加长旋转手柄 HXD031H

- Notice d'instructions
- User instructions
- Montageanleitung
- Istruzioni di montaggio
- Instrucciones de uso
- Gebruiksaanwijzing
- Instruções de instalação
- Bruksanvisning
- Οδηγίες χρήσεως
- Instrukcja obsługi
- Руководство по эксплуатации
- 用户手册



- Assemblage de la commande rotative sur le disjoncteur
- Fitting the rotary handle on MCCB
- Verbinden des Drehantriebs mit dem Leistungsschalter
- Installazione dei comandi rotativi sull'interruttore
- Ensamblaje del mandos rotativos sobre el interruptor automático
- Montage draaibediening aan vermogensautomaat/-schakelaar
- Montagem do comando rotativo no disjuntor
- Montering av vrihåndtak på effektbryter
- Συνένωση ρελέ διαφυγής - διακόπτη Ισχύος
- Montaż napędu obrotowego na wyłączniku
- Установка поворотной рукоятки на автоматический выключатель
- 安装旋转手柄于MCCB上





- Cadre de jonction
- RCD linking kit
- FI-Berührungsschutzabdeckung
- Mostrina di finitura
- Marco para mando rotativo
- Afdekraam aardlelement
- Aro de acabamento p/ bloco dif.
- Sett for jordfeilblokk
- Πλαίσιο για τις ρυθμίσεις
- Pokrywa łącząca do bloku RCD
- Рамка сопряжения УЗО с защитой от прикосновения
- 漏电模块连接套接

