

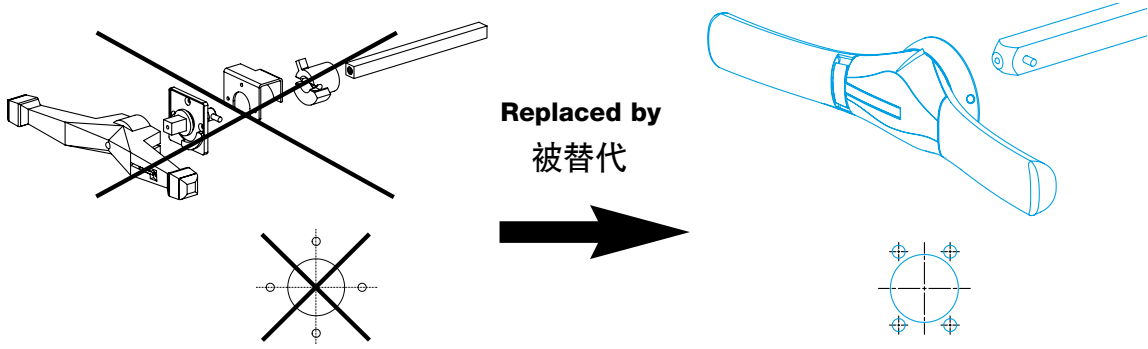
**HZA001, HZI006,
HZI006I**

(EN) External handle for switch
800 to 1600A

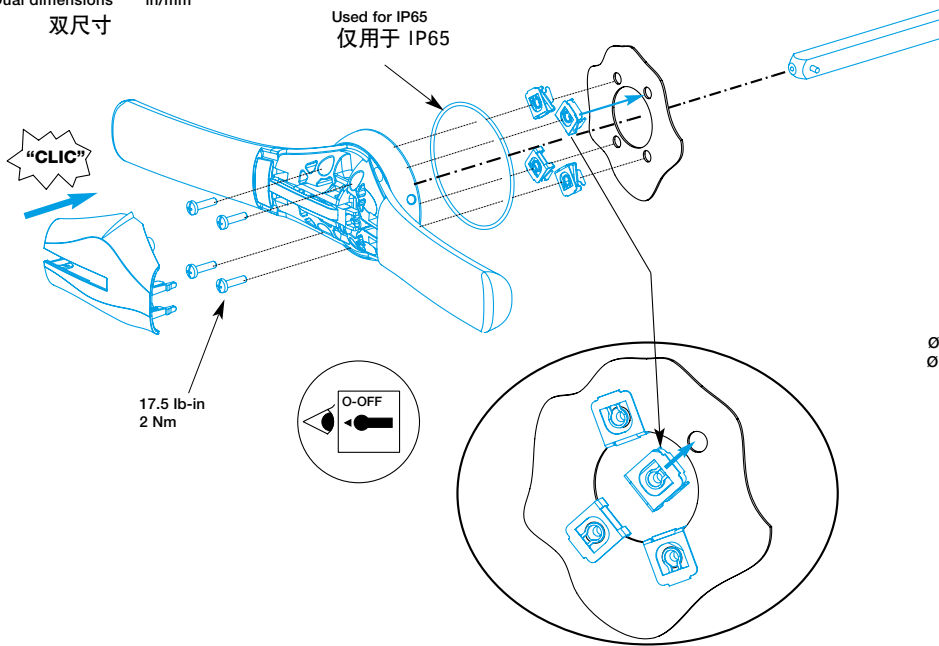
(ZH) 加长手柄
800 到 1600A

User instructions

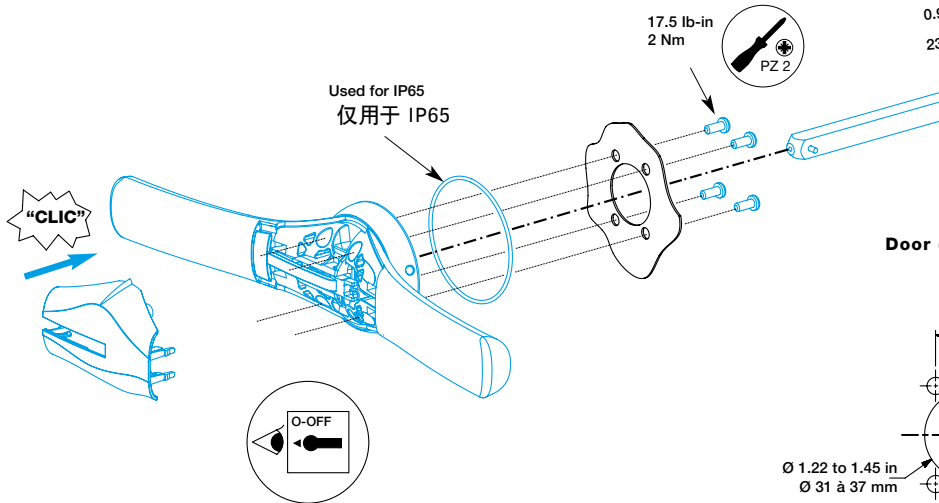
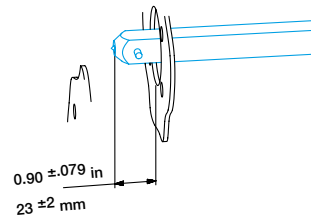
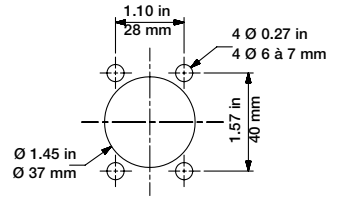
说明书



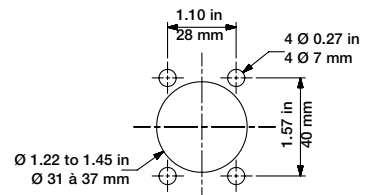
Dual dimensions
双尺寸 in/mm



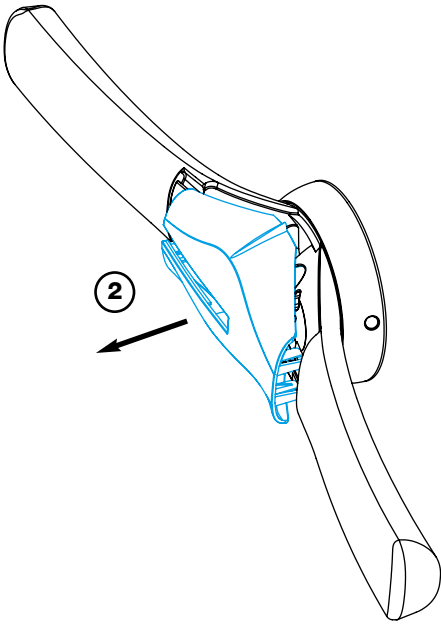
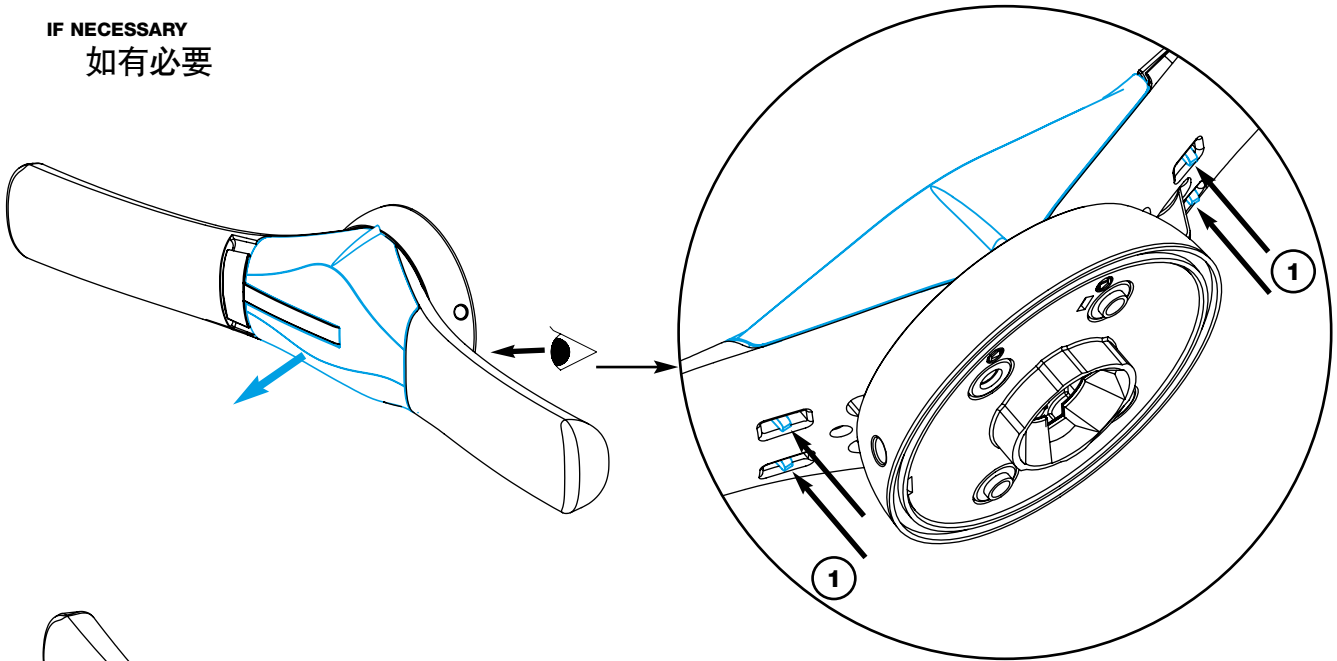
Door drilling
开孔尺寸



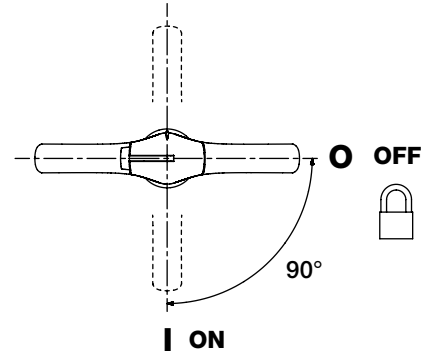
Door drilling
开孔尺寸



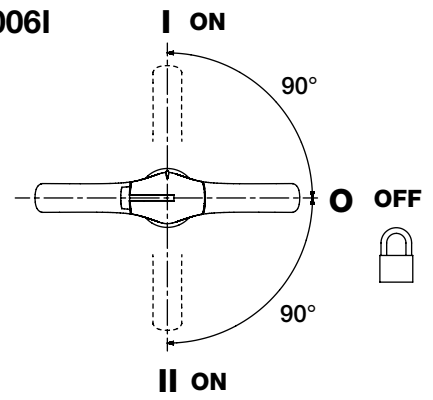
IF NECESSARY
如有必要



HZA001

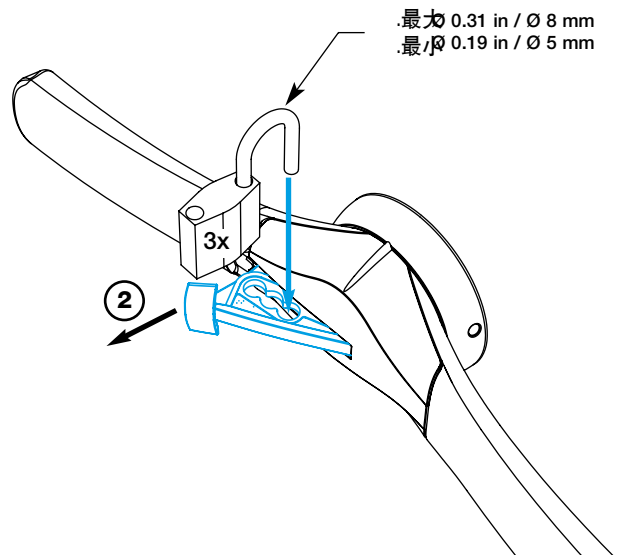
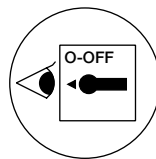
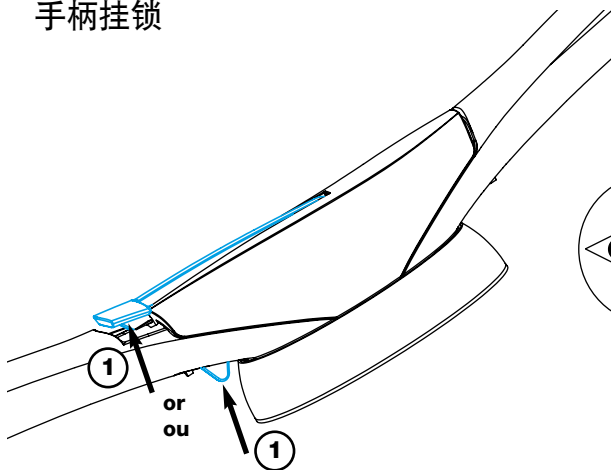


HZI006, HZI006I



Padlocking the handle

手柄挂锁



最大 0.31 in / Ø 8 mm
最小 0.19 in / Ø 5 mm

Defeating the interlock in ON position

除开关在“ON”位置的门联锁



DANGER

HAZARDOUS VOLTAGE

- Disconnect all power before servicing.
- Be sure enclosure is closed securely before operating device.
- Testing of live equipment should only be performed by qualified service personnel in accordance with local regulations.

Failure to follow these instructions will result in death or serious injury.



险电压

危险

- 操作之前断开所有电源
- 操作装置之前,要确保控制箱已安全关闭。
- 检测带电装置一定要由依据本地法规取得资格的专业人士进行操作。不遵守以上预警指示将导致严重伤害 或死亡

