

6LE001624Ad

h3+
P160

3P-4P

x1

x2

≤ 125A x6 (3P)
x8 (4P)

160A x6 (3P)
x8 (4P)

50 x2 (3P)
x3 (4P)

MCCB 3P ENERGY

HTC160H

Tools:

- Wire cutters
- Screwdriver (2, 3)
- Screwdriver (PH 2)
- Hex key (3, 5, 6, 8)

Dimensions:

	A (mm)
3P	90
4P	120

	B (mm)
TM-LSI	72,5
Energy	74,5

Installation:

M4

30

111

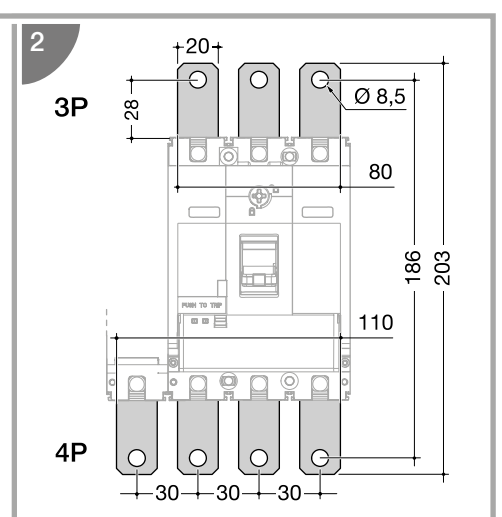
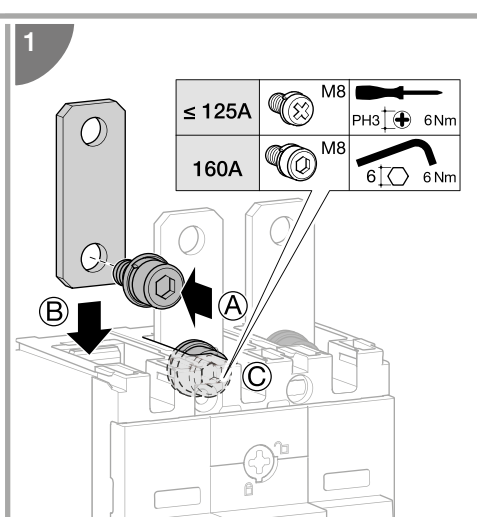
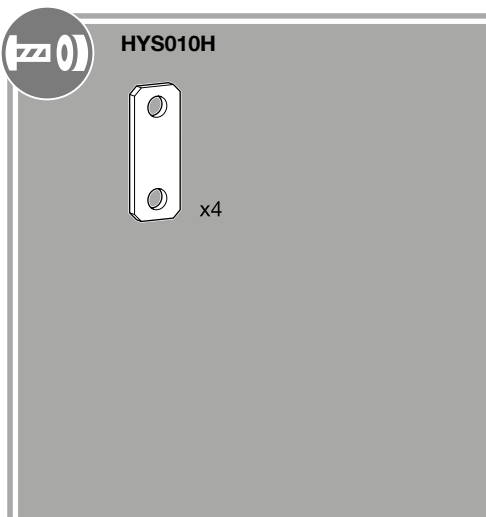
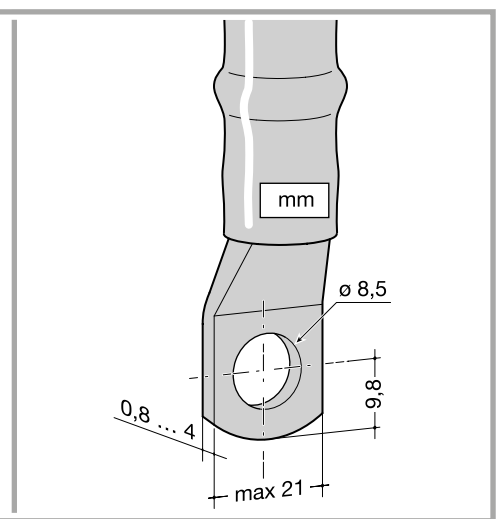
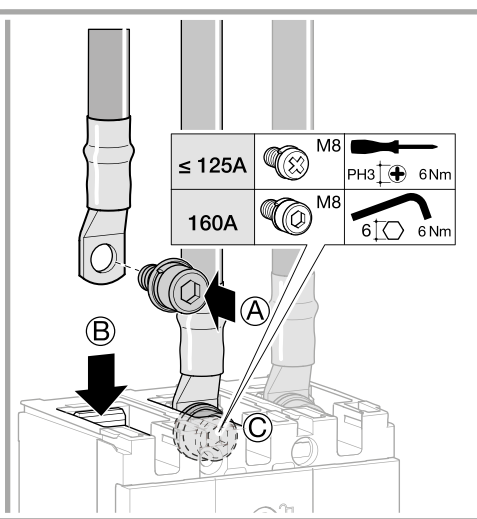
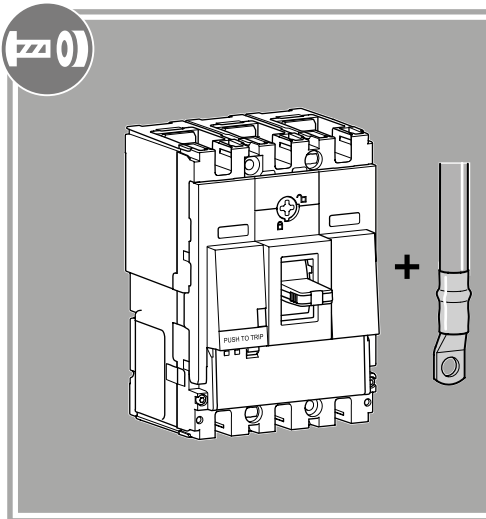
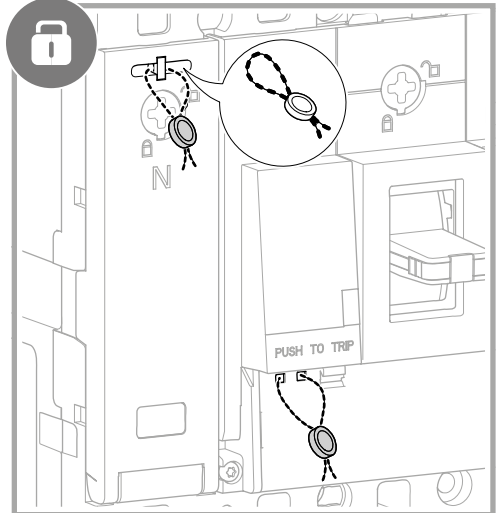
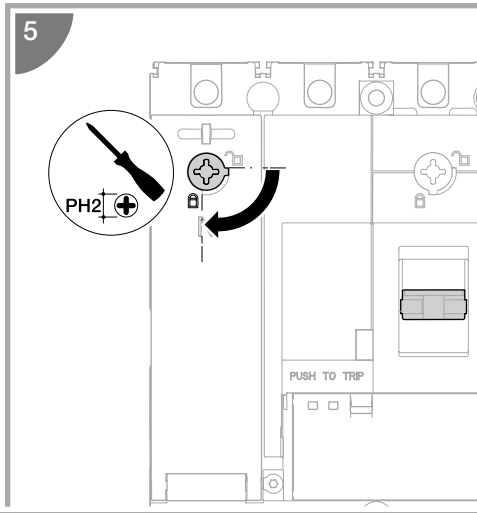
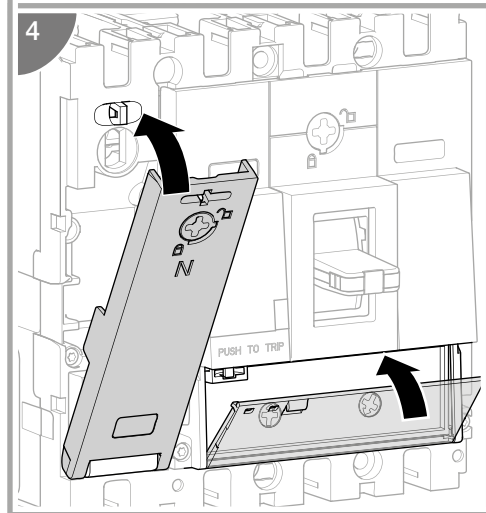
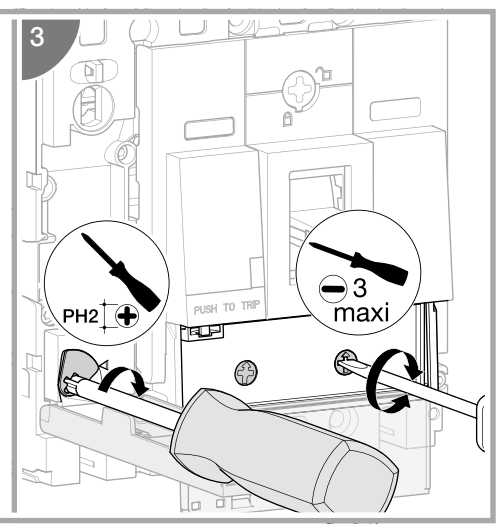
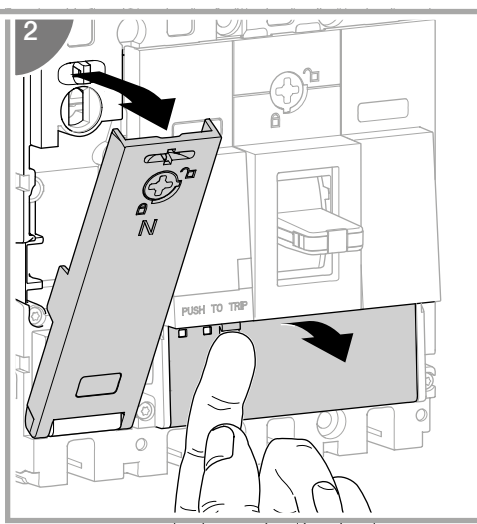
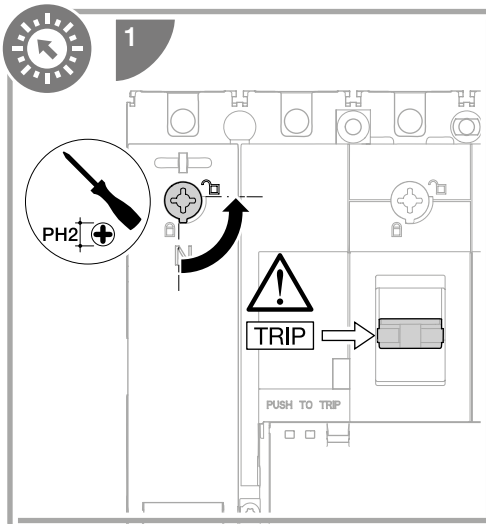
PH2 \oplus

1 Nm

Operation Cycle:

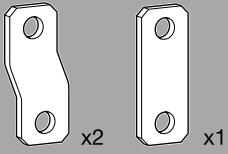
TRIP → OFF → ON → TRIP → OFF

Click!

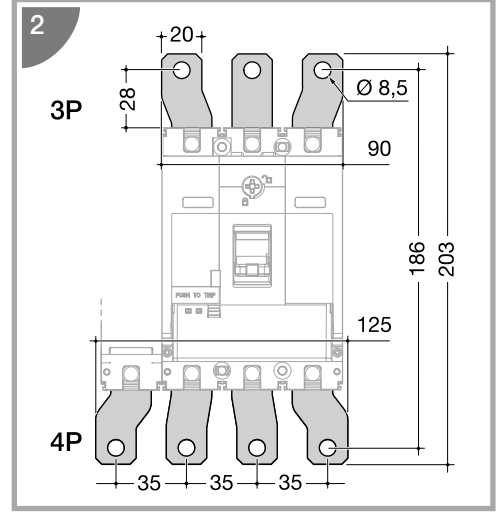
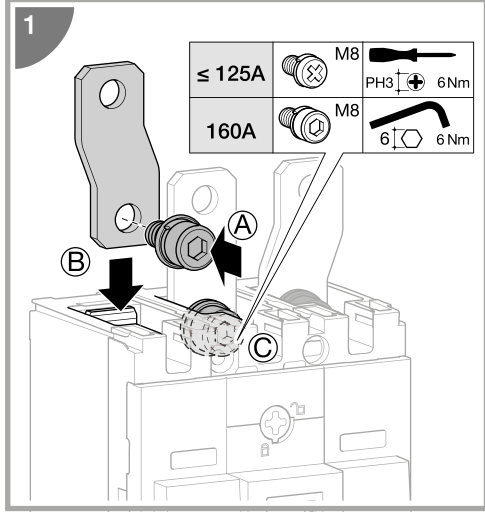
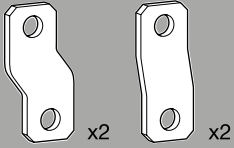




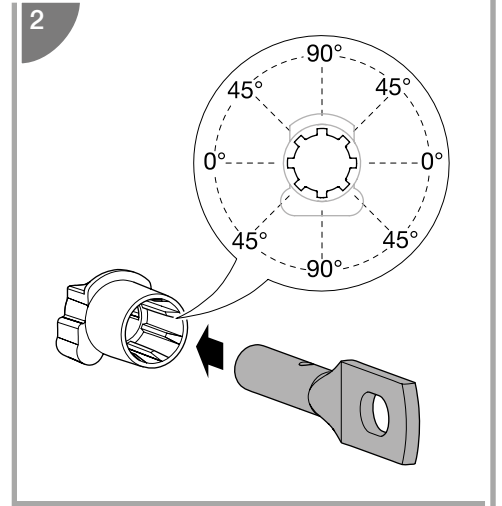
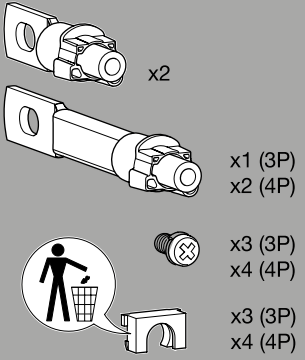
HYS011H (3P)



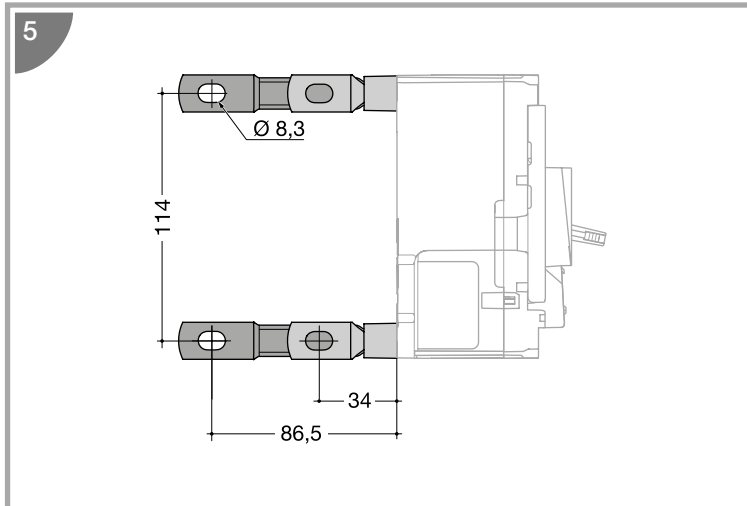
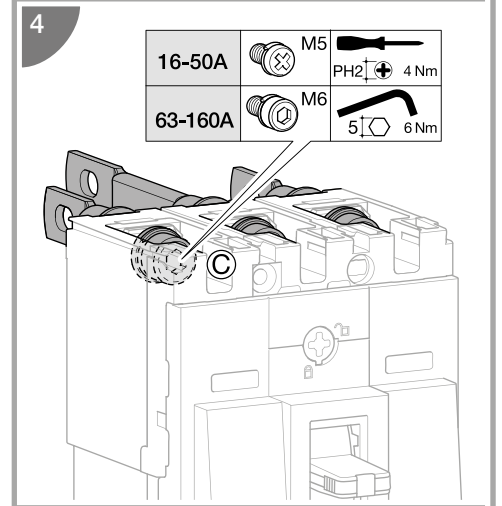
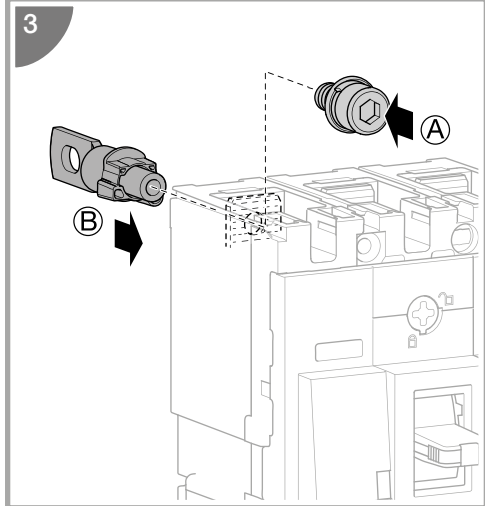
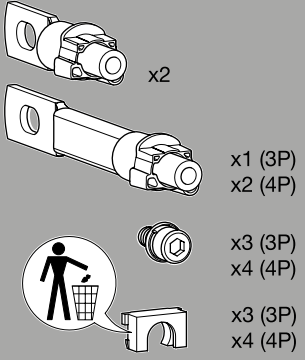
HYS012H (4P)



HYS031H (3P 16-50A) HYS032H (4P 16-50A)

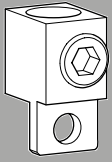


HYS131H (3P 63-160A) HYS132H (4P 63-160A)





HYS105H (3P)
HYS106H (4P)



x3 (3P)
x4 (4P)

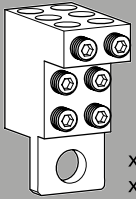
+



Cu
Al

	min.	max.
	(mm ²)	
	35	95
	35	120

HYS155H (3P)
HYS156H (4P)



x3 (3P)
x4 (4P)

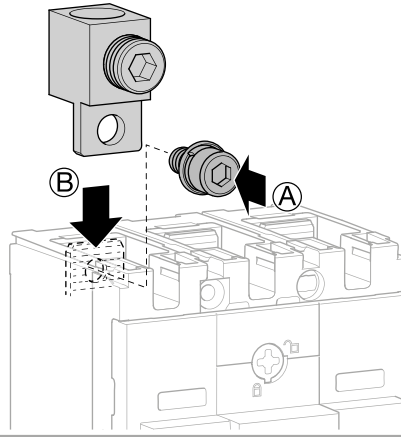
+



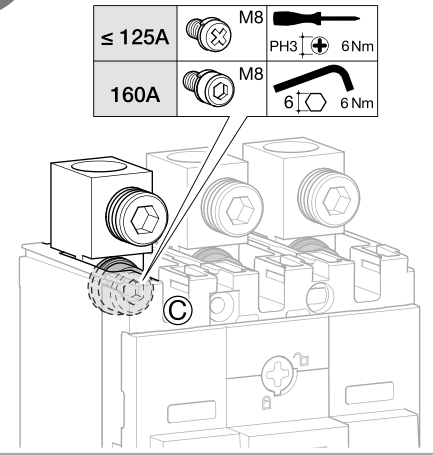
Cu
Al

	min.	max.
	(mm ²)	
	4	16
	4	25

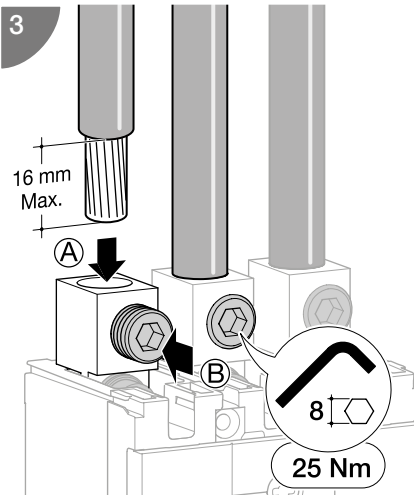
1



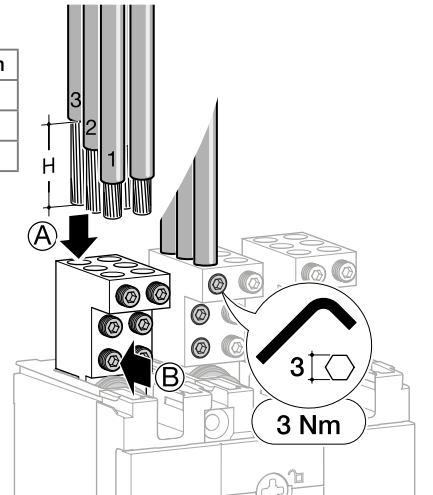
2

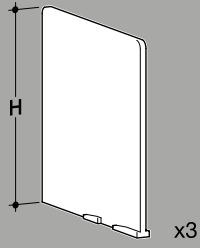


3

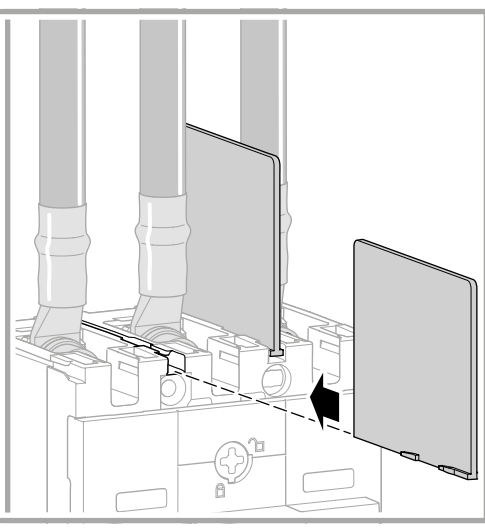


H	mm
3	30
2	19
1	10

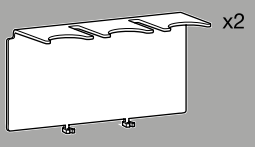




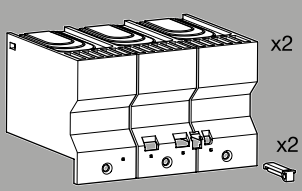
		H (mm)	
		50	100
3P/4P		HYS019H	HYT019H



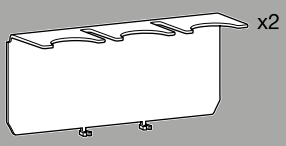
HYS050H (3P)
HYS051H (4P)



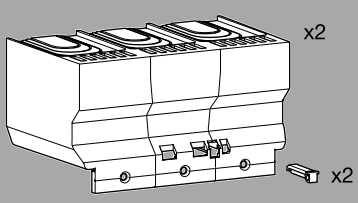
HYS021H (3P)
HYS022H (4P)



HYS052H (3P)
HYS053H (4P)



HYS023H (3P)
HYS024H (4P)



HYS025H (3P)
HYS026H (4P)

