

Operation and configuration instructions



coviva Smartbox
TKP100A

WLAN stick
TKH180

Power supply
(replacement requirement)
TKC110

Contents

Design and layout of the device	3
Scope of delivery	3
Optional accessories	3
Function	4
System information	4
Correct use	5
Product characteristics	5
1 Preparations	6
Role concept.....	6
Configure myHager account.....	6
Install coviva mobile-App.....	7
Call up coviva web app.....	7
2 Project implementation	8
Log in to the app as administrator (<i>Figure 6</i>).....	8
Add user (<i>Figure 7</i>).....	9
Edit/remove user (<i>Figure 8</i>).....	10
3 Configuration adaption	11
Update device software (<i>Figure 9</i>).....	11
Add device to the project	11
Add Connected device (<i>Figure 10</i>)	12
Combine devices into groups (<i>Figure 11</i>).....	12
Edit/remove group (<i>Figure 12</i>).....	13
Create covigram	15
Example 1: Temperature warning (<i>Figure 13</i>):.....	16
Example 2: Outdoor lighting (<i>Figure 15</i>):	18
Example 3: All OFF (<i>Figure 16</i>):.....	19
Edit/remove covigram (<i>Figure 17</i>)	21
Add device to the favourites list (<i>Figure 18</i>)	23
Remove device from the favourites list (<i>Figure 19</i>)	23
Change settings (<i>Figure 20</i>).....	25
4 Operation	27
Operating concept	27
Carry out a networkreset	30
RGB LED display.....	31
Remote maintenance	31
Activate/deactivate remote access	32
Appendix	33
User profiles and rights	33
Further connected devices	34

Design and layout of the device

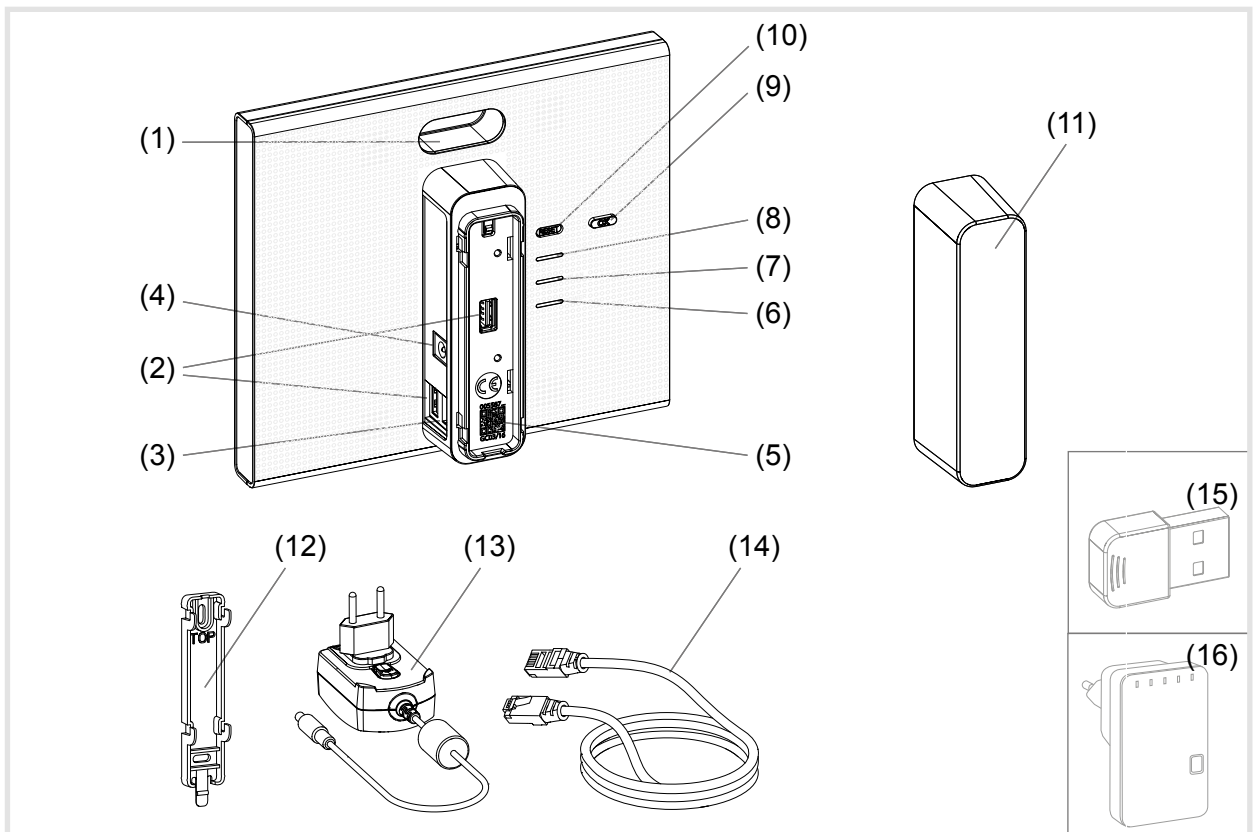


Figure 1: Rear/side view and accessories

- (1) RGB LED display
- (2) USB connection sockets
- (3) RJ45 connection socket (LAN)
- (4) Connection power supply
- (5) QR code with coviva ID
- (6) Operation LED **POWER**
- (7) **WLAN** Display - only active with optional WLAN stick (see *Accessories*)
- (8) Status display **ONLINE**
- (9) Acknowledge button **OK**
- (10) Button **RESET**

Scope of delivery

- coviva Smartbox
- Protective cover (11)
- Adapter plate for wall mounting (12)
- Power supply 230 V~/5 V= (13)
- RJ45 connection cable, Cat 5e (14)

Optional accessories

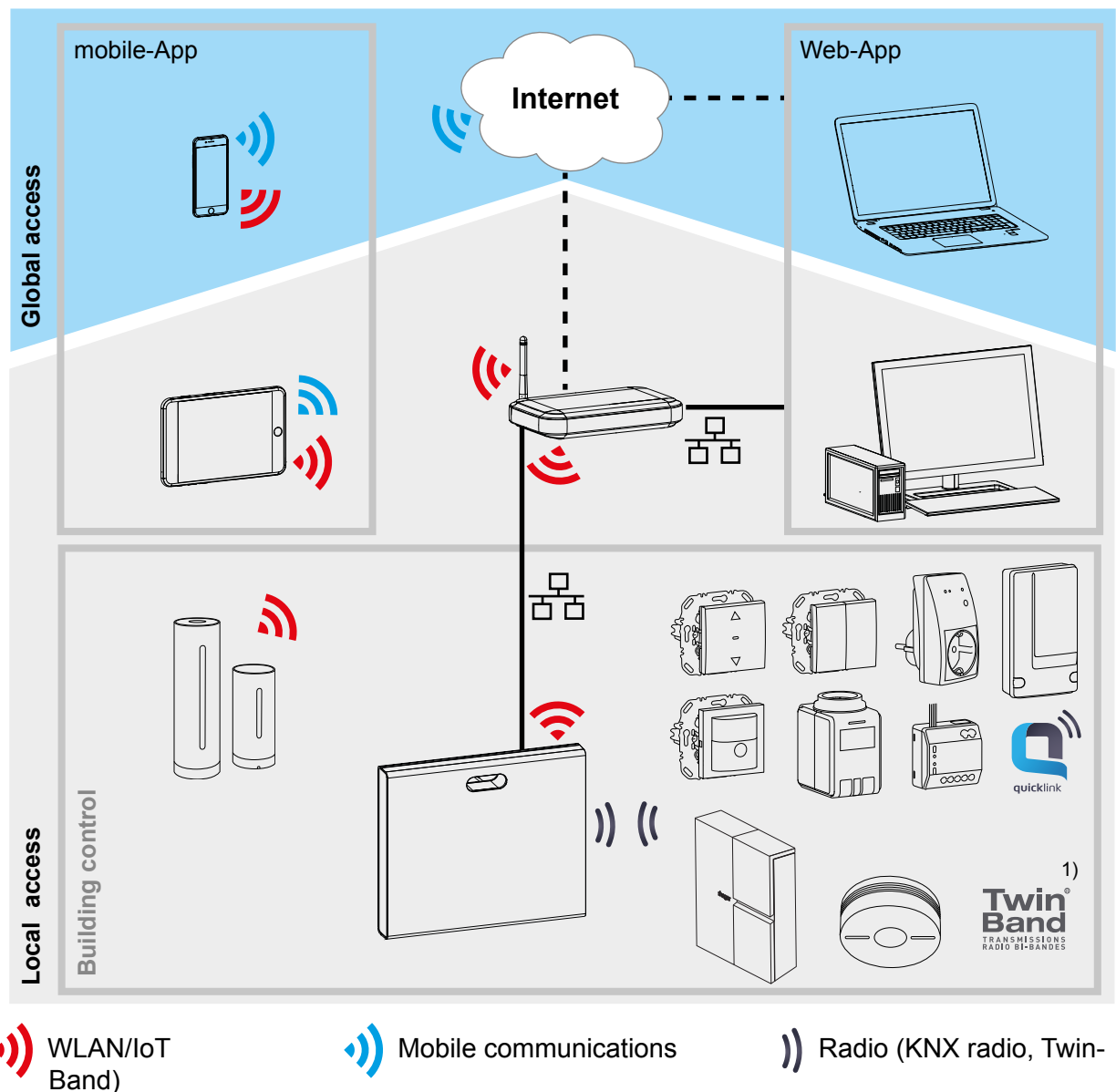
- WLAN stick (15)
- WLAN adapter (16)

Function

System information

The coviva Smartbox forms the interface of wirelessly communicating devices such as KNX radio actuators or Twin Band devices and WLAN as well as IoT applications to the existing IP infrastructure via a network router. Electrical loads and functions of the building control can be interlinked, visualised, monitored and operated on mobile end devices or stationary computers by means of a mobile app or browser-based web app. In this way, location-independent access to the building control - via the home network and via the Internet - can be ensured and at any time.

This solution is especially designed for implementing smart Home functions and comfort in modernised or retrofitted systems.



¹⁾ Not available in every country.

Figure 2: Application environment

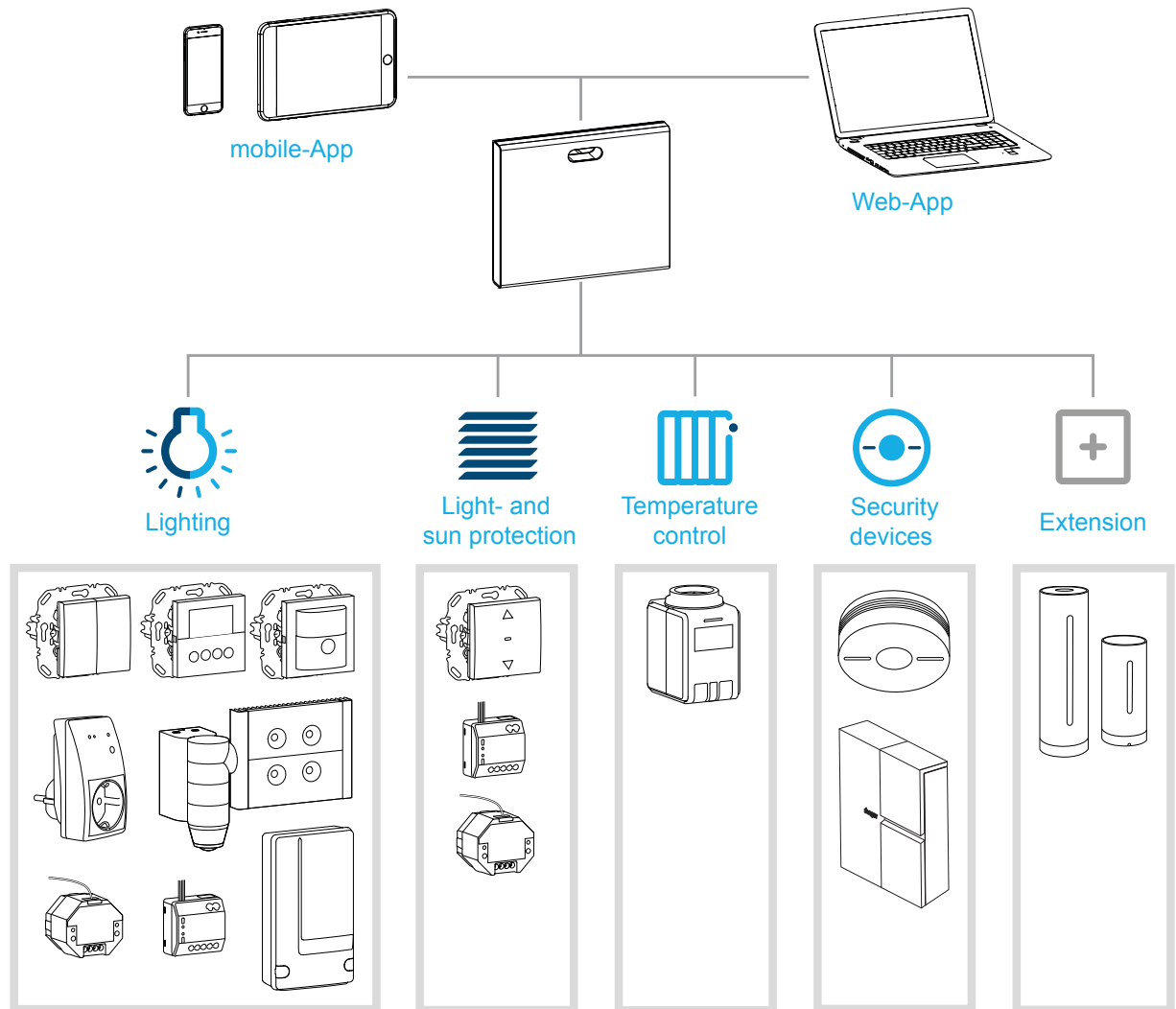


Figure 3: System overview

Correct use

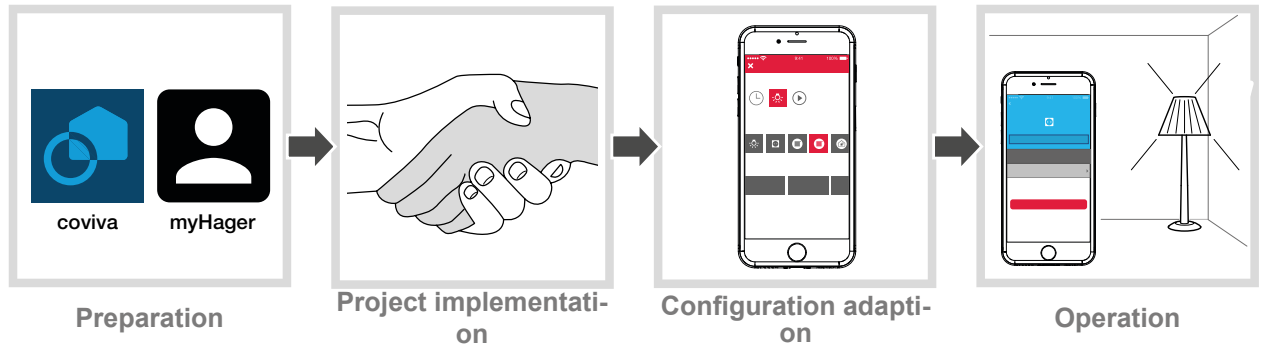
- Interface for wireless communication with receivers/actuators via the IP network
- Operation and visualisation on (mobile) end devices via coviva app
- Connection to the network router by cable or via optional WLAN stick (see *Accessories*)
- The device is only suitable for indoor areas.

Product characteristics

- secure system administration via user profiles with different rights
- control of KNX radio systems and WLAN applications via mobile app for mobile end devices or web app for notebook, PC, ...
- simple creation of scenes (covigrams) via the app
- self-configurable messages after events
- remote access and remote maintenance via integrated Dyn DNS service
- Logic operations
- Updates with notifications available online

The administration process

Prepare the smartbox in three steps for operation of building control:



1 Preparations

Role concept

User profiles with different access rights must be managed in the coviva app.

User profile	Access rights	myHager account	Example
Electrician	during the project - unlimited rights after the handover, if required: - Remote access after release by the administrator	Required	Installation engineer, planner
Administrator	for one user per smartbox: - Configuration rights for adding/removing devices - Administration of all users	Required	Builder
User name	normal rights for adapting and operating the system	not required	Family members, fellow occupants

Table 1: User profiles

i Detailed information on the access rights per user profile can be found in an overview table in the appendix.

Configure myHager account

In order to manage a project with the smartbox, successful registration as an administrator according to the role concept (*Table 1*) under **hager.com** is necessary.

- Go to the **hager.com** website and click on **register now**.

Or:

- Scan the QR code with an appropriate app, switch to the coviva homepage and select **Registration**.
- Fill out the personal data, agree to the use of personal data and configure account with **Send**.

An e-mail with a confirmation link for activating the **my Hager** account will be sent to you ().

- Click the **Complete registration** button in the e-mail to activate the account.



hager.com/coviva

i Later, you can also view completed coviva projects via the account (*Figure 5*).

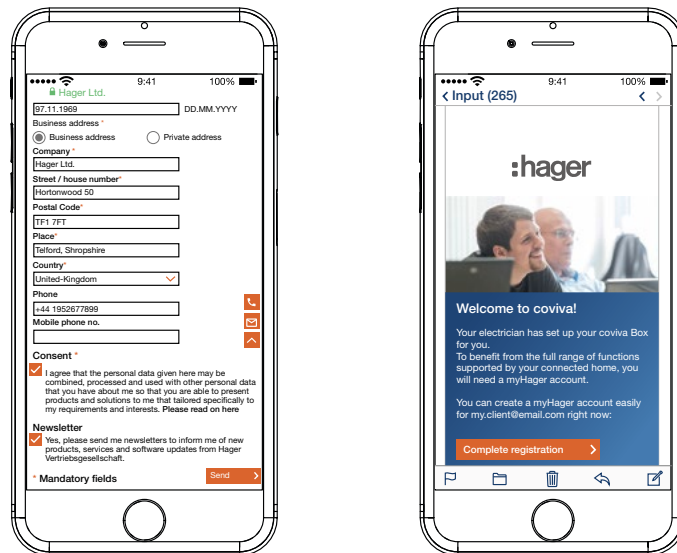


Figure 4: Configure myHager account

Install coviva mobile-App

- Log in to the corresponding app store on the end device and select the coviva app.
- Download and install app.

i The app requires at least version IOS 7.1 or Android 4.1 or higher on the mobile end device.

Call up coviva web app

As an alternative to the mobile app, it is also possible to access the smartbox after project take over via a web portal from a PC, notebook or mobile end device with a Windows operating system. An HTML5 compatible browser such as Chrome, Safari, Internet Explorer or Firefox is required. The user interface is similar to the coviva mobile app and provides the same functions in a suitable format for larger screens.

- Enter the URL customised with the ID: <https://12-stellige coviva ID.koalabox.net/webapp> in the browser.
- The web app opens.

The web app can also be called up via the myHager account.

- Log into the **my Hager** account and select.
- Open the web app via .

i The end device and smartbox must be online each time the web app is subsequently used.

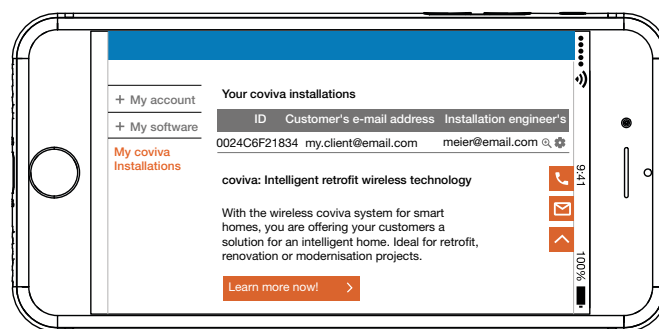


Figure 5: myHager project view

2 Project implementation

Log in to the app as administrator (Figure 6)

Following project handover, the administrator automatically receives an e-mail in the coviva app from his or her electrician indicating that **Connected Home** can now be used and containing the access data (e-mail address). The administrator can now log in to the coviva app.

The (mobile) end device is online.

- Open the coviva app

The coviva ID for connecting to the smartbox is displayed. If this is not the case, use and the (mobile) end device's camera to scan in the coviva ID shown on the rear side under the cover or enter it via the keypad.

- Select **Login** to change over to the login page.

The administrator must have a **myHager** account. If an account has not yet been created, following handover, the user will be forwarded to the registration page the first time he or she attempts to log (see setting up *myConfigure myHager account account*).

Enter **User name** and the **Password** for **myHager** account and log in with **Add user**.

If the **General Term of Use (GToU)** for the coviva app have not yet been accepted in the **my-Hager** account, the corresponding web page must be accessed at this point.

- To do this, press the **myHager GTC** buton.
- Accept the GToU via the checkbox and complete the operation via **Save**.
- Afterwards, log in again to the app.

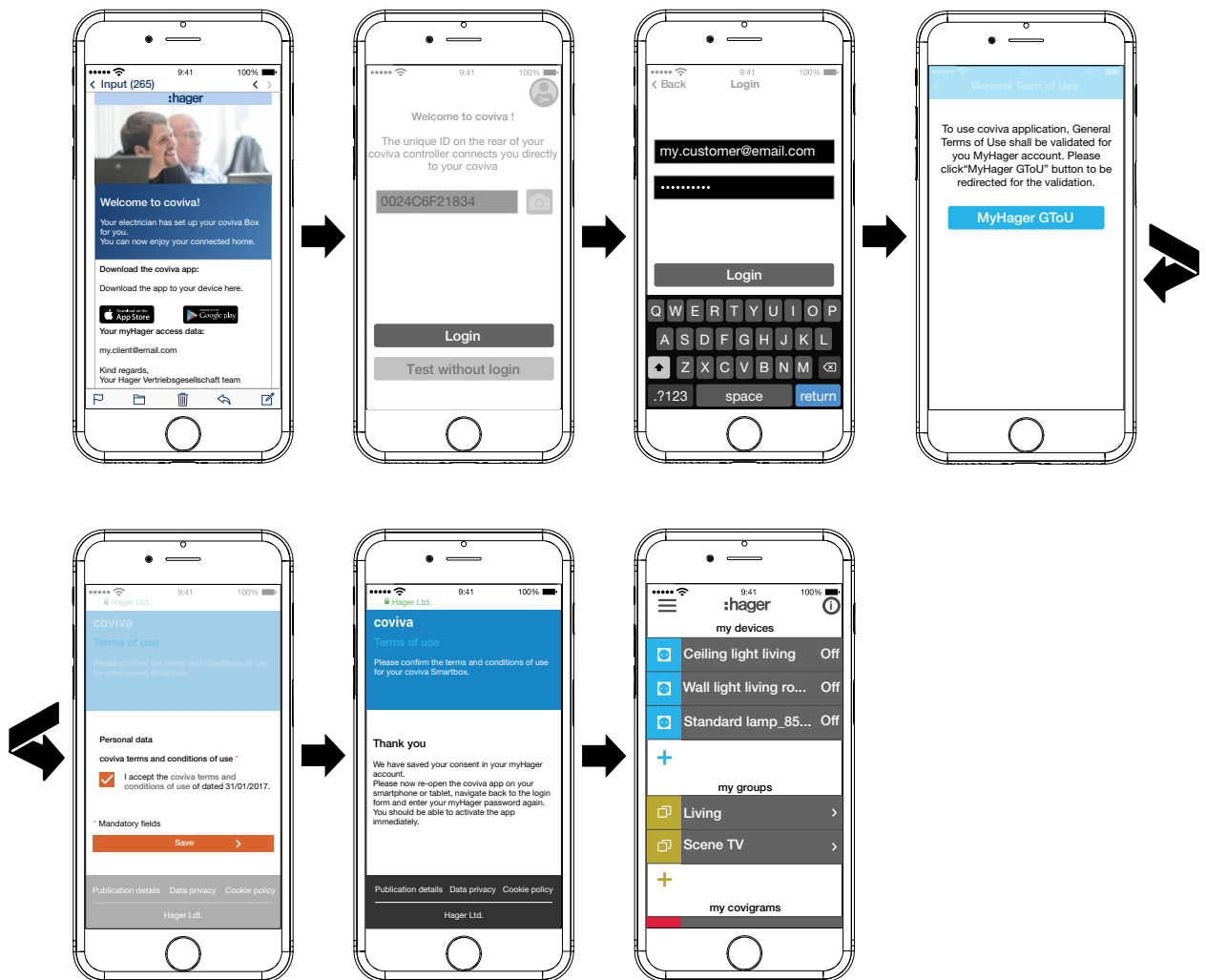


Figure 6: E-mail and administrator login

Add user (Figure 7)

The administrator can set up a user profile with corresponding access rights (see Table 6) for all tenants and visitors for operating the building control via the coviva app.

i As local operation also functions offline, we recommend that as the administrator you create an additional user profile for yourself with standard access rights (user). As a user, you can log into the app and remain logged in without having to validate the access data online.

- In the main menu press and call up the settings with .

- Select **All users**.

The **Users** view is called up.

- Add a user with the **+** button in the top right corner.

- Assign the level of rights to the user with **Classic (User)** via the checkbox. Confirm with **Save** or discard via **X**.

- Then select in succession:

- First name and last name
- E-mail address and telephone number
- User name and password

- Each entry must be confirmed with **Save** or discarded via **Back**.

The new profile is displayed in the overview of all users.

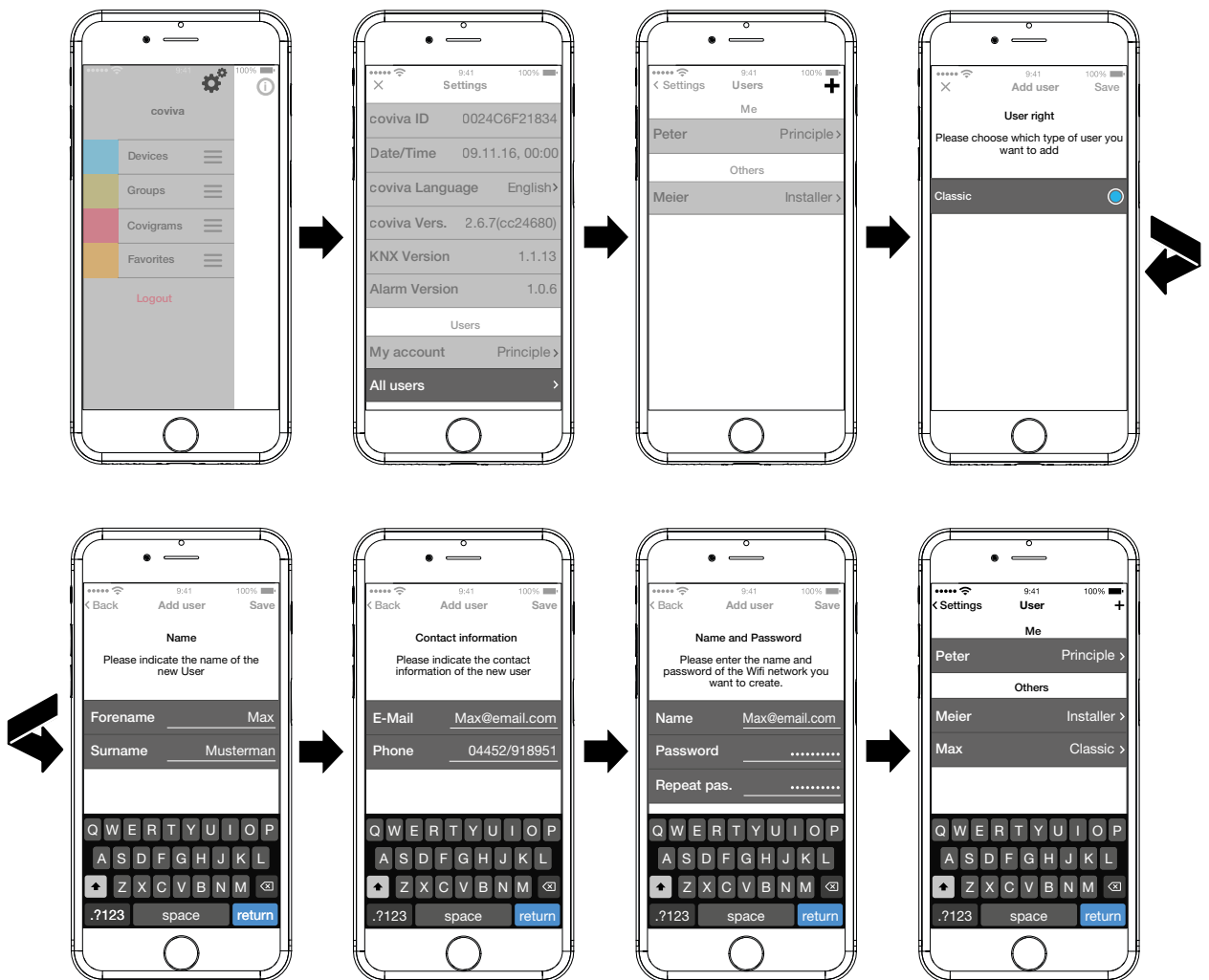


Figure 7: Create user

Edit/remove user (Figure 8)

i The user data from the electrician and administrator are always updated with those stored in the myHager account. These profiles cannot be removed or their user data changed via the app.

The **Settings** page has been called up.

- Select all users.

The user view is called up.

- The saved data is displayed via **>** next to a user.
- Then carry out the following actions as required:
 - Modify entries in the user data and confirm via **Save** or discard via **<**
 - A new password can be assigned with **Change password** , which must be confirmed with **Save** or discarded via **<**
 - All rights in the app are withdrawn from this user via the **Delete User** button.

i Alternatively a user reset can be performed on the smartbox in order to restore the project to its status prior to handover.

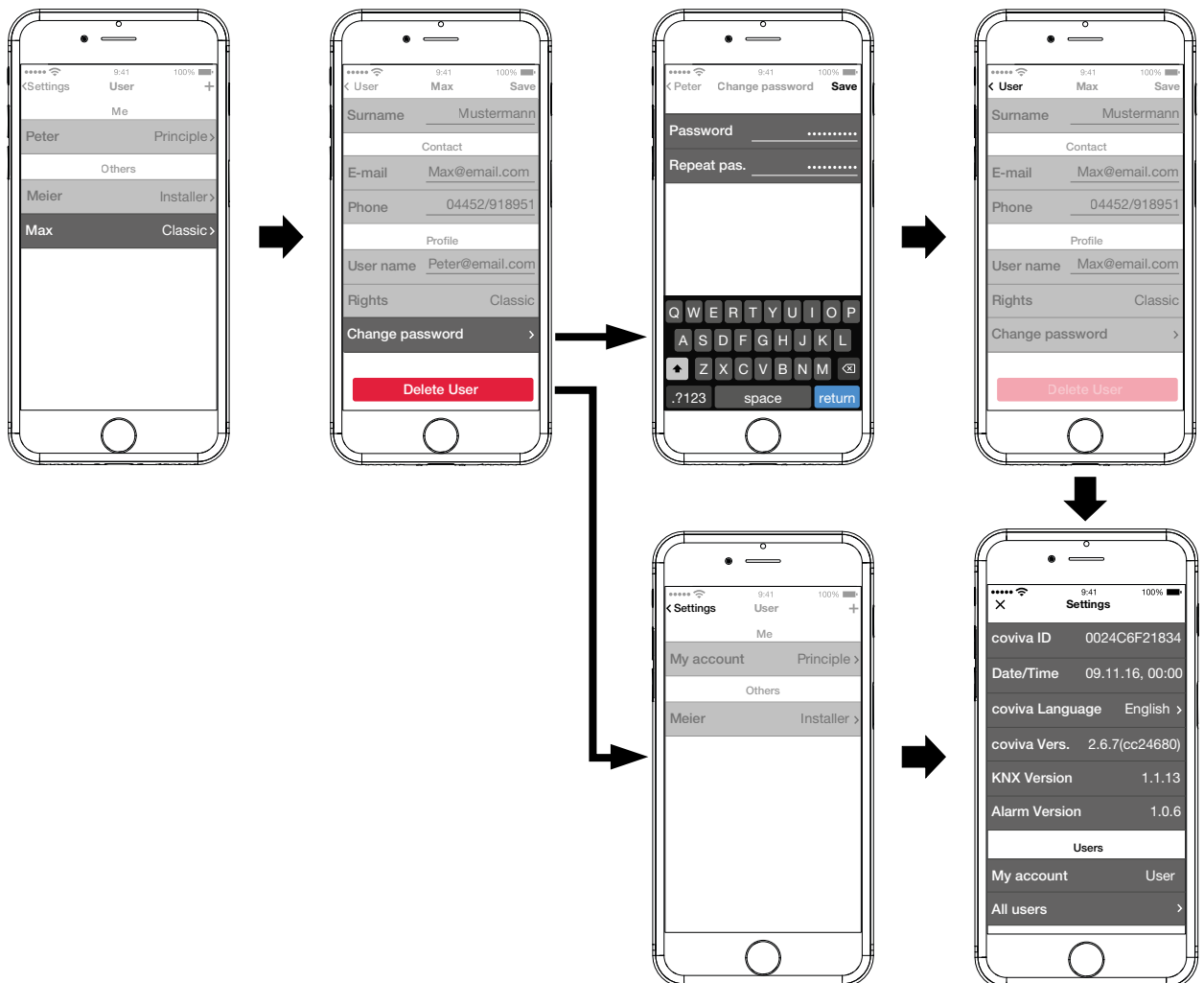


Figure 8: Edit/remove user

3 Configuration adaption

The following descriptions are based on the mobile app in the IOS system. The Android app as well as the descriptions in the Web app may vary slightly from this, but the functions, buttons and messages are identical.

Update device software (Figure 9)

If a software update is available for the smartbox, this is displayed via a message.

i We recommend carrying out the update immediately in order to prevent any malfunctions or incompatibilities.

- Start the update with **Install** .

The RGB display (1) of the smartbox flashes during the update. It goes out after successful completion of the update.

i The operation may take a few minutes. If the connection is disconnected during the update, restore the connection with **Retry**.

If the update is to be carried out at a later time,

- first decline the update via **Later** .

i Each time the app is subsequently opened, the update will be offered again.

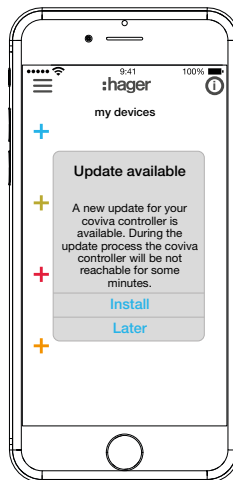


Figure 9: Software Update for the Smartbox

Add device to the project

Each device must be integrated individually.

- Press the blue **+** button.


The context menu for selecting the device category for the product to be integrated opens.

i The list of compatible products is available under **hager.com/coviva**.

As an example, the integration of the weather station (internal module) from Netatmo is described following. All compatible devices from other manufacturers can also be added to the coviva Smartbox as appropriate.

Add Connected device (Figure 10)

The weather station (indoor module) has been commissioned and has been registered in the WLAN network. A Netatmo account has been created.

- Select Netatmo in the context menu.
The view for entering the access data of the Netatmo account opens.
- Enter **E-mail address** and **password** for the Netatmo account of the customer and finish via **Let's go** .
The connection setup of the app via the smartbox to the Netatmo account is displayed in the app. If the connection is successful,  **Netatmo** is displayed.
- Activate the line with the description and change the name for the weather station if required.
- Finish the operation with **Save** or switch to the main menu via **Back**.
The added device is displayed under **my devices** .
- Carry out the operation with each additional, compatible device until all Netatmo devices have been added and uniquely named. As a result, the devices stored in the Netatmo account are displayed for selection, instead of another prompt for the access data.

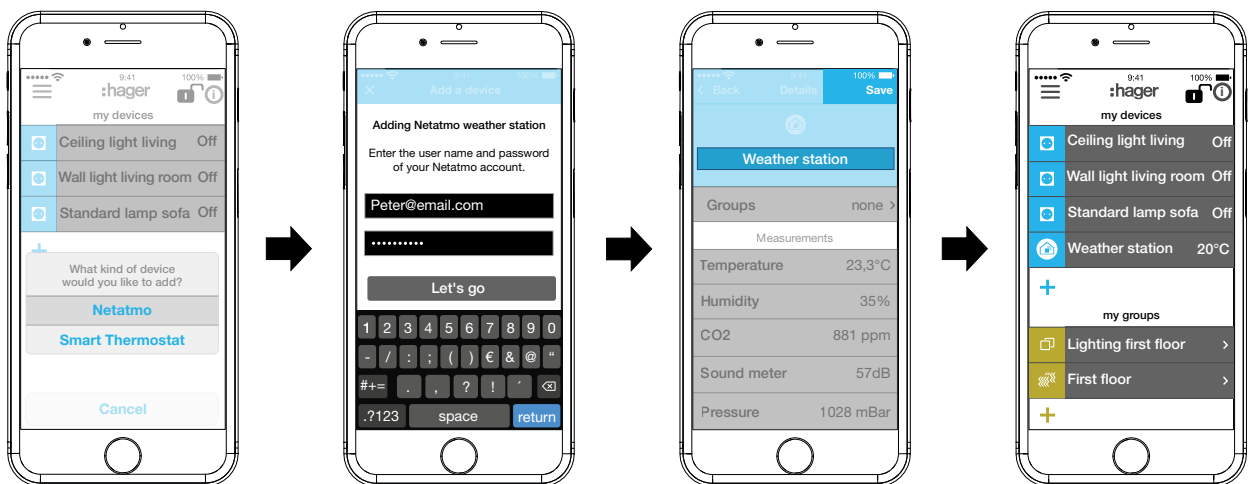



Figure 10: Add Netatmo devices

Combine devices into groups (Figure 11)

Devices can be combined into groups for easy navigation. In this way, all devices can be grouped, for example, room by room or per floor.

- To do this, press the green **+** button.
A context menu for selecting whether a group or zone should be added if thermostats are installed, is displayed.
- Select **Add group**.
A list with all devices is displayed under a new **Group**. The title line under  is activated.
- Give the group a name via the keypad.
- The desired devices are added by activating the relevant checkbox of this group.
- Assign the devices to this group with **Save** or discard via **X**.
The group is displayed in the main menu.

Devices can be added to a group at any time.

- To do this, press **>** on the group.
The combined devices in the group are displayed.
- Press the blue **+** button.
All devices not yet added to this group are displayed.

- Select the devices to be added via the checkbox.
- Assign the devices to the group with **Save** or discard via **X**.
The added devices are displayed in the device list of the group.
- Go back to the main menu via **Back**.

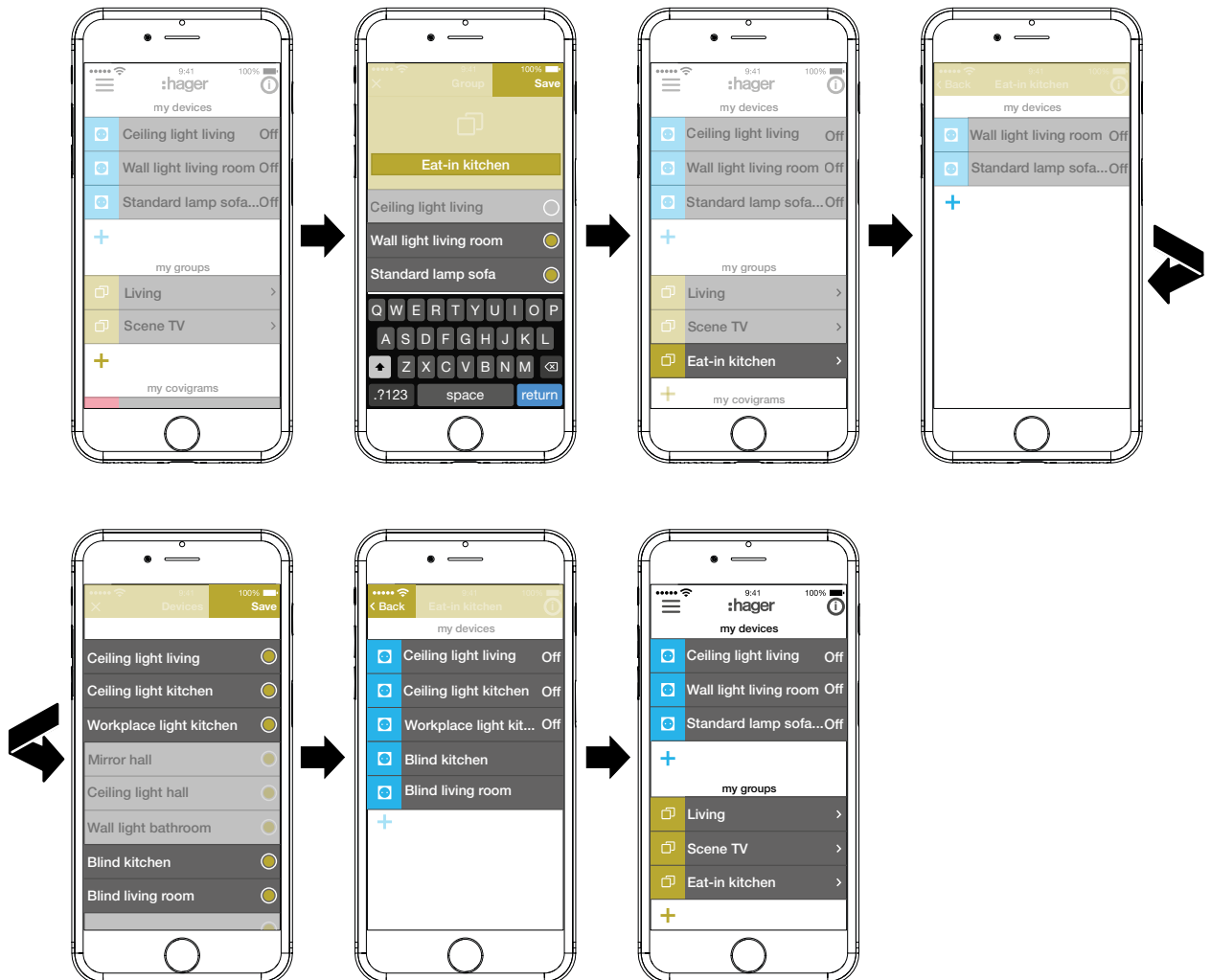


Figure 11: Create group, add group

- i** The combining of devices for heating control such as thermostats in a zone takes place in the same way as with a group and is initiated by selecting **Add hot water zone**. A zone is also displayed in the main menu under **my groups**.

Edit/remove group (Figure 12)

The groups can be edited in the app or removed again at any time.

- Press **i** in the top right corner of the main menu.
All elements in the main menu are switched to edit mode.
- Select the group to be edited via the **i** on the corresponding group.
Details about the group, such as the switching state and integrated devices, are displayed.
- Then carry out the following actions as required:
 - Change the name of the group by activating the name line and making an entry via the keypad.
 - **Devices** to this group or remove it from this via the displayed checkboxes.
 - Group from the project **Delete**.
The group is no longer displayed in the main menu.

- With the exception of **Delete**, finally confirm all edit operations with **Save** or discard via **Back** .
The display returns to the main menu and displays the changes.
- Press **i** in the top right corner of the main menu to exit the edit mode.

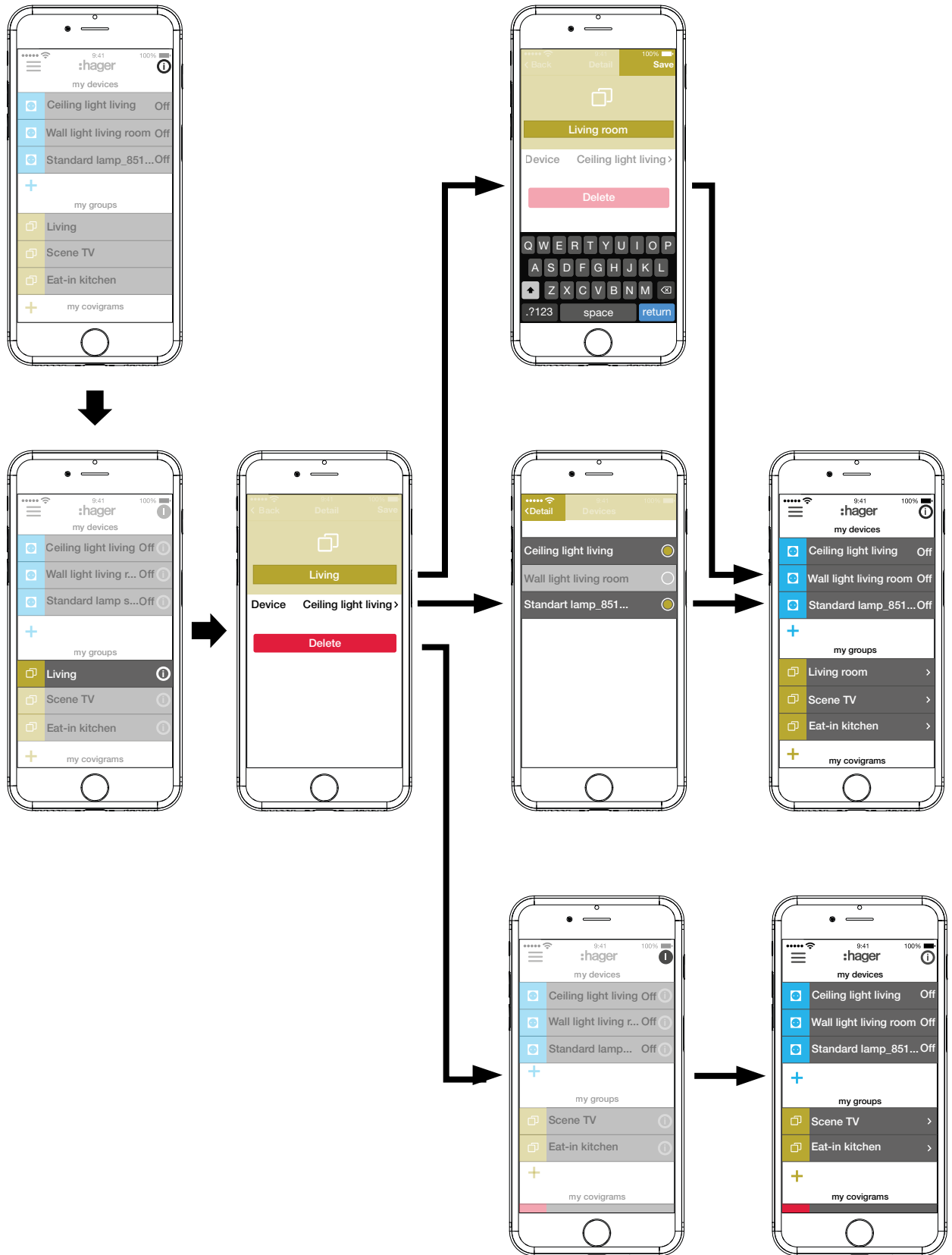


Figure 12: Edit/remove group

Create covigram

Covigrams are ideal for frequent or conditional actions that should be controlled and/or automatically triggered. A covigram defines a scene, in which one/several trigger/s start/s one or more actions.

Triggers and actions are defined via **If Then ...**-logic functions. In the course of this, several triggers are **OR/AND**-linked, while the actions are **AND**-linked.

Basically the following types of triggers can be defined:

– **Time:**

This allows a daily routine to be configured at a specific time or one/several weekday(s) to be selected, when one/several action(s) is/are to be triggered at a specific time.


– **Event:**

This allows a device with a respective switching/operating state to be selected, which then forms the trigger for one/several action(s).

 A group cannot be defined as a triggering event.

– **Celestial:**

Astro function that can be used to define sunrise or sunset actions. These variable times are set by IP localisation via the router's location and can be shifted by +/- 03:59 h.

 By default, the sun's position will trigger the defined action(s) daily. If the sun's position is to trigger actions only on certain days of the week, an additional and-linked time trigger must be added.

– **Play:**

When selecting the manual trigger, one/several action(s) can be started exclusively by an operation in the app. The manual trigger cannot be **and**-linked with other triggers.


Definable types of actions for the trigger are:


– **Device:**

One or several devices can be selected from all added devices and their switching/operating state, which should be reached after the trigger, can be defined.

– **Push notification:**

An individually created text message can be written for one/several triggers, which appears as a push message for all users in the app when triggered. Timely information can be helpful in order to initiate a countermeasure if required.

 Once the project has been handed over, the electrician does not receive a push message any more.

 In the event that the app is not opened, the push message is additionally output on the end device, if enabled.

– **Partial:**


If a zone is selected as an action, a heating zone can be controlled after triggering, for example, a new temperature setpoint is received or another operating state is switched to.

In this way, many combinations are possible.



As an example, three tasks will be implemented one after another in one covigram each:

Example 1: Temperature warning (Figure 13):

Task: If the room temperature drops below 18 °C in the bedroom or children's room, a message should be sent in order to check this actively and to initiate countermeasures if required.

- To do this, press the red **+** button.
The editing page **Covigramm** opens. The title line under  is activated.
- Give the covigram a name via the keypad and terminate the entry with the **Return** button.

Define trigger

- Press the **+** button under **If**
The page for defining a trigger opens.
- Select the type of trigger, in the example **Event**  (Figure 14).
The button of the trigger type is highlighted in red. All devices of the project are listed with symbolic buttons and their name.
-  The display can be swiped to the left and right.
- Select the device by pressing the symbolic button, in the example **Heating bedroom**.
Possible triggers are displayed.
- Select the trigger by pressing the symbolic button, in the example **Temperature Moves under**.
The button of the trigger is highlighted in red.
- Set the desired minimum temperature using the scroll wheel, in the example **18 °C**.
- Finish the setting of the trigger with **Save** or discard via **X**.
The trigger is displayed under **Covigramm**.
- Add another trigger in the same way if required, which is **OR**-linked, via the **+** button, in the example **OR**-linked in the top row **Heating children's room**.

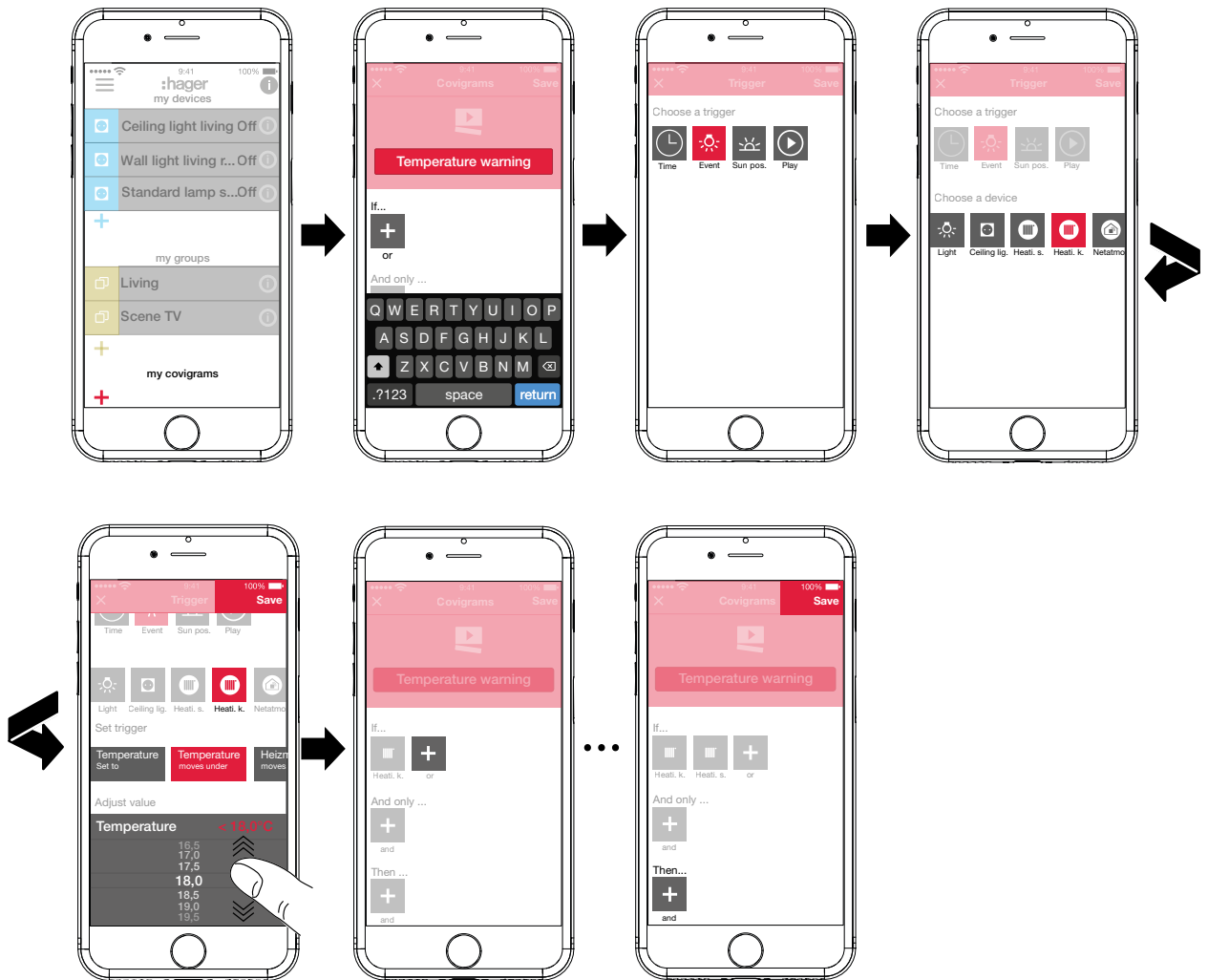



Figure 13: Covigram for example 1: Trigger

Define action

- Press the **+** button under **Then ...** .
The page for defining an action opens.
- Select the type of action, in the example **Push notification**  (Figure 14).
The button of the action type is highlighted in red. Only a possible action is displayed in the example.
- Select the action by pressing the symbolic button, in the example **Notification sent to every user**.
The button of the action is highlighted in red. The keypad and an input field for the message opens.
- Enter a message via the keypad.
- Save the action and message with **Save** or discard via **X**.
The triggers and action are displayed under **Covigramm**.
- Save the covigram again via **Save** or discard via **X**.
The view switches to the main menu. The created covigram is displayed under **my covigrams**.

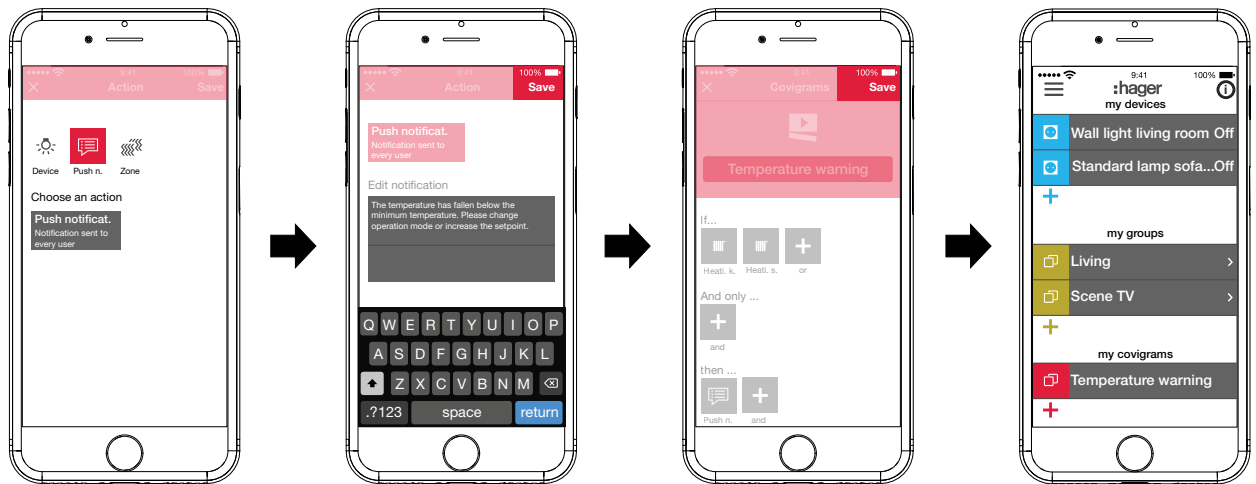


Figure 14: Covigram for example 1: Action

Example 2: Outdoor lighting (Figure 15):

Task: On Saturday and Sunday the outdoor lighting should be switched on earliest at 19:00 and on the other weekdays earliest at 17:00 every evening. In the course of this the outside lighting should only be switched on after sunset. This ensures, for example, that the outdoor area is illuminated at fixed times of arrival, such as after work in the winter months, and that switching does not occur during the summer months, when no lighting is required at the time of arrival.

- To do this, press the red **+** button.

The editing page **Covigramm** opens. The title line under is activated.

- Give the covigram a name via the keypad and terminate the entry with the **Return** button.

Define trigger

- In the file view of the covigram via **+** under **If ...** select the type of trigger, in the example **Zeit** .
- The buttons for triggering **Every day** or **Every weekday** are offered at a specific time.
- Press the **Every weekday** button.
- Select the days **Sa** and **Su**.
- Set the time for the action in the format **hour:min** using the scroll wheels - here **19:00** - and finish with **Save**.
- Add the second trigger for the remaining weekdays in the same way via **+** under **If ...** - for **Mo - Fr** at **17:00** and finish with **Save**.
- In addition, for all weekdays, select the second condition for triggering via **+** under **And only ...**; in the example, sun position with the sun position symbol.
- The buttons during the day and during the night are available with constantly adjusting sunrise and sunset times.
- Press the button during the night and confirm with **Save**.

In the detailed view of the covigram under **And only ...** is displayed

Define actions

- Select the types of actions via **+** under **Then ...**, in the example **Device** .
- All devices are displayed.
- Select a device - here light **Entry**.
- Upon the occurrence of one of the triggers, select the switching state of the device (switched on/switched off) via the buttons provided - in the example **Lighting entry Switched on** - and finish with **Save**.

- Add the remaining lights in the outdoor area via **+** in the same way as the action being executed simultaneously - light **Pavement**, light **Housewall**, ..., select the switching state **Switched on** and finish with **Save**.

- Complete the covigram with **Save**.

The covigram is displayed in the main menu.

- i** If the outdoor lighting should be switched off again at a specific time in the morning, a separate covigram must be created for this.

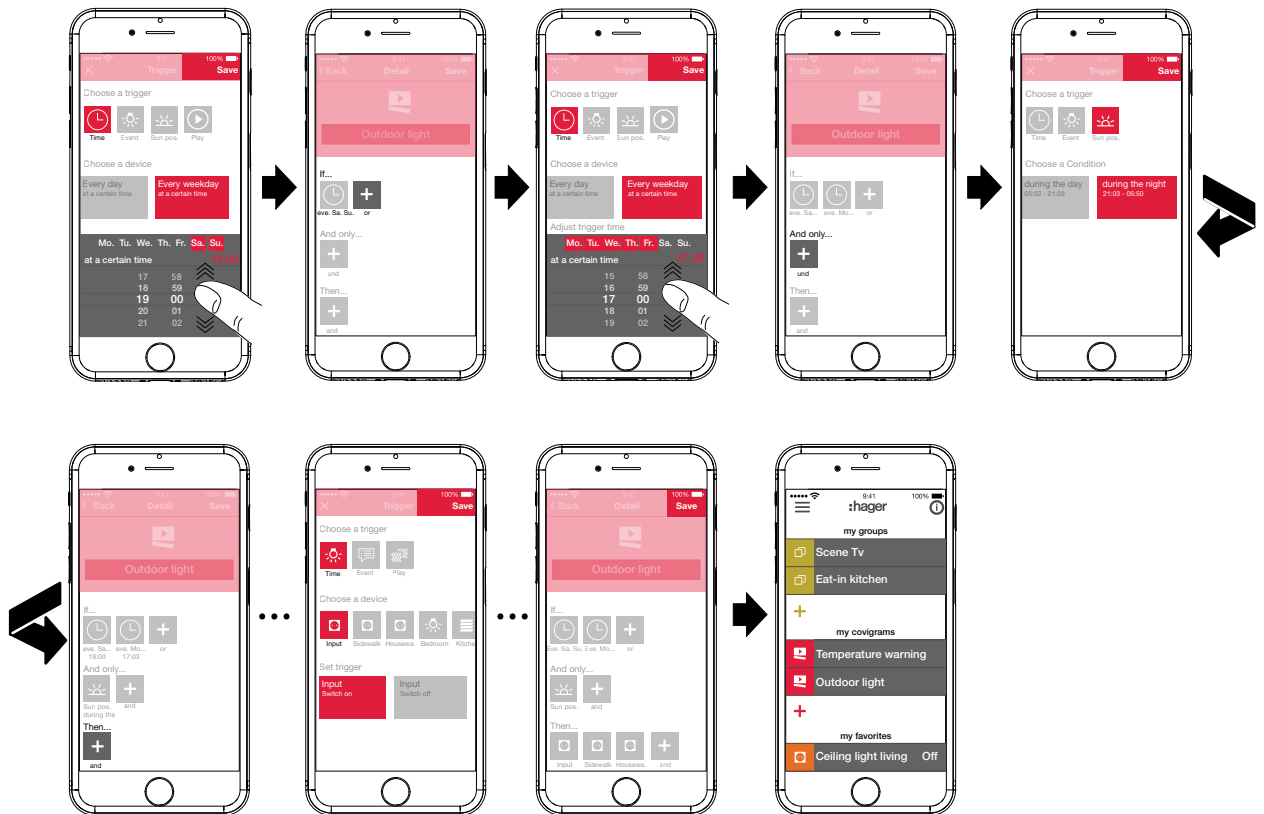


Figure 15: Covigram for example 2

Example 3: All OFF (Figure 16):

The entire lighting in the house should be switched off and all blinds closed by manually pressing a button, for example, when leaving the house or when going to bed.

- To do this, press the red **+** button.
The editing page **Covigramm** opens. The title line under **▶** is activated.
- Give the covigram a name via the keypad and terminate the entry with the **Return** button.

Define trigger

- In the file view of the covigram via **+** under **If ...** select the type of trigger, in the example **Play** **▶**.
The button for **Trigger covigram with Play button** appears.
- Activate button and finish with **Save**.
In the detailed view of the covigram under **▶ If ...** is displayed.

Define actions

- Aselect the types of action via **+** under **Then ...**, in the example **Device** ☹️.
All devices are displayed.
- Select a device - here **Ceiling light living**.
- By manually triggering, select the switching state of the device (switched on/switched off) via the buttons provided - in the example **Ceiling light living Switched off** - and finish with **Save**.

In the detailed view of the covigram under ☹️ **Then ...** is displayed.

- Add the remaining lights in the house via **+** under **If ...** in the same way - **Wall light living, Standard lamp, ...** -, select the switching state **Switched off** or when dimming, set the value **0%** einstellenu using the scroll wheel and finish with **Save**.

Now set all blinds in the house to closed.

- Select a device - here **Blind kitchen**.
The button for ... **Set to certain value** appears.
- Activate button, using the scroll wheel set the value to **100%** (closed) and finish with **Save**.
In the detailed view of the covigram ☰ under **Then ...** is added.
- Define all other blinds in the house in the same way as action.
- Complete the covigram with **Save**.

The covigram is displayed in the main menu.

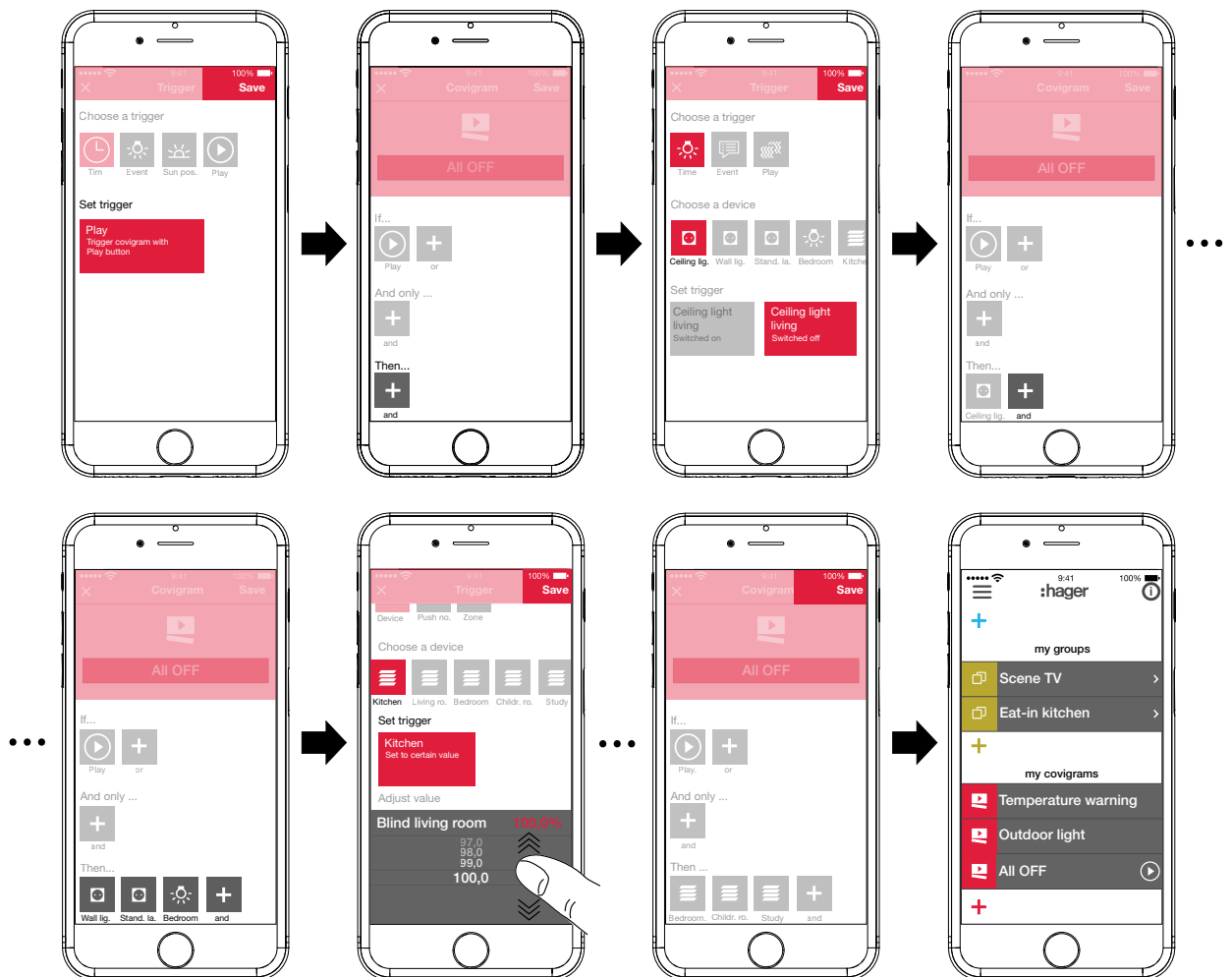


Figure 16: Covigram for example 3

Edit/remove covigram (Figure 17)

- Press **i** in the top right corner of the main menu.
All elements in the main menu are switched to edit mode.
- Select the covigram to be edited via **i** on the corresponding Covigram.
Details about the covigram are displayed.
- Then carry out the following changes as required:
 - Change the name of the covigram by activating the name line and make an entry via the keypad. Finish with the **Return** button.
 - Add further triggers under **If ... (or-linked)** or under **And only ... (and-linked)** via the **+** button.
The page for defining a further trigger opens. Proceed as described above.
 - Add further actions under **Then ...** via the **+** button.
The page for defining a further action opens. Proceed as described above.
 - Remove a covigram from the main menu via the **Delete Covigram** button.
- i** To edit or remove an action or trigger that has already been saved, press and hold the corresponding symbol. Select one of the buttons shown – **Edit** or **Delete** – and proceed as described above.
- With the exception of **Save**, finally confirm all edit operations with **Delete Covigram** or discard via **Back**.
The display returns to the main menu and displays the changes.
- Press **i** in the top right corner of the main menu to exit the edit mode.

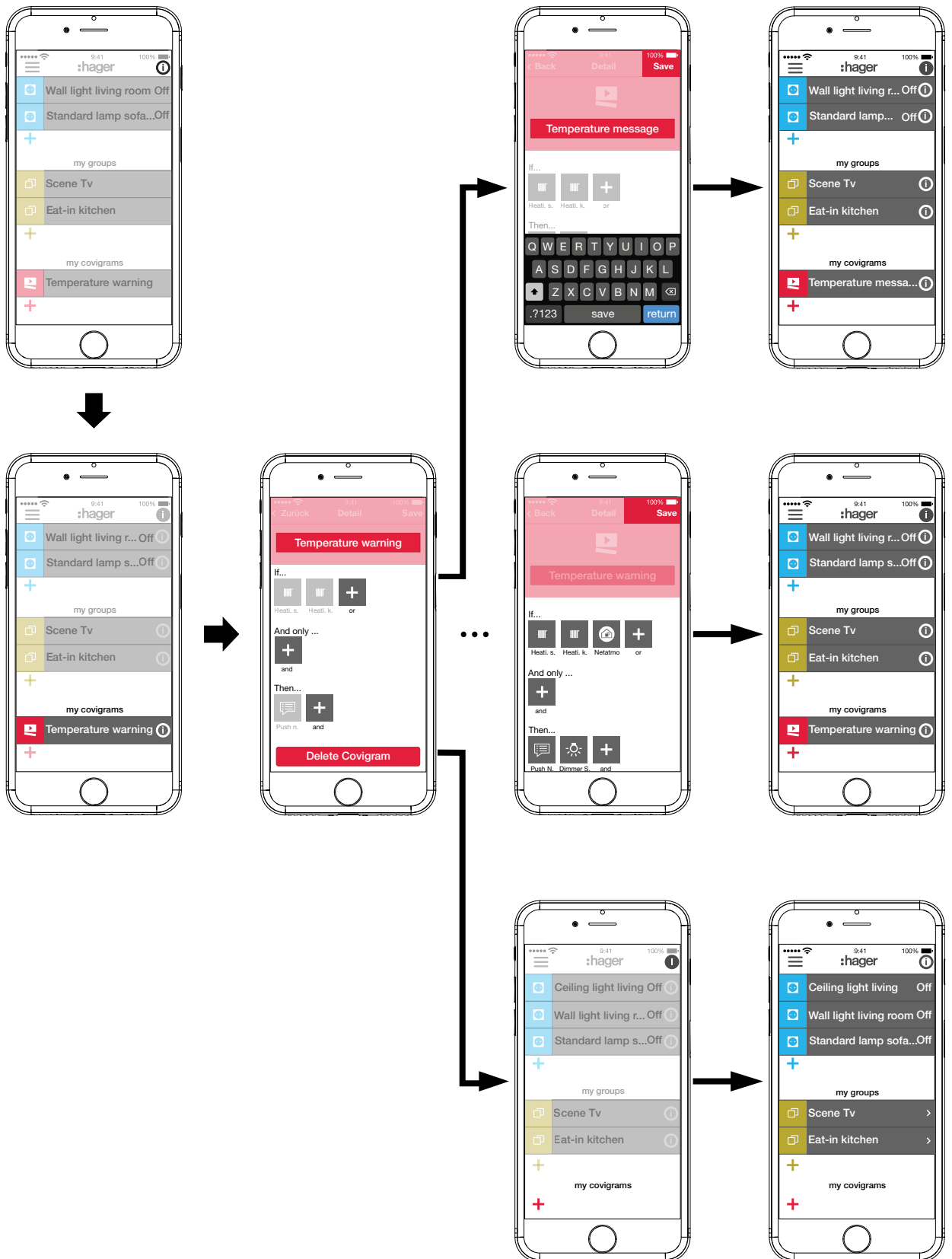


Figure 17: Edit/remove covigram

Add device to the favourites list (Figure 18)

Devices, whose connected loads are frequently operated, can be added for fast access under **my favorites**.

- To do this, press the orange **+** button.
A list with all devices that have not yet been defined as favourite is displayed.
- Add devices to **my favorites** by activating the checkbox.
- If necessary, change the order of the devices in the favourites list to the desired sequence via **≡** and using drag & drop.
- i** The new sequence is also applied to the My devices view. Each user can customise the arrangement as desired.
- Define the devices as favourites with **OK**.
The favourites are displayed in the main menu.



Figure 18: Define favourites

Remove device from the favourites list (Figure 19)

- Press **i** in the top right corner of the main menu.
All elements in the main menu are switched to edit mode.
- Select the device in the favourites list to be removed via **i** on the relevant device.
Details about the device, such as the switching state and the groups in which the device is integrated, are displayed.
- Press the **Remove from Favorites** button.
- With **Save** remove the device from **my favorites** or discard via **Back**.
The removed device is no longer displayed in the main menu under **my favorites**.
- Press **i** in the top right corner of the main menu to exit the edit mode.

Additional devices can be added to or removed from the favourites list in the same way.

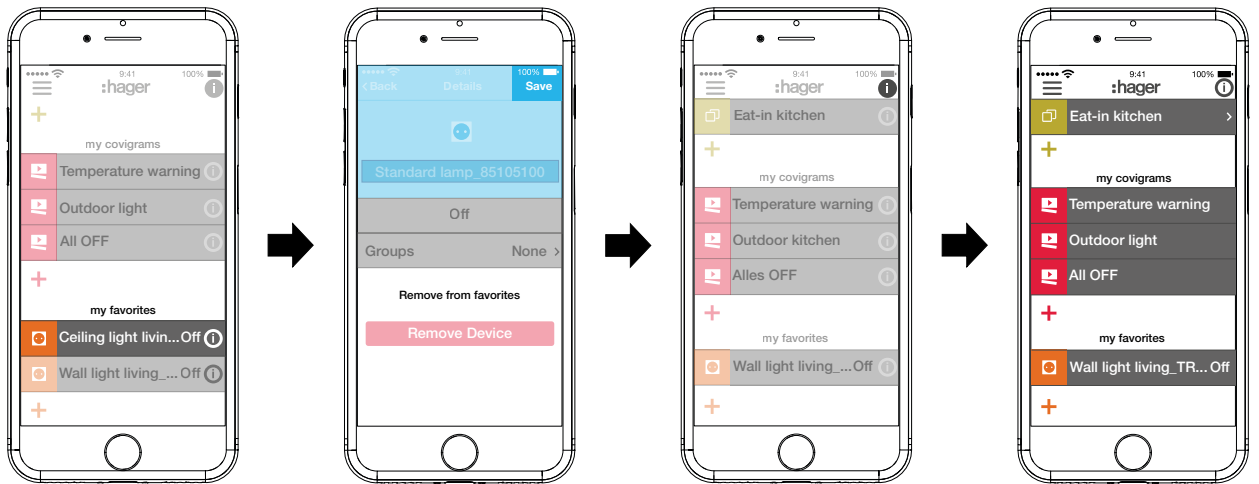


Figure 19: Remove favourites

Change settings (Figure 20)

Basic changes in the app can be implemented and some information can be viewed under the settings.

- Call up the page for settings under ☰ via ⚙️.
- Possible settings or further information are indicated by ➤ in the right margin of the corresponding line. If such a line is selected, a new page opens with the corresponding setting options (see Table 2).
- Confirm any changes to the settings with **Save**, discard via ✕ or return to the previous page without saving via ⬅️.
- Finally, exit the settings via ✕.

Setting	Selection	Information	Format/Detail/Action
coviva Smartbox			
		coviva ID	123456789012
Date/time		Time zone Time period Country	DD.MM.JJJJ, hh:mm CET Summer time Germany
Language ²⁾	➤ English, Francais, Italiano, Deutsch, Svenska, Nederlands, Espanol, Polski, Portugues, Türkce, ...		
		coviva Version	2.6.7 (cc24680)
		KNX Version	1.1.13
		Alarm Version	1.0.6
User (see also Add user (Figure 7))			
My account		Name	First name Last name
Peter Administrator	➤ ➤	Contact	E-mail Phone
		Profile	E-mail (user name) rights Change password? ➤
All users	➤	I	
	Administrator	➤ ➤	all profile data (see above) only display, not changeable
	Other		
	Electrician	➤ ➤	all profile data (see above) only display, not changeable access for electricians for remote maintenance (de) activatable
	unlimited	➤	all profile data changeable
	Add user	+	see Add user (Figure 7)
Network			
		IP address	192.168.178.23
WLAN	coviva	➤ Hotspot function activated	Name coviva - 123456789012
		Hotspot function deactivated	Display of all WLAN networks - Select WLAN network. - Enter WLAN password.

²⁾ The app generally uses the language set in the relevant end device. This setting only defines the language for emails and push messages.

Table 2: Settings and system information

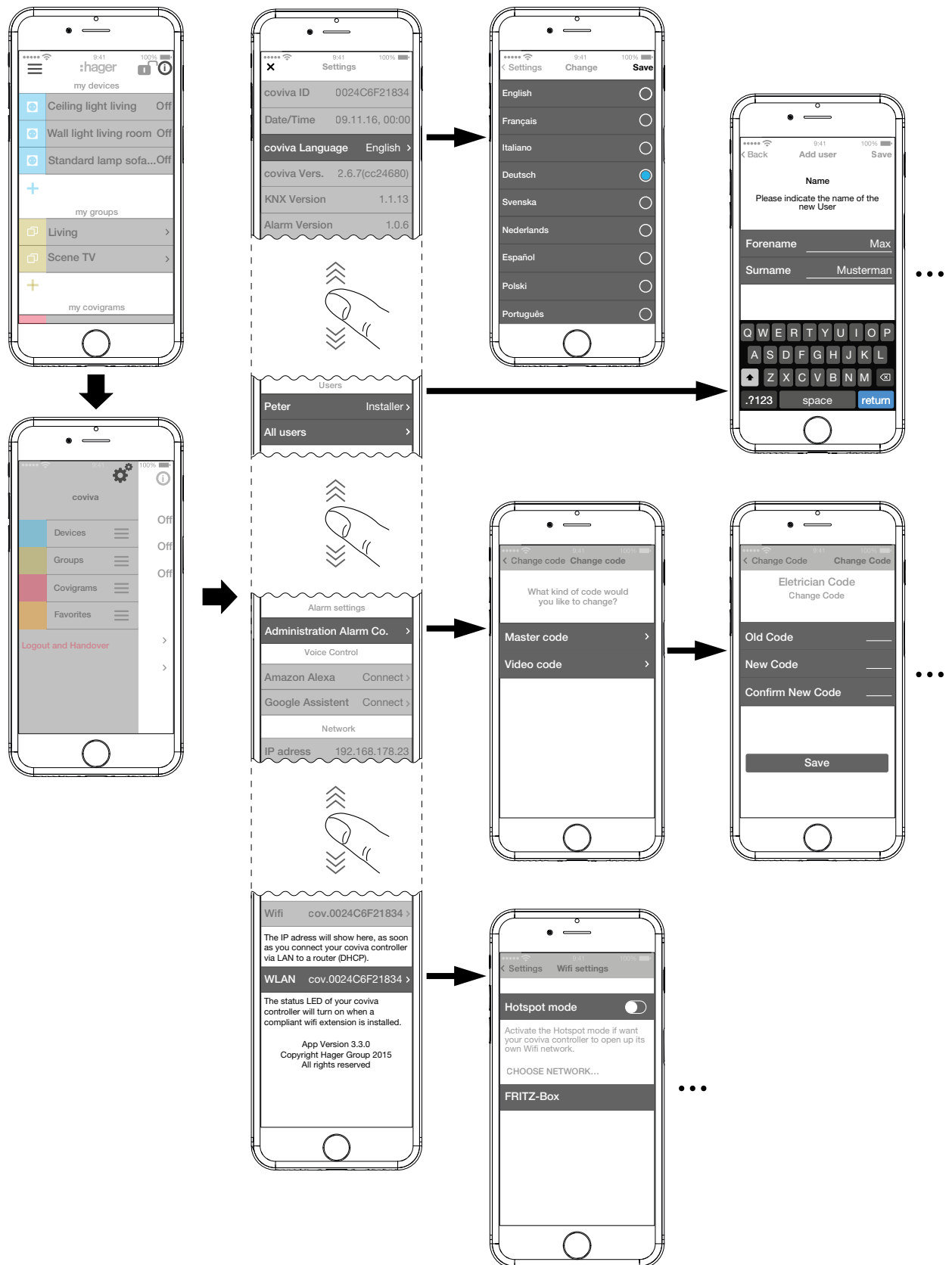


Figure 20: Call up/change settings

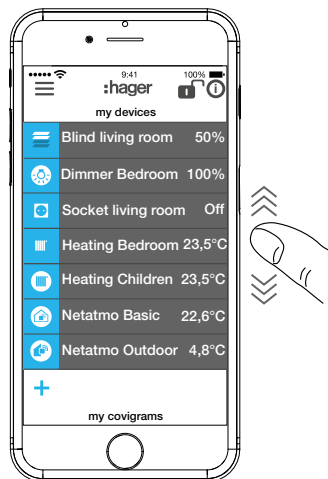
4 Operation

Operating concept

After logging in to the app (see *Log in to the app as administrator*) the main menu is opened. Distinctions are made between the following categories:

- My devices
- My groups
- My covigrams
- My favourites

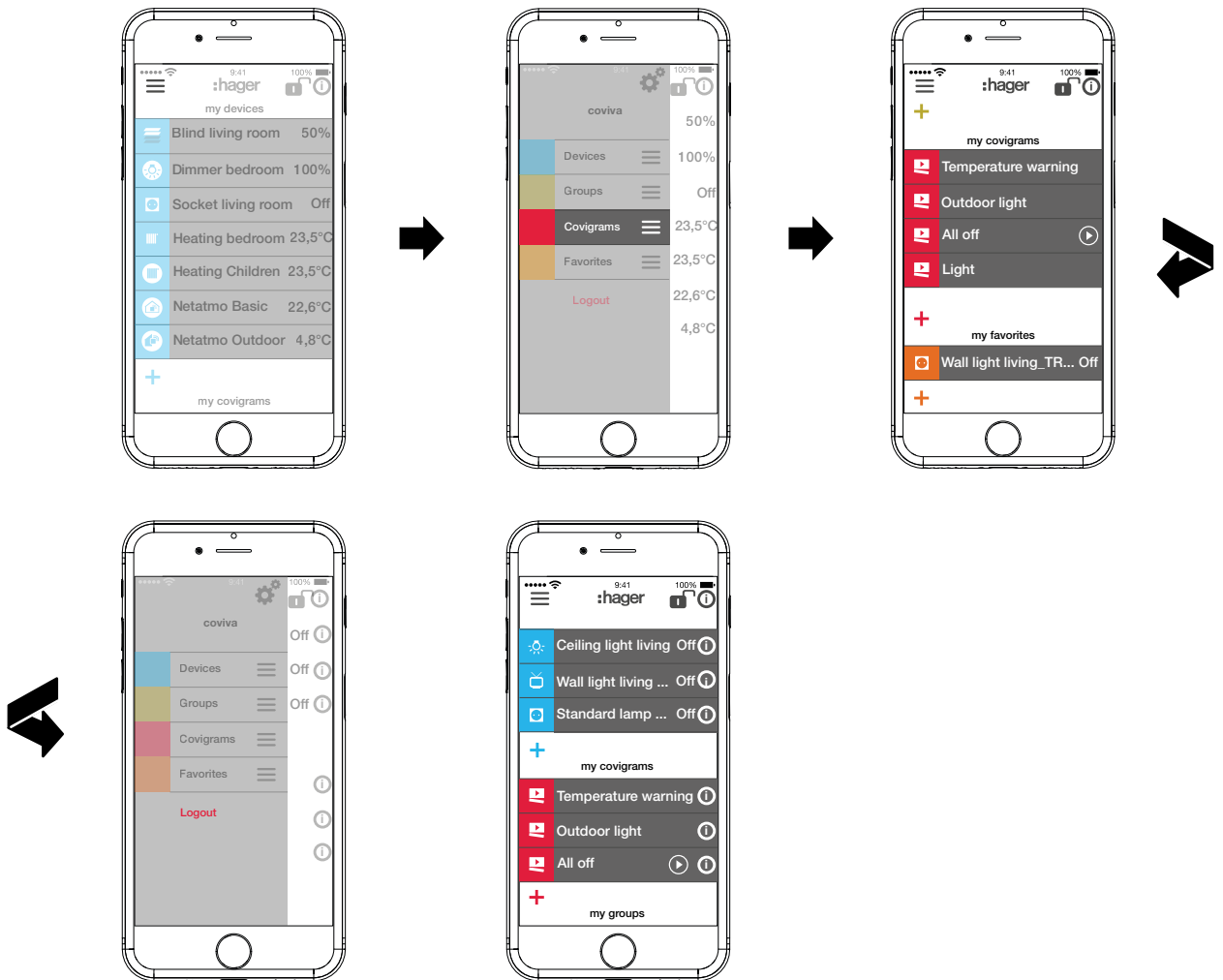
You access these categories in the main menu by swiping (mobile app) or scrolling (web app) up or down.



Alternatively, you can select the desired category directly via ☰.

The sequence of the categories can be changed via ☰ using drag & drop.

i The individual devices in the My devices category can be sorted via the favourites list (see Add device to the favourites list).



Every user can operate all configured applications and retrieve information regardless of the user profile.

The operating concept is intuitive and corresponds to the routines of other app operations. Below is an overview of the basic operating modes and applications in the coviva app (see *Table 3*).

i Instead of a touch operation or a swipe movement, operation via the web app takes place solely by mouse click or by dragging with the left mouse button pressed down as well as by scrolling.

Display	Operation/display	Applications (as an example)
My devives (Operation): Open/close the display by touch in the corresponding devices line		
	Touch →switch ON/OFF Display of the switching state	Light control: - Switch light - Switch load on socket outlet
	Swipe to the left/to the right →switch ON/OFF, dim LIGHTER/DARKER Display in % (0%: OFF, 100%: max. brightness)	Light control: - Set brightness of a light

	<p>Swipe to the left /to the right → move UP/DOWN</p> <p>Display in % (0 %: moved up, 100 %: moved down)</p> <p>Change slat position (blind) Display in % (0% open, 100 % closed)</p> <p>i A "spinner" is displayed in the symbol field until the end position is reached.</p>	<p>Blind control:</p> <ul style="list-style-type: none"> - Movement position of a blind/roller shutter - Slat position of a blind
	<p>Swipe to the left /to the right → move IN/OUT</p> <p>Display in % (0 %: retracted, 100 %: extended)</p>	<p>Awning control</p> <ul style="list-style-type: none"> - Movement position of an awning
	<p>Touch +/- → increase/decrease value</p> <p>Touch on symbol → change operating mode</p> <p>Display of the measured temperature</p>	<p>Heating control:</p> <ul style="list-style-type: none"> - Adjust setpoint in 0.5°C increments - Select operating mode Comfort, Night Reduction, Frost Protection
<p>My devices (Information): Open the display in setting mode via i on the corresponding devices line</p>		
	<p>Display the measured sensor values with number and measuring unit</p>	<p>Physical sensors: Measured values of a weather station, such as:</p> <ul style="list-style-type: none"> - Indoor temperature - Relative humidity indoors - CO₂ content of the indoor air - Volume in the room - Air pressure indoors <p>i With other modules the corresponding data must be read off from outdoor sensors.</p>
<p>i Display and operation of connected devices of other manufacturers see <i>appendix</i>.</p>		
<p>My groups:</p>		
<p>Selection by touch on > in the corresponding group line</p>		
	<p>All devices of the group are displayed as under My devices and can be operated as described above.</p>	<p>Calling up a device list with a touch, for example:</p> <ul style="list-style-type: none"> - all lights on the ground floor - all loads in the living/dining/kitchen area
<p>My covigrams:</p>		
<p>Open/close the display by touch in the corresponding Covigram line</p>		
	<p>Touch → activate/deactivate</p>	<p>Operate several loads simultaneously, event-driven, for example:</p> <ul style="list-style-type: none"> - Switch on all outdoor lights at twilight.
		<p>i If the event has already occurred when activating a covigram, the stored action is not executed. The covigram must be activated before the event occurs.</p>
	<p>Touch → manual triggering of a scene</p>	<ul style="list-style-type: none"> - Switch OFF all loads when leaving the house.

My favourites: Open/close the display by touch in the corresponding favourites line		
	All devices of the favourites list are displayed as under My devices - but in orange - and can be operated as described above.	Operate the most-used devices grouped in a list each with a touch

Table 3: Operating concept

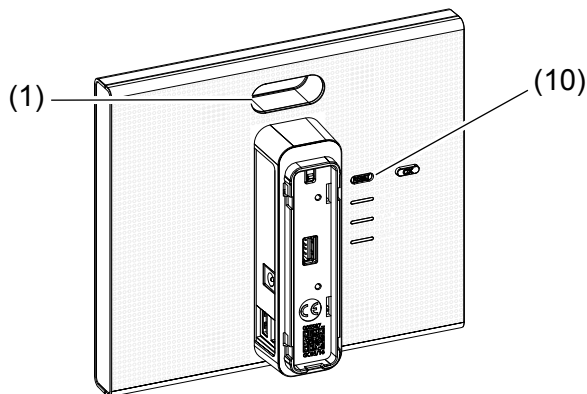
i The smartbox can be used in the local environment even without an Internet connection provided that no applications have to be controlled, which only function online, such as remote access, notifications or connected devices of other manufacturers.

Carry out a networkreset

A manual network reset can be performed on the smartbox.

Reset Mode	Trigger	Consequences of the reset
Network reset	Loss of the WLAN access key	<ul style="list-style-type: none"> - Resetting of the network settings - Activation of the local access <p>i Other settings, project and user profiles remain unchanged.</p>

Table 4: Reset



- Keep **RESET** button (10) pressed for more than 5 seconds, until the RGB LED display (1) is slowly flashing blue.
- Release **RESET** button (10) briefly and press once again to confirm the selection of the reset mode.

Rapid blue flashing of the RCB LED display (1) confirms the successful reset.

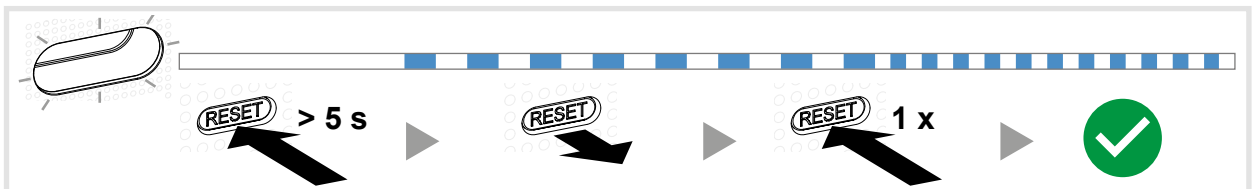


Figure 21: Network reset

RGB LED display

The smartbox has a display (1) for signalling errors that occur or for displaying the process of operations (see *Table 5*).

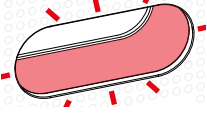
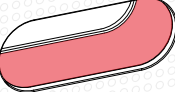
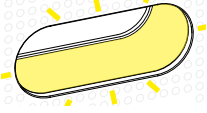

signal		Cause
	Flashing red	Critical warning, such as fire or burglary
	Permanent red light	Hardware or software error
	Flashing yellow	Technical warning, such as low-battery status of a device in the installation
	Flashing blue	Update, a software update is being installed

Table 5: RGB LED display (1)

Remote maintenance

The smartbox allows convenient remote access by the electrician in order to work in the project without having to be onsite with the customer.

With remote access it is possible, for example:

- to check the state of the installation
- to adjust the configuration
- to change settings
- to view event logs
- to add or remove users
- to create or change covigrams

Remote access is first possible after project take over by the administrator. The electrician remains authorised to access the Smartbox even after handing over the project, unless the administrator deliberately deactivates this.

i Remote access is possible either via the mobile app or via the web app (see *Call up coviva web app*).

Activate/deactivate remote access

The electrician retains access rights even after the project is handed over, unless the administrator deliberately deactivates this.

The Smartbox is online.

- Call up user settings for the electrician directly via the lock symbol, opened in the header.

Or:

- In the main menu press ☰ and call up the settings with ⚙️.
- Select **All users**.
- The **Users** view is called up.
- Select the electrician's user profile.
- Then activate/deactivate the **Installation access**.

The electrician can once more/no longer edit the project remotely.

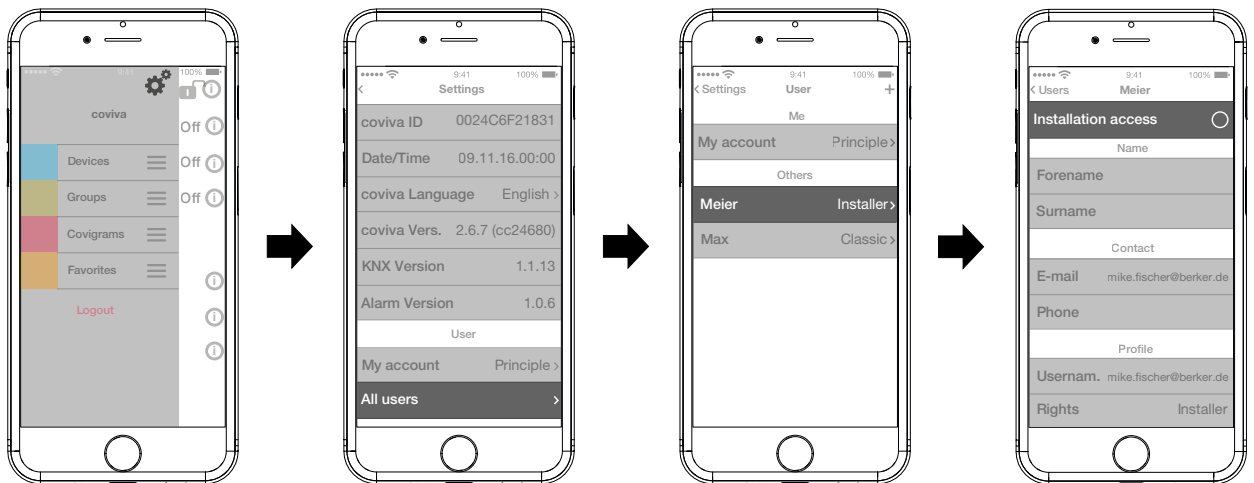


Figure 22: Activate/deactivate remote maintenance

Appendix

User profiles and rights

Rights	User profile		
	Electrician ¹⁾	Administrator	User name
Define administrator	■		
Add user	■	■	
Remove user	■	■	
Create a new project	■		
Add/delete further connected devices	■	■	
Add/remove comfort device	■		
Add/remove safety devices	■		
Create groups	■	■	■
Edit/remove groups	■	■	■
Create covigrams	■	■	■
Edit/remove covigrams	■	■	■
Add to favourites	■	■	■
Remove from favourites	■	■	■
Install update before project handover	■		
Install update after project handover		■	
Hand over project	■		
Accept project		■	
Authorise remote maintenance		■	
Carry out remote maintenance	■		
Change settings	■	■	■
Sort categories	■	■	■
Sort devices	■	■	■

³⁾ These rights apply for the entire project process and during remote maintenance

Table 6: User profiles and rights

Further connected devices

Voice command:

- Amazon: Alexa devices
- Google Assistant: Home devices

Temperature control:

- Tado: Smart Thermostat

IP camera:

- Netatmo: IP security cameras

Accessories

WLAN stick	TKH180
WLAN adapter	TKH181
Replacement requirement	
Power supply	TKC110

Warranty

We reserve the right to make technical and formal changes to the product in the interest of technical progress.

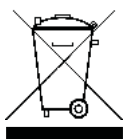
Our products are under guarantee within the scope of the statutory provisions.

If you have a warranty claim, please contact the point of sale or ship the device postage free with a description of the fault to the appropriate regional representative.

Applicable in all Europe CE and in Switzerland

Hereby, hager Controls, declares that Coviva is in compliance with the essential requirements and other relevant provisions of directive 1999/5/CE (until June 2017) and directive 2014/53/UE (from June 2017).

The CE declaration of conformity can be consulted on the site hagergroup.com



Correct Disposal of This product (Waste Electrical & Electronic Equipment).

(Applicable in the European Union and other European countries with separate collection systems)

This marking shown on the product or its literature indicates that it should not be disposed with other household waste at the end of its working life. To prevent possible harm to the environment or human health from uncontrolled waste disposal, please separate this product from other types of wastes and recycle it responsibly to promote the sustainable reuse of material resources.

Household users should contact either the retailer where they purchased this product, or their local government office, for details of where and how they can take this device for environmentally safe recycling.

Business users should contact their supplier and check the terms and conditions of the purchase contract. This product should not be mixed with other commercial wastes of disposal.