

Slotted Trunking DNG

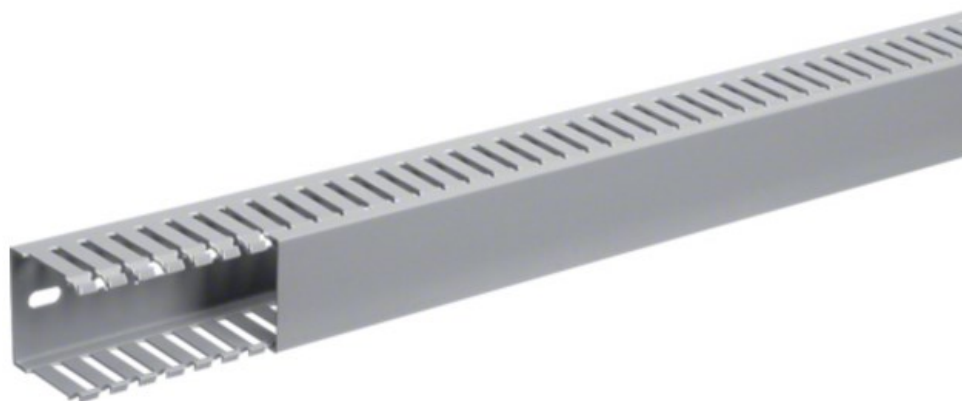


Fig. 1: DNG5005007030B



- certified according to EN 50085-2-3
- wiring duct dimensions according to DIN 43659
- base holes according to EN 50085
- self-extinguishing according to UL94 V0
- temperature-resistant - 25°C bis + 60°
- UL listed File-Nr.: E48414
- CSA listed File-Nr.: 22009

Base+Cover			
Reference	Height	Width	Length
DNG2002007030B	20 mm	20 mm	2000 mm
DNG2502507030B	25 mm	25 mm	2000 mm
DNG2503707030B	25 mm	37 mm	2000 mm
DNG3702007030B	37 mm	20 mm	2000 mm
DNG3703707030B	37 mm	37 mm	2000 mm
DNG5002007030B	50 mm	20 mm	2000 mm
DNG5002507030B	50 mm	25 mm	2000 mm
DNG5003707030B	50 mm	37 mm	2000 mm
DNG5005007030B	50 mm	50 mm	2000 mm
DNG5007507030B	50 mm	75 mm	2000 mm
DNG5010007030B	50 mm	100 mm	2000 mm
DNG5012507030B	50 mm	125 mm	2000 mm
DNG7502507030B	75 mm	25 mm	2000 mm
DNG7503707030B	75 mm	37 mm	2000 mm
DNG7505007030B	75 mm	50 mm	2000 mm
DNG7507507030B	75 mm	75 mm	2000 mm
DNG7510007030B	75 mm	100 mm	2000 mm
DNG7512507030B	75 mm	125 mm	2000 mm
DNG10005007030B	100 mm	50 mm	2000 mm
DNG10007507030B	100 mm	75 mm	2000 mm
DNG10010007030B	100 mm	100 mm	2000 mm

Cover		
Reference	Width	Length
DN2002027030	20 mm	2000 mm
DN3703727030	37 mm	2000 mm
DN5005027030	50 mm	2000 mm
DN5007527030	75 mm	2000 mm
DN5010027030	100 mm	2000 mm
DN5012527030	125 mm	2000 mm

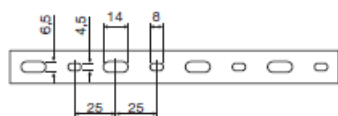


Fig.2: DN5005027030

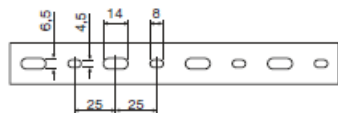
Wire Retainer	
Reference	matches to
LK500503	DNG5005007030B
LK500753	DNG5007507030B
LK501003	DNG5010007030B
LK501253	DNG5012507030B
DN750373	DNG7503707030B
LK750503	DNG7505007030B
LK750753	DNG7507507030B
LK751003	DNG7510007030B
LK751253	DNG7512507030B
DN1000503	DNG10005007030B
DN1000753	DNG10007507030B
DN1001003	DNG10010007030B



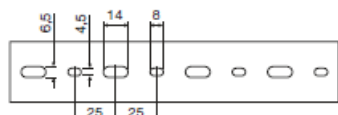
Fig.3: DN750373



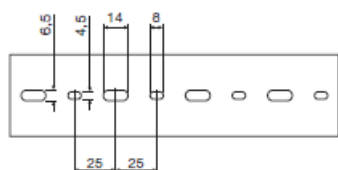
for duct width 20 mm



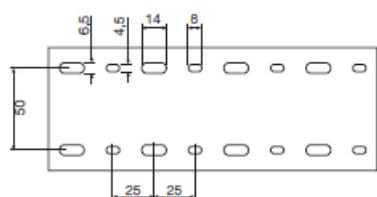
for duct width 25 mm



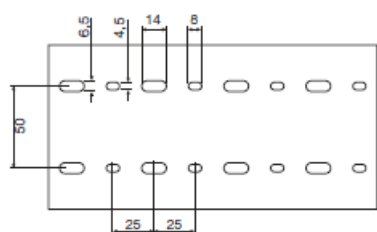
for duct width 37 mm



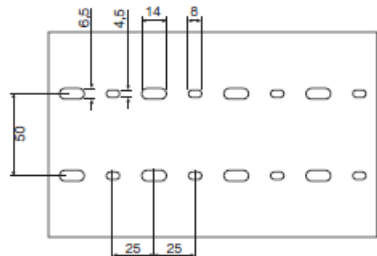
for duct width 50 mm



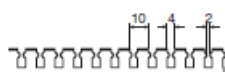
for duct width 75 mm



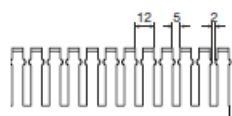
for duct width 100 mm



for duct width 125 mm



for duct height 20 mm



for all other heights

