

h250...h1000



- (FR) Interverrouillage mécanique câble HX.065H
- (GB) Interlocking wire type HX.065H
- (DE) Mechanische Verriegelung mit Kabel HX.065H
- (IT) Interblocco meccanico a cavo HX.065H
- (ES) Enclavamiento mec. tipo cable int. HX.065H
- (NL) Mechanische vergrendeling d.m.v. kabel HX.065H
- (PT) Encravamento mecânico por cabo para HX.065H
- (NO) Mekanisk forriglingswire HX.065H
- (GR) Μη ανικτή ανδάλωση HX.065H
- (PL) Blokada mechaniczna linkowa HX.065H
- (RU) Тросовая механическая блокировка для HX.065H
- (CN) 壳架缆绳联锁 HX.065H

- Notice d'instructions
- User instructions
- Montageanleitung
- Istruzioni di montaggio
- Instrucciones de uso
- Gebruiksaanwijzing
- Instruções de instalação
- Bruksanvisning
- Οδηγίες χρήσεως
- Instrukcja obsługi
- Руководство по эксплуатации
- 用戶手冊

3 P - 4 P

x 2

x 1

x 1

x 1

	A (mm)
HXC065H (h250)	28
HXD065H (h400 h630)	28
HXE065H (h800 h1000)	0

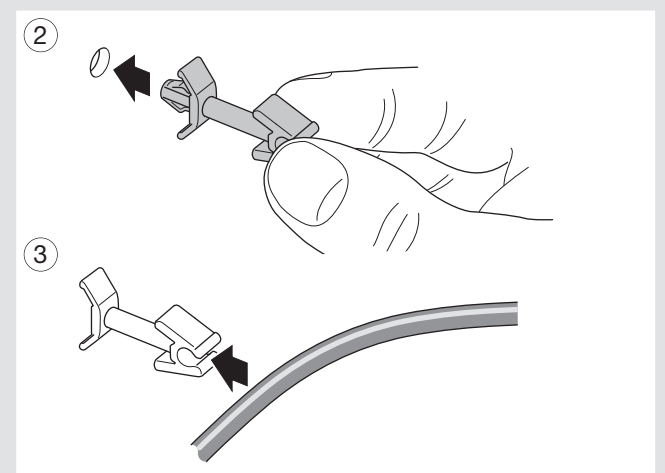
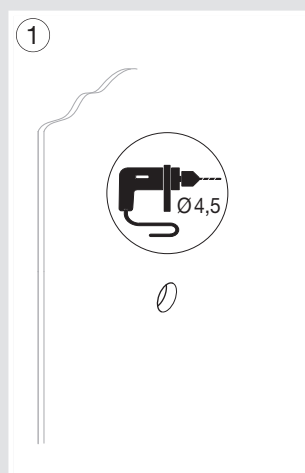
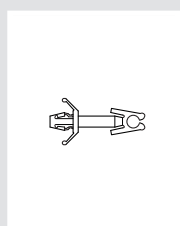
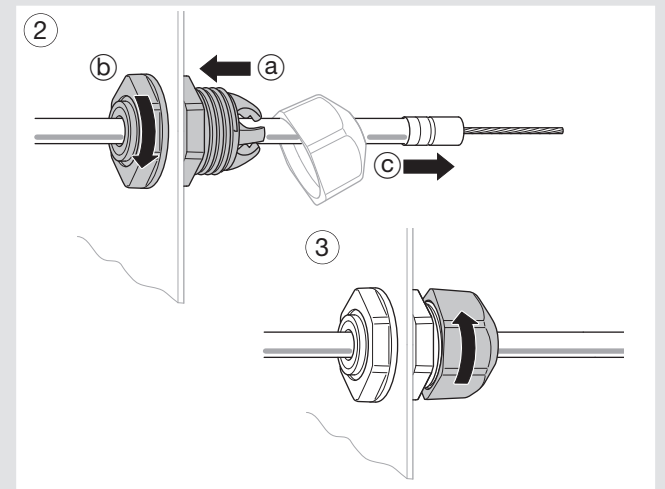
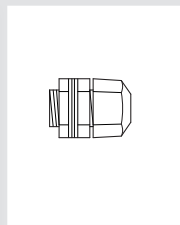
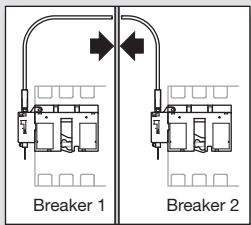
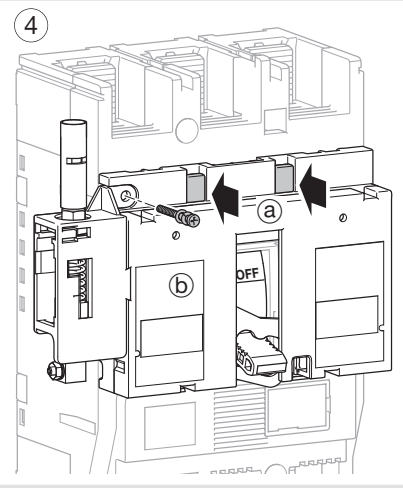
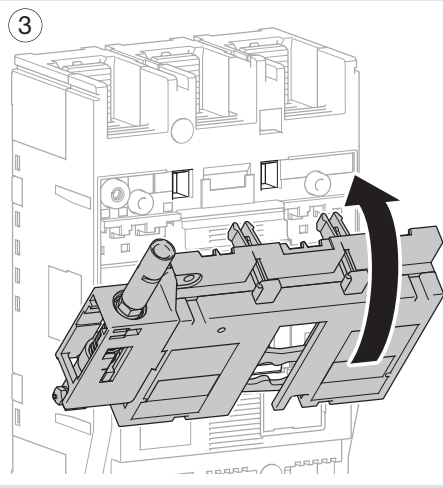
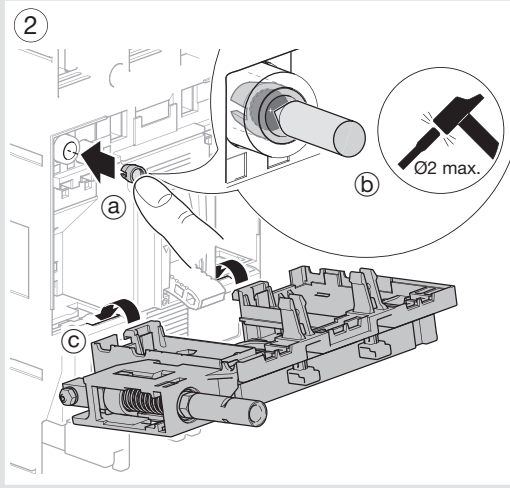
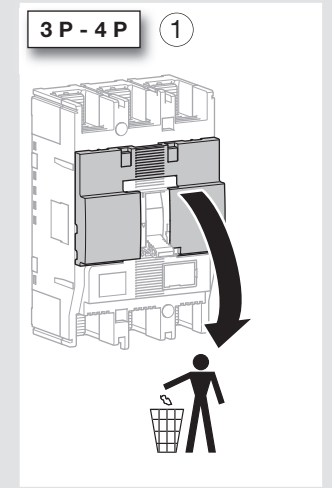
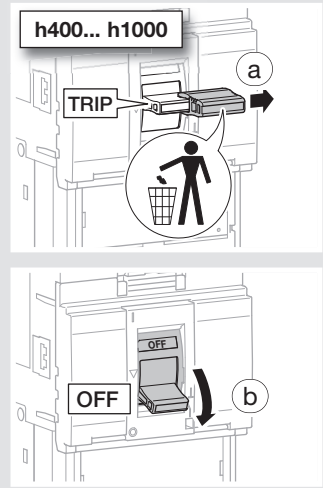
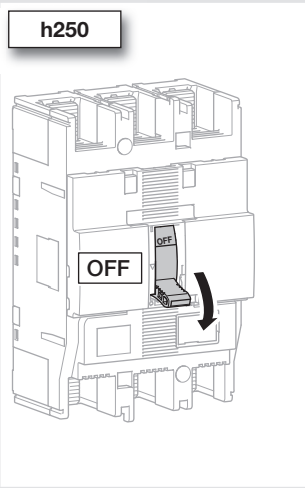
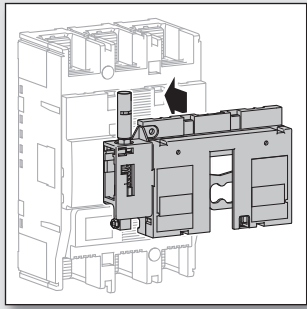
OK

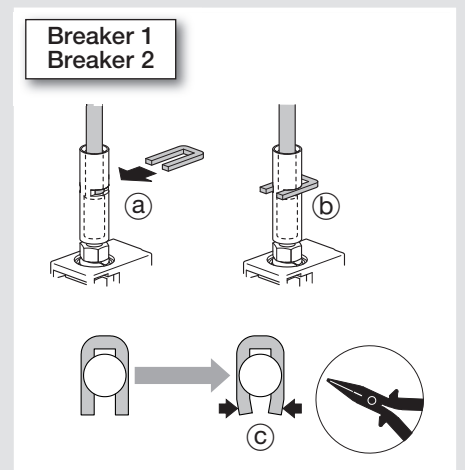
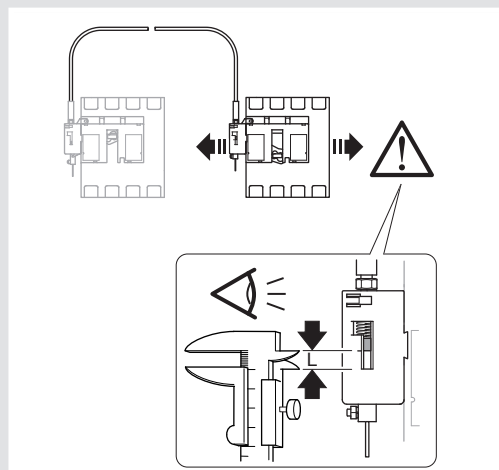
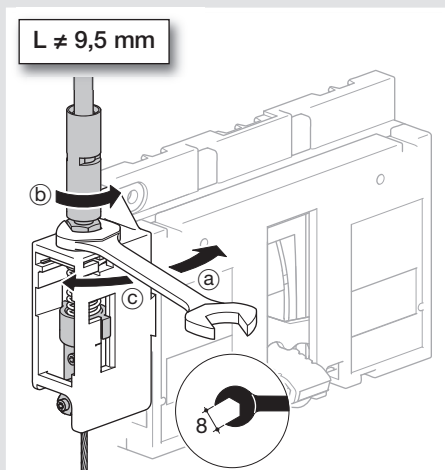
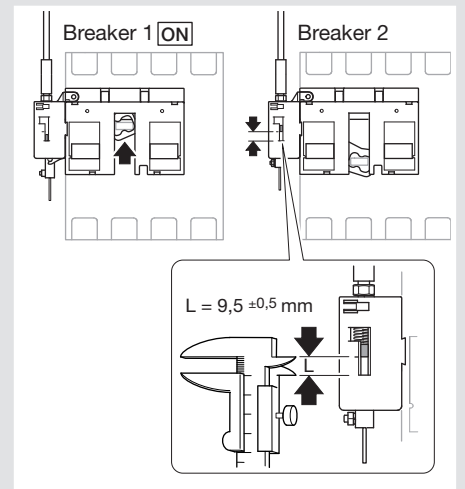
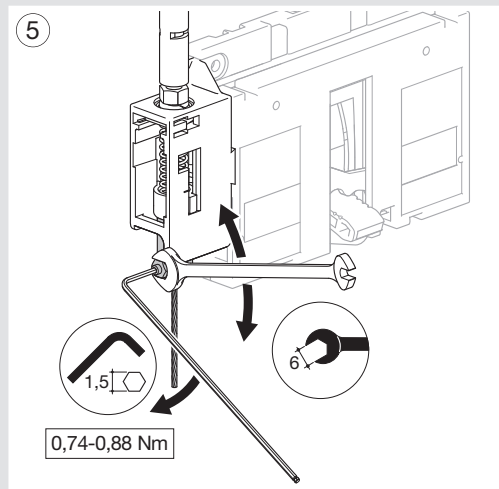
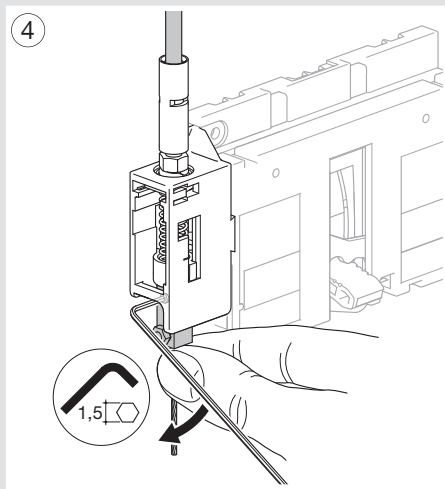
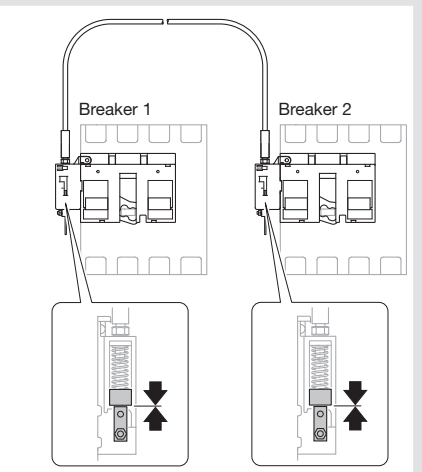
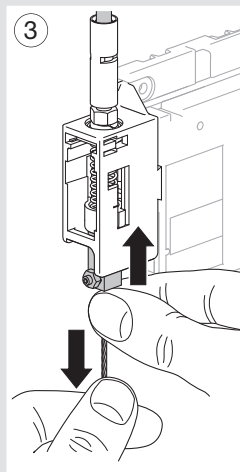
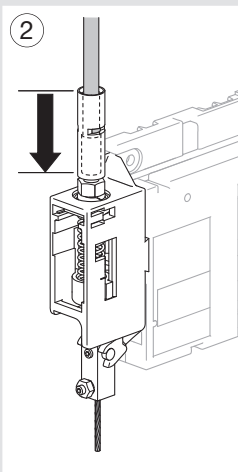
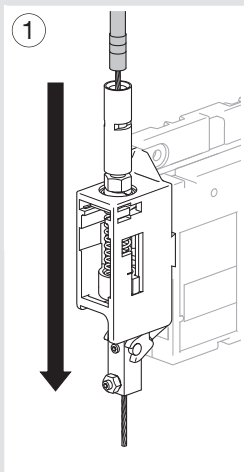
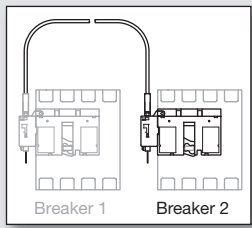
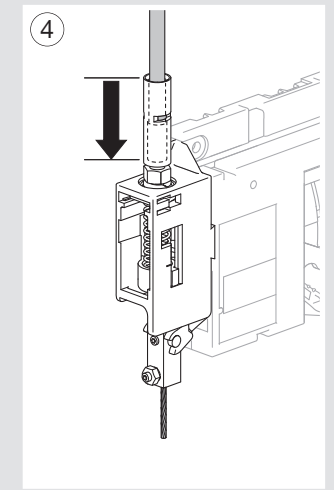
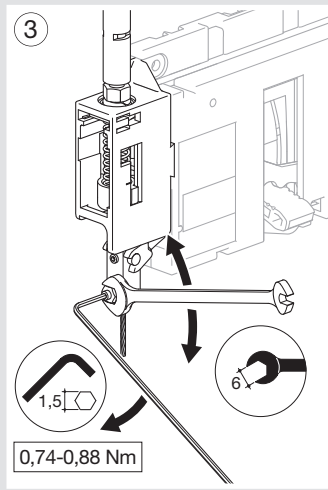
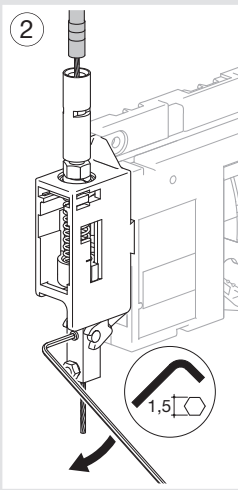
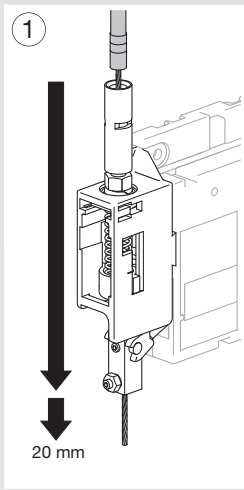
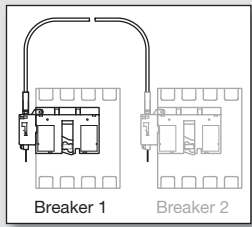
Breaker 1

Breaker 2

Breaker 1

Breaker 2





- Vérification du montage
- Check the correct assembly
- Überprüfung der korrekten Ankopplung
- Verifica accoppiamento
- Verificación del acoplamiento
- Controle van de juiste koppeling
- Verificação do acoplamento
- Funksjonstest
- Έλεγχος σωστής σύνδεσης
- Sprawdzenie poprawności zainstalowania
- Контроль правильности взаимной блокировки
- 确认正确联接

