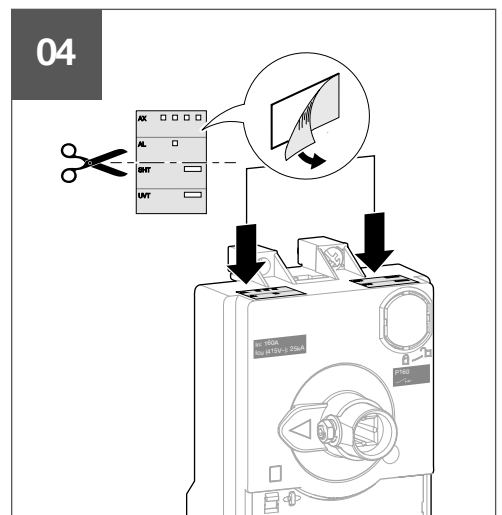
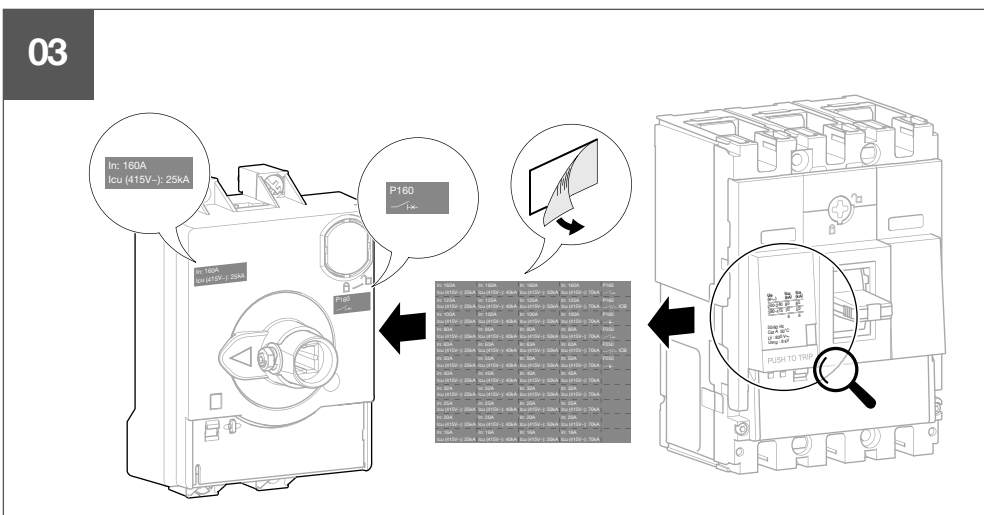
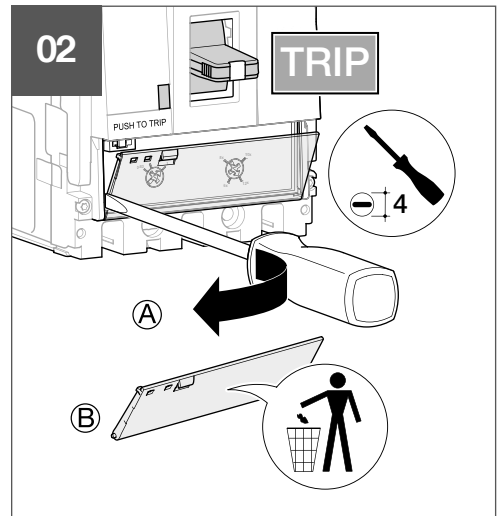
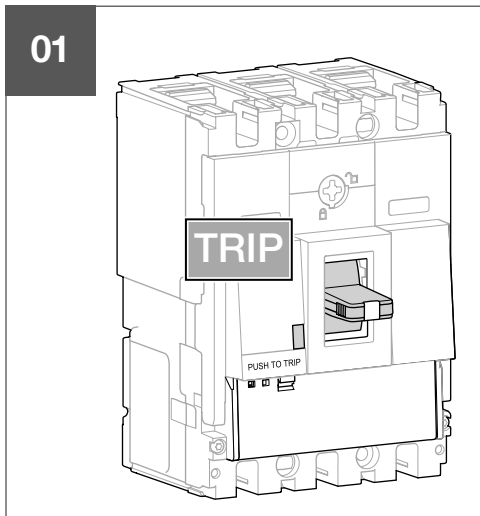
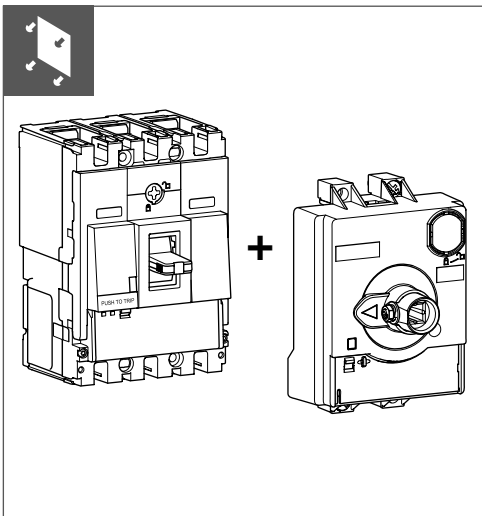
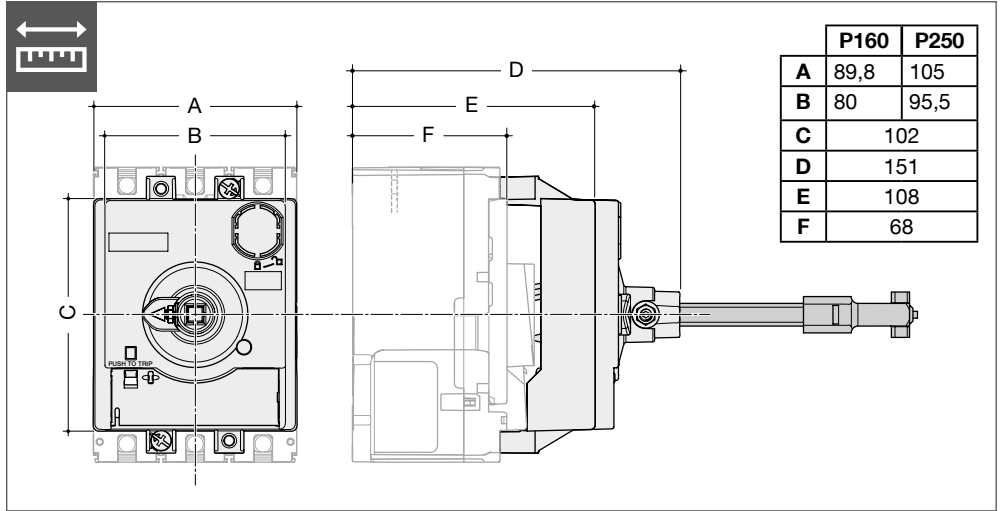
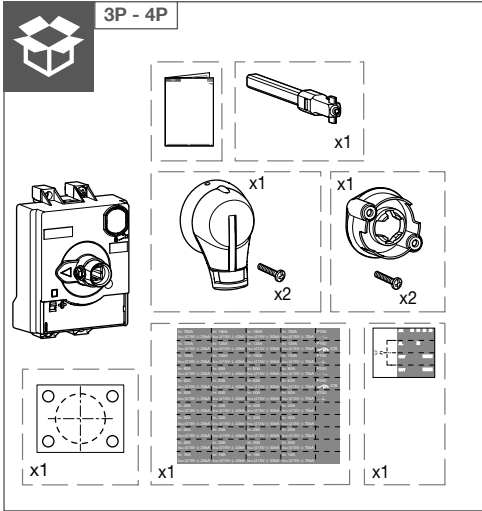
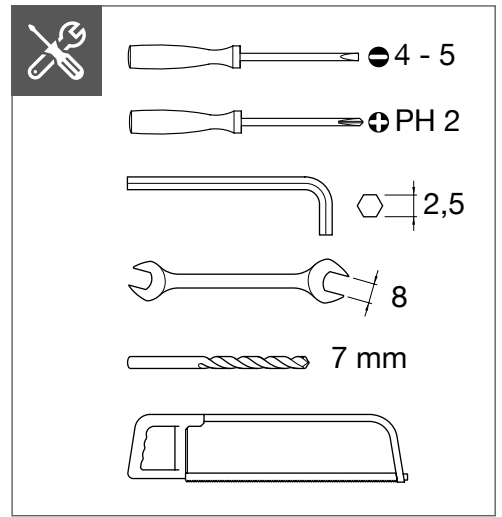
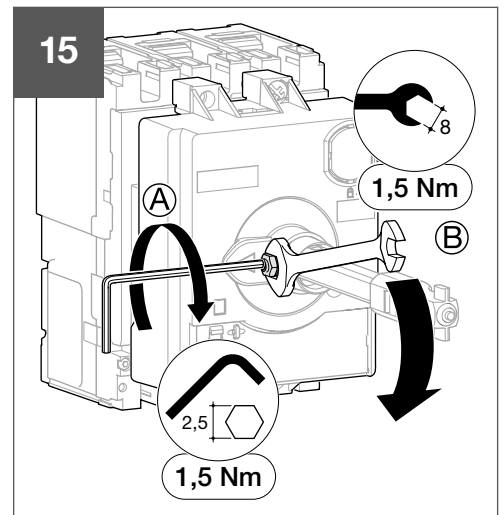
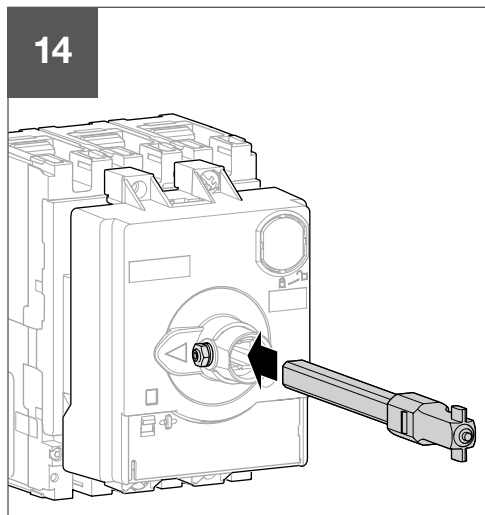
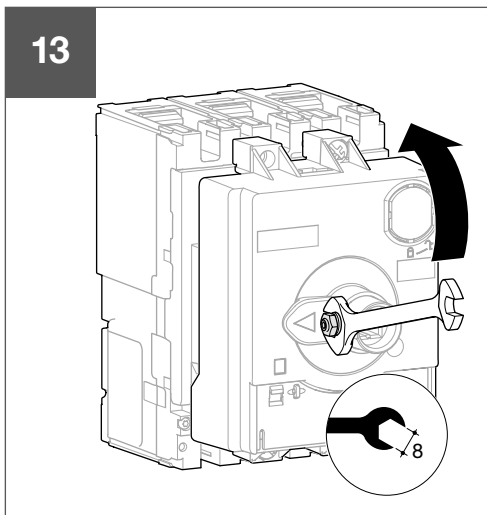
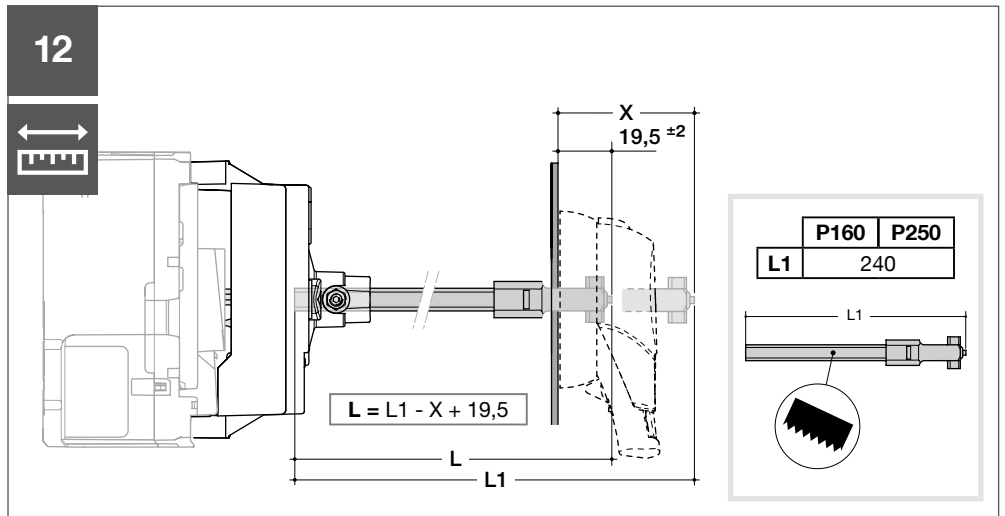
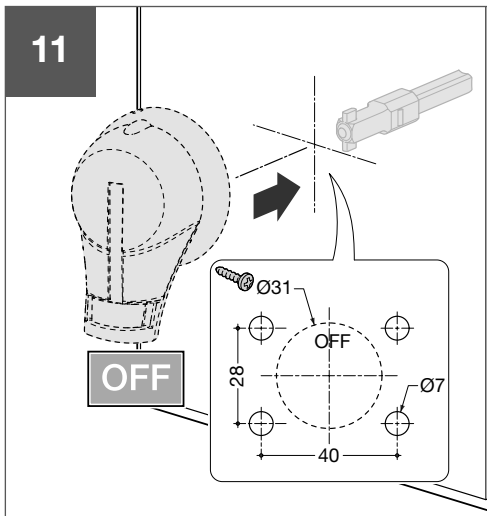
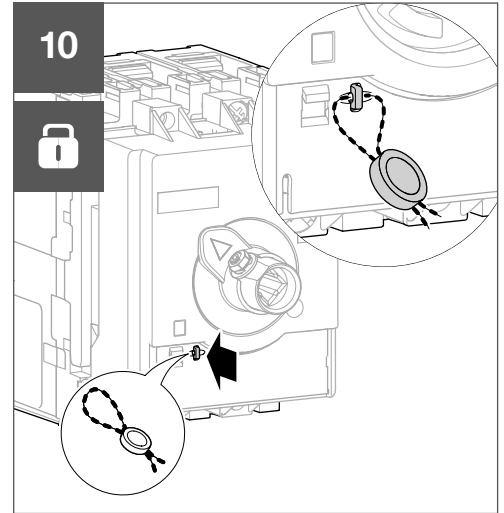
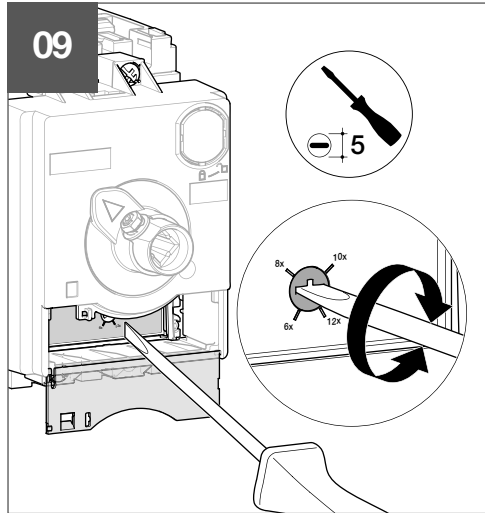
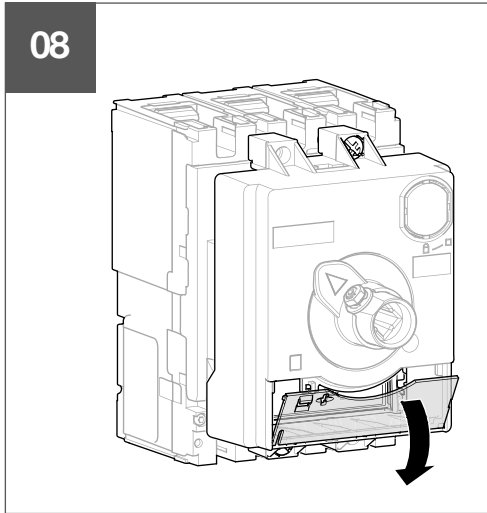
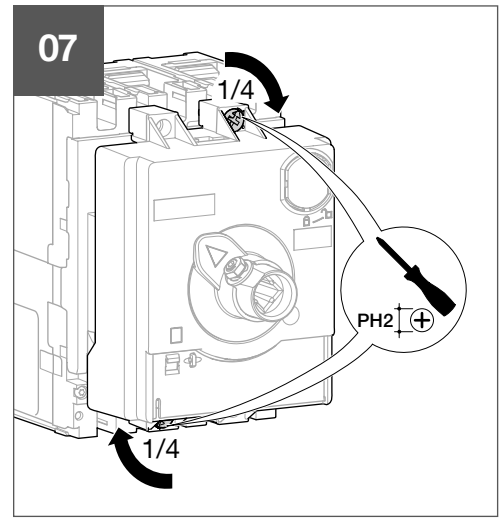
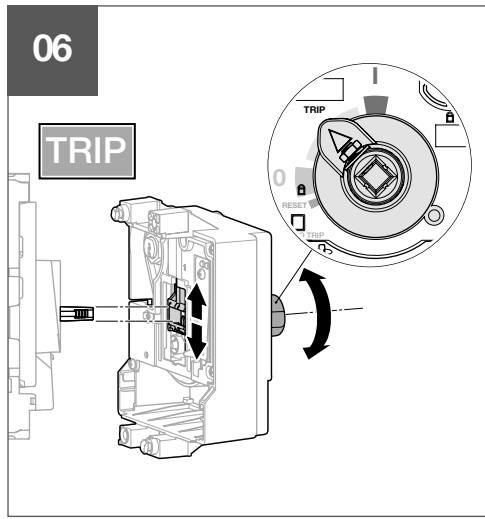
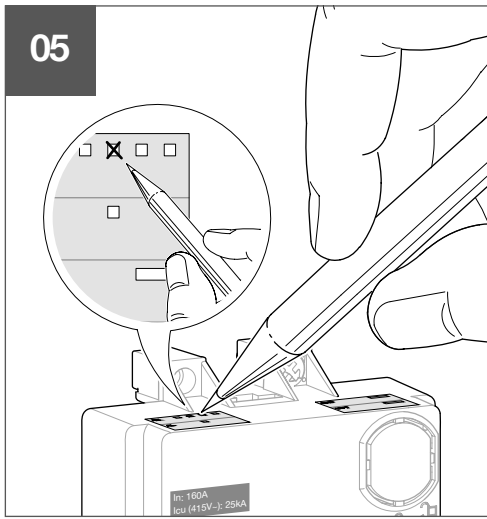


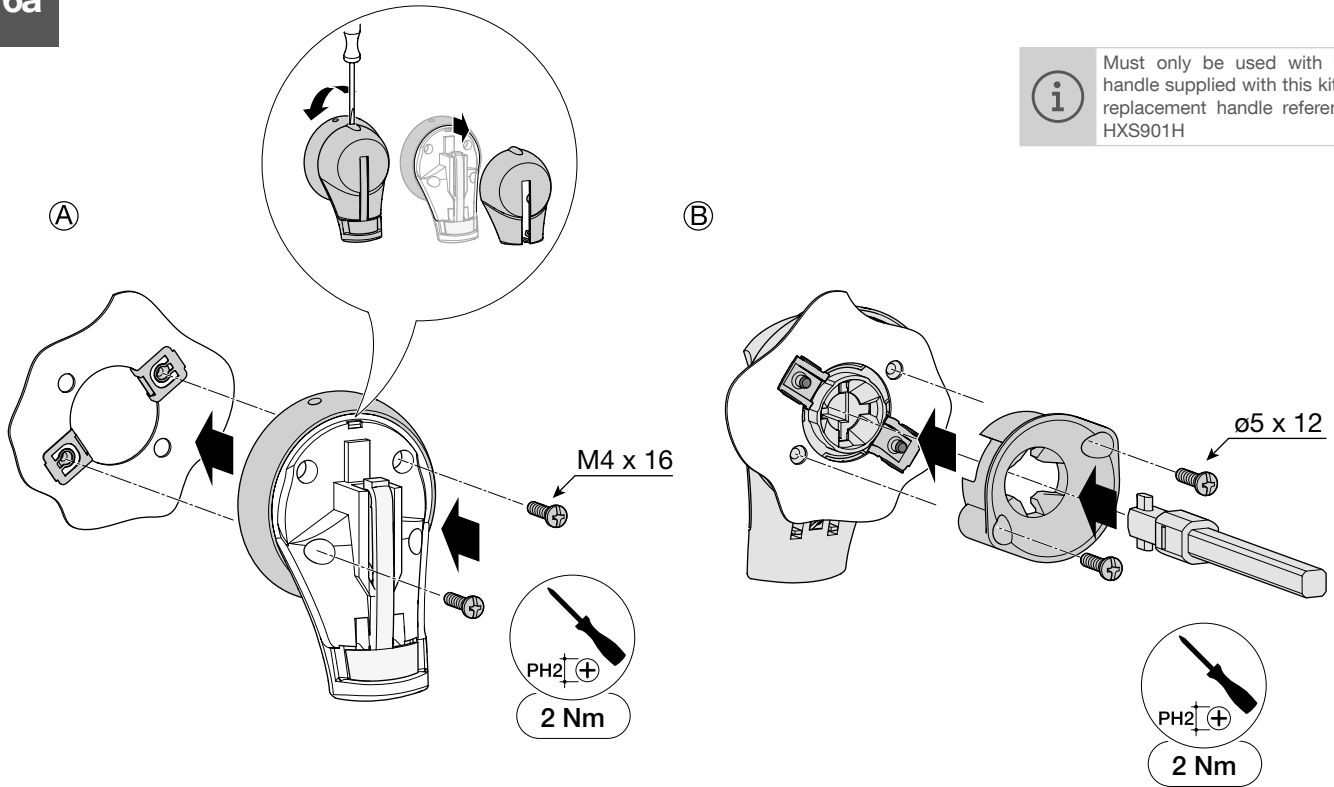
P160 HXS031H P250 HXT031H



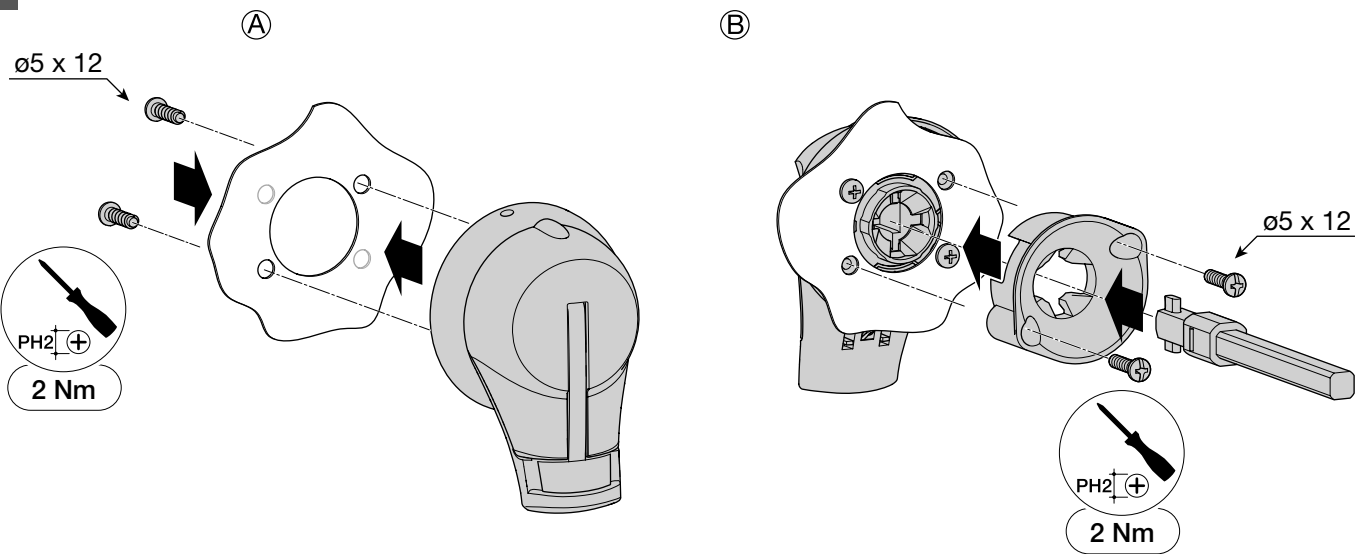


16a

i Must only be used with the handle supplied with this kit or replacement handle reference HXS901H



16b

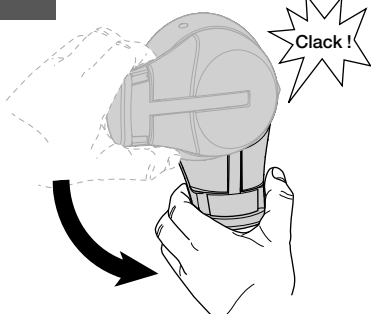


17



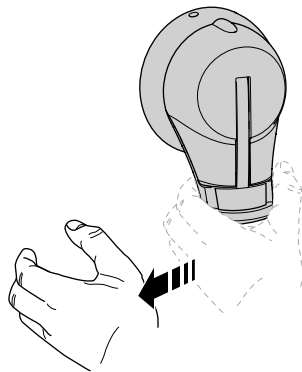
ON → OFF

Clack!



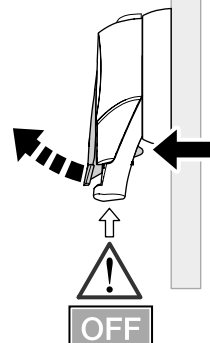
18

OFF

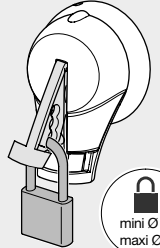


19

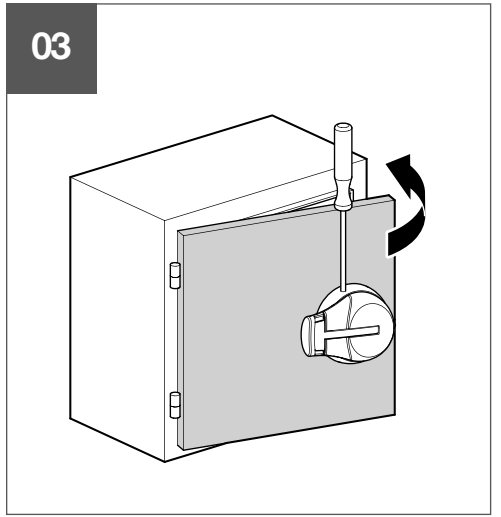
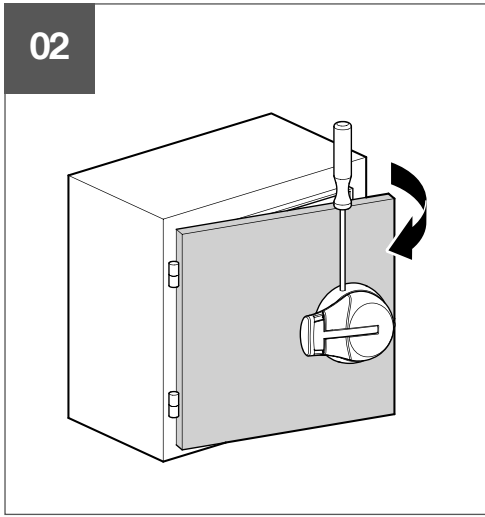
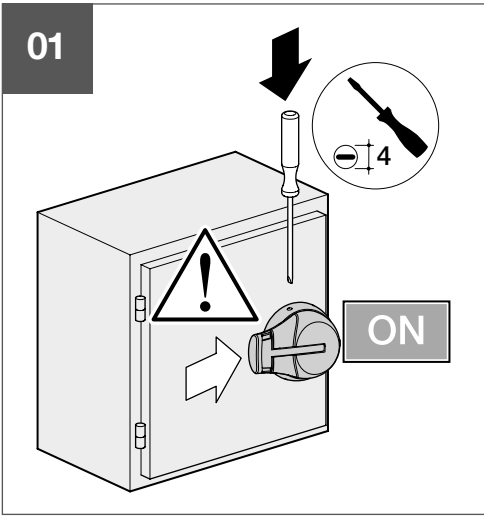
OFF



20



mini Ø 5
maxi Ø 8



|⚡|

P160	P250
HYS050H (3P)	HYT050H (3P)
HYS051H (4P)	HYT051H (4P)

P160	P250
HYS021H (3P)	HYT021H (3P)
HYS022H (4P)	HYT022H (4P)

P160	P250
HYS025H (3P)	HYT025H (3P)
HYS026H (4P)	HYT026H (4P)

P160	P250
HYS052H (3P)	HYT052H (3P)
HYS053H (4P)	HYT053H (4P)

P160	P250
HYS023H (3P)	HYT023H (3P)
HYS024H (4P)	HYT024H (4P)

