



Test Report issued under the responsibility of:



<b>TEST REPORT IEC 60884-1 Plugs and socket-outlets for household and similar purposes Part 1: General requirements</b>	
<b>Report Number.....</b>	<b>632304.01</b>
<b>Date of issue.....</b>	<b>26/10/2021</b>
<b>Total number of pages .....</b>	<b>65 + 6 pages in Appendix</b>
<b>Name of Testing Laboratory preparing the Report .....</b>	<b>AB Plast s.r.l</b>
<b>Applicant's name .....</b>	<b>AB Plast s.r.l</b>
<b>Address.....</b>	<b>Via Fura, 38 25125 Brescia (BS) Italy</b>
<b>Test specification:</b>	
<b>Standard .....</b>	<b>IEC 60884-1:2002, AMD1:2006, AMD2:2013</b>
<b>Test procedure .....</b>	<b>CB Scheme</b>
<b>Non-standard test method .....</b>	<b>N/A</b>
<b>Test Report Form No. ....</b>	<b>IEC60884_1G</b>
<b>Test Report Form(s) Originator ....</b>	<b>IMQ S.p.A.</b>
<b>Master TRF .....</b>	<b>Dated 2019-05-07</b>
<b>Copyright © 2019 IEC System of Conformity Assessment Schemes for Electrotechnical Equipment and Components (IECEE System). All rights reserved.</b>	
<small>This publication may be reproduced in whole or in part for non-commercial purposes as long as the IECEE is acknowledged as copyright owner and source of the material. IECEE takes no responsibility for and will not assume liability for damages resulting from the reader's interpretation of the reproduced material due to its placement and context.</small>	
<small>If this Test Report Form is used by non-IECEE members, the IECEE/IEC logo and the reference to the CB Scheme procedure shall be removed.</small>	
<b>This report is not valid as a CB Test Report unless signed by an approved CB Testing Laboratory and appended to a CB Test Certificate issued by an NCB in accordance with IECEE 02.</b>	

**SGS Belgium NV**  
**Division SGS CEBEC**  
**Business Riverside Park**  
**Boulevard Internationalelaan, 55**  
**B-1070 Brussel-Belgium**  
[Cebec.info@sgs.com](mailto:Cebec.info@sgs.com)  
[www.cebec.sgs.com](http://www.cebec.sgs.com)  
**T 0032 2 556 00 38**

**General disclaimer:**




This document is issued by the company under its General Conditions of Service accessible at [http://www.sgs.com/terms\\_and\\_conditions.htm](http://www.sgs.com/terms_and_conditions.htm). Attention is drawn to the limitation of liability, indemnification and jurisdiction issues defined therein. Any holder of this document is advised that information contained hereon reflects the Company's findings at the time of its intervention only and within the limits of Client's instructions, if any. The Company's sole responsibility is to its Client and this document does not exonerate parties to a transaction from exercising all their rights and obligations under the transaction documents. Any unauthorized alteration, forgery or falsification of the content or appearance of this document is unlawful and offenders may be prosecuted to the fullest extent of the law.

Unless otherwise stated, the results shown in this document refer only to the sample(s) tested. This document cannot be reproduced except in full, without prior approval of the company.

The test results presented in this report relate only to the object tested.

This report shall not be reproduced, except in full, without the written approval of the Issuing testing laboratory.

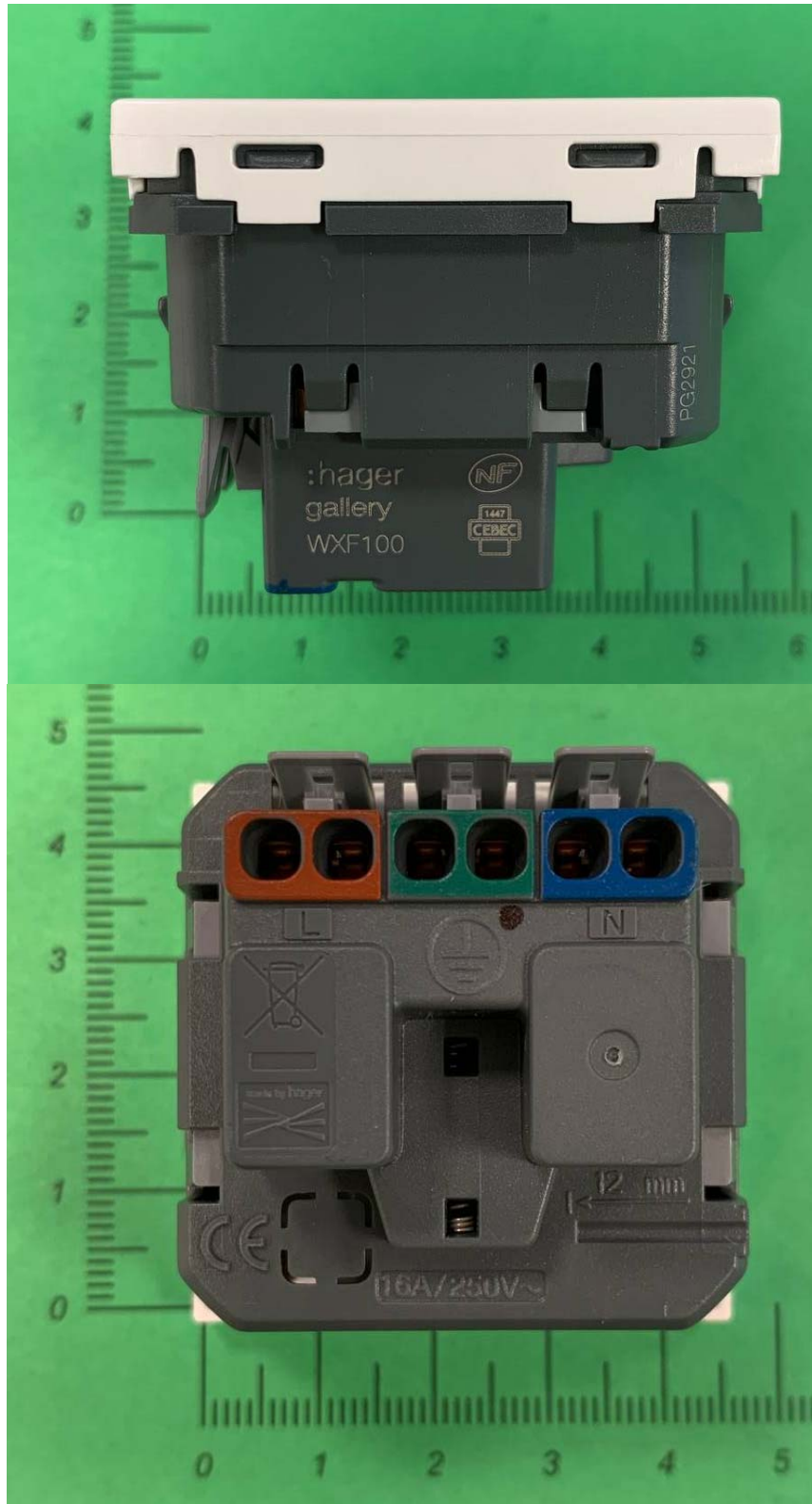
The authenticity of this Test Report and its contents can be verified by contacting the NCB, responsible for this Test Report.

<b>Test item description</b> ..... :	Gallery French sockets	
<b>Trade Mark</b> ..... :	HAGER	
<b>Manufacturer</b> .....	AB Plast s.r.l	
<b>Model/Type reference</b> .....	Gallery French sockets / see general products information	
<b>Ratings</b> .....	250 V~ 16 A	
<b>Responsible Testing Laboratory (as applicable), testing procedure and testing location(s):</b>		
<input type="checkbox"/>	<b>CB Testing Laboratory:</b>	
<b>Testing location/ address</b> ..... :		
<b>Tested by (name, function, signature)</b> ..... :		
<b>Approved by (name, function, signature)</b> ... :		
<input type="checkbox"/>	<b>Testing procedure: CTF Stage 1:</b>	
<b>Testing location/ address</b> ..... :		
<b>Tested by (name, function, signature)</b> ..... :		
<b>Approved by (name, function, signature)</b> ... :		
<input checked="" type="checkbox"/>	<b>Testing procedure: CTF Stage 2:</b>	
<b>Testing location/ address</b> ..... :		Via Fura, 38 25125 Brescia (BS) Italy
<b>Tested by (name + signature)</b> .....		Andrea Zambelli 
<b>Witnessed by (name, function, signature) . :</b>		Luigi Zanutto 
<b>Approved by (name, function, signature)</b> ... :		Silvio Piras 
<input type="checkbox"/>	<b>Testing procedure: CTF Stage 3:</b>	
<input type="checkbox"/>	<b>Testing procedure: CTF Stage 4:</b>	
<b>Testing location/ address</b> ..... :		
<b>Tested by (name, function, signature)</b> ..... :		
<b>Witnessed by (name, function, signature) . :</b>		

<b>List of Attachments (including a total number of pages in each attachment):</b> Annex A – 6 pages	
<b>Summary of testing:</b>	
<p><b>Tests performed (name of test and test clause):</b> All test were performed on the models WXF100</p> <p>Specimen numbers: 21-0708, 21-0709, 21-0710, 21-0711, 21-0712, 21-0713, 21-0714, 21-0742, 21-0743, 21-0744, 21-0745, 21-0746, 21-0747, 21-0748, 21-0749, 21-0918, 21-0920, 21-0921, 21-0922, 21-0923, 21-0924, 21-0925, 21-0926.</p> <p>Test carried out on WXF100 cover: WXF102</p> <p>The test configuration includes frame WXA450, sockets WXF100 with WXD100D and plate WXP002</p>	<p><b>Testing location:</b> <b>AB Plast s.r.l – Hager Group</b> Via Fura, 38 25125 Brescia (BS) Italy</p>
<p><b>Summary of compliance with National Differences (List of countries addressed):</b> French and Belgian standard have been checked: see Annex A at the end of this report Belgian standard: NBN C 61-112-1:2017 French standard: NF C 61-314:2017</p> <p><input checked="" type="checkbox"/> <b>The product fulfils the requirements of <u>NBN C 61-112-1:2017; NF C 61-314:2017</u></b></p>	

**Copy of marking plate:**

The use of certification marks on a product must be authorized by the respective NCBs that owns these marks.



<b>Test item particulars.....:</b>	
<b>Standard Sheet .....</b>	I and IIIA of NF C 61-314; V and I of NBN C 61-112-1
<b>Rated current (A) / Rated voltage (V) .....</b>	16 / 250
<b>Degree of protection against access to hazardous parts and against harmful ingress of solid foreign objects .....</b>	IP2X
<b>Degree of protection against harmful ingress of water .....</b>	IPX0
<b>Provision for earthing .....</b>	With and without earthing contact (see General product information)
<b>Method of connecting the cable .....</b>	rewirable
<b>Type of cable .....</b>	N/A
<b>Nominal cross-sectional areas (mm<sup>2</sup>) .....</b>	2,5
<b>Type of terminals .....</b>	screwless (rigid and flexible)
<b>Type of connections .....</b>	N/A
<b>Socket-outlets:</b>	
<b>Degree of protection against electric shock :</b>	normal protection
<b>Existence of shutters .....</b>	with shutters
<b>Method of application / mounting of the socket-outlet .....</b>	flush-type, surface-type and trunking application
<b>Method of installation .....</b>	design A
<b>Intended for circuits where .....</b>	a single earthing circuit provides protective earthing
<b>Plugs:</b>	
<b>Class of equipment .....</b>	0 / I / II
<b>Possible test case verdicts:</b>	
<b>- test case does not apply to the test object.....</b>	N/A
<b>- test object does meet the requirement.....</b>	P (Pass)
<b>- test object does not meet the requirement.....</b>	F (Fail)
<b>Testing.....:</b>	
<b>Date of receipt of test item .....</b>	August 2021
<b>Date (s) of performance of tests .....</b>	October 2021
<b>General remarks:</b>	
"(See Enclosure #)" refers to additional information appended to the report. "(See appended table)" refers to a table appended to the report.	
Throughout this report a <input checked="" type="checkbox"/> comma / <input type="checkbox"/> point is used as the decimal separator.	

<b>Manufacturer's Declaration per sub-clause 4.2.5 of IECEE 02:</b>	
The application for obtaining a CB Test Certificate includes more than one factory location and a declaration from the Manufacturer stating that the sample(s) submitted for evaluation is (are) representative of the products from each factory has been provided .....	<input checked="" type="checkbox"/> <b>Yes</b> <input type="checkbox"/> <b>Not applicable</b>
<b>When differences exist; they shall be identified in the General product information section.</b>	
<b>Name and address of factory (ies) .....</b> : Berker Polska SP.Z.OO ul. Sredzka 19 62-035 Kornik – Poland  BERKER GmbH & Co.KG. Hubertusstrasse 17 57482 Wenden (Ottfingen) - Germany	

**General product information and other remarks:****Socket engine**

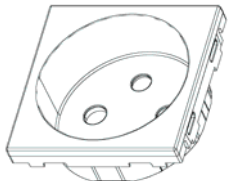
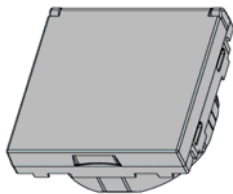
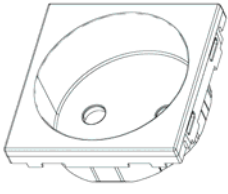

Commercial code	Description	Rated current (A)	Rated Voltage (V)	Freq. (Hz)	Type of terminal	IP
WXF100	French socket 2P+T screwless	16A	250V	50	Screwless	IP20
WXF102	French socket 2P screwless	16A	250V	50	Screwless	IP20

**Frame references**

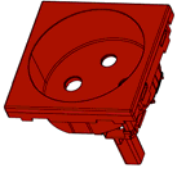
Product Code	Description
WXA450	EVO 2 modules frame
WXA450G	EVO 2 modules frame with claws
WXA451	EVO 1 module frame
WXA454	EVO 4 modules frame French 57mm
WXA455	EVO 5 modules frame French 71mm
WXA456	EVO 6 modules frame French 57mm
WXA458	EVO 8 modules frame French 71mm
WXA460	EVO 2 modules frame for competitors

The following references are used to complete the installation of the products and approval is not required:

**Mirror part**

Commercial code	Description	Picture
WXD100B	French socket 2P+T Rocker COOL WHITE	
WXD100D	French socket 2P+T Rocker DUNE	
WXD100E	French socket 2P+T Rocker ORANGE	
WXD100N	French socket 2P+T Rocker Mistral	
WXD100R	French socket 2P+T Rocker RED	
WXD100T	French socket 2P+T Rocker TITANE	
WXD100V	French socket 2P+T Rocker GREEN	
WXD101B	French socket 2P+T with LID Rocker COOL WHITE	
WXD101D	French socket 2P+T with LID Rocker DUNE	
WXD101N	French socket 2P+T with LID Rocker Mistral	
WXD101T	French socket 2P+T with LID Rocker TITANE	
WXD102B	French socket 2P Rocker COOL WHITE	
WXD102D	French socket 2P Rocker DUNE	
WXD102N	French socket 2P Rocker Mistral	
WXD102T	French socket 2P Rocker TITANE	
WXD103B	French socket 2P+T with light Rocker COOL WHITE	
WXD103D	French socket 2P+T with light Rocker DUNE	



WXD103N	French socket 2P+T with light Rocker Mistral	
WXD103T	French socket 2P+T with light Rocker TITANE	
WXD104R	French socket 2P+T DETROMPAGE Rocker RED	

### Surface Box

Product Code	English description
WXA681xx	Wall Box Design PROFILE single
WXA682xx	Wall Box Design PROFILE double
WXA683xx	Wall Box Design PROFILE triple
WXA686xx	Wall Box Design PROFILE 16mod

### Trunking references

Plastic	Metal
GBD500500	GBA500501
GBD500850	GBA500851
GBD501000	GBA501311
GBD501310	GBA501611
GBD501600	
GBD501610	
GBD501900	

### Plate references

Product Code	Description
WXP2002	EVO Profile - material Layer - ALU -1P
WXP2012	EVO Profile - material Layer - ALU - 2P HORIZ 71
WXP2022	EVO Profile - material Layer - ALU - 2P VERT 57
WXP2042	EVO Profile - material Layer - ALU - 2P VERT 71
WXP2013	EVO Profile - material Layer - ALU - 3P HORIZ 71
WXP2043	EVO Profile - material Layer - ALU - 3P VERT 71
WXP2034	EVO Profile - material Layer - ALU - 4M EN 57
WXP2004	EVO Profile - material Layer - ALU - 4M ENT 71
WXP2014	EVO Profile - material Layer - ALU - 4P HORIZ 71
WXP2005	EVO Profile - material Layer - ALU - 5M ENT 71
WXP2006	EVO Profile - material Layer - ALU - 6M ENT 57
WXP2008	EVO Profile - material Layer - ALU - 8M ENT 71
WXP2102	EVO Profile - material Layer - INOX - 1P
WXP2112	EVO Profile - material Layer - INOX - 2P HORIZ 71
WXP2122	EVO Profile - material Layer - INOX - 2P VERT 57
WXP2142	EVO Profile - material Layer - INOX - 2P VERT 71
WXP2113	EVO Profile - material Layer - INOX - 3P HORIZ 71
WXP2143	EVO Profile - material Layer - INOX - 3P VERT 71
WXP2134	EVO Profile - material Layer - INOX - 4M ENT 57
WXP2104	EVO Profile - material Layer - INOX - 4M ENT 71
WXP2114	EVO Profile - material Layer - INOX - 4P HORIZ 71
WXP2105	EVO profile - material Layer - INOX - 5M ENT 71
WXP2106	EVO Profile - material Layer - INOX - 6M ENT 57
WXP2108	EVO Profile - material Layer - INOX - 8M ENT 71
WXP2402	EVO Profile - material Layer - LIGHT OAK - 1P
WXP2412	EVO Profile - material Layer - LIGHT OAK - 2P HORIZ 71
WXP2422	EVO Profile - material Layer - LIGHT OAK - 2P VERT 57

WXP2442	EVO Profile - material Layer - LIGHT OAK - 2P VERT 71
WXP2413	EVO Profile - material Layer - LIGHT OAK - 3P HORIZ 71
WXP2443	EVO Profile - material Layer - LIGHT OAK - 3P VERT 71
WXP2434	EVO Profile - material Layer - LIGHT OAK - 4M ENT 57
WXP2404	EVO Profile - material Layer - LIGHT OAK - 4M ENT 71
WXP2414	EVO Profile - material Layer - LIGHT OAK - 4P HORIZ 71
WXP2405	EVO profile - material Layer - LIGHT OAK - 5M ENT 71
WXP2406	EVO Profile - material Layer - LIGHT OAK - 6M ENT 57
WXP2408	EVO Profile - material Layer - LIGHT OAK - 8M ENT 71
WXP2502	EVO Profile - material Layer - BROWN OAK - 1P
WXP2512	EVO Profile - material Layer - BROWN OAK - 2P HORIZ 71
WXP2522	EVO Profile - material Layer - BROWN OAK - 2P VERT 57
WXP2542	EVO Profile - material Layer - BROWN OAK - 2P VERT 71
WXP2513	EVO Profile - material Layer - BROWN OAK - 3P HORIZ 71
WXP2543	EVO Profile - material Layer - BROWN OAK - 3P VERT 71
WXP2534	EVO Profile - material Layer - BROWN OAK - 4M ENT 57
WXP2504	EVO Profile - material Layer - BROWN OAK - 4M ENT 71
WXP2514	EVO Profile - material Layer - BROWN OAK - 4P HORIZ 71
WXP2505	EVO profile - material Layer - BROWN OAK - 5M ENT 71
WXP2506	EVO Profile - material Layer - BROWN OAK - 6M ENT 57
WXP2508	EVO Profile - material Layer - BROWN OAK - 8M ENT 71
WXP2202	EVO Profile - material Layer - BRONZE - 1P
WXP2212	EVO Profile - material Layer - BRONZE - 2P HORIZ 71
WXP2222	EVO Profile - material Layer - BRONZE - 2P VERT 57
WXP2242	EVO Profile - material Layer - BRONZE - 2P VERT 71
WXP2213	EVO Profile - material Layer - BRONZE - 3P HORIZ 71
WXP2243	EVO Profile - material Layer - BRONZE - 3P VERT 71
WXP2234	EVO Profile - material Layer - BRONZE - 4M ENT 57
WXP2204	EVO Profile - material Layer - BRONZE - 4M ENT 71
WXP2214	EVO Profile - material Layer - BRONZE - 4P HORIZ 71
WXP2205	EVO Profile - material Layer - BRONZE - 5M ENT 71
WXP2206	EVO Profile - material Layer - BRONZE - 6M ENT 57
WXP2208	EVO Profile - material Layer - BRONZE - 8M ENT 71
WXP4502	EVO Profile - material massive - BRASS - 1P METAL
WXP4512	EVO Profile - material massive - BRASS - 2P HORIZ 71 METAL
WXP4522	EVO Profile - material massive - BRASS - 2P VERT 57 METAL
WXP4542	EVO Profile - material massive - BRASS - 2P VERT 71 METAL
WXP4513	EVO Profile - material massive - BRASS - 3P HORIZ 71 METAL
WXP4543	EVO Profile - material massive - BRASS - 3P VERT 71 METAL
WXP4534	EVO Profile - material massive - BRASS - 4M ENT 57 METAL
WXP4504	EVO Profile - material massive - BRASS - 4M ENT 71 METAL
WXP4514	EVO Profile - material massive - BRASS - 4P HORIZ 71
WXP4505	EVO Profile - material massive - BRASS - 5M ENT 71 METAL
WXP4506	EVO Profile - material massive - BRASS - 6M ENT 57 METAL
WXP4508	EVO Profile - material massive - BRASS - 8M ENT 71 METAL
WXP4602	EVO Profile - material massive - COPPER - 1P
WXP4612	EVO Profile - material massive - COPPER - 2P HORIZ 71
WXP4622	EVO Profile - material massive - COPPER - 2P VERT 57
WXP4642	EVO Profile - material massive - COPPER - 2P VERT 71
WXP4613	EVO Profile - material massive - COPPER - 3P HORIZ 71
WXP4643	EVO Profile - material massive - COPPER - 3P VERT 71
WXP4634	EVO Profile - material massive - COPPER - 4M ENT 57
WXP4604	EVO Profile - material massive - COPPER - 4M ENT 71
WXP4614	EVO Profile - material massive - COPPER - 4P HORIZ 71
WXP4605	EVO Profile - material massive - COPPER - 5M ENT 71
WXP4606	EVO Profile - material massive - COPPER - 6M ENT 57
WXP4608	EVO Profile - material massive - COPPER - 8M ENT 71
WXP4102	EVO PROFILE - MATERIAL MASSIVE - BLACK GLASS - 1P
WXP4112	EVO PROFILE - MATERIAL MASSIVE - BLACK GLASS - 2P HORIZ 71
WXP4122	EVO PROFILE - MATERIAL MASSIVE - BLACK GLASS - 2P VERT 57
WXP4142	EVO PROFILE - MATERIAL MASSIVE - BLACK GLASS - 2P VERT 71
WXP4113	EVO PROFILE - MATERIAL MASSIVE - BLACK GLASS - 3P HORIZ 71
WXP4143	EVO PROFILE - MATERIAL MASSIVE - BLACK GLASS - 3P VERT 71
WXP4134	EVO PROFILE - MATERIAL MASSIVE - BLACK GLASS - 4M ENT 57
WXP4104	EVO PROFILE - MATERIAL MASSIVE - BLACK GLASS - 4M ENT 71
WXP4114	EVO PROFILE - MATERIAL MASSIVE - BLACK GLASS - 4P HORIZ 71

WXP4105	EVO PROFILE - MATERIAL MASSIVE - BLACK GLASS - 5M ENT 71
WXP4106	EVO PROFILE - MATERIAL MASSIVE - BLACK GLASS - 6M ENT 57
WXP4108	EVO PROFILE - MATERIAL MASSIVE - BLACK GLASS - 8M ENT71
WXP5002	Profile - massive - TINTED MIRROR - 1P
WXP5012	Profile - massive - TINTED MIRROR - 2P H71
WXP5022	Profile - massive - TINTED MIRROR - 2P V57
WXP5042	Profile - massive - TINTED MIRROR - 2P V71
WXP5013	Profile - massive - TINTED MIRROR - 3P H71
WXP5043	Profile - massive - TINTED MIRROR - 3P V71
WXP5034	Profile - massive - TINTED MIRROR - 4M 57
WXP5004	Profile - massive - TINTED MIRROR - 4M 71
WXP5014	Profile - massive - TINTED MIRROR - 4P H71
WXP5005	Profile - massive - TINTED MIRROR - 5M 71
WXP5006	Profile - massive - TINTED MIRROR - 6M 57
WXP5008	Profile - massive - TINTED MIRROR - 8M 71
WXP4002	EVO Profile - material massive - WHITE GLASS - 1P
WXP4012	EVO Profile - material massive - WHITE GLASS - 2P HORIZ 71
WXP4022	EVO Profile - material massive - WHITE GLASS - 2P VERT 57
WXP4042	EVO Profile - material massive - WHITE GLASS - 2P VERT 71
WXP4013	EVO Profile - material massive - WHITE GLASS - 3P HORIZ 71
WXP4043	EVO Profile - material massive - WHITE GLASS - 3P VERT 71
WXP4034	EVO Profile - material massive - WHITE GLASS - 4M ENT 57
WXP4004	EVO Profile - material massive - WHITE GLASS - 4M ENT 71
WXP4014	EVO Profile - material massive - WHITE GLASS - 4P HORIZ 71
WXP4005	EVO Profile - material massive - WHITE GLASS - 5M ENT 71
WXP4006	EVO Profile - material massive - WHITE GLASS - 6M ENT 57
WXP4008	EVO Profile - material massive - WHITE GLASS - 8M ENT 71
WXP5102	EVO PROFILE - MATERIAL MASSIVE - BEIGE LEATHER - 1P
WXP5112	EVO PROFILE - MATERIAL MASSIVE - BEIGE LEATHER - 2P HORIZ 71
WXP5122	EVO PROFILE - MATERIAL MASSIVE - BEIGE LEATHER - 2P VERT 57
WXP5142	EVO PROFILE - MATERIAL MASSIVE - BEIGE LEATHER - 2P VERT 71
WXP5113	EVO PROFILE - MATERIAL MASSIVE - BEIGE LEATHER - 3P HORIZ 71
WXP5143	EVO PROFILE - MATERIAL MASSIVE - BEIGE LEATHER - 3P VERT 71
WXP5134	EVO PROFILE - MATERIAL MASSIVE - BEIGE LEATHER - 4M ENT 57
WXP5104	EVO PROFILE - MATERIAL MASSIVE - BEIGE LEATHER - 4M ENT 71
WXP5114	EVO PROFILE - MATERIAL MASSIVE - BEIGE LEATHER - 4P HORIZ 71
WXP5105	EVO PROFILE - MATERIAL MASSIVE - BEIGE LEATHER - 5M ENT 71
WXP5106	EVO PROFILE - MATERIAL MASSIVE - BEIGE LEATHER - 6M ENT 57
WXP5108	EVO PROFILE - MATERIAL MASSIVE - BEIGE LEATHER - 8M ENT 71
WXP4902	EVO PROFILE - MATERIAL MASSIVE - BROWN LEATHER - 1P
WXP4912	EVO PROFILE - MATERIAL MASSIVE - BROWN LEATHER - 2P HORIZ 71
WXP4922	EVO PROFILE - MATERIAL MASSIVE - BROWN LEATHER - 2P VERT 57
WXP4942	EVO PROFILE - MATERIAL MASSIVE - BROWN LEATHER - 2P VERT 71
WXP4913	EVO PROFILE - MATERIAL MASSIVE - BROWN LEATHER - 3P HORIZ 71
WXP4943	EVO PROFILE - MATERIAL MASSIVE - BROWN LEATHER - 3P VERT 71
WXP4934	EVO PROFILE - MATERIAL MASSIVE - BROWN LEATHER - 4M ENT 57
WXP4904	EVO PROFILE - MATERIAL MASSIVE - BROWN LEATHER - 4M ENT 71
WXP4914	EVO PROFILE - MATERIAL MASSIVE - BROWN LEATHER - 4P HORIZ 71
WXP4905	EVO PROFILE - MATERIAL MASSIVE - BROWN LEATHER - 5M ENT 71
WXP4906	EVO PROFILE - MATERIAL MASSIVE - BROWN LEATHER - 6M ENT 57
WXP4908	EVO PROFILE - MATERIAL MASSIVE - BROWN LEATHER - 8M ENT 71
WXP4302	EVO Profile - material massive - NATURAL ALU 1P METAL
WXP4312	EVO Profile - material massive - NATURAL ALU 2P HORIZ 71 METAL
WXP4322	EVO Profile - material massive - NATURAL ALU 2P VERT 57 METAL
WXP4342	EVO Profile - material massive - NATURAL ALU 2P VERT 71 METAL
WXP4313	EVO Profile - material massive - NATURAL ALU 3P HORIZ 71 METAL
WXP4343	EVO Profile - material massive - NATURAL ALU 3P VERT 71 METAL
WXP4334	EVO Profile - material massive - NATURAL ALU 4M ENT 57 METAL
WXP4304	EVO Profile - material massive - NATURAL ALU 4M ENT 71 METAL
WXP4314	EVO Profile - material massive - NATURAL ALU 4P HORIZ 71 METAL
WXP4305	EVO Profile - material massive - NATURAL ALU 5M ENT 71 METAL
WXP4306	EVO Profile - material massive - NATURAL ALU 6M ENT 57 METAL
WXP4308	EVO Profile - material massive - NATURAL ALU 8M ENT 71 METAL
WXP4402	EVO PROFILE - MATERIAL MASSIVE - SLATE - 1P
WXP4412	EVO PROFILE - MATERIAL MASSIVE - SLATE - 2P HORIZ 71
WXP4422	EVO PROFILE - MATERIAL MASSIVE - SLATE - 2P VERT 57

WXP4442	EVO PROFILE - MATERIAL MASSIVE - SLATE - 2P VERT 71
WXP4413	EVO PROFILE - MATERIAL MASSIVE - SLATE - 3P HORIZ 71
WXP4443	EVO PROFILE - MATERIAL MASSIVE - SLATE - 3P VERT 71
WXP4434	EVO PROFILE - MATERIAL MASSIVE - SLATE - 4M ENT 57
WXP4404	EVO PROFILE - MATERIAL MASSIVE - SLATE - 4M ENT 71
WXP4414	EVO PROFILE - MATERIAL MASSIVE - SLATE - 4P HORIZ 71
WXP4405	EVO PROFILE - MATERIAL MASSIVE - SLATE - 5M ENT 71
WXP4406	EVO PROFILE - MATERIAL MASSIVE - SLATE - 6M ENT 57
WXP4408	EVO PROFILE - MATERIAL MASSIVE - SLATE - 8M ENT 71
WXP4202	EVO PROFILE - MATERIAL MASSIVE - STAINLESS STEEL - 1P METAL
WXP4212	EVO PROFILE - MATERIAL MASSIVE - STAINLESS STEEL - 2P HORIZ 71 METAL
WXP4222	EVO PROFILE - MATERIAL MASSIVE - STAINLESS STEEL - 2P VERT 57 METAL
WXP4242	EVO PROFILE - MATERIAL MASSIVE - STAINLESS STEEL - 2P VERT 71 METAL
WXP4213	EVO PROFILE - MATERIAL MASSIVE - STAINLESS STEEL - 3P HORIZ 71 METAL
WXP4243	EVO PROFILE - MATERIAL MASSIVE - STAINLESS STEEL - 3P VERT 71 METAL
WXP4234	EVO PROFILE - MATERIAL MASSIVE - STAINLESS STEEL - 4M ENT 57 METAL
WXP4204	EVO PROFILE - MATERIAL MASSIVE - STAINLESS STEEL - 4M ENT 71 METAL
WXP4214	EVO PROFILE - MATERIAL MASSIVE - STAINLESS STEEL - 4P HORIZ 71 METAL
WXP4205	EVO PROFILE - MATERIAL MASSIVE - STAINLESS STEEL - 5M ENT 71 METAL
WXP4206	EVO PROFILE - MATERIAL MASSIVE - STAINLESS STEEL - 6M ENT 57 METAL
WXP4208	EVO PROFILE - MATERIAL MASSIVE - STAINLESS STEEL - 8M ENT 71 METAL
WXP4702	EVO PROFILE - MATERIAL MASSIVE - NATURAL OAK - 1P
WXP4712	EVO PROFILE - MATERIAL MASSIVE - NATURAL OAK - 2P HORIZ 71
WXP4722	EVO PROFILE - MATERIAL MASSIVE - NATURAL OAK - 2P VERT 57
WXP4742	EVO PROFILE - MATERIAL MASSIVE - NATURAL OAK - 2P VERT 71
WXP4713	EVO PROFILE - MATERIAL MASSIVE - NATURAL OAK - 3P HORIZ 71
WXP4743	EVO PROFILE - MATERIAL MASSIVE - NATURAL OAK - 3P VERT 71
WXP4734	EVO PROFILE - MATERIAL MASSIVE - NATURAL OAK - 4M ENT 57
WXP4704	EVO PROFILE - MATERIAL MASSIVE - NATURAL OAK - 4M ENT 71
WXP4714	EVO PROFILE - MATERIAL MASSIVE - NATURAL OAK - 4P HORIZ 71
WXP4705	EVO PROFILE - MATERIAL MASSIVE - NATURAL OAK - 5M ENT 71
WXP4706	EVO PROFILE - MATERIAL MASSIVE - NATURAL OAK - 6M ENT 57
WXP4708	EVO PROFILE - MATERIAL MASSIVE - NATURAL OAK - 8M ENT 71
WXP4802	EVO PROFILE - MATERIAL MASSIVE - EPICEA - 1P
WXP4812	EVO PROFILE - MATERIAL MASSIVE - EPICEA - 2P HORIZ 71
WXP4822	EVO PROFILE - MATERIAL MASSIVE - EPICEA - 2P VERT 57
WXP4842	EVO PROFILE - MATERIAL MASSIVE - EPICEA - 2P VERT 71
WXP4813	EVO PROFILE - MATERIAL MASSIVE - EPICEA - 3P HORIZ 71
WXP4843	EVO PROFILE - MATERIAL MASSIVE - EPICEA - 3P VERT 71
WXP4834	EVO PROFILE - MATERIAL MASSIVE - EPICEA - 4M ENT 57
WXP4804	EVO PROFILE - MATERIAL MASSIVE - EPICEA - 4M ENT 71
WXP4814	EVO PROFILE - MATERIAL MASSIVE - EPICEA - 4P HORIZ 71
WXP4805	EVO PROFILE - MATERIAL MASSIVE - EPICEA - 5M ENT 71
WXP4806	EVO PROFILE - MATERIAL MASSIVE - EPICEA - 6M ENT 57
WXP4808	EVO PROFILE - MATERIAL MASSIVE - EPICEA - 8M ENT 71
WXP0001	EVO Profile - plastic injected 1K - PLASTIC INJECTED COOL WHITE - 1M
WXP0086	EVO Profile - plastic injected 1K - PLASTIC INJECTED COOL WHITE - 2x3x2M
WXP0096	EVO Profile - plastic injected 1K - PLASTIC INJECTED COOL WHITE - 8M+8M
WXP0002	EVO Profile - plastic injected 2k - PLASTIC INJECTED COOL WHITE - 1P
WXP0012	EVO Profile - plastic injected 2k - PLASTIC INJECTED COOL WHITE - 2P HORIZ 71
WXP0022	EVO Profile - plastic injected 2k - PLASTIC INJECTED COOL WHITE - 2P VERT 57
WXP0042	EVO Profile - plastic injected 2k - PLASTIC INJECTED COOL WHITE - 2P VERT 71
WXP0013	EVO Profile - plastic injected 2k - PLASTIC INJECTED COOL WHITE - 3P HORIZ 71
WXP0023	EVO Profile - plastic injected 2k - PLASTIC INJECTED COOL WHITE - 3P VERT 57
WXP0043	EVO Profile - plastic injected 2k - PLASTIC INJECTED COOL WHITE - 3P VERT 71
WXP0034	EVO Profile - plastic injected 2k - PLASTIC INJECTED COOL WHITE - 4M ENT 57
WXP0004	EVO Profile - plastic injected 2k - PLASTIC INJECTED COOL WHITE - 4M ENT 71
WXP0014	EVO Profile - plastic injected 2k - PLASTIC INJECTED COOL WHITE - 4P HORIZ 71
WXP0005	EVO Profile - plastic injected 2K - PLASTIC INJECTED COOL WHITE - 5M ENT 71
WXP0006	EVO Profile - plastic injected 2k - PLASTIC INJECTED COOL WHITE - 6M ENT 57
WXP0008	EVO Profile - plastic injected 2k - PLASTIC INJECTED COOL WHITE - 8M ENT 71
WXP0302	EVO Profile - plastic injected 2K - PLASTIC INJECTED DUNE - 1P
WXP0312	EVO Profile - plastic injected 2K - PLASTIC INJECTED DUNE - 2P HORIZ 71
WXP0322	EVO Profile - plastic injected 2K - PLASTIC INJECTED DUNE - 2P VERT 57
WXP0342	EVO Profile - plastic injected 2K - PLASTIC INJECTED DUNE - 2P VERT 71
WXP0313	EVO Profile - plastic injected 2K - PLASTIC INJECTED DUNE - 3P HORIZ 71

WXP0323	EVO Profile - plastic injected 2K - PLASTIC INJECTED DUNE - 3P VERT 57
WXP0343	EVO Profile - plastic injected 2K - PLASTIC INJECTED DUNE - 3P VERT 71
WXP0334	EVO Profile - plastic injected 2K - PLASTIC INJECTED DUNE - 4M ENT 57
WXP0304	EVO Profile - plastic injected 2K - PLASTIC INJECTED DUNE - 4M ENT 71
WXP0314	EVO Profile - plastic injected 2K - PLASTIC INJECTED DUNE - 4P HORIZ 71
WXP0305	EVO Profile - plastic injected 2K - PLASTIC INJECTED DUNE - 5M ENT 71
WXP0306	EVO Profile - plastic injected 2K - PLASTIC INJECTED DUNE - 6M ENT 57
WXP0308	EVO Profile - plastic injected 2K - PLASTIC INJECTED DUNE - 8M EN 71
WXP0101	EVO Profile - plastic painted 1K - PLASTIC PAINTED TITANE - 1M
WXP0186	EVO Profile - plastic painted 1K - PLASTIC PAINTED TITANE - 2x3x2M
WXP0196	EVO Profile - plastic painted 1K - PLASTIC PAINTED TITANE - 8M+8M
WXP0402	EVO Profile - plastic painted 2K - PLASTIC PAINTED CHAMPAGNE - 1P
WXP0412	EVO Profile - plastic painted 2K - PLASTIC PAINTED CHAMPAGNE - 2P HORIZ 71
WXP0422	EVO Profile - plastic painted 2K - PLASTIC PAINTED CHAMPAGNE - 2P VERT 57
WXP0442	EVO Profile - plastic painted 2K - PLASTIC PAINTED CHAMPAGNE - 2P VERT 71
WXP0413	EVO Profile - plastic painted 2K - PLASTIC PAINTED CHAMPAGNE - 3P HORIZ 71
WXP0423	EVO Profile - plastic painted 2K - PLASTIC PAINTED CHAMPAGNE - 3P VERT 57
WXP0443	EVO Profile - plastic painted 2K - PLASTIC PAINTED CHAMPAGNE - 3P VERT 71
WXP0434	EVO Profile - plastic painted 2K - PLASTIC PAINTED CHAMPAGNE - 4M ENT 57
WXP0404	EVO Profile - plastic painted 2K - PLASTIC PAINTED CHAMPAGNE - 4M ENT 71
WXP0414	EVO Profile - plastic painted 2K - PLASTIC PAINTED CHAMPAGNE - 4P HORIZ 71
WXP0405	EVO Profile - plastic painted 2K - PLASTIC PAINTED CHAMPAGNE - 5M ENT 71
WXP0406	EVO Profile - plastic painted 2K - PLASTIC PAINTED CHAMPAGNE - 6M ENT 57
WXP0408	EVO Profile - plastic painted 2K - PLASTIC PAINTED CHAMPAGNE - 8M ENT 71
WXP0502	EVO Profile - plastic painted 2K - PLASTIC PAINTED COPPER - 1P
WXP0512	EVO Profile - plastic painted 2K - PLASTIC PAINTED COPPER - 2P HORIZ 71
WXP0522	EVO Profile - plastic painted 2K - PLASTIC PAINTED COPPER - 2P VERT 57
WXP0542	EVO Profile - plastic painted 2K - PLASTIC PAINTED COPPER - 2P VERT 71
WXP0513	EVO Profile - plastic painted 2K - PLASTIC PAINTED COPPER - 3P HORIZ 71
WXP0523	EVO Profile - plastic painted 2K - PLASTIC PAINTED COPPER - 3P VERT 57
WXP0543	EVO Profile - plastic painted 2K - PLASTIC PAINTED COPPER - 3P VERT 71
WXP0534	EVO Profile - plastic painted 2K - PLASTIC PAINTED COPPER - 4M ENT 57
WXP0504	EVO Profile - plastic painted 2K - PLASTIC PAINTED COPPER - 4M ENT 71
WXP0514	EVO Profile - plastic painted 2K - PLASTIC PAINTED COPPER - 4P HORIZ 71
WXP0505	EVO Profile - plastic painted 2K - PLASTIC PAINTED COPPER - 5M ENT 71
WXP0506	EVO Profile - plastic painted 2K - PLASTIC PAINTED COPPER - 6M ENT 57
WXP0508	EVO Profile - plastic painted 2K - PLASTIC PAINTED COPPER - 8M ENT 71
WXP0202	EVO Profile - plastic painted 2K - PLASTIC PAINTED MISTRAL - 1P
WXP0212	EVO Profile - plastic painted 2K - PLASTIC PAINTED MISTRAL - 2P HORIZ 71
WXP0222	EVO Profile - plastic painted 2K - PLASTIC PAINTED MISTRAL - 2P VERT 57
WXP0242	EVO Profile - plastic painted 2K - PLASTIC PAINTED MISTRAL - 2P VERT 71
WXP0213	EVO Profile - plastic painted 2K - PLASTIC PAINTED MISTRAL - 3P HORIZ 71
WXP0223	EVO Profile - plastic painted 2K - PLASTIC PAINTED MISTRAL - 3P VERT 57
WXP0243	EVO Profile - plastic painted 2K - PLASTIC PAINTED MISTRAL - 3P VERT 71
WXP0234	EVO Profile - plastic painted 2K - PLASTIC PAINTED MISTRAL - 4M ENT 57
WXP0204	EVO Profile - plastic painted 2K - PLASTIC PAINTED MISTRAL - 4M ENT 71
WXP0214	EVO Profile - plastic painted 2K - PLASTIC PAINTED MISTRAL - 4P HORIZ 71
WXP0205	EVO Profile - plastic painted 2K - PLASTIC PAINTED MISTRAL - 5M ENT 71
WXP0206	EVO Profile - plastic painted 2K - PLASTIC PAINTED MISTRAL - 6M ENT 57
WXP0208	EVO Profile - plastic painted 2K - PLASTIC PAINTED MISTRAL - 8M ENT 71
WXP0902	PLASTIC PAINTED NEW TAUPE - 1P
WXP0912	PLASTIC PAINTED NEW TAUPE - 2P HORIZ 71
WXP0922	PLASTIC PAINTED NEW TAUPE - 2P VERT 57
WXP0942	PLASTIC PAINTED NEW TAUPE - 2P VERT 71
WXP0913	PLASTIC PAINTED NEW TAUPE - 3P HORIZ 71
WXP0923	PLASTIC PAINTED NEW TAUPE - 3P VERT 57
WXP0943	PLASTIC PAINTED NEW TAUPE - 3P VERT 71
WXP0934	PLASTIC PAINTED NEW TAUPE - 4M ENT 57
WXP0904	PLASTIC PAINTED NEW TAUPE - 4M ENT 71
WXP0914	PLASTIC PAINTED NEW TAUPE - 4P HORIZ 71
WXP0905	PLASTIC PAINTED NEW TAUPE - 5M ENT 71
WXP0906	PLASTIC PAINTED NEW TAUPE - 6M ENT 57
WXP0908	PLASTIC PAINTED NEW TAUPE - 8M ENT 71
WXP0702	EVO Profile - plastic painted 2K - PLASTIC PAINTED PETROL BLUE - 1P
WXP0712	EVO Profile - plastic painted 2K - PLASTIC PAINTED PETROL BLUE - 2P HORIZ 71
WXP0722	EVO Profile - plastic painted 2K - PLASTIC PAINTED PETROL BLUE - 2P VERT 57



WXP0742	EVO Profile - plastic painted 2K - PLASTIC PAINTED PETROL BLUE - 2P VERT 71
WXP0713	EVO Profile - plastic painted 2K - PLASTIC PAINTED PETROL BLUE - 3P HORIZ 71
WXP0723	EVO Profile - plastic painted 2K - PLASTIC PAINTED PETROL BLUE - 3P VERT 57
WXP0743	EVO Profile - plastic painted 2K - PLASTIC PAINTED PETROL BLUE - 3P VERT 71
WXP0734	EVO Profile - plastic painted 2K - PLASTIC PAINTED PETROL BLUE - 4M ENT 57
WXP0704	EVO Profile - plastic painted 2K - PLASTIC PAINTED PETROL BLUE - 4M ENT 71
WXP0714	EVO Profile - plastic painted 2K - PLASTIC PAINTED PETROL BLUE - 4P HORIZ 71
WXP0705	EVO Profile - plastic painted 2K - PLASTIC PAINTED PETROL BLUE - 5M ENT 71
WXP0706	EVO Profile - plastic painted 2K - PLASTIC PAINTED PETROL BLUE - 6M ENT 57
WXP0708	EVO Profile - plastic painted 2K - PLASTIC PAINTED PETROL BLUE - 8M ENT 71
WXP0602	EVO Profile - plastic painted 2K - PLASTIC PAINTED ROSE HIP RED - 1P
WXP0612	EVO Profile - plastic painted 2K - PLASTIC PAINTED ROSE HIP RED - 2P HORIZ 71
WXP0622	EVO Profile - plastic painted 2K - PLASTIC PAINTED ROSE HIP RED - 2P VERT 57
WXP0642	EVO Profile - plastic painted 2K - PLASTIC PAINTED ROSE HIP RED - 2P VERT 71
WXP0613	EVO Profile - plastic painted 2K - PLASTIC PAINTED ROSE HIP RED - 3P HORIZ 71
WXP0623	EVO Profile - plastic painted 2K - PLASTIC PAINTED ROSE HIP RED - 3P VERT 57
WXP0643	EVO Profile - plastic painted 2K - PLASTIC PAINTED ROSE HIP RED - 3P VERT 71
WXP0634	EVO Profile - plastic painted 2K - PLASTIC PAINTED ROSE HIP RED - 4M ENT 57
WXP0604	EVO Profile - plastic painted 2K - PLASTIC PAINTED ROSE HIP RED - 4M ENT 71
WXP0614	EVO Profile - plastic painted 2K - PLASTIC PAINTED ROSE HIP RED - 4P HORIZ 71
WXP0605	EVO Profile - plastic painted 2K - PLASTIC PAINTED ROSE HIP RED - 5M ENT 71
WXP0606	EVO Profile - plastic painted 2K - PLASTIC PAINTED ROSE HIP RED - 6M ENT 57
WXP0608	EVO Profile - plastic painted 2K - PLASTIC PAINTED ROSE HIP RED - 8M ENT 71
WXP0802	EVO Profile - plastic painted 2K - PLASTIC PAINTED TEL GREEN - 1P
WXP0812	EVO Profile - plastic painted 2K - PLASTIC PAINTED TEAL GREEN - 2P HORIZ 71
WXP0822	EVO Profile - plastic painted 2K - PLASTIC PAINTED TEAL GREEN - 2P VERT 57
WXP0842	EVO Profile - plastic painted 2K - PLASTIC PAINTED TEAL GREEN - 2P VERT 71
WXP0813	EVO Profile - plastic painted 2K - PLASTIC PAINTED TEAL GREEN - 3P HORIZ 71
WXP0823	EVO Profile - plastic painted 2K - PLASTIC PAINTED TEAL GREEN - 3P VERT 57
WXP0843	EVO Profile - plastic painted 2K - PLASTIC PAINTED TEAL GREEN - 3P VERT 71
WXP0834	EVO Profile - plastic painted 2K - PLASTIC PAINTED TEAL GREEN - 4M ENT 57
WXP0804	EVO Profile - plastic painted 2K - PLASTIC PAINTED TEL GREEN - 4M ENT 71
WXP0814	EVO Profile - plastic painted 2K - PLASTIC PAINTED TEAL GREEN - 4P HORIZ 71
WXP0805	EVO Profile - plastic painted 2K - PLASTIC PAINTED TEL GREEN - 5M ENT 71
WXP0806	EVO Profile - plastic painted 2K - PLASTIC PAINTED TEAL GREEN - 6M ENT 57
WXP0808	EVO Profile - plastic painted 2K - PLASTIC PAINTED TEAL GREEN - 8M ENT 71
WXP0102	EVO Profile - plastic painted 2K - PLASTIC PAINTED TITANE - 1P
WXP0112	EVO Profile - plastic painted 2K - PLASTIC PAINTED TITANE - 2P HORIZ 71
WXP0122	EVO Profile - plastic painted 2K - PLASTIC PAINTED TITANE - 2P VERT 57
WXP0142	EVO Profile - plastic painted 2K - PLASTIC PAINTED TITANE - 2P VERT 71
WXP0113	EVO Profile - plastic painted 2K - PLASTIC PAINTED TITANE - 3P HORIZ 71
WXP0123	EVO Profile - plastic painted 2k - PLASTIC PAINTED TITANE - 3P VERT 57
WXP0143	EVO Profile - plastic painted 2K - PLASTIC PAINTED TITANE - 3P VERT 71
WXP0134	EVO Profile - plastic painted 2K - PLASTIC PAINTED TITANE - 4M ENT 57
WXP0104	EVO Profile - plastic painted 2k - PLASTIC PAINTED TITANE - 4M ENT 71
WXP0114	EVO Profile - plastic painted 2K - PLASTIC PAINTED TITANE - 4P HORIZ 71
WXP0105	EVO Profile - plastic painted 2K - PLASTIC PAINTED TITANE - 5M ENT 71
WXP0106	EVO Profile - plastic painted 2K - PLASTIC PAINTED TITANE - 6M ENT 57
WXP0108	EVO Profile - plastic painted 2K - PLASTIC PAINTED TITANE - 8M ENT 71
WXP1002	EVO Profile - plastic painted 2K - PLASTIC PAINTED ANTHRACITE - 1P
WXP1012	EVO Profile - plastic painted 2K - PLASTIC PAINTED ANTHRACITE - 2P HORIZ 71
WXP1022	EVO Profile - plastic painted 2K - PLASTIC PAINTED ANTHRACITE - 2P VERT 57
WXP1042	EVO Profile - plastic painted 2K - PLASTIC PAINTED ANTHRACITE - 2P VERT 71
WXP1013	EVO Profile - plastic painted 2K - PLASTIC PAINTED ANTHRACITE - 3P HORIZ 71
WXP1023	EVO Profile - plastic painted 2k - PLASTIC PAINTED ANTHRACITE - 3P VERT 57
WXP1043	EVO Profile - plastic painted 2K - PLASTIC PAINTED ANTHRACITE - 3P VERT 71
WXP1034	EVO Profile - plastic painted 2K - PLASTIC PAINTED ANTHRACITE - 4M ENT 57
WXP1004	EVO Profile - plastic painted 2k - PLASTIC PAINTED ANTHRACITE - 4M ENT 71
WXP1014	EVO Profile - plastic painted 2K - PLASTIC PAINTED ANTHRACITE - 4P HORIZ 71
WXP1005	EVO Profile - plastic painted 2K - PLASTIC PAINTED ANTHRACITE - 5M ENT 71
WXP1006	EVO Profile - plastic painted 2K - PLASTIC PAINTED ANTHRACITE - 6M ENT 57
WXP1008	EVO Profile - plastic painted 2K - PLASTIC PAINTED ANTHRACITE - 8M ENT 71

IEC 60884-1			
Clause	Requirement + Test	Result - Remark	Verdict
<b>8</b>	<b>MARKING</b>		P
8.1	Accessories marked as follows:		
	- rated current (A) .....	16	P
	- rated voltage (V) .....	250	P
	- symbol for nature of supply .....	~	P
	- manufacturer's or responsible vendor's name .....	HAGER	P
	- type reference .....	see "General product information"	P
	- degree of protection (first characteristic numeral) if higher than 2 .....		N/A
	- degree of protection (second characteristic numeral) if higher than 0 .....		N/A
	- degree of protection (first characteristic numeral) higher than 4 for fixed socket outlet in which case the second characteristic numeral shall also be marked .....		N/A
	- degree of protection (second characteristic numeral) higher than 2 for fixed socket outlet in which case the first characteristic numeral shall also be marked .....		N/A
	Socket-outlets with screwless terminals marked with the following:		
	- the length of insulation to be removed .....	12	P
	- an indication of the suitability to accept rigid conductors only (if any) .....		N/A
8.2	Symbols used: as required in the standard		P
	Marking for the nature of supply placed next to the marking for rated current and rated voltage		P
8.3	Marking of fixed socket-outlets placed on the main part:		
	- rated current, rated voltage and nature of supply		P
	- identification mark of the manufacturer or of the responsible vendor		P
	- length of insulation to be removed, if any		P
	- indication of the suitability to accept rigid conductors only for screwless terminals for those socket-outlets having this restriction	r	N/A
	- type reference		P
	Cover plates necessary for safety purposes and intended to be sold separately: marked with the manufacturer's or responsible vendor's name and type reference		P

IEC 60884-1			
Clause	Requirement + Test	Result - Remark	Verdict
	IP code, if applicable: marked so as to be easily discernible		N/A
	Fixed socket-outlets classified according to item b) of 7.2.5: identified by a triangle visible after installation unless they have an interface configuration different from that used in normal circuits .....		N/A
8.4	Plugs and portable socket-outlets: marking specified in 8.1, other than the type reference, easily discernible		N/A
	Plugs and portable socket-outlets for equipment of class II not marked with the symbol for class II construction		N/A
8.5	Neutral terminals: N .....		P
	Earthing terminals: [earth symbol] .....		P
	Markings not placed on screws or other easily removable parts		P
	Terminals for conductors not forming part of the main function of the socket-outlet:		
	- clearly identified unless their purpose is self-evident, or		P
	- indicated in a wiring diagram fixed to the accessory		N/A
	Identification of such terminals may be achieved by:		
	- their being marked with graphical symbols according to IEC 60417-2 or colours and/or alphanumeric system, or		P
	- their being marked with their physical dimensions or relative location		N/A
8.6	Surface-type mounting boxes forming an integral part of socket-outlets having an IP code higher than IP4X, or higher than IPX2, the IP code marked on the outside of its associated enclosure so as to be easily discernible		N/A
8.7	Indication of which position or with which special provision the declared IP of flush-type and semi-flush-type fixed socket-outlets having IP>X0 is ensured		N/A
8.8	Marking durable and clearly legible with normal or corrected vision, without additional magnification. Test: 15 s with water and 15 s with petroleum spirit		P
<b>9</b>	<b>CHECKING OF DIMENSIONS</b>		<b>P</b>
9.1	Accessories and surface-type mounting boxes comply with the appropriate standard sheets and corresponding gauges, if any	See Annex	P



IEC 60884-1			
Clause	Requirement + Test	Result - Remark	Verdict
	Insertion of plugs into fixed or portable socket-outlets ensured by their compliance with the relevant standard sheets		P
	Compliance checked by measurement and by means of gauges with manufacturing tolerances as shown in table 2	See Annex	P
9.2	It is not possible to engage a plug with:		
	- a socket-outlet having a higher voltage rating or a lower current rating;		P
	- a socket-outlet with a different number of live poles (exception admitted provided that no dangerous situation can arise);		P
	- a socket-outlet with earthing contact, if the existing plug of the present national system is a plug for class 0 equipment;		P
	Engagement of an existing plugs on the present national system for equipment of class 0 or of class I with a socket-outlet exclusively designed to accept plugs for class II equipment		P
	Impossibility of insertion checked by applying a gauge, for 1 min, with a force of:		
	- 150 N (rated current $\leq$ 16A);		P
	- 250 N (rated current $>$ 16A)		N/A
	Accessories with elastomeric or thermoplastic material: test carried out at $(35 \pm 2)$ °C		P
9.3	Deviations from standard sheets made only if they provide technical advantage and do not affect the purpose and safety of accessories complying with standard sheet		N/A

<b>10</b>	<b>PROTECTION AGAINST ELECTRIC SHOCK</b>		<b>P</b>
10.1	Live parts not accessible, even after removal of parts which can be removed without the use of a tool for:		
	Fixed socket-outlets		P
	Plugs when the plug is in partial or complete engagement with a socket-outlet		N/A
	Test with test probe B of IEC 61032		P
	Accessories with elastomeric or thermoplastic material: additional test carried out at $(35 \pm 2)$ °C with test probe 11 of IEC 61032 (75 N for 1 min)		P

IEC 60884-1			
Clause	Requirement + Test	Result - Remark	Verdict
	During the test: accessories not deform and no live parts accessible		P
	Plugs and portable socket-outlets pressed with a force of 150 N for 5 min as shown in figure 8: specimens not show deformation		N/A
10.2	Accessible parts (with exception of small screws and the like for fixing main parts and covers or cover plates): made of insulating material		P
	Cover or cover plates of fixed socket-outlets and accessible parts of portable socket-outlets: made of metal if the requirements of 10.2.1 or 10.2.2 are fulfilled		P
10.2.1	Accessible metal parts or accessible metal parts protected by supplementary insulation made by insulating linings or insulating barriers		P
	Insulating linings or insulating barriers cannot be removed without being permanently damaged		P
	Insulating linings or insulating barriers cannot be replaced in an incorrect position and, if they are omitted, accessories are rendered inoperable or manifestly incomplete		P
	There is no risk of accidental contact between live parts and metal covers or cover plates		P
10.2.2	Accessible metal parts are reliably connected, through a low-resistance connection, to the earth during fixing		P
10.3	Contact between a pin of a plug and a live socket-contact of a socket-outlet not possible while any other pin is accessible		P
	Compliance checked by manual test and by means of gauges with tolerances as specified in table 2		P
	Accessories with elastomeric or thermoplastic material: test carried out at $(35 \pm 2) ^\circ\text{C}$		P
	Socket-outlets with enclosure or bodies of rubber or polyvinyl chloride: test carried out with a force of 75 N for 1 min		N/A
	Fixed socket-outlets provided with metal covers or cover plates: clearance of at least 2 mm required between a pin and a socket-contact when another pin(s) is(are) in contact with the metal covers or cover plates (mm)..... :		N/A
10.4	External parts of plugs made of insulating material		N/A
	Overall dimensions of rings around pins not exceed 8 mm concentric with respect to the pin		N/A

IEC 60884-1			
Clause	Requirement + Test	Result - Remark	Verdict
10.5	Shuttered socket-outlets: live parts not accessible, without a plug in engagement, with the gauges shown in figure 9 and 10		P
	Live contacts automatically screened when the plug is withdrawn		P
	Shutters so designed that a plug is inserted with the same movement in a socket outlet with shutters as in a socket-outlet without shutters		P
	Means cannot easily be operated by anything other than a plug and not depend upon parts which are liable to be lost		P
	Gauge of figure 9, applied to the entry holes corresponding to live contacts with a force of 20 N, for approximately 5 s, successively in three directions, does not touch live parts		P
	Steel gauge of figure 10, applied to the entry holes corresponding to live contacts with a force of 1 N for approximately 5 s, in three directions, does not touch live parts		P
	Accessories with elastomeric or thermoplastic material: test carried out at $(35 \pm 2) ^\circ\text{C}$		P
10.6	Earthing contacts of a socket-outlet designed that they cannot be deformed by the insertion of a plug		P
	Test plug inserted into the socket-outlet with a force of 150 N for 1 min		P
10.6	Earthing contacts of a socket-outlet designed that they cannot be deformed by the insertion of a plug		P
	After this test: socket-outlet still comply with the requirements of clause 9		P
10.7	Socket-outlet with or without lid with increased protection: live parts not accessible		N/A
	Test wire of 1 mm diameter (figure 10) applied with a force of 1 N on all accessible surfaces does not touch live parts		N/A
	Accessories with elastomeric or thermoplastic material: test carried out at $(35 \pm 2) ^\circ\text{C}$		N/A
	Socket-outlet tested without a plug inserted with the lid, if any, open		
<b>11</b>	<b>PROVISION FOR EARTHING</b>		<b>P</b>
11.1	Earth connection made before the current-carrying contacts of the plug become live		P

IEC 60884-1			
Clause	Requirement + Test	Result - Remark	Verdict
	Current-carrying pins are separated before the earth connection is broken		P
11.2	Earthing terminals of rewirable accessories comply with clause 12		P
	Earthing terminals of the same size as the corresponding terminals for the supply conductors		P
	Earthing terminals of rewirable accessories: internal		P
	Earthing terminals of fixed socket-outlets: fixed to the base or to a part reliably fixed to the base		P
	Earthing contacts of fixed socket-outlets:		
	- fixed to the base, or		P
	- fixed to the cover (reliably connected to the earthing terminals; contact pieces silver plated or with adequate protection)		N/A
	Parts of earthing circuit in one piece or reliably connected by riveting, welding, or the like		P
11.3	Accessible metal parts of fixed socket-outlets: permanently and reliably connected to the earthing terminal		N/A
11.4	Socket-outlets, having an IP>X0, with enclosure of insulating material and more than one cable inlet, provided with:		N/A
	- an internal fixed earthing terminal, or		N/A
	- adequate space for a floating terminal (test connection using the type of terminal specified by the manufacturer), unless		N/A
	- earthing terminal of socket-outlet itself allows the connection of an incoming and an outgoing earthing conductor		N/A
11.5	Connection between earthing terminal and accessible metal parts: of low resistance		P
	Test current equal to 1,5 times the rated current or 25 A (A) .....	25	—
	Resistance not exceed 0,05 $\Omega$ ( $\Omega$ ) .....	0,004	P
11.6	Fixed socket-outlets according to item b) of 7.2.5: earthing socket contact and its terminal electrically separated from any metal mounting means or other exposed conductive parts which may be connected to the protective earthing circuit of the installation		N/A

IEC 60884-1			
Clause	Requirement + Test	Result - Remark	Verdict
<b>12</b>	<b>TERMINALS AND TERMINATIONS</b>		P
	All the test on terminals, with the exception of the tests of 12.3.11 and 12.3.12, made after the test of clause 16		P
<b>12.1</b>	<b>General</b>		
12.1.1	Rewirable fixed socket-outlets provided with screw-type terminals or with screwless terminals .....	Screwless terminals	P
	Rewirable plugs and portable socket-outlets provided with terminals with screw clamping .....		N/A
	Pre-soldered flexible conductors used: pre-soldered area outside the clamp area of screw-type terminals		N/A
	Clamping means of terminals: not serve to fix any other components		P
12.1.2	Non-rewirable accessories provided with soldered, welded, crimped or equally effective permanent connections (termination) .....		N/A
	Screwed or Snap-On connections not used		N/A
	Connections made by crimping a pre-soldered flexible conductor not permitted		N/A
<b>12.2</b>	<b>Terminals with screw clamping for external copper conductors</b>		N/A
12.2.1	Accessories provided with terminals which allows the proper connection of copper conductors as shows in table 3		N/A
	Rated current (A); Type of accessories .....		—
	Type of conductor (rigid / flexible) .....		—
	Smallest / largest cross-sectional area (mm <sup>2</sup> ) .....		—
	Diameter of the largest conductor (mm) .....		—
	Figure of terminal .....		—
	Minimum diameter D (minimum dimensions) of conductor space: required (mm); measured (mm) . :		N/A
12.2.2	Terminals allow the conductor to be connected without special preparation		N/A
12.2.3	Terminals have adequate mechanical strength		N/A
	Screws and nut for clamping the conductors have metric ISO thread or a comparable thread		N/A
	Screws not of soft metal such as zinc or aluminium		N/A
12.2.4	Terminals resistant to corrosion		N/A
12.2.5	Terminals clamp the conductor(s) without undue damage	See appended table 12.2.5	N/A

IEC 60884-1			
Clause	Requirement + Test	Result - Remark	Verdict
	During the test: conductor not slip out, no break near clamping unit and no damage		N/A
12.2.6	Terminals clamp the conductor reliably between metal surfaces	See appended table 12.2.6	N/A
	During the test: conductor not move noticeably		N/A
12.2.7	Terminals designed or placed that the conductor cannot slip out while the clamping screws or nuts are tightened	See appended table 12.2.7	N/A
	After the test: no wire of the conductor escaped from the clamping unit		N/A
12.2.8	Terminals not work loose from their fixing to accessories		N/A
	Torque test (screws and nuts tightened and loosened 5 times):		N/A
	- rated current (A) .....		—
	- copper conductor of the largest cross-sectional area (mm <sup>2</sup> ) (table 3) .....		—
	- type of conductor (solid or stranded) .....		—
	- torque (Nm) (table 6 or appropriate figures 2, 3 or 4) .....		—
	During the test: terminals not work loose and show no damage		N/A
12.2.9	Clamping screws or nuts of earthing terminals: adequately locked against accidental loosening, not possible to loosen them without the aid of a tool		N/A
12.2.10	Earthing terminals: no risk of corrosion		N/A
	Body of brass or other metal no less resistant to corrosion		N/A
	The body is a part of a frame or enclosure of aluminium alloy: precautions are taken to avoid the risk of corrosion		N/A
12.2.11	Pillar terminals: distance <i>g</i> no less than the value specified in figure 2: required (mm); measured (mm) .....		N/A
	Mantle terminals: distance <i>g</i> no less than the value specified in figure 5: required (mm); measured (mm) .....		N/A
<b>12.3</b>	<b>Screwless terminals for external copper conductors</b>		<b>P</b>
12.3.1	Screwless terminals of the type suitable for:		
	- for rigid copper conductors only, or		N/A

IEC 60884-1			
Clause	Requirement + Test	Result - Remark	Verdict
	- for both rigid and flexible copper conductors (tests carried out with rigid and then repeated with flexible conductors)		P
12.3.2	Screwless terminals provided with two clamping units each allowing the proper connection of rigid or of rigid and flexible conductors having nominal cross-sectional areas from 1,5 up to 2,5 mm <sup>2</sup> (table 7)		P
	Two conductors to be connected: each conductor introduced in a separate clamping unit		P
12.3.3	Screwless terminals allow the conductor to be connected without special preparation		P
12.3.4	Parts of screwless terminals intended for carrying current of materials as specified in 26.5		P
12.3.5	Screwless terminals clamp specified conductors with sufficient contact pressure without undue damage to the conductor		P
	Conductor clamped between metal surfaces		P
12.3.6	It is clear how the connection and disconnection of the conductors is to be made		P
	Disconnection of a conductor require an operation, other than a pull, so that can be made manually with or without a general-purpose tool		P
	It is not possible to confuse the opening intended for the use of a tool with the opening intended for the conductor		P
12.3.7	Screwless terminals intended for the interconnection of two or more conductors:		
	- the clamping of one of the conductors is independent of the clamping of the other conductor(s)		P
	- during the connection or disconnection the conductors can be connected or disconnected either at the same time or separately		P
	- each conductor introduced in a separate clamping unit.		P
	- it is possible to clamp securely any number of conductors up to the maximum as designed. Number of conductors; Nominal cross-sectional area (mm <sup>2</sup> ) .....		P
12.3.8	Screwless terminals of fixed socket-outlets: adequate insertion obvious and over-insertion prevented		P
12.3.9	Screwless terminals properly fixed to the socket-outlets		P

IEC 60884-1			
Clause	Requirement + Test	Result - Remark	Verdict
	Not work loose when conductors are connected or disconnected		P
	Self-hardening resins used to fix terminals not subject to mechanical stress		N/A
12.3.10	Screwless terminals withstand mechanical stresses occurring in normal use	See appended table 12.3.10	P
	During application of the pull conductor not come out of the terminal		P
	Additional test with apparatus shown in figure 11	See appended table 12.3.10	P
	During the test: conductors not moved noticeably in the clamping unit		P
	After these tests: neither terminals nor clamping means have worked loose and conductors show no deterioration		P
12.3.11	Screwless terminals withstand electrical and thermal stresses occurring in normal use	See appended table 12.3.11	P
	After the test: inspection show no changes		P
	Repetition of mechanical strength test according to 12.3.10	See appended table 12.3.11	P
	During application of the pull conductor not come out of the terminal		P
	Additional test with apparatus shown in figure 11	See appended table 12.3.11	P
	During the test: conductors not moved noticeably in the clamping unit		P
	After these tests: neither terminals nor clamping means have worked loose and conductors show no deterioration		P
12.3.12	Screwless terminals: connected rigid solid conductor remains clamped, even when deflected during normal installation	See appended table 12.3.12	P

<b>13</b>	<b>CONSTRUCTION OF FIXED SOCKET-OUTLETS</b>		P
13.1	Socket-contact assembly have sufficient resilience to ensure adequate contact pressure on plug pins		P
	Part of socket-contact assembly ensure metallic opposing contacts at least on two sides of each pins		P
13.2	Socket-contact and pin(s) of socket-outlet which are made of copper or copper alloy, as specified in 26.5, are considered as complying with this requirement		P



IEC 60884-1			
Clause	Requirement + Test	Result - Remark	Verdict
	The pin(s) of socket-outlets so constructed in such a way that the mechanical strength of the pin(s) does not depend on the plastic material		P
	Compliance is checked by inspection and in case of doubt by the tests of 14.2 and Clause 21 on a new set of specimens without plastic		P
13.3	Insulating linings, barriers and the like: adequate mechanical strength		P
13.4	Socket-outlets constructed as to permit		
	- easy introduction into the terminal and reliable connection of the conductors in the terminals, except for lead wires of pilot lights		P
	- easy fixing of the main part to a wall or in a mounting box		P
	- correct positioning of the conductors		P
	- adequate space between the underside of the main part and the surface on which the main part is mounted;		P
	- adequate space between the sides of the main part and the enclosure (cover or box);		P
	Socket-outlets having screwless terminals, constructed that the connecting and/or disconnecting means of the screwless terminals cannot be activated by the conductors during and after installation		P
	Compliance is checked by inspection and in case of doubt by the following test		
	The test is carried out with a solid copper conductor having the smallest cross-sectional area, as specified in 12.3.2. (mm <sup>2</sup> ).....:	1,5	P
	If it is not possible to exert a force onto the connecting/disconnecting device, the product is deemed to comply with the requirements without further tests.		P
	During the application of the pull, the conductor do not come out of the screwless terminal		P
	In addition socket-outlets classified as design A: permit easy positioning and removal of the cover or cover plate, without displacing the conductors or activating the connecting and/or disconnecting means of screwless terminals.		P

IEC 60884-1			
Clause	Requirement + Test	Result - Remark	Verdict
	Compliance is checked by inspection and by an installation test with conductors of the largest nominal cross-sectional area specified in Table 3 (mm <sup>2</sup> )......:	2,5	P
13.5	Socket-outlets designed that full engagement of associated plugs is not prevented by any projection from their engagement face		P
	Gap between the engagement face of the socket-outlet and the plug: not exceed 1 mm		P
13.6	Covers provided with bushings for the entry holes for the pins: not possible to remove them from the outside or for them to become detached inadvertently from the inside when the cover is removed		N/A
13.7	Covers, cover-plates or parts of them intended to ensure protection against electric shock:		
	- held in place at two or more points by effective fixings		P
	- fixed by means of a single fixing, for example, by a screw, provided that they are located by another means (for example, by a shoulder)		N/A
	Fixings of covers or cover-plates of socket-outlets of design A serve to fix the main parts: there are means to maintain the base in position, even after removal of the covers or cover-plates		P
13.7.1	Covers or cover-plates whose fixings are of the screw-type:		N/A
	Compliance checked by inspection only		N/A
13.7.2	Covers or cover-plates whose fixing is not dependent on screws and whose removal is obtained by applying a force in a direction approximately perpendicular to the mounting/supporting surface:		P
	Compliance checked, when their removal may give access, with the standard test finger:		
	to live parts: by the test of 24.14 (verification of the non-removal and the removal)		N/A
	to non-earthed metal parts separated from live parts in such a way that creepage distances and clearances have the values shown in table 23: by the test of 24.15 (verification of the non-removal and the removal)		P

IEC 60884-1			
Clause	Requirement + Test	Result - Remark	Verdict
	only to parts of insulating material, or earthed metal parts, or metal parts separated from live parts in such a way that creepage distances and clearances have twice the values shown in table 23, or live parts of SEL V circuits not greater than 25 V a.c.: by the test of 24.16 (verification of the non-removal and the removal)		N/A
13.7.3	Covers or cover-plates the fixing of which is not dependent on screws and whose removal is obtained by using a tool, in accordance with the manufacturer's instructions given in an instruction sheet or in other documentation:		N/A
	Compliance checked, when their removal may give access, with the standard test finger:		N/A
	to live parts: by the test of 24.14 (verification of the non-removal only)		N/A
	to non-earthed metal parts separated from live parts in such a way that creepage distances and clearances have the values shown in table 23: by the test of 24.15 (verification of the non-removal only)		N/A
	only to parts of insulating material, or earthed metal parts, or metal parts separated from live parts in such a way that creepage distances and clearances have twice the values shown in table 23, or live parts of SEL V circuits not greater than 25 V a.c.: by the test of 24.16 (verification of the non-removal only)		N/A
13.8	Cover-plate intended for a socket-outlet with earthing contact: not interchangeable with a cover-plate intended for a socket-outlet without earthing contact		P
13.9	Surface-type socket-outlets: no free openings in their enclosures		P
13.10	Screws or other means for mounting the socket-outlet on a surface in a box or enclosure: easily accessible from the front		P
	Fixing means not serve any other fixing purpose		P
13.11	Multiple socket-outlets with a common base: provided with fixed links for the interconnection of the contacts in parallel		N/A
	Fixing of the links independent from the connection of the supply wires		N/A
13.12	Multiple socket-outlets, comprising separate bases: correct position of each base ensured		P
	Fixing of each base independent of the fixing of the combination to the mounting surface		P

IEC 60884-1			
Clause	Requirement + Test	Result - Remark	Verdict
13.13	Mounting plate of surface-type socket-outlets: adequate mechanical strength		P
13.14	Socket-outlets withstand the lateral strain imposed by equipment likely to be introduced into them		P
	Socket-outlets 16A 250V: test made 4 times with the socket-outlet turned through 90°, 5 N for 1 min (device shown in fig. 13)		P
	During the test: device not become disengaged from the socket-outlet		P
	After the test:		
	- no damage		P
	- socket-outlets comply with clause 22		P
13.15	Socket-outlets are not an integral part of lampholders		P
13.16	Surface-type socket-outlets having IP>20 are according to their IP classification when fitted with conduits or with sheathed cables and without a plug in engagement		N/A
	Surface-type socket-outlets having IPX4 and IPX6 have provision for opening a drain hole		N/A
	Socket-outlets with a drain hole: drain hole is not less than 5 mm in diameter, or 20 mm <sup>2</sup> in area with a width and a length of not less than 3 mm .....		N/A
	Drain hole: effective		N/A
	Lid springs (if any): of corrosion-resistant material (bronze or stainless steel) .....		N/A
13.17	Earthing pins: adequate mechanical strength		P
	Not solid pins: compliance checked by inspection and by the test of 14.2 made after the tests of clause 21		N/A
13.18	Earthing contacts, phase contacts and neutral contacts :		
	- locked against rotation;		P
	- when the product is ready for the wiring do not possible to be removed without the use of a tool		P
13.19	Metal strips of the earthing circuit: no burrs which might damage the insulation of the supply conductors		P
13.20	Socket-outlets to be installed in a box: designed that the conductor ends can be prepared after the box is mounted in position, but before the socket-outlet is fitted in the box		P

IEC 60884-1			
Clause	Requirement + Test	Result - Remark	Verdict
13.21	Inlet openings: allow the introduction of the conduit or the sheath of the cable		N/A
	Surface-type socket-outlets:		
	the conduit or sheath of the cable can enter at least 1 mm into the enclosure		N/A
	inlet opening for conduit entries, or at least two of them if there are more than one, capable of accepting conduit sizes of 16, 20, 25 or 32 according to IEC 60423 or a combination of at least two of any of these sizes		N/A
	inlet opening for cable entries capable of accepting cables having the dimensions specified in table 14 or be as specified by the manufacturer: rated current (A); Limits of external dimensions of cable min/max (mm) ..... :	14,5	N/A
13.22	Membranes (grommets) in inlet openings: reliably fixed and not displaced by the mechanical and thermal stresses occurring in normal use		N/A
	Test on membranes subjected to the ageing treatment specified in 16.1 and assembled in the accessories		N/A
	Accessories placed at $(40 \pm 2)$ °C for 2 h. Force of 30 N applied for 5 s by test probe 11 of IEC 61032. During the test: no deformation		N/A
	Membranes likely to be subjected to an axial pull: axial pull of 30 N applied for 5 s. During the test: membranes not become detached		N/A
	After the test: no harmful deformation, cracks or similar damage		N/A
	Test repeated with membranes not subjected to any treatment		N/A
13.23	Membranes in inlet openings: introduction of the cables into the accessory permitted when the ambient temperature is low		N/A
	Test on membranes not subjected to the ageing treatment specified in 16.1 and assembled in the accessories		N/A
	Accessories kept at $(-15 \pm 2)$ °C for 2 h: possibility to introduce cables of the largest diameter through membranes		N/A
	After the test: no harmful deformation, cracks or similar damage		N/A

Sub-cl.:	14	Date:		Tested by:	
Sample(s):		Tamb:		Signature:	

IEC 60884-1			
Clause	Requirement + Test	Result - Remark	Verdict
<b>NOTE</b>			
<b>14</b>	<b>CONSTRUCTION OF PLUGS AND PORTABLE SOCKET-OUTLETS</b>		N/A
14.1	Non-rewirable portable accessories:		N/A
	flexible cable cannot be separated from the accessory without making it permanently useless		N/A
	Accessory cannot be opened by hand or by using a general purpose tool, for example a screwdriver used as such		N/A
14.2	Pins of portable accessories: adequate mechanical strength		N/A
	Test for pins not solid (made after clause 21): force of 100 N exerted on the pin, according to figure 14, for 1 min by means of a steel rod Ø 4,8 mm		N/A
	During the application of the force: reduction of the dimension of the pin not exceed 0,15 mm		N/A
	After removal of the rod: dimensions of the pin not changed by more than 0,06 mm		N/A
14.3	Pin(s) and contacts of portable accessories :		N/A
	- locked against rotation;		N/A
	- not removable without dismantling the plug;		N/A
	- adequately fixed in the body of the plug		N/A
	Earthing or neutral pins or contacts of plugs: not possible to arrange in an incorrect position		N/A
	The pin(s) of portable accessories constructed in such a way that the mechanical strength of the pin(s) does not depend on the plastic material		N/A
	Compliance is checked by inspection and in case of doubt by the tests of 14.2 and Clause 21 on a new set of specimens without plastic		N/A
	Surfaces of plug pin(s) smooth and free from burrs or sharp edges and other irregularities which could cause damage or excessive wear to corresponding socket contacts or shutters		N/A
14.4	Earthing contacts, phase contacts and neutral contacts of portable socket-outlets :		N/A
	- locked against rotation		N/A
	- removable only with the aid of a tool, after dismantling the socket-outlet		N/A
	In addition, for single portable socket-outlets compliance is checked by the test of 24.2		N/A
14.5	Socket-contact assemblies: sufficient resilience		N/A
	Parts of socket-contact assemblies:		N/A

IEC 60884-1			
Clause	Requirement + Test	Result - Remark	Verdict
	- are not of insulating material except ceramic, or other material with no less suitable characteristics		N/A
	- ensure metallic contacts at least on two opposing sides of each pin		N/A
	Contact pressure of the contact tube does not depend on soldered connection only		N/A
14.6	Pins and socket-contacts: resistant to corrosion and abrasion		N/A
	Socket contacts and pin(s) of socket-outlets, which are made of copper or copper alloy, as specified in 26.5, are considered as complying with this requirement.		N/A
14.7	Enclosures of rewirable portable accessories: completely enclose terminals and ends of flexible cable		N/A
	Construction is unlikely that:		N/A
	- cores not pressed against each other causing damage		N/A
	- cores of live conductor not pressed against accessible metal parts		N/A
	- core of earthing conductor not pressed against live parts		N/A
14.8	Rewirable portable accessories: terminal screws or nuts cannot become loose and fall out of position and establish an electrical connection between live parts and earthing terminal or metal parts		N/A
14.9	Rewirable portable accessories with earthing contact: ample space for slack of earthing (test)		N/A
	Non-rewirable non-moulded-on accessories with earthing contact: current-carrying conductors stressed before the earthing conductor if the flexible cable slips in its anchorage		N/A
14.10	Terminals of rewirable portable accessories and terminations of non-rewirable portable accessories: located and shielded that loose wires not present a risk of electric shock		N/A
	Non-rewirable moulded-on portable accessories: provided with means to prevent loose wires of a conductor from reducing the minimum isolation distance requirements		N/A
14.10.1	Rewirable accessories: test with 6 mm free wire		N/A
	free wire of a conductor connected to a live terminal not touch any accessible metal part or able to emerge from the enclosure		N/A

IEC 60884-1			
Clause	Requirement + Test	Result - Remark	Verdict
	free wire of a conductor connected to an earthing terminal not touch a live part		N/A
14.10.2	Non-rewirable, non-moulded-on accessories: test with a free wire of length equivalent to the maximum designed stripping length declared by the manufacturer plus 2 mm		N/A
	free wire of a conductor connected to a live termination not touch any accessible metal part or reduce creepage distance and clearance below 1,5 mm to the external surface		N/A
	free wire of a conductor connected to an earth termination not touch any live part		N/A
14.10.3	Non-rewirable, moulded-on accessories:		N/A
	Verification of means to prevent stray wires reducing the minimum distance through insulation to external accessible surface below 1,5 mm		N/A
14.11	Rewirable portable accessories:		N/A
	- clear how relief from strain and prevention of twisting is intended to be effected		N/A
	- cord anchorage, or at least part of it, integral with or securely fixed to one of the component parts of the plug or portable socket-outlet		N/A
	- makeshift methods not used		N/A
	- cord anchorage suitable for the different types of flexible cable which may be connected to it; screws, if any: not serve to fix any other component		N/A
	- cord anchorages: of insulating material or provided with an insulating lining fixed to the metal parts		N/A
	- metal parts of cord anchorages, including clamping screws: insulated from the earthing circuit		N/A
14.12	Rewirable portable accessories and non-rewirable non-moulded on portable accessories: it is not possible to remove covers, cover-plates or parts of them intended to ensure protection against electric shock without the use of a tool		N/A
14.13	Covers of portable socket-outlets: bushings for entry holes for the pins not removable from the outside or detachable inadvertently from the inside		N/A
14.14	Screws intended to allow access to interior of the accessory: captive		N/A
14.15	Engagement face of plugs: no projections		N/A
14.16	Engagement face of portable socket-outlets: no projection		N/A



IEC 60884-1			
Clause	Requirement + Test	Result - Remark	Verdict
14.17	Portable accessories of IP>20: enclosed according to their IP classification		N/A
	Plugs having IP>20: adequately enclosed with the exception of the engagement face		N/A
	Portable socket-outlets having IP>20: adequately enclosed without a plug in engagement		N/A
	Lid springs (if any): of corrosion-resistant material (bronze or stainless steel) .....		N/A
14.18	Portable socket-outlets: means for suspension from a wall or other mounting surfaces not allow access to live parts		N/A
	No free openings between space intended for suspension means by which the socket-outlet is fixed to the wall, or other mounting surface and live parts		N/A
14.19	Combinations of portable accessories and switches, circuit-breakers or other devices comply with relevant individual IEC standards, if relevant combined product standard does not exist .....		N/A
14.20	Portable accessories: not integral part of lampholders		N/A
14.21	Plugs for equipment of class II:		N/A
	- rewirable or non-rewirable		N/A
	- if part of a cord set: provided with a connector for equipment of class II		N/A
	- if part of a cord extension set: provided with a portable socket-outlet for equipment of class II		N/A
14.22	Components (switches and fuses) incorporated in accessories: comply with the relevant IEC standard as far as it applies		N/A
	Components incorporated in portable accessories so rated, or so protected, that overloading of either the component or the plug or the socket-outlet portion cannot occur in normal use		N/A
	Requirements for switches incorporated in portable accessories are detailed in Annex D	See appended table 14.22	N/A
	For portable socket-outlets and rewirable plugs the incorporated overcurrent protective device in the accessory shall have a rated current equal to or less than the rated current of the accessory		N/A
	Any other component(s), such as switches or control devices, have a rated current not less than (rated current referred to resistive load):		N/A
	- the rated current of the accessory or		N/A

IEC 60884-1			
Clause	Requirement + Test	Result - Remark	Verdict
	- the rated current of the incorporated overcurrent protective device, if any		N/A
	For non-rewirable plugs, any other incorporated component(s), such as switches or control devices, have a rated current not less than:		N/A
	- the test current for the combination of the accessory and the cable as indicated in Table 20, for Clause 21, or		N/A
	- the rated current of the incorporated overcurrent protective device, if any		N/A
	Any incorporated component(s) have a rated voltage not less than the rated voltage of the accessory		N/A
	Compliance is checked by inspection and, if necessary, by testing the component according to the relevant IEC standard		N/A
14.23	Plug-in equipment: not cause overheating of the pins or impose undue strain		N/A
	Plugs with rating above 16 A and 250 V: not integral part of other equipment		N/A
	Tests for two-pole plugs, with or without earthing contact, with rating up to and including 16 A and 250 V (plug of equipment inserted into a fixed socket-outlet complying with this standard):		N/A
14.23.1	Socket-outlet connected to a supply voltage equal to 1,1 times the highest rated voltage of the equipment (V) .....		—
	Temperature rise of the pins after 1 h not exceed 45 K (K) .....		N/A
14.23.2	Additional torque applied to the socket-outlet in order to maintain the engagement face in the vertical plane not exceed 0,25 Nm (Nm) .....		N/A
14.24	Plugs can easily be withdrawn by hand from the relevant socket-outlets		N/A
	Gripping surfaces are so designed that the plug can be withdrawn without having to pull the flexible cable		N/A
14.25	Membranes in inlet openings of portable accessories: meet the requirements of 13.22 and 13.23		N/A
14.26	Rewirable portable socket-outlets which can be assembled and wired for normal use after their rear part has been fixed onto a surface comply both with the requirements for portable socket-outlets and with the following additional requirements for surface fixed socket-outlets:		N/A
	- provision for earthing: 11.2, 11.3, 11.6;		N/A
	- terminals and terminations: 12.2.1;		N/A

IEC 60884-1			
Clause	Requirement + Test	Result - Remark	Verdict
	- construction of fixed socket-outlets: Clause 13;		N/A
	- resistance to ageing, protection provided by enclosures, and resistance to humidity: 16.2.1, 16.2.2;		N/A
	- temperature rise: Clause 19;		N/A
	- mechanical strength: Clause 24;		N/A
	- resistance to heat: Clause 25;		N/A
	- creepage distances, clearances and distances through sealing compound: Clause 27;		N/A
	- resistance of insulating material to abnormal heat, to fire and to tracking: 28.1.1, glow-wire test		N/A

<b>15</b>	<b>INTERLOCKED SOCKET-OUTLETS</b>		N/A
	Socket-outlet interlocked with a switch:		N/A
	plug cannot be inserted into or completely withdrawn from the socket-outlet while the socket-contacts are live		N/A
	socket-contacts cannot be made live until a plug is almost completely in engagement		N/A

<b>16</b>	<b>RESISTANCE TO AGEING, PROTECTION PROVIDED BY ENCLOSURES, AND RESISTANCE TO HUMIDITY</b>		<b>P</b>
<b>16.1</b>	<b>Resistance to ageing</b>		<b>P</b>
	Accessories are resistant to ageing		<b>P</b>
	For accessories having a lid, the lid is closed during the test		<b>P</b>
	Portable socket-outlets: the plug of the same system having the same rated current as the socket-outlet inserted into the socket-outlet during the test		N/A
	Accessories subjected to a test in a heating cabinet at $(70 \pm 2) ^\circ\text{C}$ for seven days (168 h)		<b>P</b>
	After the tests, the specimens show:		
	- no crack visible with normal or corrected vision without additional magnification		<b>P</b>
	- no sticky or greasy material		<b>P</b>
	- no trace of cloth (forefinger pressed with 5 N)		<b>P</b>
	- no damage		<b>P</b>

IEC 60884-1			
Clause	Requirement + Test	Result - Remark	Verdict
	Portable socket-outlets: contact pressure of the contact assembly checked as specified in subclause 22.2 with the single-pin gauge		N/A
<b>16.2</b>	<b>Protection provided by enclosures</b>		<b>P</b>
	Enclosures provide a degree of protection in accordance with the IP designation of the accessory		P
<b>16.2.1</b>	<b>Protection against access to hazardous parts and against harmful effects due to ingress of solid foreign objects</b>		<b>P</b>
	Accessories and their enclosures provide a degree of protection against access to hazardous parts and against harmful effects due to ingress of solid foreign objects		P
	Fixed socket-outlets: mounted as in normal use on a vertical surface		P
	Flush-type and semi-flush type socket-outlets: mounted in an appropriate box according to the manufacturer's instructions		P
	Accessories with screwed glands or membranes fitted with flexible cables within the range specified in table 3:		N/A
	- largest cross-sectional area (mm <sup>2</sup> ); type of cable (table 17) .....		—
	- smallest cross-sectional area (mm <sup>2</sup> ); type of cable (table 17) .....		—
	Glands tightened with a torque equal to 2/3 of the torque applied during the test of 24.6 (Nm) .....		—
	Screws of the enclosure tightened with a torque equal to 2/3 of the torque given in table 6 (Nm) ..		—
<b>16.2.1.1</b>	<b>Protection against access to hazardous parts</b>		<b>P</b>
	Appropriate test performed as specified in IEC 60529 (see also clause 10)		
<b>16.2.1.2</b>	<b>Protection against harmful effects due to ingress of solid foreign objects</b>		<b>P</b>
	Appropriate test performed as specified in IEC 60529		P
	Test on accessories with IP5X (considered to be of category 2): dust not penetrated in a quantity to interfere with satisfactory operation or to impair safety		N/A
	Test on accessories with IP6X (considered to be of category 1): dust do not penetrate		N/A
<b>16.2.2</b>	<b>Protection against harmful effects due to ingress of water</b>		<b>N/A</b>

IEC 60884-1			
Clause	Requirement + Test	Result - Remark	Verdict
	Accessories and their enclosures provide a degree of protection against harmful effects due to ingress of water in accordance with their IP classification		N/A
	Appropriate test performed as specified in IEC 60529 under the following conditions:		N/A
	Flush-type and semi-flush type socket-outlets: fixed in a vertical test wall using an appropriate box according to the manufacturer's instructions		N/A
	Accessory suitable to be installed on a rough wall: test wall according to figure 15 is used		N/A
	Surface-type socket-outlets mounted as for normal use in a vertical position and fitted with cables (having conductors of the largest and smallest nominal cross-sectional area given in table 3) or conduits or both in accordance with the manufacturer's instructions:		N/A
	- largest cross-sectional area (mm <sup>2</sup> ); type of cable (table 17) .....		—
	- smallest cross-sectional area (mm <sup>2</sup> ); type of cable (table 17) .....		—
	Portable socket-outlets tested on a plain, horizontal surface in a position as in normal use and fitted with flexible cables (having conductors of the largest and smallest nominal cross-sectional area given in table 3) according to table 17:		N/A
	- largest cross-sectional area (mm <sup>2</sup> ); type of cable (table 17) .....		—
	- smallest cross-sectional area (mm <sup>2</sup> ); type of cable (table 17) .....		—
	Screws of enclosure tightened with a torque equal to 2/3 of the torque given in table 6 (Nm) .....		—
	Glands tightened with a torque equal to 2/3 of the torque applied during the test of 24.6 (Nm) .....		—
	Accessory with drain holes opened during the test: any accumulation of water proved by inspection		N/A
	Socket-outlets tested without a plug in engagement		N/A
	Plugs tested when in full engagement with:		N/A
	- a fixed socket-outlets		N/A
	- a portable socket-outlets		N/A
	of the same system and with the same degree of protection against harmful effects due to ingress of water		—
	Specimens withstand an electric strength test specified in 17.2 which is started within 5 min of completion of the IP test		N/A
<b>16.3</b>	<b>Resistance to humidity</b>		<b>P</b>

IEC 60884-1			
Clause	Requirement + Test	Result - Remark	Verdict
	Accessories proof against humidity which may occur in normal use		P
	Compliance checked by a humidity treatment carried out in a humidity cabinet containing air with relative humidity maintained between 91 % and 95 %		P
	Specimens kept in the cabinet for:		P
	- two days (48 h) for accessories having IPX0		P
	- seven days (168 h) for accessories having IP>X0		N/A
	After this treatment the specimens show no damage		P
<b>17</b>	<b>INSULATION RESISTANCE AND ELECTRIC STRENGTH</b>		
17.1	Insulation resistance measured 1 min after application of 500 V d.c.	See appended table 17.1	P
17.2	Electric strength: a.c. test voltage applied for 1 min	See appended table 17.2	P
<b>18</b>	<b>OPERATION OF EARTHING CONTACTS</b>		P
	Earthing contacts provide adequate contact pressure and not deteriorate in normal use		P
	Compliance checked by the tests of clauses 19 and 21		P
<b>19</b>	<b>TEMPERATURE RISE</b>		P
	Accessories constructed that they comply with the following temperature rise test		
	Non-rewirable accessories are tested as delivered		N/A
	In the case of multiple socket-outlets, the test is carried out on one socket-outlet of each type and current rating with the test current as specified in Table 20 passed through that one socket-outlet	See appended tables	N/A
	The temperature rise of the terminals, terminations and clamping units according to Figure 44 determined by means of thermocouples do not exceed 45 K	See appended tables	P
19.1	Socket-outlets and plugs are tested as follows:		
	Socket-outlets tested using a test plug with brass pins having the minimum specified dimensions	See appended table 19.1	P
	For this test the temperature rise is measured on the terminals and terminations.		P

IEC 60884-1			
Clause	Requirement + Test	Result - Remark	Verdict
	Plugs tested with clamping units having dimensions specified in Figure 44 fitted on each live pin and earthing pin, if any	See appended table 19.1	N/A
	Plugs having lateral earthing contacts and resilient earthing contacts tested using a fixed socket-outlet complying with the standard and having as near to-average characteristics as can be selected, but with minimum size of the earthing pin, if any	See appended table 19.1	N/A
19.2	Fixed socket-outlets of a socket-outlet and fused plug system are tested as follows:		N/A
	a) For a single socket-outlet the plug is inserted into the socket-outlet and 70 % of the test current is passed through the plug	See appended table 19.2	N/A
	The balance of the total test current is passed, simultaneously through a looped connection, connected to the socket-outlet terminals		N/A
	The total nominal load on the supply cable is passed for 60 min	See appended table 19.2	N/A
	b) For a multiple socket-outlet a plug is inserted into one socket-outlet and 70 % of the test current is passed	See appended table 19.2	N/A
	A second plug is inserted into another socket-outlet and the balance of the total test current is passed simultaneously through this plug.....:	See appended table 19.2	N/A
	The total nominal load on the supply cable is passed for 60 min.	See appended table 19.2	N/A
19.3	Portable socket-outlets and rewirable plugs with incorporated components are tested by the following two tests:		N/A
	– with a current which is equal to the test current as indicated in Table 20, for Clause 19	See appended table 19.3	N/A
	– with a current which is equal to the rated current of the portable accessory or the rated current of the component(s), whichever is the lower	See appended table 19.3	N/A
	Non-rewirable plugs with incorporated components are tested by the following two tests:		N/A
	– with a current which is equal to the test current for the combination of the plug and the cable as indicated in Table 20, for Clause 19	See appended table 19.3	N/A
	– with a current which is equal to the test current for the combination of the plug and the cable as indicated in Table 20, for Clause 21, or the rated current of the component(s), whichever is the lower	See appended table 19.3	N/A
<b>20</b>	<b>BREAKING CAPACITY</b>		<b>P</b>

IEC 60884-1			
Clause	Requirement + Test	Result - Remark	Verdict
	Accessories have adequate breaking capacity		P
	Compliance checked by testing:		
	- socket-outlets;	See appended table 20	P
	- plugs with pins which are not solid	See appended table 20	N/A
	Multiple socket-outlets: test carried out on one socket-outlet of each type and current rating		N/A
	During the test: no sustained arcing occur		P
	After the test:		
	- specimens show no damage impairing their further use;		P
	- entry holes for the pins not show any damage which may impair the safety		P

<b>21</b>	<b>NORMAL OPERATION</b>		P
	Accessories withstand without excessive wear or other harmful effect, the mechanical, electrical and thermal stresses occurring in normal use		P
	Compliance checked by testing:		
	- socket-outlets;	See appended table 21	P
	- plugs with resilient earthing socket-contacts;	See appended table 21	N/A
	- plugs with pins which are not solid	See appended table 21	N/A
	Test performed according to the procedure specified in Figure 43; point of Figure 43 at which the test program has begun (1, 2, 3) .....		—
	Test current passed:		
	- during each insertion and withdrawal of the plug ( $I_n \leq 16A$ )		P
	- during alternate insertion and withdrawal, the other insertion and withdrawal being made without current flowing ( $I_n > 16A$ )		N/A
	Multiple socket-outlets: test carried out on one socket-outlet of each type and current rating		N/A
	During the test: no sustained arcing occur		P
	After the test the specimens do not show:		
	- wear impairing their further use;		P
	- deterioration of enclosures, insulating lining or barriers;		P
	- damage to the entry holes for the pins, that might impair proper working;		P



IEC 60884-1			
Clause	Requirement + Test	Result - Remark	Verdict
	- loosening of electrical or mechanical connections;		P
	- seepage of sealing compound		P
	Shuttered socket-outlets: gauges of figure 9 and 10 applied to the entry holes corresponding to live contacts do not touch live parts when they remain under the relevant forces	See appended table 21	P
	Temperature-rise test (requirements of clause 19)	See appended table 21	P
	Electric strength (sub-clause 17.2)	See appended table 21	P
	Pins which are not solid: test according to 14.2		P

<b>22</b>	<b>FORCE NECESSARY TO WITHDRAW THE PLUG</b>		P
	Construction of accessory does allow the easy insertion and withdrawal of the plug, and prevent the plug from working out of the socket-outlet in normal use		P
<b>22.1</b>	<b>Verification of the maximum withdrawal force</b>	See appended table 22	P
<b>22.2</b>	<b>Verification of the minimum withdrawal force</b>	See appended table 22	P

<b>23</b>	<b>FLEXIBLE CABLES AND THEIR CONNECTIONS</b>		N/A
23.1	Rewirable plugs and rewirable portable socket-outlets are provided with a cord anchorage		N/A
	Sheath of flexible cable is clamped within the cord anchorage		N/A
	In non-rewirable plugs and non-rewirable portable socket-outlets the cable is maintained in position and the terminations are relieved from strain and twisting		N/A
	Sheath of flexible cable is maintained inside the accessory		N/A
23.2	Pull and torque test		N/A
	Non-rewirable accessories:		N/A
	After the test: displacement $\leq 2$ mm	See appended table 23.2	N/A
	No break in the electrical connections		N/A
	Rewirable accessories:		N/A
	After the test: displacement $\leq 2$ mm	See appended table 23.2	N/A
	End of conductors not have moved noticeably in the terminals		N/A

IEC 60884-1			
Clause	Requirement + Test	Result - Remark	Verdict
	Rewirable accessories having rated current up to and including 16 A:		N/A
	Suitable for fitting with the appropriate cable as shown in table 19		N/A
	Type of flexible cable; number of conductors and nominal cross-sectional area (mm <sup>2</sup> ).....:		—
23.3	Non-rewirable plugs and non-rewirable portable socket-outlets are provided with a flexible cable complying with IEC 60227 or IEC 60245		N/A
	Flexible cables have the same number of conductors as there are poles in the plug or socket-outlet		N/A
	Conductor connected to the earthing contact is identified by the colour combination green/yellow		N/A
23.4	Non-rewirable plugs and non-rewirable portable socket-outlets: designed that the flexible cable is protected against excessive bending		N/A
	Guards of insulating material and fixed in reliable manner		N/A
	Flexing test (10.000 flexings)		N/A
	During the test: no interruption of the test current and no short-circuit between conductors	See appended table 23.4	N/A
	After the test: guard no separated from the body, insulation shows no sign of abrasion or wear, broken strands become no accessible	See appended table 23.4	N/A

<b>24</b>	<b>MECHANICAL STRENGTH</b>		P
	Accessories, surface mounting boxes, screwed glands and shrouds have adequate mechanical strength		P
24.1	Fixed socket-outlets, portable multiple socket-outlets and surface-type mounting boxes: hammer test described in IEC 60068-2-75 (test EHA), equivalent mass of 250 g	See appended table 24.1	P
	After the test: no damage, live parts no become accessible		P
24.2	Portable single socket-outlets and plugs: subjected to test Ec: Rough handling shocks, primarily for equipment-type specimens, procedure 2 of IEC 60068-2-31 (tumbling barrel); number of falls.....:		N/A
	After the test:		
	- no part become detached or loosened;		N/A

IEC 60884-1			
Clause	Requirement + Test	Result - Remark	Verdict
	- pins no become so deformed that the plug cannot be introduced into a socket-outlet and also fails to comply with the requirements of 9.1 and 10.3;		N/A
	- pins no turn when a torque of 0,4 Nm is applied for 1 min in each direction		N/A
	The shutters of socket-outlets tested again according to Clause 21, from paragraph 19 up to paragraph 24 (only the tests of shutters)		N/A
24.3	Main parts of surface-type socket-outlets: first fixed to a cylinder of rigid steel sheet and then fixed to a flat steel sheet		N/A
	During and after the tests: no damage		N/A
24.4	Portable single socket-outlets, multiple socket-outlets and plugs (elastomeric or thermoplastic material): impact test, weight (1000 ± 2) g, height 100 mm (apparatus shown in fig. 27)		N/A
	Specimens placed in a freezer at (-15 °C ± 2) °C for at least 16 h. After the test: no damage		N/A
24.5	Portable single socket-outlets and plugs (elastomeric or thermoplastic material): compression test, 300 N for 1 min, position a) and b) (apparatus shown in fig. 8)		N/A
	After the test: no damage		N/A
24.6	Screwed glands of accessories having IP>20: torque test (1 min)		N/A
	- diameter of test rod (mm) .....		—
	- type of material (metal / moulded) .....		—
	- torque (Nm) .....		—
	After the test: no damage of glands and enclosures of the specimens		N/A
24.7	Plug pins provided with insulating sleeves: 20000 movements, 4 N (apparatus shown in fig. 28)		N/A
	After the test: no damage of pins, insulating sleeve not have punctured or rucked up		N/A
24.8	Shuttered socket-outlets: mechanical test carried out on specimens submitted to the normal operation test according to clause 21		P
	Force (40 N / 75 N) applied for 1 min against the shutter of an entry hole by means of one pin (N) .:	40	—
	Pin did not come in contact with live parts		P
	After the test: no damage		P
24.9	Mechanical test for multiple portable socket-outlet: 8 falls on concrete floor with the specimens arranged as shown in figure 29		N/A
	Rewirable multiple socket-outlets: flexible cable of the smallest cross-sectional area specified in table 3 .....		—

IEC 60884-1			
Clause	Requirement + Test	Result - Remark	Verdict
	After the test: no damage, no part have become detached or loosened		N/A
	Accessories having IP>X0 submitted again to the tests as specified in 16.2		N/A
	The shutters of multiple socket-outlets tested again according to Clause 21, from paragraph 19 up to paragraph 24 (only the tests of shutters)		N/A
24.10	Plugs: pull test to verify the fixation of pins in the body of the plug (new specimens)		N/A
	Maximum withdrawal force (table 16) applied for 1 min on each pin in turn, after the specimen has been placed at $(70 \pm 2) ^\circ\text{C}$ for 1 h (N) .....		—
	After the test: displacement of pins in the body of the plug $\leq 1$ mm (mm) .....		N/A
24.11	Barriers of portable socket-outlets having means for suspension on a mounting surface:		N/A
	Force applied for 10 s against the barrier by means of a cylindrical steel rod (1,5 times the maximum plug withdrawal force in 22.1, table 16) (N) .....		—
	Rod did not pierce the barrier		N/A
24.12	Portable socket-outlets having means for suspension on a mounting surface (pull test):		N/A
	Pull applied to the supply flexible cable for 10 s (force prescribed in 23.2 for checking the flexible cable anchorage) (N) .....		—
	During the test: no break of the means for suspension on a mounting surface		N/A
24.13	Portable socket-outlets having means for suspension on a mounting surface (pull test):		N/A
	Pull applied to the engagement face of the socket-outlet for 10 s (maximum withdrawal force specified, for the corresponding plug, in table 16) (N) .....		—
	During the test: no break of the means for suspension on a mounting surface		N/A
24.14	Forces necessary to retain or remove covers, cover-plates or parts of them (accessibility with the test finger to live parts)		N/A
24.14.1	Verification of the retention of covers or cover-plates (fixed socket-outlets)		N/A
	Force (40 N / 80 N) applied for 1 min perpendicular to the mounting surface (N) .....		—
	Covers or cover-plates did not come off		N/A

IEC 60884-1			
Clause	Requirement + Test	Result - Remark	Verdict
	Test repeated on new specimens with a sheet of hard material, (1 ± 0,1) mm thick, fitted around the supporting frame (fig. 31): covers or cover-plates did not come off		N/A
	After the test: no damage		N/A
24.14.2	Verification of the removal of covers or cover-plates (fixed socket-outlets)		N/A
	Force not exceeding 120 N applied 10 times perpendicular to the mounting / supporting surface: covers or cover-plates came off		N/A
	Test repeated on new specimens with a sheet of hard material, (1 ± 0,1) mm thick, fitted around the supporting frame (fig. 31): covers or cover-plates came off		N/A
	After the test: no damage		N/A
24.14.3	Verification of the retention of covers or cover-plates (plugs and portable socket-outlets)		N/A
	Force 80 N applied for 1 min perpendicular to the mounting surface: covers, cover-plates or parts of them did not come off		N/A
	Test repeated with a force of 120 N:		N/A
	Rewirable plugs and rewirable portable socket-outlets: covers, cover-plates or parts of them came off but the specimen showed no damage		N/A
	Non-rewirable, non-moulded-on accessories: covers, cover-plates or parts of them came off but the accessories were permanently useless according to 14.1		N/A
24.15	Force necessary for covers or cover-plates to come off or not to come off (accessibility with the test finger to non-earthed metal parts separated from live parts by creepage distances and clearances according to table 23)		P
24.14.1	Verification of the non-removal of covers or cover-plates		P
	Force (10 N / 20 N) applied for 1 min in direction perpendicular to the mounting surface (N) .....	20N	—
	Covers or cover-plates did not come off		P
	Test repeated on new specimens with a sheet of hard material, 1 mm ± 0,1 mm thick, fitted around the supporting frame (fig. 31): covers or cover-plates did not come off		P
	After the test: no damage		P
24.14.2	Verification of the removal of covers or cover-plates		P
	Force not exceeding 120 N applied 10 times in direction perpendicular to the mounting / supporting surface: covers or cover-plates came off		P

IEC 60884-1			
Clause	Requirement + Test	Result - Remark	Verdict
	Test repeated on new specimens with a sheet of hard material, 1 mm ± 0,1 mm thick, fitted around the supporting frame (fig. 31): covers or cover-plates came off		P
	After the test: no damage		P
24.16	Force necessary for covers or cover-plates to come off or not to come off (accessibility to insulating parts, earthed metal parts, live parts of SELV ≤ 25 V a.c. or metal parts separated from live parts by creepage distances twice those according to table 23)		N/A
24.14.1	Verification of the non-removal of covers or cover-plates		N/A
	Force 10 N applied for 1 min in direction perpendicular to the mounting surface: covers or cover-plates did not come off		N/A
	Test repeated on new specimens with a sheet of hard material, 1 mm ± 0,1 mm thick, fitted around the supporting frame (fig. 31): covers or cover-plates did not come off		N/A
	After the test: no damage		N/A
24.14.2	Verification of the removal of covers or cover-plates		N/A
	Force not exceeding 120 N applied 10 times in direction perpendicular to the mounting / supporting surface: covers or cover-plates came off		N/A
	Test repeated on new specimens with a sheet of hard material, 1 mm ± 0,1 mm thick, fitted around the supporting frame (fig. 31): covers or cover-plates came off		N/A
	After the test: no damage		N/A
24.17	Test with gauge of figure 7 applied according to figure 9 for verification of the outline of covers or cover-plates: distances between face C of gauge and outline of side under test, not decrease .....	complying	—
24.18	Test with gauge according to figure 5 applied as shown in figure 11 (1 N): gauge not enter more than 1mm .....	complying	—
24.19	Shroud of portable socket-outlets: compression test (20 ± 2) N at (25 ± 5) °C by means of the apparatus shown in figure 38		N/A
	After 1 min and while the shrouds are still under pressure the dimensions did comply with the appropriate standard sheet		N/A
	Test repeated with the specimen rotated 90 °		N/A
<b>25</b>	<b>RESISTANCE TO HEAT</b>		<b>P</b>

IEC 60884-1			
Clause	Requirement + Test	Result - Remark	Verdict
25.1	Specimens kept for 1 h in a heating cabinet at $(100 \pm 2)$ °C for 1 h		P
	During the test: no change impairing their further use and sealing compound, if any, not flow		P
	After the test:		
	- no access to live parts with probe B of IEC 61032 applied with a force not exceeding 5 N		P
	- markings still legible		P
25.2	Parts of insulating material necessary to retain current-carrying parts and parts of the earthing circuit in position, as well as parts of the front surface zone, 2 mm wide, surrounding the phase and neutral pin entry holes: ball-pressure test at $(125 \pm 2)$ °C for 1 h	See appended table 25.2	P
25.3	Parts of insulating material not necessary to retain current-carrying parts and parts of the earthing circuit in position, even though in contact with them: ball-pressure test (1 h)	See appended table 25.3	P
25.4	Portable accessories: compression test (20 N) at $(80 \pm 2)$ °C for 1 h by means of the apparatus shown in figure 38		N/A
	After the test: no damage		N/A

<b>26</b>	<b>SCREWS, CURRENT-CARRYING PARTS AND CONNECTIONS</b>		P
26.1	Connections withstand mechanical stresses		N/A
	Thread-forming or thread-cutting screws used only if supplied together with the piece in which they are intended to be inserted		N/A
	Thread-cutting screws intended to be used during installation: captive		N/A
	Screws or nuts which transmit contact pressure made of metal and in engagement with a metal thread		N/A
	Threaded part torque test		N/A
26.2	Screws in engagement with a thread of insulating material: correct introduction into the screw hole or nut ensured		N/A
26.3	Contact pressure: not transmitted through insulating material other than ceramic, pure mica or other material no less suitable unless there is sufficient resiliency in metallic parts		P
	Connections made by insulation piercing of tinsel cord reliable		N/A

IEC 60884-1			
Clause	Requirement + Test	Result - Remark	Verdict
26.4	Screws and rivets locked against loosening and/or turning		N/A
26.5	Current-carrying parts (including earthing terminals) have mechanical strength, electrical conductivity and resistance to corrosion adequate:		
	- copper;		N/A
	- alloy with at least 58 % copper for parts made from cold-rolled sheet or with at least 50 % copper for other parts;		P
	- stainless steel with at least 13 % chromium and not more than 0,09 % carbon		N/A
	- steel with electroplated coating of zinc (ISO 2081): service condition ISO no. (1/2/3); IP (X0/X4/X5); thickness (µm) .....		N/A
	- steel with electroplated coating of nickel and chromium (ISO 1456): service condition ISO no. (2/3/4); IP (X0/X4/X5); thickness (µm) .....		N/A
	- steel with electroplated coating of tin (ISO 2093): service condition ISO no. (2/3/4); IP (X0/X4/X5); thickness (µm) .....		N/A
	Current-carrying parts subjected to mechanical wear: not of steel with electroplated coating		N/A
	Metals having a great difference of electrochemical potential: not used in contact with each other		N/A
26.6	Contacts subjected to a sliding action are of metal resistant to corrosion		N/A
26.7	Thread-forming screws and thread-cutting screws are not used for the connection of current-carrying parts		N/A
	Thread-forming screws and thread-cutting screws used to provide earthing connection: it is not necessary to disturb the connection and at least two screws are used for each connection		N/A

<b>27</b>	<b>CREEPAGE DISTANCES, CLEARANCES AND DISTANCES THROUGH SEALING COMPOUND</b>		P
27.1	Creepage distances, clearances and distances through sealing compound are not less than the values shown in table 23	See appended table 27.1	P
27.2	Insulating sealing compound does not protrude above the edge of the cavity in which it is contained		P
27.3	Surface-type socket-outlets do not have bare current-carrying strips at the back		P



IEC 60884-1			
Clause	Requirement + Test	Result - Remark	Verdict
<b>28</b>	<b>RESISTANCE OF INSULATING MATERIAL TO ABNORMAL HEAT, TO FIRE AND TO TRACKING</b>		P
<b>28.1</b>	<b>Resistance to abnormal heat and to fire</b>		P
<b>28.1.1</b>	<b>Glow-wire test according to IEC 60695-2-10 and IEC 60695-2-11</b>	See appended table 28.1.1	P
28.1.2	Plugs with pins provided with insulating sleeves:		N/A
	Test temperature maintained for 3 h by means of the apparatus shown in figure 40 at $(120 \pm 5) ^\circ\text{C}$ / $(180 \pm 5) ^\circ\text{C}$ .....		—
	Impact test according to sub-clause 30.4 (mass 100 g, height 100 mm, 4 impacts): no cracks of the insulating sleeves		N/A
<b>28.2</b>	<b>Resistance to tracking</b>		N/A
	Parts of insulating material retaining live parts in position of accessories having $\text{IP}>\text{X0}$ : of material resistant to tracking		N/A
	Tracking test at 175 V with solution A of IEC 60112	See appended table 28.2	N/A
<b>29</b>	<b>RESISTANCE TO RUSTING</b>		P
	Ferrous parts protected against rusting		P
	Test made after having removed all grease using a suitable degreasing agent: 10 min 10 % solution of ammonium chloride, 10 min in a box with air saturated with moisture and 10 min at $(100 \pm 5) ^\circ\text{C}$ :		P
	No signs of rust		P
<b>30</b>	<b>ADDITIONAL TESTS ON PINS PROVIDED WITH INSULATING SLEEVES</b>		N/A
<b>30.1</b>	<b>Pressure test at high temperature</b>		N/A
	Apparatus shown in figure 41, with the test specimen in position, maintained for 2 h at $(200 \pm 5) ^\circ\text{C}$ . Force applied through the blade: 2,5 N		N/A
	Thickness of the insulation measured: before the test (mm); after the test (mm) .....		—
	Thickness remaining at the point of impression is not reduced by more than 50 % of its original value measured at the start of the test: percentage value (%) .....		N/A
<b>30.2</b>	<b>Static damp heat test</b>		N/A
	Set of 3 specimens submitted to two damp heat cycles in accordance with IEC 60068-2-30 (variant 2 with a temperature of $40 ^\circ\text{C}$ ).		N/A

IEC 60884-1			
Clause	Requirement + Test	Result - Remark	Verdict
	After the test:		N/A
	- insulation resistance and electric strength test (clause 17)		N/A
	- abrasion test (sub-clause 24.7)		N/A
<b>30.3</b>	<b>Test at low temperature</b>		N/A
	Set of 3 specimens maintained at (-15 °C ± 2) °C for 24 h		N/A
	After the test:		N/A
	- insulation resistance and electric strength test (clause 17)		N/A
	- abrasion test (sub-clause 24.7)		N/A
<b>30.4</b>	<b>Impact test at low temperature</b>		N/A
	Specimens maintained at (-15 °C ± 2) °C for 24 h subjected to 4 impacts (mass 100 g, height 100 mm) by means of the apparatus shown in figure 42 rotating the specimen through 90 ° between impacts		N/A
	After the test: no crack of the insulating sleeves		N/A

<b>12.2.5</b>	<b>TABLE: test with apparatus shown in figure 11 (screw-type terminals)</b>				N/A
	rated current (A) .....	:	N/A		—
	type of conductors .....	:	rigid solid / rigid stranded / flexible		—
	smallest/largest cross-sectional area per table 3 (mm <sup>2</sup> ) .....	:	N/A		—
	number of conductors .....	:	N/A		—
	nominal diameter of thread (mm); torque per table 6 (Nm) .....	:	N/A		—
Cross-sectional area (mm <sup>2</sup> )	Diameter of bushing hole per table 9 (mm)	Height H per table 9 (mm)	Mass (kg)	Remarks	
N/A	N/A	N/A	N/A	N/A	
N/A	N/A	N/A	N/A	N/A	
<b>supplementary information:</b>					

<b>12.2.6</b>	<b>TABLE: pull test (screw-type terminals)</b>				N/A
	rated current (A) .....	:	N/A		—
	smallest/largest cross-sectional area per table 3 (mm <sup>2</sup> ) .....	:	N/A		—
	nominal diameter of thread (mm); torque 2/3 per table 6 (Nm) .....	:	N/A		—
Cross-sectional area (mm <sup>2</sup> )	Number of conductors	Type of conductors (rigid solid / rigid stranded / flexible)	Pull per table 4 applied for 1 min (N)	Remarks	
N/A	N/A	N/A	N/A	N/A	
N/A	N/A	N/A	N/A	N/A	
<b>supplementary information:</b>					

<b>12.2.7</b>	<b>TABLE: tightening test (screw-type terminals)</b>				N/A
	rated current (A) .....	:	N/A		—
	nominal diameter of thread (mm); torque 2/3 per table 6 (Nm) .....	:	N/A		—
Largest cross-sectional area per table 3 (mm <sup>2</sup> )	Permissible number of conductors <sup>(1)</sup>	Type of conductors (rigid solid / rigid stranded / flexible)	Number of wires and nominal diameter of wires per table 5	Remarks	
N/A	N/A	N/A	N/A	N/A	
N/A	N/A	N/A	N/A	N/A	
N/A	N/A	N/A	N/A	N/A	
<b>supplementary information:</b>					
<sup>(1)</sup> terminals intended for looping-in 2 or 3 conductors					

<b>12.3.10</b>	<b>TABLE: mechanical strength test (screwless-type terminals)</b>			<b>P</b>	
	rated current (A) .....	16		—	
	largest/smallest cross-sectional area per table 7 (mm <sup>2</sup> ) .....	2,5 / 1,5		—	
Number of connection (after that conductor subjected to a pull of 30 N for 1 min) / disconnection	Type of conductor (solid / rigid stranded / flexible)	Cross-sectional area (mm <sup>2</sup> )	Remarks		
5	Solid	2,5	P		
5	Solid	1,5	P		
1	Stranded	2,5	P		
1	Stranded	1,5	P		
5	Flexible	2,5	P		
5	Flexible	1,5	P		
<b>TABLE: test with apparatus shown in figure 11</b>					
Cross-sectional area (mm <sup>2</sup> )	Type of conductor (solid / rigid stranded / flexible)	Diameter of bushing hole per table 9 (mm)	Height H per table 9 (mm)	Mass (kg)	Remarks
2,5	Solid	9,5	280	0,7	P
1,5	Solid	6,5	260	0,4	P
2,5	Stranded	9,5	280	0,7	P
1,5	Stranded	6,5	260	0,4	P
2,5	Flexible	9,5	280	0,7	P
1,5	Flexible	6,5	260	0,4	P
<b>supplementary information:</b>					
<b>12.3.11</b>	<b>TABLE: electrical and thermal strength test (screwless-type terminals)</b>			<b>P</b>	
<b>Test a)</b>	<b>Test carried out for 1 h connecting rigid solid conductors:</b>			<b>P</b>	
	test current per table 10 (A) .....	22		—	
	nominal cross-sectional area (mm <sup>2</sup> ) .....	2,5		—	
Screwless terminal number	Voltage drop (mV)		Required voltage drop (mV)		
1	10,6		≤ 15		
2	9,1		≤ 15		
3	9,0		≤ 15		
4	10,4		≤ 15		
5	8,7		≤ 15		
<b>Test b)</b>	<b>Temperature cycles test carried out on terminals subjected to Test a):</b>			<b>P</b>	
	test current per table 10 (A) .....	22		—	

	nominal cross-sectional area (mm <sup>2</sup> ) .....	2,5				—
	allowed voltage drop (mV) .....	≤ 22,5 mV or 2 times 24 <sup>th</sup> cycle value (mV)				—
<b>Screwless terminal number</b>	<b>1</b>	<b>2</b>	<b>3</b>	<b>4</b>	<b>5</b>	<b>Remarks</b>
voltage drop after 24 <sup>th</sup> cycle	10,5	7,1	9,9	8,1	9,8	P
voltage drop after 48 <sup>th</sup> cycle	10,5	7,1	9,9	8,1	9,7	P
voltage drop after 72 <sup>nd</sup> cycle	10,5	7,1	9,9	8,1	9,8	P
voltage drop after 96 <sup>th</sup> cycle	10,5	7,1	9,9	8,1	9,8	P
voltage drop after 120 <sup>th</sup> cycle	10,6	7,1	10,0	8,1	9,8	P
voltage drop after 144 <sup>th</sup> cycle	10,6	7,1	10,0	8,1	9,8	P
voltage drop after 168 <sup>th</sup> cycle	10,6	7,1	10,0	8,1	9,9	P
voltage drop after 192 <sup>nd</sup> cycle	10,6	7,2	10,0	8,1	9,9	P
<b>12.3.10</b>	<b>TABLE: mechanical strength test (screwless-type terminals)</b>					<b>P</b>
	rated current (A) .....	16				—
	largest/smallest cross-sectional area per table 7 (mm <sup>2</sup> ) .....	2,5 / 1,5				—
<b>Number of connection (after that conductor subjected to a pull of 30 N for 1 min) / disconnection</b>	<b>Type of conductor (solid / rigid stranded / flexible)</b>		<b>Cross-sectional area (mm<sup>2</sup>)</b>		<b>Remarks</b>	
5	Solid		2,5		P	
5	Solid		1,5		P	
1	Stranded		2,5		P	
1	Stranded		1,5		P	
5	Flexible		2,5		P	
5	Flexible		1,5		P	
	<b>TABLE: test with apparatus shown in figure 11</b>					<b>P</b>
<b>Cross-sectional area (mm<sup>2</sup>)</b>	<b>Type of conductor (solid / rigid stranded / flexible)</b>	<b>Diameter of bushing hole per table 9 (mm)</b>	<b>Height H per table 9 (mm)</b>	<b>Mass (kg)</b>	<b>Remarks</b>	
2,5	Solid	9,5	280	0,7	P	
1,5	Solid	6,5	260	0,4	P	
2,5	Stranded	9,5	280	0,7	P	
1,5	Stranded	6,5	260	0,4	P	
2,5	Flexible	9,5	280	0,7	P	
1,5	Flexible	6,5	260	0,4	P	
<b>supplementary information:</b>						
<b>12.3.12</b>	<b>TABLE: deflection test (principle of test apparatus shown in figure 12a)</b>					<b>P</b>

	<b>Test carried out connecting rigid solid copper conductors:</b>						<b>P</b>
	test current (A) (equal rated current) .....					<b>16</b>	—
	required voltage drop (mV) .....					<b>≤ 25 mV</b>	—
<b>Type of conductor</b>	<b>Smallest</b>			<b>Largest</b>			<b>Remarks</b>
cross-sectional area per table 11 (mm <sup>2</sup> )	1,5			2,5			P
force per table 12 (N)	0,5			1,0			P
screwless terminal number	<b>1</b>	<b>2</b>	<b>3</b>	<b>1</b>	<b>2</b>	<b>3</b>	
starting point (X = deflection original point)	<b>X</b>	<b>X+10°</b>	<b>X+20°</b>	<b>X</b>	<b>X+10°</b>	<b>X+20°</b>	
voltage drop 1 <sup>st</sup> deflection (mV)	7,4	6,6	6,6	8,3	7,1	6,3	P
voltage drop 2 <sup>nd</sup> deflection (mV)	8,2	8,7	6,9	7,1	8,8	6,9	P
voltage drop 3 <sup>rd</sup> deflection (mV)	7,7	7,7	8,1	6,2	7,5	6,9	P
voltage drop 4 <sup>th</sup> deflection (mV)	6,7	7,0	7,5	5,8	7,5	6,8	P
voltage drop 5 <sup>th</sup> deflection (mV)	6,7	6,9	6,4	7,1	7,7	6,7	P
voltage drop 6 <sup>th</sup> deflection (mV)	7,2	8,0	6,6	7,2	8,4	7,0	P
voltage drop 7 <sup>th</sup> deflection (mV)	9,7	9,8	6,9	7,5	7,9	8,5	P
voltage drop 8 <sup>th</sup> deflection (mV)	7,5	7,7	9,1	9,0	7,2	9,6	P
voltage drop 9 <sup>th</sup> deflection (mV)	6,2	6,7	7,1	9,1	6,8	6,7	P
voltage drop 10 <sup>th</sup> deflection (mV)	5,9	6,2	6,5	6,8	6,0	5,7	P
voltage drop 11 <sup>th</sup> deflection (mV)	6,1	6,4	6,4	6,5	5,9	5,8	P
voltage drop 12 <sup>th</sup> deflection (mV)	5,7	8,3	6,8	7,4	7,3	5,7	P
<b>supplementary information:</b>							

<b>14.22</b>	<b>TABLE: Components</b>					<b>N/A</b>
<b>Object / part No.</b>	<b>Manufacturer/ trademark</b>	<b>Type / model</b>	<b>Technical data</b>	<b>Standard</b>	<b>Mark(s) of conformity<sup>1)</sup></b>	
N/A	N/A	N/A	N/A	N/A	N/A	
<b>- Description:</b>						
N/A	N/A	N/A	N/A	N/A	N/A	
N/A	N/A	N/A	N/A	N/A	N/A	
N/A	N/A	N/A	N/A	N/A	N/A	
<b>- Description:</b>						
N/A	N/A	N/A	N/A	N/A	N/A	
N/A	N/A	N/A	N/A	N/A	N/A	
N/A	N/A	N/A	N/A	N/A	N/A	
N/A	N/A	N/A	N/A	N/A	N/A	

<b>- Description:</b>					
N/A	N/A	N/A	N/A	N/A	N/A
N/A	N/A	N/A	N/A	N/A	N/A
N/A	N/A	N/A	N/A	N/A	N/A
<b>Supplementary information:</b>					
1) Provided evidence ensures the agreed level of compliance. See OD-CB2039.					

17.1	<b>TABLE: insulation resistance</b>			P
Item per 17.1	test voltage applied between:	measured (MΩ)	required (MΩ)	
21-0709	Between all poles connected together and the body	>1000	> 5	
21-0709	Between each pole in turn and all other	>1000	> 5	
21-0710	Between all poles connected together and the body	>1000	> 5	
21-0710	Between each pole in turn and all other	>1000	> 5	
21-0711	Between all poles connected together and the body	>1000	> 5	
21-0711	Between each pole in turn and all other	>1000	> 5	
supplementary information:				

17.2	<b>TABLE: electric strength</b>			P
	rated voltage (V) .....	250		—
item per 17.1	test voltage applied between:	test voltage (V)	flashover / breakdown (Yes/No)	
21-0709	Between all poles connected together and the body	2000	No	
21-0709	Between each pole in turn and all other	2000	No	
21-0710	Between all poles connected together and the body	2000	No	
21-0710	Between each pole in turn and all other	2000	No	
21-0711	Between all poles connected together and the body	2000	No	
21-0711	Between each pole in turn and all other	2000	No	
supplementary information:				

<b>19.1</b>	<b>TABLE: temperature rise test for socket-outlets and plugs</b>			<b>P</b>
	rated current of accessory (A) .....	16		—
	type of accessory (non-rewirable / rewirable) .....	rewirable		—
	nominal cross-sectional area per table 15 (mm <sup>2</sup> ) :	2,5		—
	type of conductors (rigid solid / rigid stranded / flexible).....	Rigid solid		—
	nominal diameter of thread (mm); torque 2/3 of that specified in 12.2.8 (Nm.....)	N/A		—

specimen	type of flexible cable <sup>(1)</sup>	number of conductors and nominal cross-sectional area (mm <sup>2</sup> ) <sup>(1)</sup>	test circuit (L-L/L-N/L-E)	test current (table 20) for 1 h (A)	measured $\Delta T$ (K)	allowed $\Delta T$ (K)	$\Delta T$ of external parts of insulating material (25.3)(K)
21-0709	-	2,5	L-N	22	35,7	45	4,4
21-0710	-	2,5	L-N	22	34,2	45	4,1
21-0711	-	2,5	L-N	22	33,5	45	4,2
21-0709	-	2,5	L-E	22	41,1	45	3,8
21-0710	-	2,5	L-E	22	40,6	45	3,5
21-0711	-	2,5	L-E	22	41,8	45	3,6
21-0709	-	2,5	E	22	25,7	45	2,9
21-0710	-	2,5	E	22	26,1	45	2,7
21-0711	-	2,5	E	22	28,4	45	2,8

**supplementary information:**<sup>(1)</sup> Non-rewirable accessories

<b>19.2</b>	<b>TABLE: temperature rise test for fixed socket-outlets of a socket-outlet and fused plug system</b>								<b>N/A</b>
	rated current of accessory (A) .....						N/A	—	
	type of accessory (non-rewirable / rewirable) ....						N/A	—	
	nominal cross-sectional area per table 15 (mm <sup>2</sup> ) :						N/A	—	
	type of conductors (rigid solid / rigid stranded / flexible) .....						N/A	—	
	nominal diameter of thread (mm); torque 2/3 of that specified in 12.2.8 (Nm .....						N/A	—	
	<b>Test a) single socket-outlet</b>								
specimen	type of flexible cable (1)	number of conductors and nominal cross-sectional area (mm <sup>2</sup> ) (1)	test circuit (L-L/L-N/L-E)	70% of test current (table 20) for 1 h (socket-outlet) (A)	30% of test current (table 20) for 1 h (looped) (A)	test current (table 20) for 1 h (supply cable) (A)	measured $\Delta T$ (K)	allowed $\Delta T$ (K)	$\Delta T$ of external parts of insulating material (25.3)(K)
N/A	N/A	N/A	N/A	N/A	N/A	N/A	N/A	N/A	N/A
N/A	N/A	N/A	N/A	N/A	N/A	N/A	N/A	N/A	N/A
N/A	N/A	N/A	N/A	N/A	N/A	N/A	N/A	N/A	N/A
supplementary information:									
<sup>(1)</sup> Non-rewirable accessories									
	<b>Test b) multiple socket-outlet</b>								



specimen	type of flexible cable <sup>(1)</sup>	number of conductors and nominal cross-sectional area (mm <sup>2</sup> ) <sup>(1)</sup>	test circuit (L-L/L-N/L-E)	70% of test current (table 20) for 1 h (1 <sup>st</sup> socket-outlet) (A)	30% of test current (table 20) for 1 h (2 <sup>nd</sup> socket) (A)	test current (table 20) for 1 h (supply cable) (A)	measured ΔT (K)	allowed ΔT (K)	ΔT of external parts of insulating material (25.3)(K)
N/A	N/A	N/A	N/A	N/A	N/A	N/A	N/A	N/A	N/A
N/A	N/A	N/A	N/A	N/A	N/A	N/A	N/A	N/A	N/A
N/A	N/A	N/A	N/A	N/A	N/A	N/A	N/A	N/A	N/A
supplementary information: <sup>(1)</sup> Non-rewirable accessories									

19.3	<b>TABLE: temperature rise test for plugs and portable socket-outlets with incorporated components</b>								N/A
	rated current of accessory (A) .....						N/A	—	
	type of accessory (non-rewirable / rewirable) ....						N/A	—	
	nominal cross-sectional area per table 15 (mm <sup>2</sup> ) :						N/A	—	
	type of conductors (rigid solid / rigid stranded / flexible).....						N/A	—	
	nominal diameter of thread (mm); torque 2/3 of that specified in 12.2.8 (Nm .....						N/A	—	
<b>Test for Portable socket-outlets and rewirable plugs with incorporated components</b>									
specimen	type of flexible cable <sup>(1)</sup>	number of conductors and nominal cross-sectional area (mm <sup>2</sup> ) <sup>(1)</sup>	test circuit (L-L/L-N/L-E)	Test current (table 20), Clause 19 for 1 h (components short circuited) (A)	Test current is rated current of the portable accessory or the rated current of the component (s), whichever is the lower (A)	measured ΔT (K)	allowed ΔT (K)	ΔT of external parts (25.3)(K) <sup>(2)</sup>	
N/A	N/A	N/A	N/A	N/A	N/A	N/A	N/A	N/A	
N/A	N/A	N/A	N/A	N/A	N/A	N/A	N/A	N/A	
N/A	N/A	N/A	N/A	N/A	N/A	N/A	N/A	N/A	
supplementary information: <sup>(1)</sup> Non-rewirable accessories ; <sup>(2)</sup> Metal parts 30 K ; non-metallic parts 40 K									
<b>Test for non-rewirable plugs with incorporated components</b>									

specimen	type of flexible cable (1)	number of conductors and nominal cross-sectional area (mm <sup>2</sup> ) (1)	test circuit (L-L/L-N/L-E)	Test current is equal to the test current for the combination of the plug and the cable as indicated in Table 20, for Clause 19. (components short circuited) (A)	Test current is equal to the test current for the combination of the plug and the cable as indicated in Table 20, for Clause 21 or the rated current of the component (s), whichever is the lower (A)	measured $\Delta T$ (K)	allowed $\Delta T$ (K)	$\Delta T$ of external parts (25.3)(K) (2)
N/A	N/A	N/A	N/A	N/A	N/A	N/A	N/A	N/A
N/A	N/A	N/A	N/A	N/A	N/A	N/A	N/A	N/A
N/A	N/A	N/A	N/A	N/A	N/A	N/A	N/A	N/A

supplementary information:  
 (1) Non-rewirable accessories; (2) Metal parts 30 K ; non-metallic parts 40 K

20	TABLE: breaking capacity								P
	rating of accessory (A/V) .....						16/250		—
	type of accessory (non-rewirable / rewirable) ....						Rewirable		—
	type of flexible cable (non-rewirable accessories) .....						N/A		—
	number of conductors and nominal cross-sectional area (mm <sup>2</sup> ) (non-rewirable accessories) .....						N/A		—
	nominal cross-sectional area per table 15 (mm <sup>2</sup> ) :						2,5		—
	type of conductors (rigid solid / rigid stranded / flexible).....						Rigid		—
	nominal diameter of thread (mm); torque 2/3 of that specified in 12.2.8 (Nm).....						N/A		—
	rate of operation (strokes per minute) .....						30		—
specimen	test plug (for each type and current rating of socket-outlet)		test voltage (1,1 Vn) (V)	test current (1,25 In) cos $\varphi$ 0,6 (A)	number of strokes (plugs only)	number of strokes, with shutters – with current (1)	number of strokes, without shutters – with current (2)	remarks	
	pin dimensions (mm)	pin spacing (mm)							
21-0709	4,8	19,0	275	20	-	100	-	P	
21-0710	4,8	19,0	275	20	-	100	-	P	
21-0711	4,8	19,0	275	20	-	100	-	P	

supplementary information:  
 (1) starting point 1 or 3 of Figure 43  
 (2) starting point 2 of Figure 43

<b>21</b>	<b>TABLE: normal operation</b>								<b>P</b>
	rating of accessory (A/V) .....		16/250						—
	type of accessory (non-rewirable / rewirable) ....		Rewirable						—
	type of flexible cable (non-rewirable accessories) .....		N/A						—
	number of conductors and nominal cross-sectional area (mm <sup>2</sup> ) (non-rewirable accessories) .....		N/A						—
	nominal cross-sectional area per table 15 (mm <sup>2</sup> ) :		2,5						—
	type of conductors (rigid solid / rigid stranded / flexible).....		Rigid						—
	nominal diameter of thread (mm); torque 2/3 of that specified in 12.2.8 (Nm).....		N/A						—
	rate of operation (strokes per minute) .....		30						—
specimen	test plug (for each type and current rating of socket-outlet)		test voltage (V <sub>n</sub> ) (V)	test current (table 20), cos φ 0,8 (A)	number of strokes (plugs only)	number of strokes, with shutters – with current <sup>(1)</sup>	number of strokes, without shutters – with current <sup>(2)</sup>	number of strokes, with shutters – without current <sup>(3)</sup>	
	pin dimensions (mm)	pin spacing (mm)							
21-0709	4,8	19,0	250	16	-	10000	-	-	P
21-0710	4,8	19,0	250	16	-	10000	-	-	P
21-0711	4,8	19,0	250	16	-	10000	-	-	P
	<b>TABLE: test for shuttered socket-outlets</b>								<b>P</b>
specimen	Gauge of figure 9, applied with a force of 20 N, for approximately 5 s, successively in three directions				Steel gauge of figure 10, applied with a force of 1 N for approximately 5 s, in three directions				
21-0709	P				P				P
21-0710	P				P				P
21-0711	P				P				P
<b>19</b>	<b>TABLE: temperature rise test</b>								<b>P</b>
specimen	test circuit (L-L/L-N/L-E)	test current (table 20 for clause 21) for 1 h (A)		measured dT (K)	allowed dT (K)				
21-0709	L-N	16		21,0	<45		P		
21-0710	L-N	16		20,5	<45		P		
21-0711	L-N	16		20,0	<45		P		
21-0709	L-E	16		32,4	<45		P		
21-0710	L-E	16		27,0	<45		P		
21-0711	L-E	16		22,7	<45		P		

21-0709	E	16	20,4	<45	P
21-0710	E	16	18,6	<45	P
21-0711	E	16	15,8	<45	P
<b>17.2</b>	<b>TABLE: electric strength</b>				<b>P</b>
specimen	item per 17.1	test voltage applied between:	test voltage (V)	flashover / breakdown (Yes/No)	
21-0709	A	Between all poles connected together and the body	1500	No	
21-0709	B	Between each pole in turn and all other	1500	No	
21-0710	A	Between all poles connected together and the body	1500	No	
21-0710	B	Between each pole in turn and all other	1500	No	
21-0711	A	Between all poles connected together and the body	1500	No	
21-0711	B	Between each pole in turn and all other	1500	No	
<b>supplementary information:</b>					
<sup>(1)</sup> starting point 1 or 3 of Figure 43					
<sup>(2)</sup> starting point 2 of Figure 43					
<sup>(3)</sup> starting point 1 or 2 of Figure 43					

<b>22</b>	<b>TABLE: force necessary to withdraw the plug</b>				<b>P</b>
	Rated current (A) .....		16		—
	Number of poles .....		2		—
<b>22.1</b>	<b>Verification of the maximum withdrawal force</b>				
specimen	socket-outlets (multi-pin gauge)		plugs with resilient earthing contact assemblies (single-pin gauge)		
	maximum withdrawal force (N)	the test plug did not remain in the socket-outlet (Y/N)	maximum withdrawal force (N)	the test pin gauge did not remain in the contact assembly	
21-0709	50	Y	-	-	P
21-0710	50	Y	-	-	P
21-0711	50	Y	-	-	P
<b>22.2</b>	<b>Verification of the minimum withdrawal force</b>				
specimen	socket-outlets (single-pin gauge)		plugs with resilient earthing contact assemblies (single-pin gauge)		
	minimum withdrawal force (N)	the test pin gauge did not fall from each individual contact-assembly within 30 s (Y/N)	minimum withdrawal force (N)	the test pin gauge did not fall from each individual earthing contact-assembly within 30 s (Y/N)	

21-0709	2	Y	-	-	P
21-0710	2	Y	-	-	P
21-0711	2	Y	-	-	P
<b>supplementary information:</b>					

<b>23.2</b>	<b>TABLE: pull and torque test</b>					<b>N/A</b>
	rating of accessory (A) .....				N/A	—
	type of accessory (non-rewirable / rewirable) ....				N/A	—
	smallest/largest cross-sectional area per table 17 (mm <sup>2</sup> ) (rewirable accessories) .....				N/A	—
	nominal diameter of thread (mm); torque 2/3 per table 6 (Nm) (rewirable accessories) .....				N/A	—
specimen	type of flexible cable	number of conductors and nominal cross-sectional area (mm <sup>2</sup> )	pull (100 times) (N)	torque (1 min) as specified in table 18 (Nm)	displacement (mm)	
N/A	N/A	N/A	N/A	N/A	N/A	N/A
N/A	N/A	N/A	N/A	N/A	N/A	N/A
<b>supplementary information:</b>						

<b>23.4</b>	<b>TABLE: flexing test</b>				<b>N/A</b>	
	rated current (A) .....				N/A	—
specimen	type of flexible cable	number of conductors and nominal cross-sectional area (mm <sup>2</sup> )	test current (A)	mass (N)		
N/A	N/A	N/A	N/A	N/A	N/A	
N/A	N/A	N/A	N/A	N/A	N/A	
<b>supplementary information:</b>						

<b>24.1</b>	<b>TABLE: impact test</b>			
part of enclosure tested per table 21 (A, B, C, D)	blows per part	height of fall (mm)	comments	
A	5	80	P	
B	4	80	P	
D*	4	160	P	
<b>supplementary information: test performed on sample on surface installation with WXA681</b>				

<b>25.2</b>	<b>TABLE: ball pressure test of insulating materials</b>			<b>P</b>
	allowed impression diameter (mm) .....		≤ 2 mm	—

part under test	test temperature (°C)	impression diameter (mm)
Base	125	1,3
Cover	125	1,1
Shutter support	125	1,2
<b>supplementary information:</b>		

25.3	<b>TABLE: ball pressure test of insulating materials</b>		<b>P</b>
	allowed impression diameter (mm) .....	≤ 2 mm	—
part under test	test temperature (°C) <sup>(1)</sup>	impression diameter (mm)	
Shutter	70	0,8	
<b>supplementary information:</b> <sup>(1)</sup> (70 ± 2) °C / (40 ± 2) °C + highest temperature rise determined during the test of clause 19			

26.1	<b>TABLE: threaded part torque test</b>					<b>N/A</b>
threaded part identification	diameter of thread (mm)	column number (1, 2 or 3)	applied torque (Nm)	times (5/10)	no damage	
N/A	N/A	N/A	N/A	N/A	N/A	N/A
<b>supplementary information:</b>						

27.1	<b>TABLE: creepage distances, clearances and distances through sealing compound</b>						<b>P</b>
	rated voltage (V) .....	250					—
item per table 23	creepage distance dcr, clearance cl and distance through sealing compound dtsc at/of:	require d cl (mm)	cl (mm)	require d dcr (mm)	dcr (mm)	require d dtsc (mm)	dtsc (mm)
1	Between live parts of different polarity	≥ 3	>4	≥ 3	>4	≥ 3	-
2	Between live parts and .....	≥ 3	>8	≥ 3	>8	≥ 3	-
<b>supplementary information:</b>							

28.1.1	<b>TABLE: glow-wire test</b>					<b>P</b>
part under test	material designation	test temperature (°C)	visible flame and sustained glowing (Y/N)	flame and glowing extinction time	ignition of the tissue paper (Y/N)	
Complete product	PC+PA	850	Y	8	N	
<b>supplementary information:</b>						

<b>28.2</b>	<b>TABLE: resistance to tracking</b>			<b>N/A</b>
	number of drops .....	:	N/A	—
<b>part under test</b>	<b>material designation</b>		<b>test voltage (V)</b>	<b>flashover / breakdown (Yes/No)</b>
N/A	N/A		N/A	N/A
<b>supplementary information:</b>				

**List of test equipment used:**

A completed list of used test equipment shall be provided in the Test Reports when a Customer's Testing Facility according to CTF stage 1 or CTF stage 2 procedure has been used.

Note: This page may be removed when CTF stage 1 or CTF stage 2 are not used. See also clause 4.8 in OD 2020 for more details.

Clause	Measurement / testing	Testing / measuring equipment / material used, (Equipment ID)	Range used	Last Calibration date	Calibration due date
8	TIME	w8t0004_01	0-15MIN	07/2021	07/2024
9	GAUGE	w8g0008_01	-		
9	GAUGE	w8g0009_01	-	06/2021	06/2023
9	GAUGE	w8d0044_03	-	08/2021	08/2022
9	GAUGE	w8m0039_01_400	-	06/2020	06/2023
9	GAUGE	w8g0011_01	-		
9	TIME	w8t0004_01	CHRONO	07/2021	07/2024
9	GAUGE	w8d0082_03	-	06/2021	06/2023
9	GAUGE	w8d0076_03	-	06/2021	06/2023
9	GAUGE	W8D0132_03	-	06/2021	06/2022
9	GAUGE	W8D0132_03	-	06/2021	06/2022
9	GAUGE	W8D0126_03	-	11/2020	11/2021
10	GAUGE	w8d0011_03	-	06/2021	06/2024
10	GAUGE	w8d0012_03	-	06/2021	06/2024
10	TIME	w8t0004_01	0-15MIN	07/2021	07/2024
11	ELECTRIC	w8e0001_06		01/2021	01/2022
12	ELECTRIC	w8e0003_02	10-40A	01/2021	01/2022
12	ELECTRIC	w8e0011_04	-	01/2021	01/2022
12	ELECTRIC	w8e0002_02	10-40A	01/2021	01/2022
12	ELECTRIC	w8e0007_10	-	01/2021	01/2022
12	EQUIPMENT	w8n0005_05	-	02/2019	02/2022
12	EQUIPMENT	w8n0007_05	-	-	-
12	MASS	w8m0016_01	0,7 Kg	01/2020	01/2023
12	MASS	w8m0015_01	0,4 Kg	01/2020	01/2023
12	TIME	w8t0004_01	0-15MIN	07/2021	07/2024
12	MASS	w8m0044_01	50 g	06/2020	06/2022
12	MASS	w8m0045_01	100 g	06/2020	06/2022
13	EQUIPMENT	w8m0017_01	0-500N	01/2020	01/2023
13	GAUGE	w8d0005_01	-	09/2020	09/2023
13	TIME	w8t0004_01	0-15MIN	07/2021	07/2024
16	TEMPERATURE	w8k0001_04	climatic C	02/2021	02/2022
17	ELECTRIC	w8e0002_06	HV generator	01/2021	01/2022
17	ELECTRIC	w8e0001_06	multimeter	01/2021	01/2022
17	TIME	w8t0004_01	chrono	07/2021	07/2024



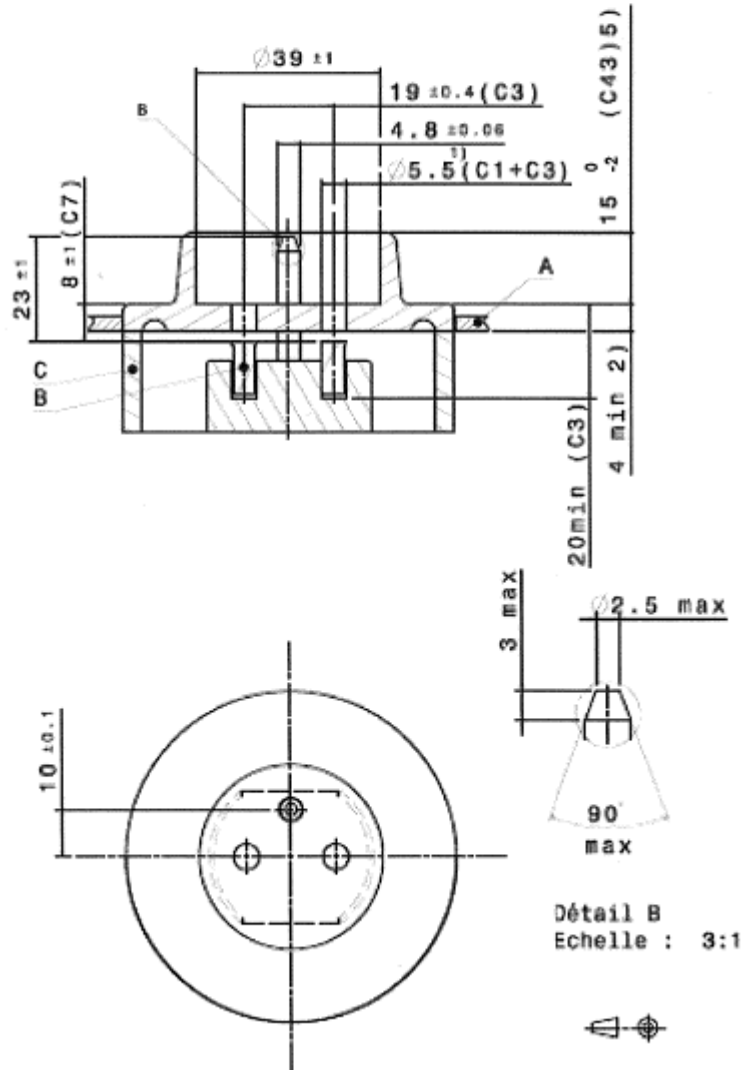
19	ELECTRIC	w8e0003_02	generator	01/2021	01/2022
19	ELECTRIC	w8e0006_10	datalogger	01/2021	01/2022
19	GAUGE	w8d0146_03	plug	11/2020	11/2021
19	GAUGE	w8d0143_03	plug	11/2020	11/2021
19	GAUGE	w8d0145_03	plug	11/2020	11/2021
20/21	EQUIPMENT	w8e0001_12	-	-	-
20/21	ELECTRIC	w8e0005_12	load	01/2021	01/2022
20/21	GAUGE	w8d0146_03	plug	11/2020	11/2021
20/21	GAUGE	w8d0143_03	plug	11/2020	11/2021
20/21	GAUGE	w8d0145_03	plug	11/2020	11/2021
20/21	ELECTRIC	w8e0002_06	HV generator	01/2021	01/2022
20/21	ELECTRIC	w8e0003_02	generator	01/2021	01/2022
20/21	ELECTRIC	w8e0006_10	datalogger	01/2021	01/2022
22	MASS	w8m0007_01	50N	01/2020	01/2023
22	GAUGE	w8m0039_01_200	F: c4 / BE: c2	06/2020	06/2023

Appendix	NBN C61-112-1:2017 Standard Sheet V	
	Socket outlet 16 A - Checking of dimension.	

NBN C 61-112-1:2017

FEUILLE DE NORMALISATION V - Socle fixe et mobile bipolaire 16A 250 V - avec contact médian de terre

Dimensions en mm

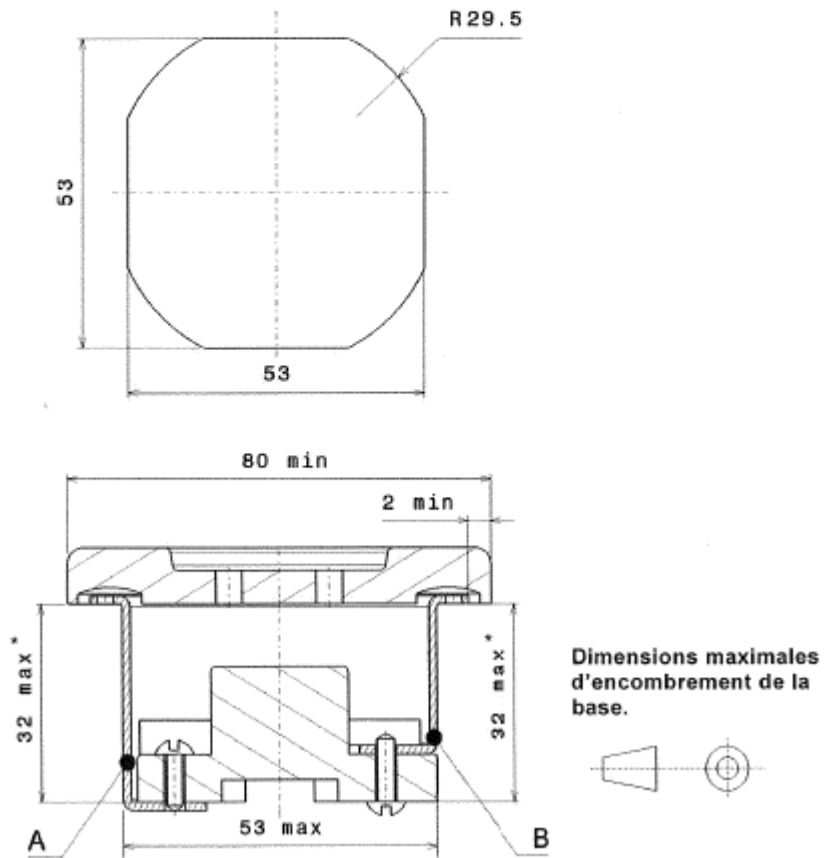


NBN C61-112-1:2017 Standard Sheet XII

NBN C 61-112-1:2017

**FEUILLE DE NORMALISATION XII - Socle fixe bipolaire 16A 250 V ~ pour pose encastrée à fixation par vis**

Dimensions en mm

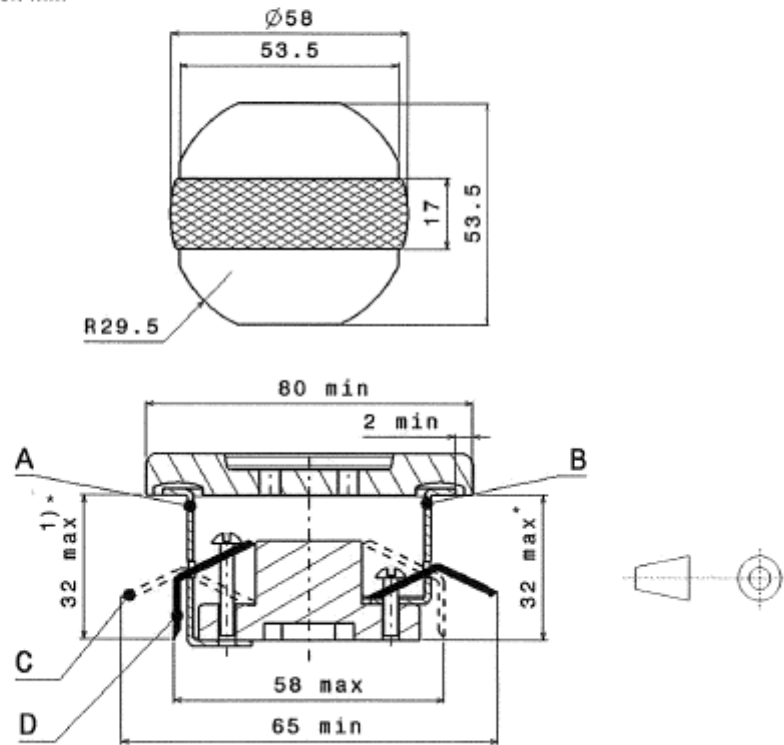


NBN C61-112-1:2017 Standard Sheet XIV

NBN C 61-112-1:2017

FEUILLE DE NORMALISATION XIV - Socle fixe bipolaire 16A 250 V ~ pour pose encastrée à fixation par griffes

Dimensions en mm

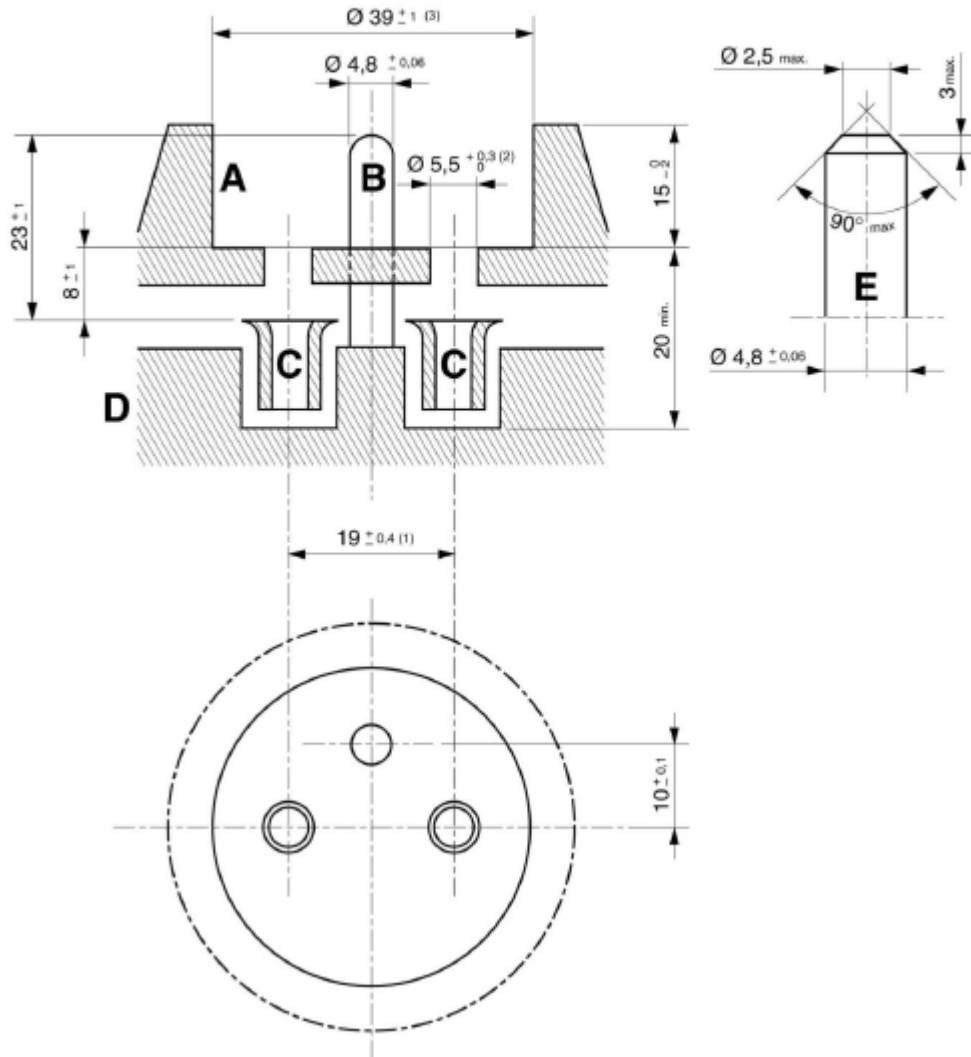


Dimensions maximales d'encombrement de la partie principale <sup>2)</sup>

Appendix : NF C 61-314:2017 Standard Sheet I

Socket outlet 16 A - Checking of dimension.

FEUILLE DE NORME I  
 SOCLE DE PRISE DE COURANT  
 Désignation : Socle fixe ou socle mobile 2P + T 16 A 250 V



§ 9.1 Dimensions checked with suitable tool				
Requested	Measured			Verdict
	21-0709	21-0710	21-0711	
10±0,1	10,1	9,9	10,0	P
4,8±0,06	4,8	4,8	4,8	P
Dia 39±1	38,8	38,8	38,9	P
23±1	22,9	23,1	23,1	P
13-15	14,7	14,6	14,7	P
58 MAX *	54,2	54,2	54,2	P
65 min *	68,6	68,6	68,6	P
80 min	92	92	92	P
32 MAX	25,8	25,8	25,8	P
Note *: claws dimension for frame WXA450G				

§ 9.1 Dimensions checked with the corresponding gauge.		
NBN C 61-112-1	NF C 61-314	Verdict
C9B		P
C1	C2	P
C2A	C4	P
C3	C5	P
C7	C3	P
C11	C6	P
C43	N/A	P
supplementary information: tested on samples 21-0709, 21-0710, 21-0711		

Appendix 2	National differences according to NBN C 61-112-1 & NF C 61-314			
	NBN C 61-112-1	NF C 61-314		
9.2	Gauge C18 for 1 min, 150 N	Gauge C1 for 1 min, 150 N	No insertion	P
10.3	Not possible to make a contact between a pin of a plug and a live socket contact of a socket-outlet while any other pin is accessible.			P
	NBN C 61-112-1	NF C 61-314		
	N/A	C1	No contact	P

10.6	150 N force applied axially to the earthing contact		No deformation	P
11	Part of earthing contact shall be in one piece or reliably connected by riveting, welding or the like			P
12.3.2	Diameter of largest flexible conductor 2,2mm	Diameter of largest flexible conductor 2,4mm	Ø 2,45 mm	P
22.2	NBN C 61-112-1	NF C 61-314		
	C2A ( 30 sec, 200 g )	C4B ( 30 sec, 200 g )	Remain in position	P
22.3	Only NF C 61-314			
	Gauge of max dimensions of standard sheet IV, Force 30 N		Electrical contact	P
24.20	Only NBN C 61-112-1			P
	Claws test		Tighten torque 0,8Nm	P
	Rotation test		Rotation torque 2,5Nm	P
	Traction test		Traction force 100N	P
	Flection test		Flection torque 2,5Nm	P
24.21	Claws screw test		Tighten torque 1,2Nm	P