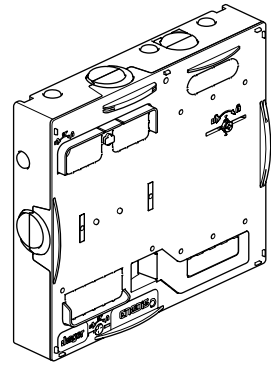
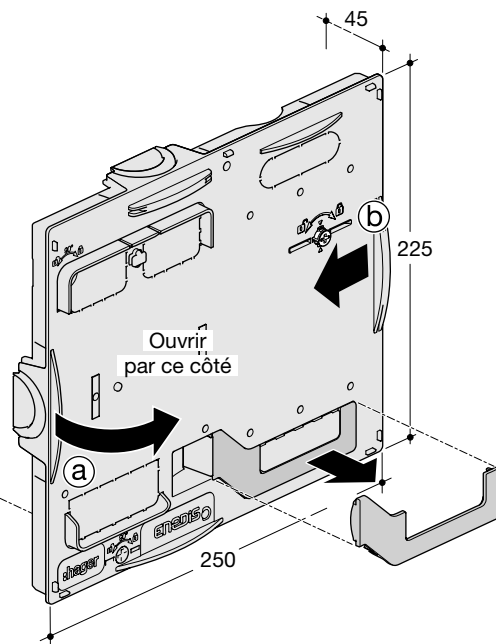
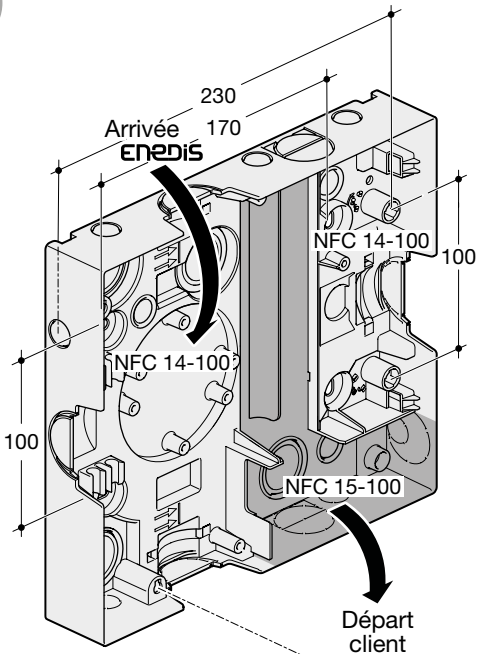
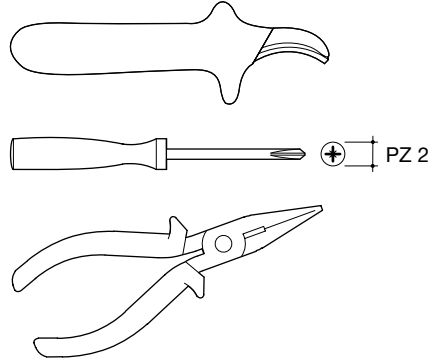
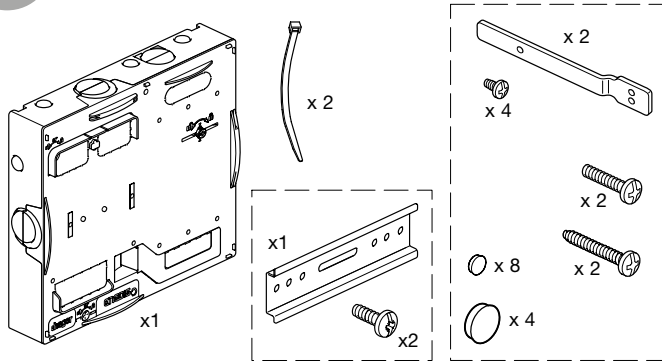


(FR)

Panneaux monophasé universel (Type E) de contrôle pour branchement à puissance limitée (tarif bleu) pour disjoncteur de branchement maximum 90 A et pour compteur Linky ou CBE
GA01E

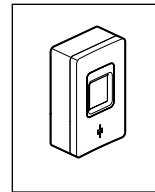


Gamma



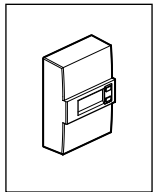
Fixations :

170 x 100	- sur mur
230 x 100	- sur goulotte - sur rehausse



Compteur
Linky +
Disjoncteur de
branchement

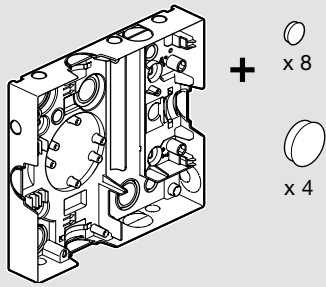
ou



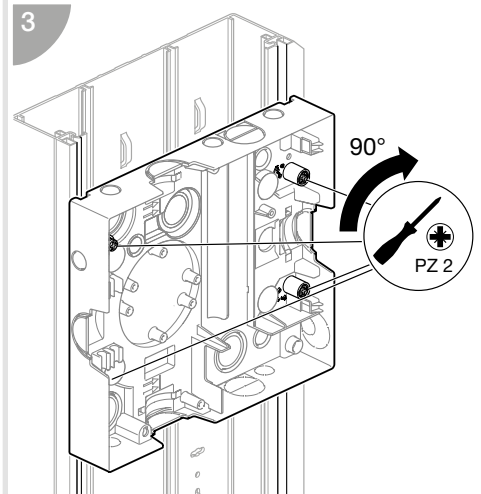
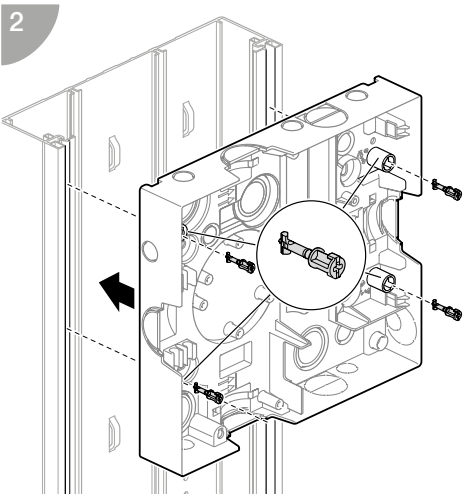
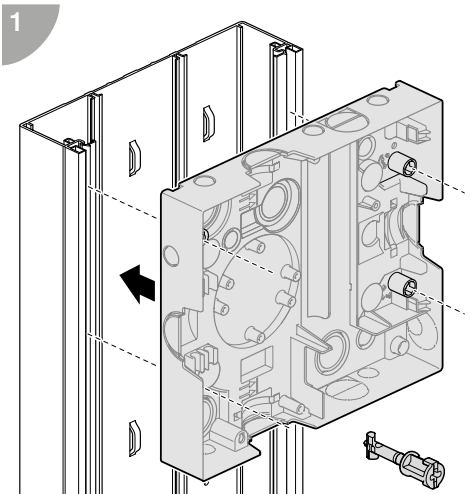
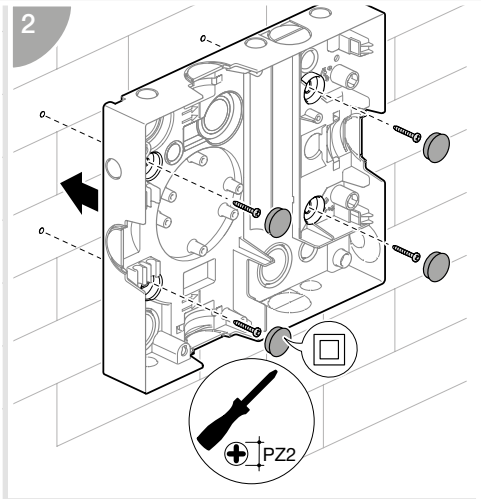
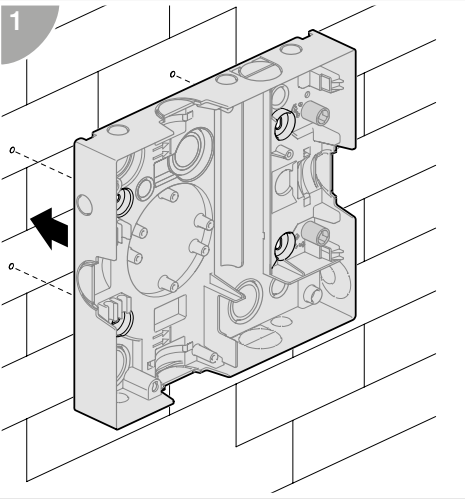
Compteur
CBE +
Disjoncteur de
branchement



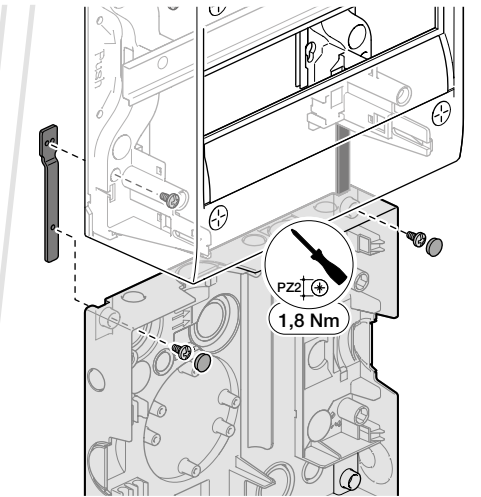
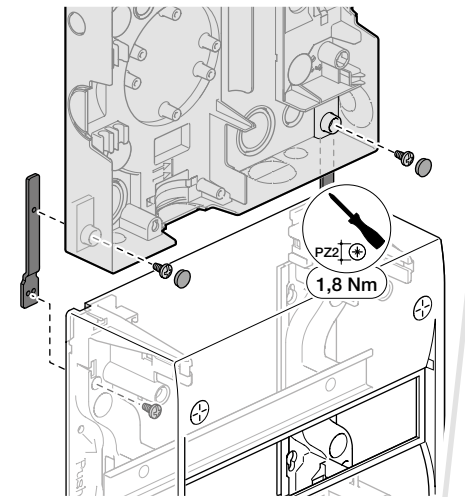
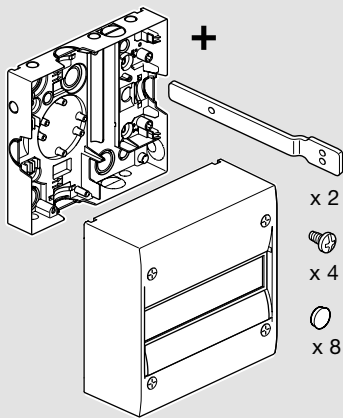
Montage tableau seul



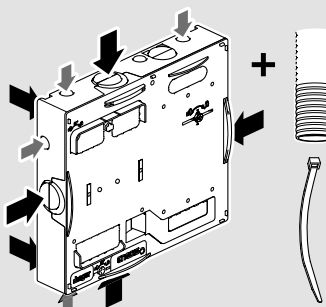
Jeu de 4 vis "fixation murale" **non** fourni.
Jeu de vis "quickfix" pour la fixation sur la goulotte incluse dans la goulotte Gamma.



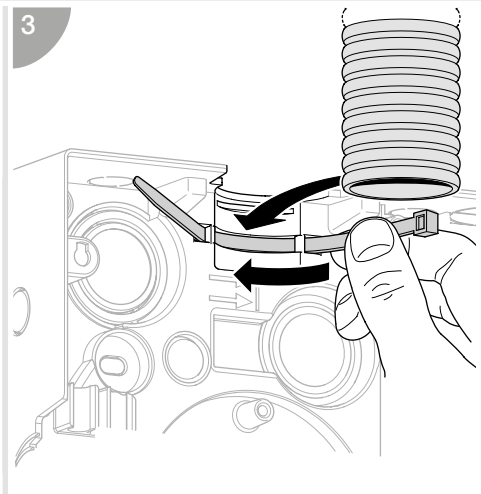
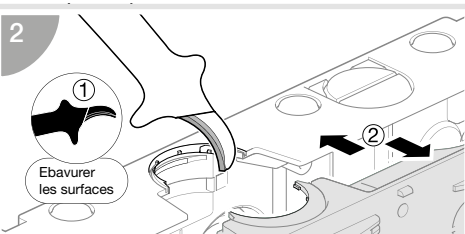
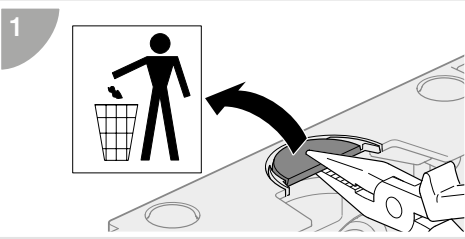
Montage avec coffret



Mise en place des conduits

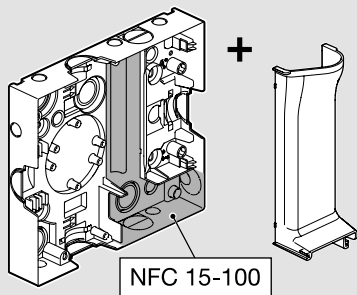


Arrivée ENEDIS et selon le cas, départ du câble de téléport.
Les câbles doivent arriver sous conduit jusque dans le panneau de contrôle.



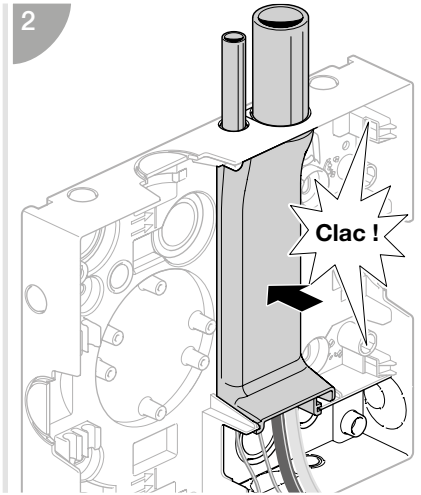
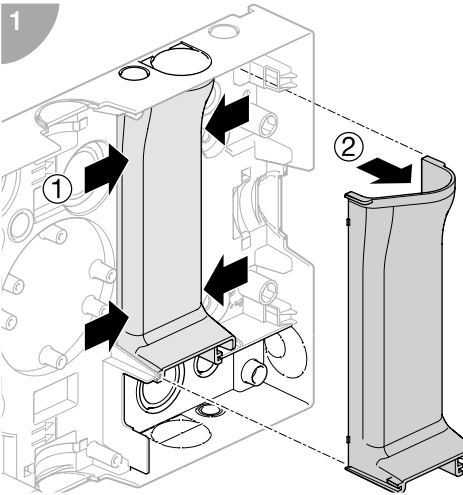


Montage goulotte

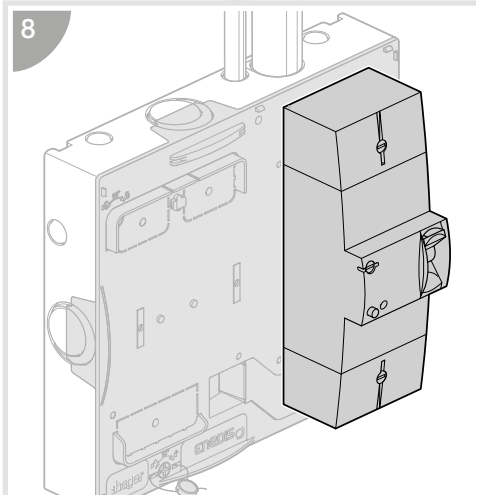
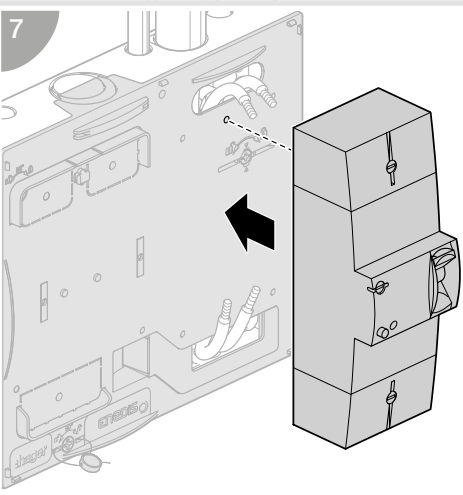
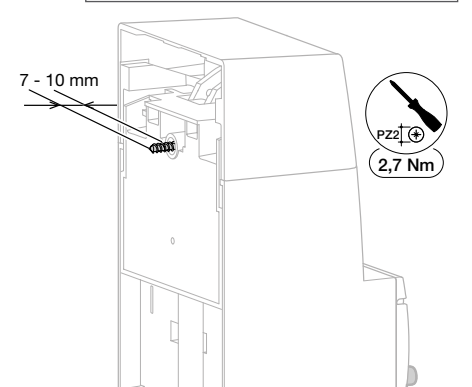
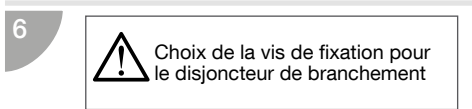
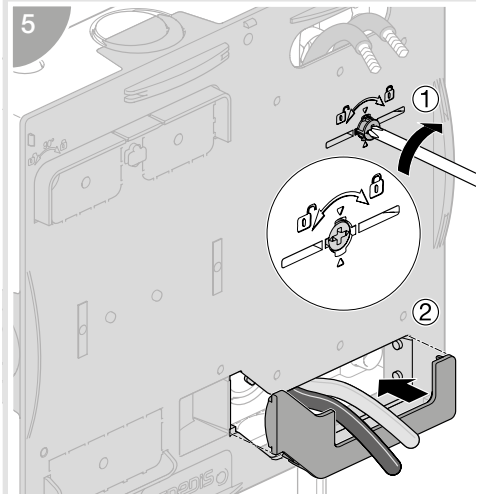
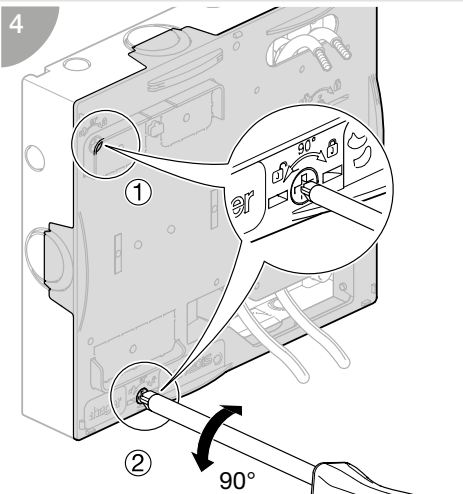
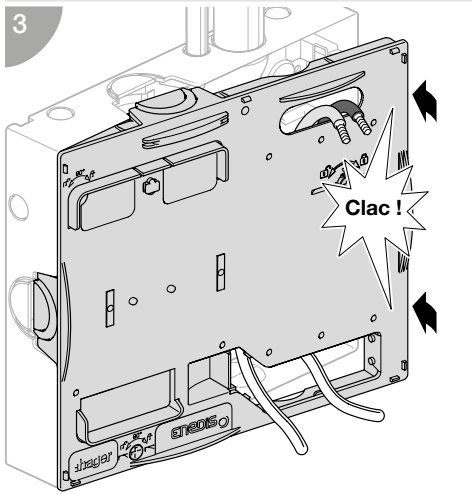
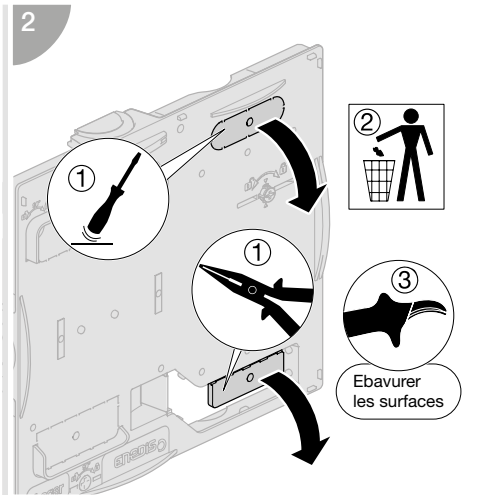
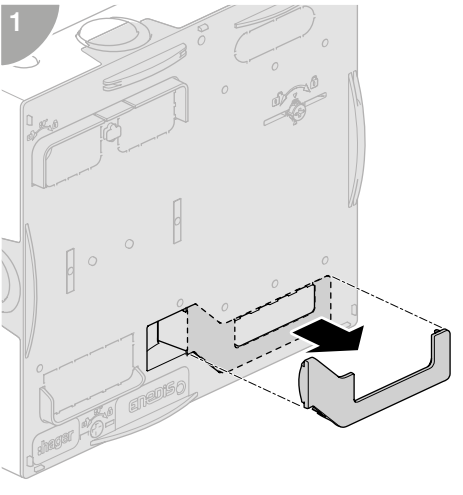
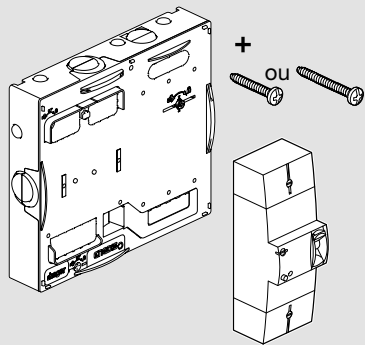


NFC 15-100

Mise en oeuvre de la goulotte
domaine NF C15-100

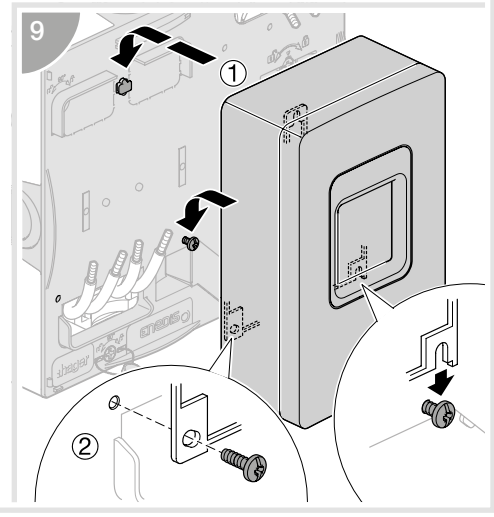
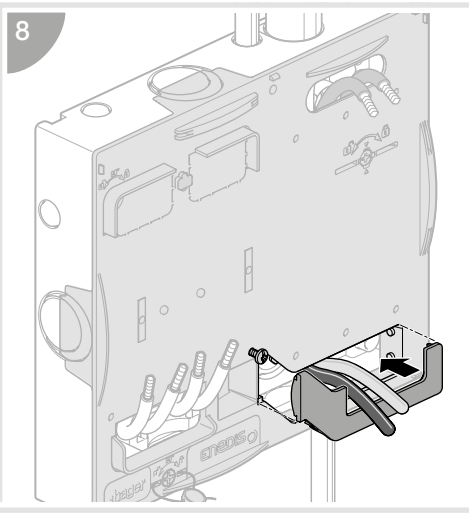
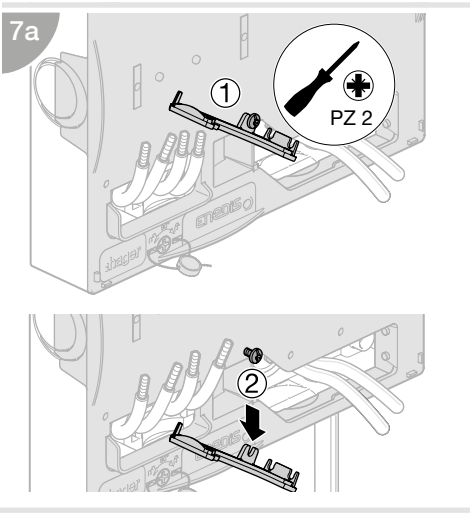
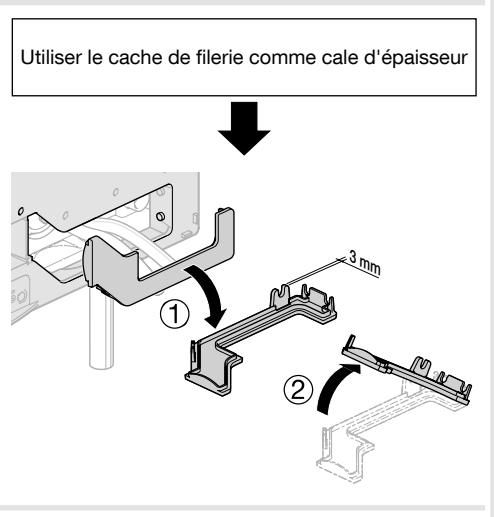
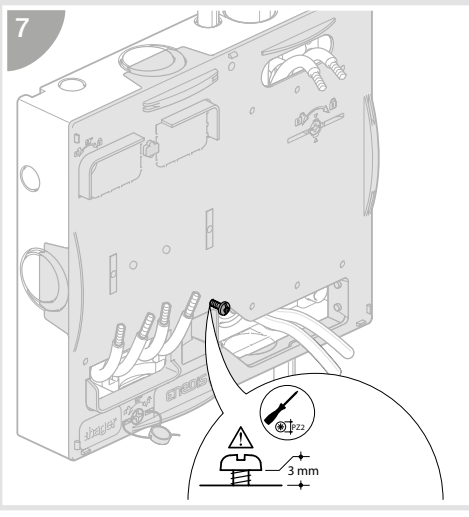
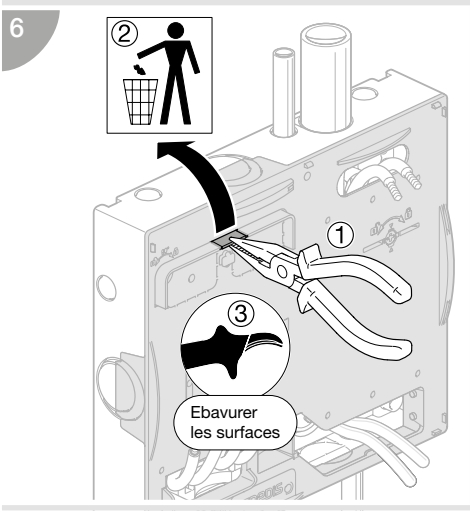
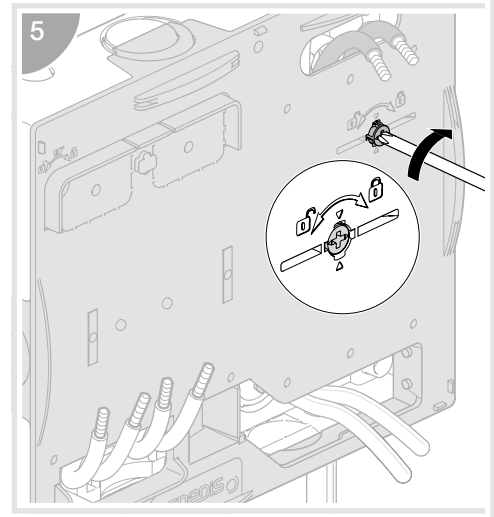
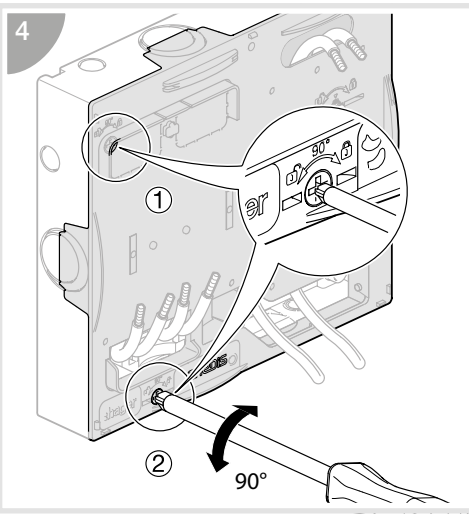
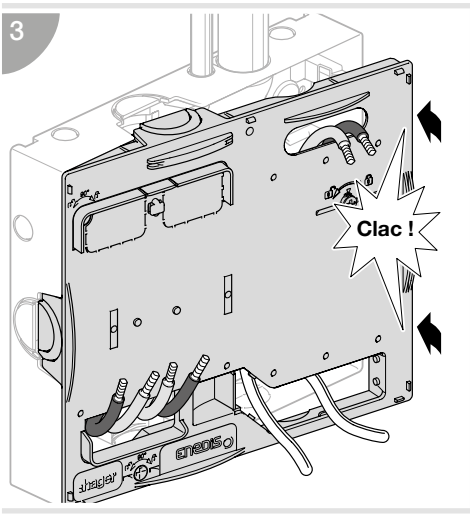
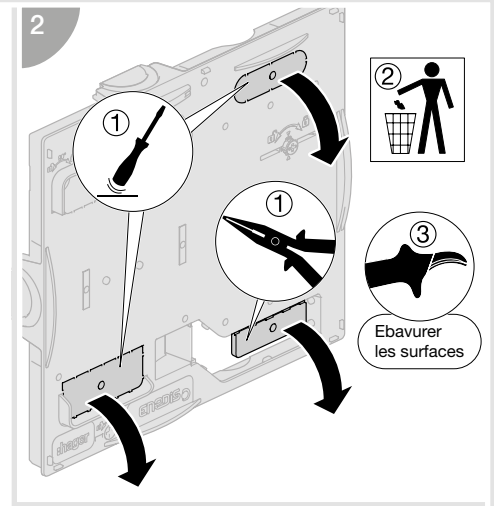
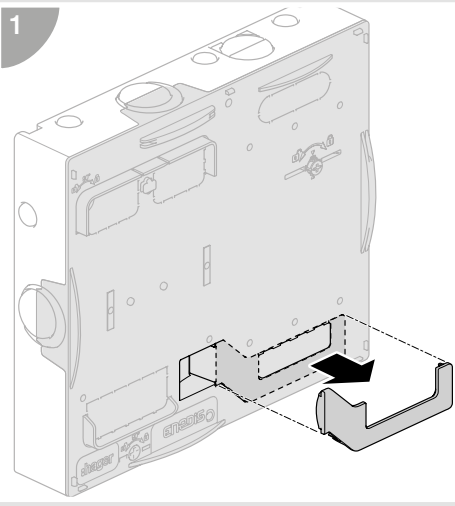
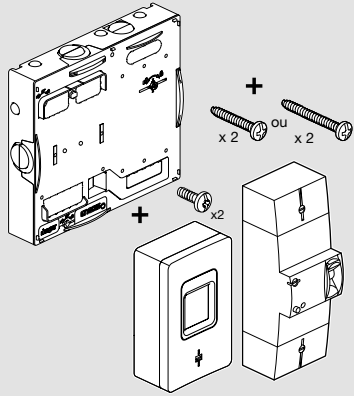


Mise en place du disjoncteur de branchement





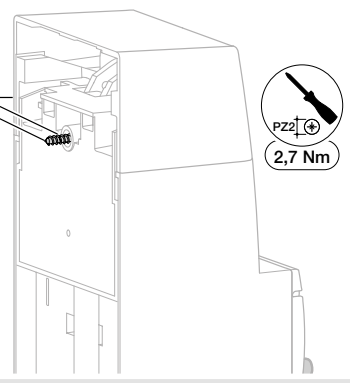
Mise en place du compteur Linky et disjoncteur de branchement



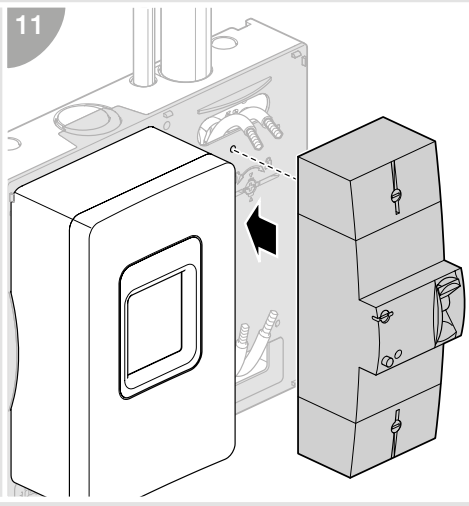
10

⚠ Choix de la vis de fixation pour le disjoncteur de branchement

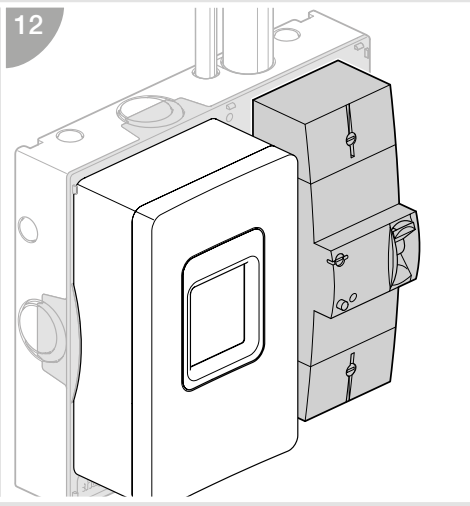
7 - 10 mm



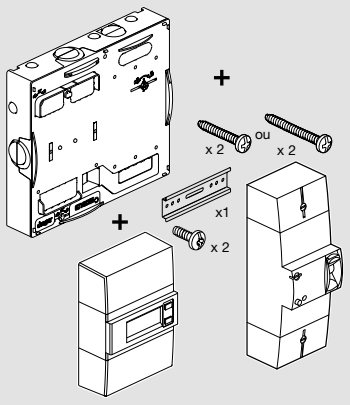
11



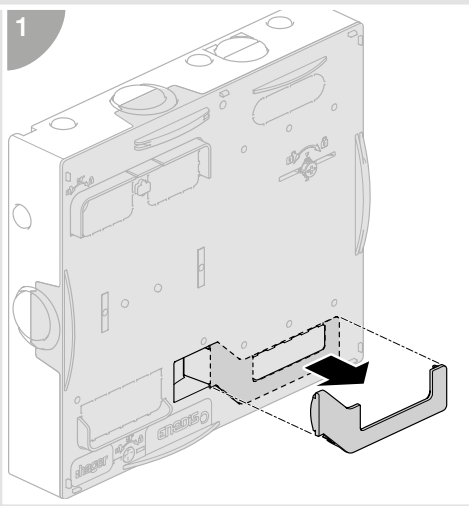
12



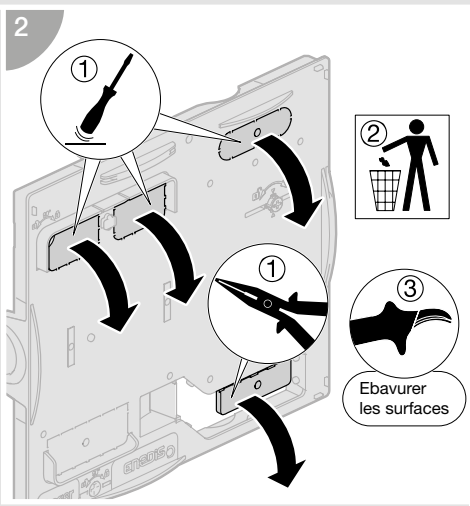
Mise en place du compteur CBE et du disjoncteur de branchement



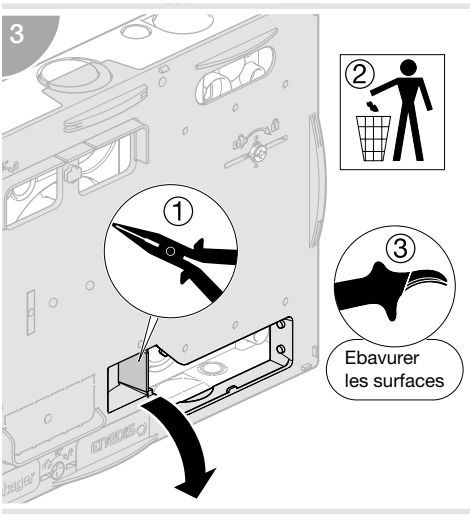
1



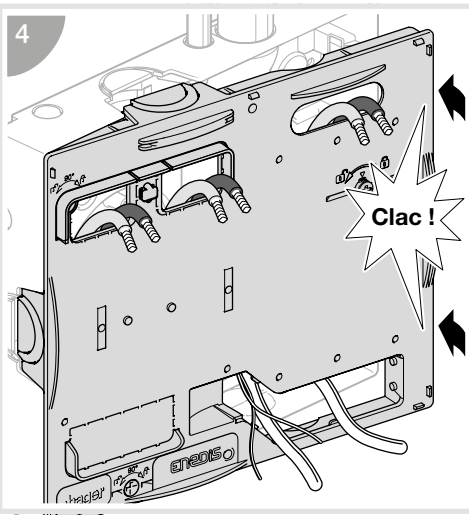
2



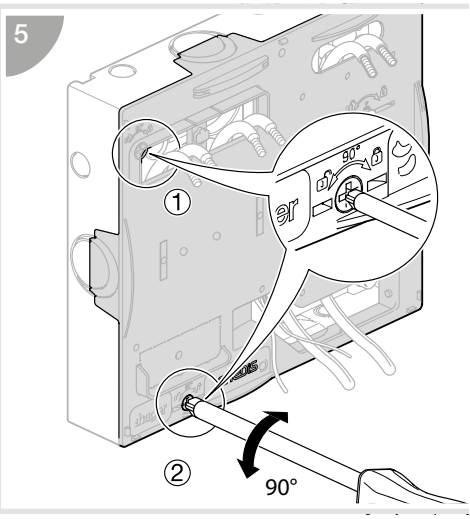
3



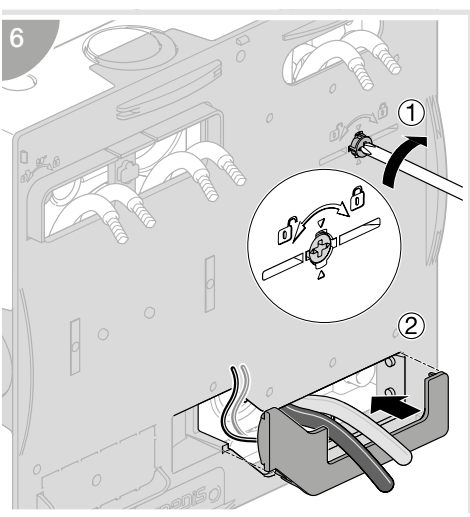
4



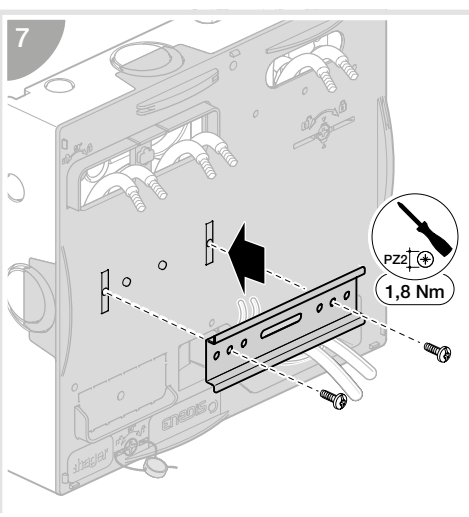
5



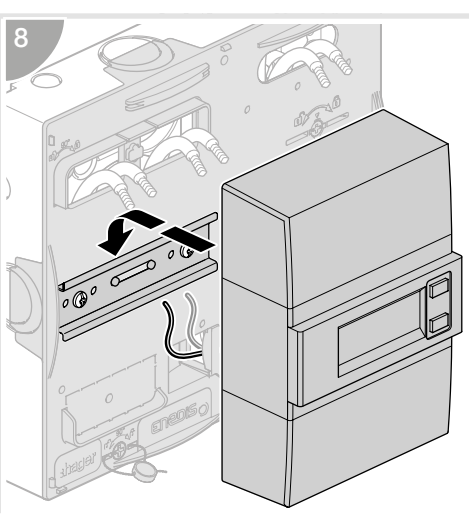
6




7



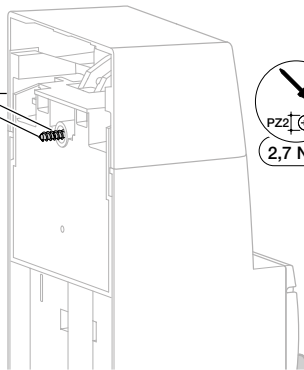
8



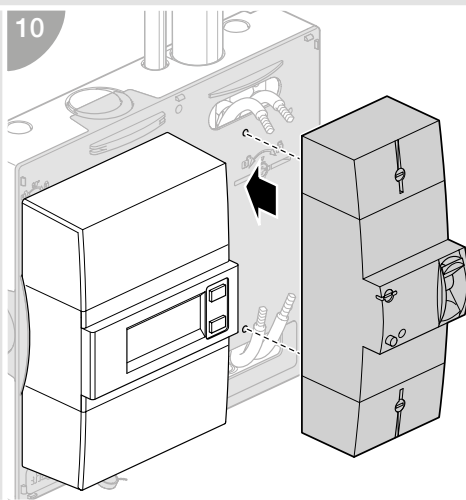
9

 Choix de la vis de fixation pour le disjoncteur de branchement

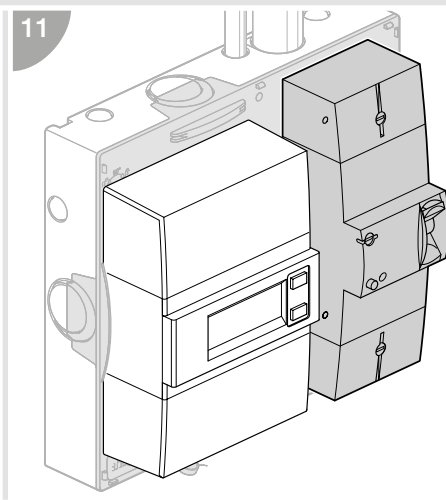
7 - 10 mm



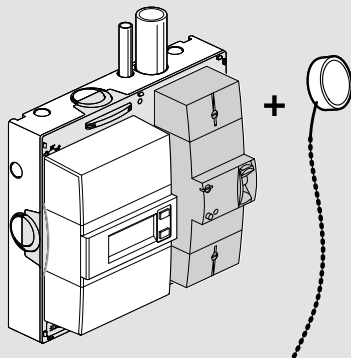
10



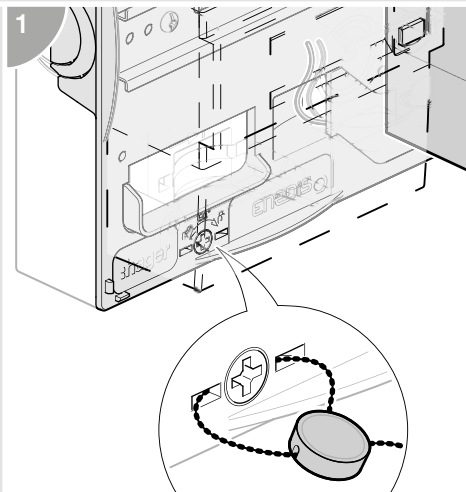
11



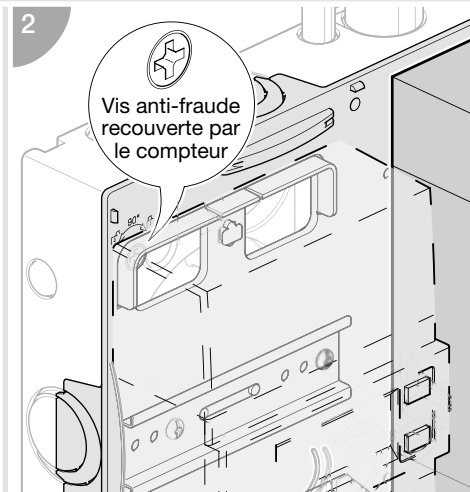
Verouillage compteurs CBE et Linky



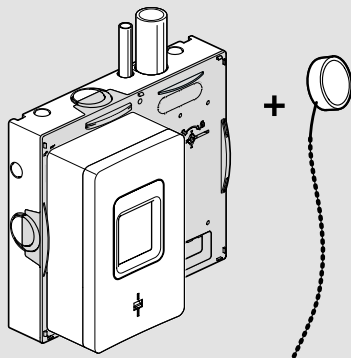
1



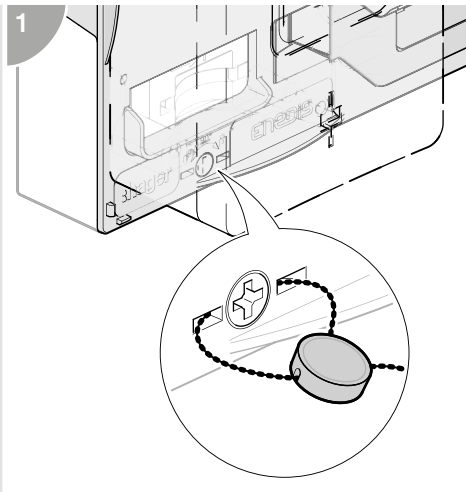
2



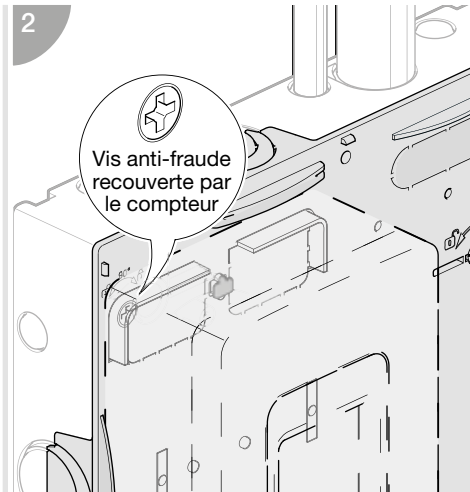
Verouillage compteurs CBE et Linky sans disjoncteur de branchement



1



2



3

