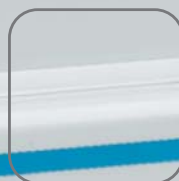
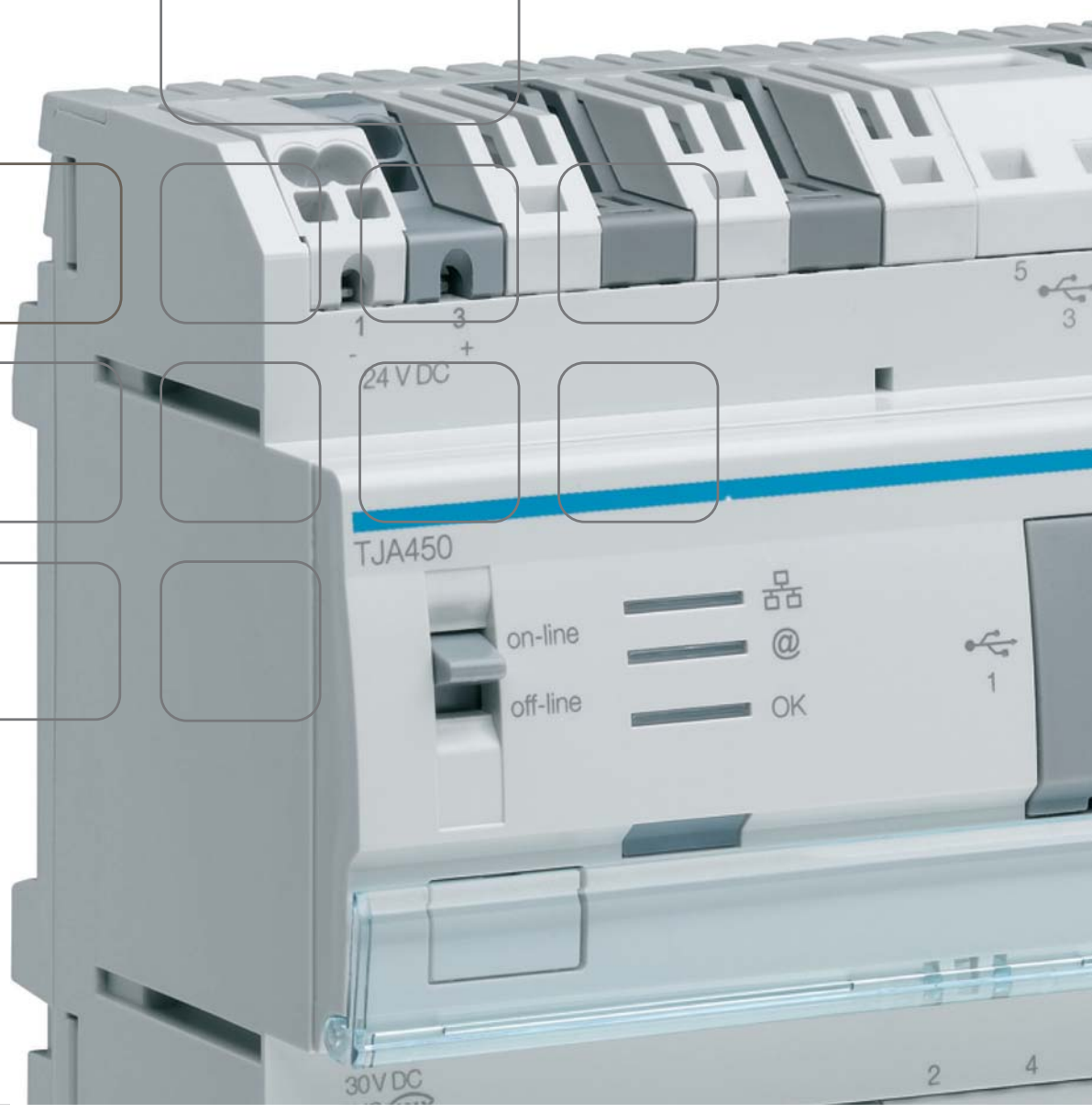


# domovea

touch panel



tebis



<b>1.</b>	<b>INTRODUCTION.....</b>	<b>3</b>
1.1	OVERVIEW.....	3
1.2	DESCRIPTION.....	3
1.3	SAFETY INSTRUCTIONS .....	3
1.4	START-UP .....	4
1.5	HOME PAGE.....	5
<b>2.</b>	<b>USE.....</b>	<b>7</b>
2.1	DASHBOARD VIEW .....	7
2.2	GROUPS VIEW.....	8
2.3	SEQUENCES VIEW .....	9
2.4	CAMERAS VIEW .....	10
2.5	FAVORITES VIEW .....	10
2.6	DISPLAY AND FILTER.....	10
2.7	FAVORITES.....	11
<b>3.</b>	<b>CUSTOMISATION AND PARAMETER SETTING .....</b>	<b>12</b>
3.1	STANDBY MODE .....	12
3.2	PARAMETERS .....	12
3.2.1	Configuration of the screen.....	13
3.2.2	Audio management.....	13
3.2.3	Screen.....	14
3.2.4	Profile.....	14
3.2.5	Journal .....	16
3.2.6	Network – Server settings .....	17
3.2.7	About.....	17
3.3	CLEANING AND MAINTENANCE.....	18
3.4	EXITING THE PROGRAM.....	18

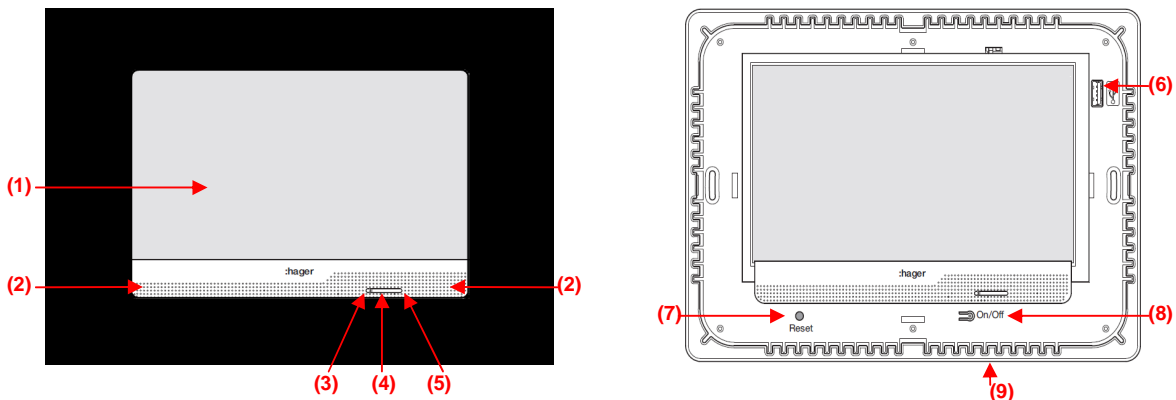
# 1. INTRODUCTION

## 1.1 Overview

**domovea touch panel** is a control and visualisation device for **KNX** installations. It is used to access all of the home automation functions of the house. All the functions described in the domovea software suite are accessible from this touch panel.

The various pages have been programmed by your installer and will hence differ from the views described in this document.

## 1.2 Description



- (1) : Touch panel surface
- (2) : Loudspeaker
- (3) : Microphone
- (4) : Movement sensor
- (5) : Indicator LED
- (6) : USB port
- (7) : Reset
- (8) : On/Off
- (9) : Temperature sensor

## 1.3 Safety instructions

The device must only be installed by a qualified electrician in accordance with the installation standards in force in your country. Do not install this module outside the building.

Do not use sharp or pointed objects (such as pencils, pens, etc.) to control the device. This may damage the touch surface.

Do not use acid products or solvents for cleaning. This may damage the device.

Use only a clean, soft, dry cloth for cleaning the touch screen (see section 3.3).

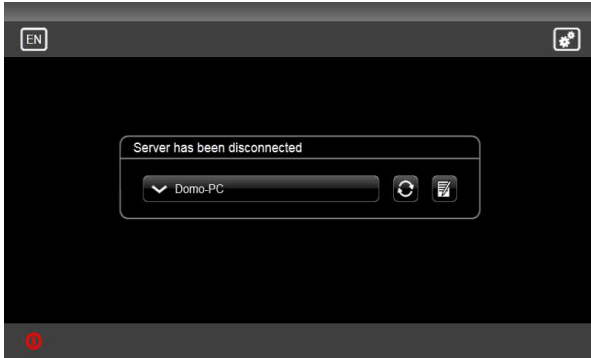
The connector on the front of the panel is for USB keys only.

## 1.4 Start-up

On power up, the **domovea touch panel** starts automatically. The IP address is configured through dynamic addressing (DHCP) allowing automatic connection to the network.


It also automatically detects the presence of the **domovea** server on the network and connects to it.


Nevertheless, it may be that this connection is not made. In this case, the view below appears:




This view is used to:

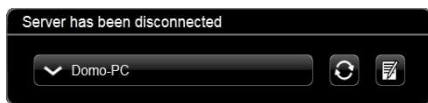
- Select the **domovea** server to which you wish to connect (see below).

- Access the parameter setting menu by clicking on  (see section 3).


- Select the language by clicking on .

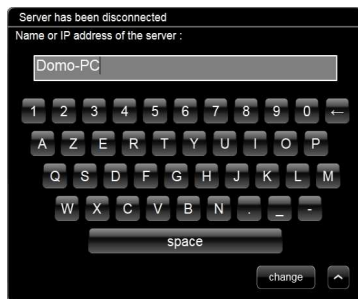
- Switch off the system by clicking on .


Selecting the **domovea** server:




Click on the bar to display the list of **domovea** servers available on the network. Select the server to start up the application.

Click on  to search for the servers available on the network.



When you click on , a keyboard appears. Enter the name or IP address of the server, if it has not been automatically detected.

Click 'connect' to start the application or  to return to the previous view.

## 1.5 Home page

The general functions for your installation are accessible from the dashboard.



### General bar




**21,7°C** : Temperature sensor

During configuration of your system, you can display a temperature and define the source of this measurement (internal thermostat or weather station) depending on which products are installed.

**thu, jan 20 5:30 pm** : Date and time display


During configuration of your system, when entering the settings, you can select the time zone, confirm automatic daylight saving time adjustment and synchronise the clock with a time server.

 : Connection indicator LED

If your **domovea touch panel** loses its connection with the KNX bus, this indicator LED switches to red. When this happens, no communication is possible between the bus and touch panel.

### Navigation bar



 : Back arrow

Each time you press on this symbol, you will be returned to the previous view.

 : Shortcut

These buttons provide a quick link to another view. The shortcut destination depends on the view from which you execute the command.

From the dashboard you will go to the group view.

From the group view you will go to the general control for the house.



: Access to the parameter setting menu

Quick links to the views:



Select '**dashboard**' view



Select '**sequences**' view



Select '**devices**' view



Select '**cameras**' view



Select '**favorites**' view

The **dashboard** functions will be described in detail in the following section.

## 2. USE


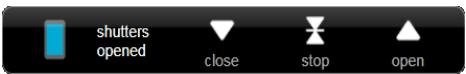


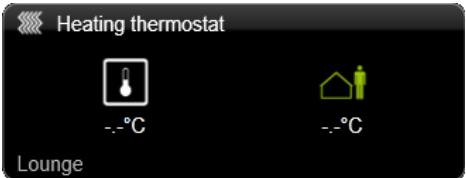


### 2.1 Dashboard view



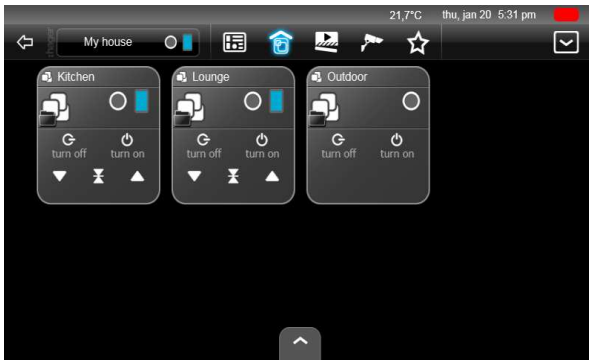
This view is used to enter the general commands for your installation.

By clicking in a frame (lights, shutters, etc.), without sending a command, you go to a view showing all the devices in a given category.

Details of the commands available:

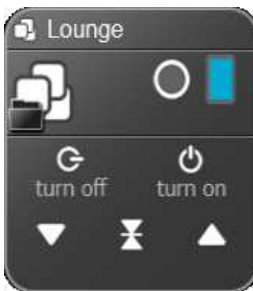
Screen	Function	Clicking on the symbol:
	Switching on or off all of the lights in your installation	Displays all of the lighting devices in your installation
	Moving up or down all of the shutters and blinds in your installation	Displays all of the shutter and blind devices in your installation
	Selecting the heating mode	Displays all of the heating and air conditioning thermostat devices in your installation
	Displaying the list of active scenes.	Displays the scenes' programming schedule.
	Alternating display of the various thermostat and weather station devices.	Displays details of the selected device.
	Displaying the current Home Status	Displays the Home Status menu in order to make changes.
	Displaying the date and time: Depending on the parameter settings, the date and time may be synchronised with an Internet time-server.	Clicking on the date: Displays the scheduler for programming the sequences.

## 2.2 Groups view



This view is used to browse your installation via the groups, usually corresponding to the rooms of your residence.

An example of the 'Lounge' device group



In this example, it is possible to turn on or off all of the lights in the lounge, or to raise or lower all of the shutters with a single command.

The  icon designates a group of devices.

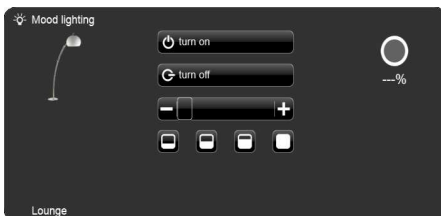
By clicking on a group, without sending a command, a detailed view of all the devices in that group can be accessed.



This view contains all the devices present in a group.

Comment: A device group may also contain a set of groups.

By clicking on the device, without sending a command, you access the advanced functions.



This device is used to turn lighting on or off, as well as to adjust the light intensity by clicking on the bar chart or by selecting the preset levels.

## 2.3 Sequences view



This view is used to visualise the various sequences programmed on your system by your installer.

In the adjacent example, we have programmed a simple sequence (Leave on holiday) and an automatic sequence (Leave for Work)

A sequence is a list of actions to be carried out on one or more items in your electrical installation.

These actions can be carried out in response to various events, such as a date, exertion of pressure on your touch screen or a KNX bus event.

The 'Leave for **Work**' example sequence

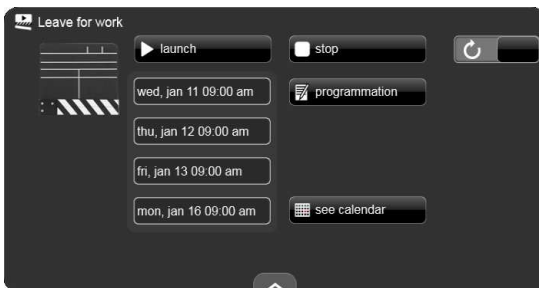
Action to take: Turn off all the lights and close all the shutters and blinds.

Trigger: Manual button push or automatic start-up, depending on the programming.

Automation: Start the sequence at 09:00 every day, except Saturday and Sunday.

All of these parameters have been programmed by your installer during commissioning.

By clicking on the device you will obtain the view below.

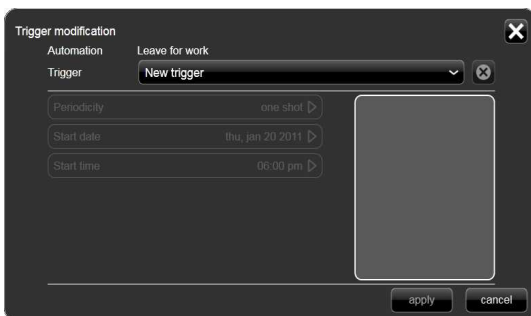


You can start the scenario manually or stop it during execution using the 'launch' and 'stop' buttons.

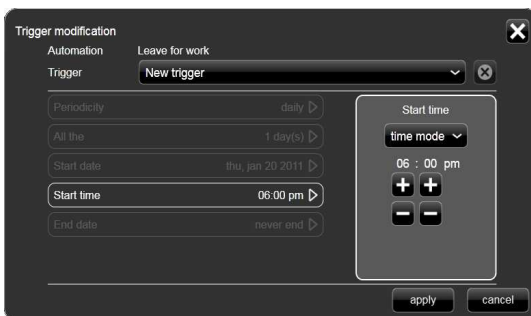
You can visualise the next events in the sequence and inhibit the trigger (derogate button). This inhibition will remain active until automatic mode is restored.

### Programming:

By clicking on the '**Programmation**' button, you can modify the existing timer triggers or add new ones.



To modify an existing trigger, click in the trigger selection box (**New Programmation**) and select the previously created trigger.

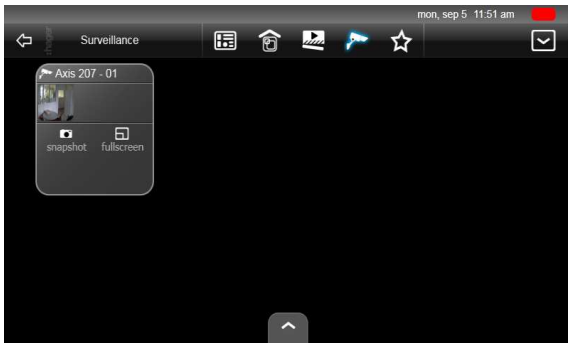


You will see the characteristic elements of the trigger.

You can, for example, modify the '**Start time**' object, by adjusting the desired time.

Click on 'apply' to confirm the changes.

## 2.4 Cameras view



This view is used to visualise all of the cameras configured in your system.

By clicking on a device, you access the view below to display the image from the camera.

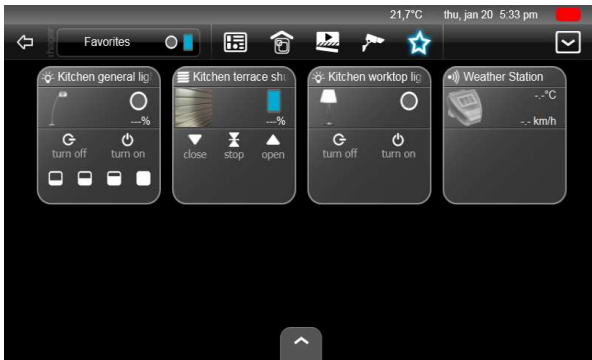


: switches to full-screen display of the image



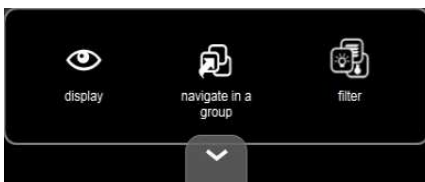
: captures an image of the screen

## 2.5 Favorites view



This view displays all of your favorite devices. (See section 2.7 for parameter setting of the favorites).

## 2.6 Display and filter



On certain views, an arrow will appear at the bottom of the screen allowing access to the view shown here. This gives you the possibility to adjust the type of display and to create a filter for visualising one or more device types.

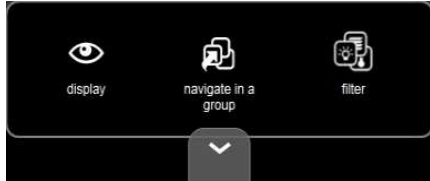
By clicking on **'display'**, you can select whether to display the devices on a **'Ribbon'** or in a **'List'**.

Clicking on **'navigate in a group'**, displays the list of groups in your application. Click on the desired group to access the commands.

By clicking on **'filter'** and depending on the view displayed, you can classify the devices by type (lighting, shutters, etc.).

Comment: in camera view, instead of **'Filter'**, the **'Archives'** icon is displayed, allowing access to images stored by screen capture.

## 2.7 Favorites

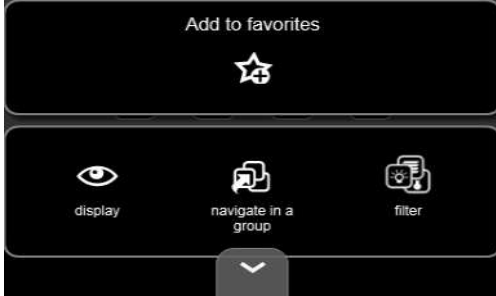



Clicking on the arrow at the bottom of the screen in a detailed device view, allows you to add or remove the device from favorites view.

If the **'Add to favorites'** window does not appear, the option **'Hide buttons to add/remove favorites'** must be deselected (see section 2.4 - General display options)





## 3. CUSTOMISATION AND PARAMETER SETTING

Independent of the specific application in your residence, it is possible to customise certain functions of the **domovea touch panel**.



Press on the  symbol at the top right of the screen to access the parameter setting bar.

Select the icon to access the chosen function:

Standby function	Cleaning function	Settings menu	Device shutdown menu
			

### 3.1 Standby mode

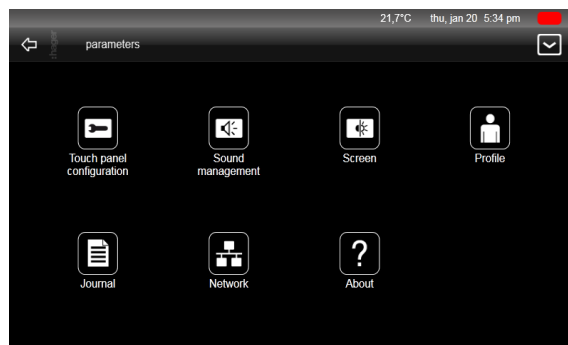


Press the  symbol to start the function.

In this mode, the processor and the screen switch to minimised operation. The system goes to standby mode and turns off the screen.

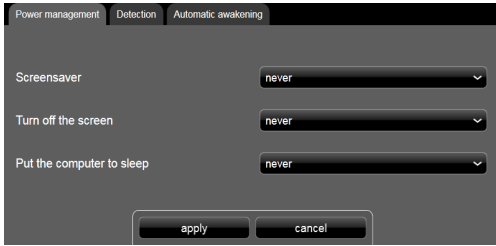
Whenever the screen is pressed, the system wakes up and again displays your view.

### 3.2 Parameters



## 3.2.1 Configuration of the screen

### - Power management



Used to adjust the various power management times. There are 3 types:

**'Screensaver'**: Displays the standby view

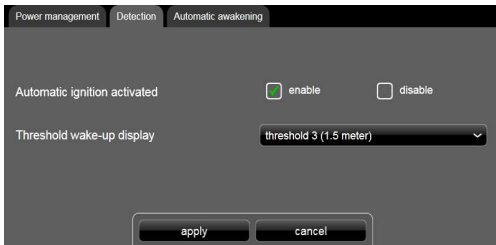
**'Turn off the screen'**: Turns off the screen (black screen)

**'Put the computer to sleep'**: Switches the CPU to standby mode.

The time periods available range from 1 minute to 10 hours. The function is deactivated if the term **'never'** is selected.

- Click on **'apply'** to confirm or **'cancel'** to return to the previous screen.

### - Detection



Automatically turns on the screen when a person approaches it physically.

Automatic ignition activated:

- enable: detection is activated
- disable: detection is disabled

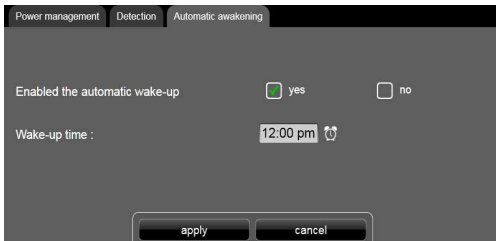
Threshold wake-up display: defines the distance below which the screen must leave standby mode.

There are six adjustable thresholds, from 0.5 m to 3 m.

When the user leaves these zones, the system will automatically return to standby.

- Click on **'apply'** to confirm or **'cancel'** to return to the previous screen.

### - Automatic awakening



Automatically wakes up the screen at a specific time.

Enabled the automatic wake-up:

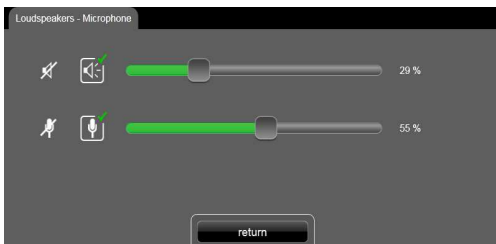
- YES: wake-up is activated.
- NO: wake-up is disabled.

Wake-up time: click on the time field. An adjustment box appears. Enter the wake-up time and click on **'apply'** to confirm it.

- Click on **'apply'** to confirm or **'cancel'** to return to the previous screen.




## 3.2.2 Audio management

### - Loudspeakers/Microphone



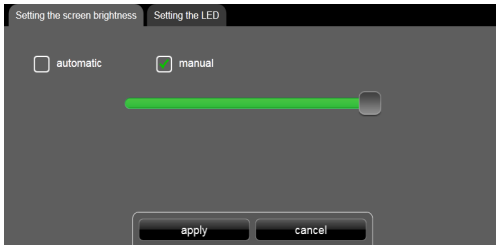
Used to set the loudspeaker and microphone parameters.

- To turn off the loudspeakers, click on  (mute).

- To activate the loudspeakers, click  and adjust the volume using the associated cursor. The higher the percentage set, the higher the volume.
- To turn off the microphone, click on  (mute).
- To activate the microphone, click  and adjust the volume using the associated cursor. The higher the percentage set, the higher the sensitivity.
- Click 'return' to go back to the previous screen.

### 3.2.3 Screen

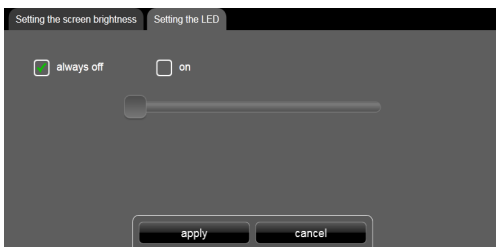
#### - **Setting the screen brightness**



Used to adjust the brightness of the screen:

- automatic: the brightness automatically adjusts in response to the ambient light intensity.
  - manual: You can adjust the brightness using the associated cursor. The higher the percentage set, the higher the brightness.
- Click on 'apply' to confirm or 'cancel' to return to the previous screen.

#### - **Setting the LED**



Used to adjust the indicator LED function:

- always off: The indicator LED on the front panel is always turned off.
  - on: The indicator LED on the front panel is turned on. You can adjust the brightness of this indicator LED using the associated cursor. The higher the percentage set, the higher the brightness.
- Click on 'apply' to confirm or 'cancel' to return to the previous screen.

### 3.2.4 Profile

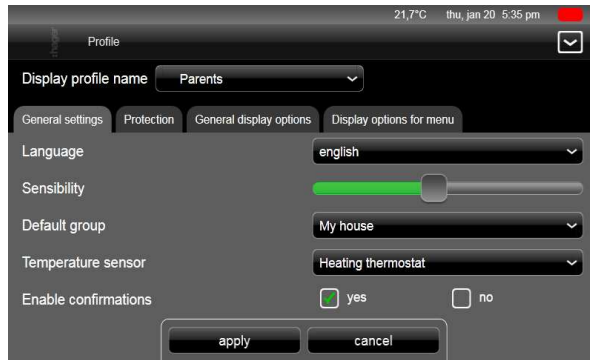
#### - **Displaying profile name**

Used to select and configure the profile in order to customise the appearance and set the user rights of the various clients in the installation.

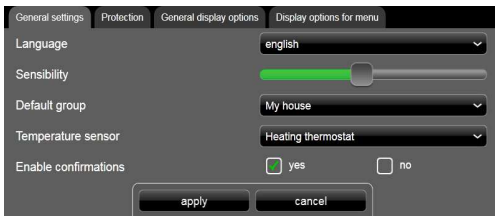
Example 1: In a family residence, the son requires access for his bedroom but not for the other rooms.

Example 2: In a hotel, it is important that the receptionist is able to manage all the rooms; however, a customer in room "X" must not be able to access or modify the settings for room "Y". Neither must he be able to visualise them.

This menu can be used to modify some of the settings entered by your installer during commissioning.



- **General settings:** This menu is used to change:



The user **Language** for the system,  
The **Sensibility** of the screen to define the scrolling sensitivity,  
The **Default group** to select the first level view,  
The **Temperature sensor** to select the temperature measurement device,  
**Enable confirmations** to activate message confirmation.

All these settings can also be modified using the **domovea** server configurator.

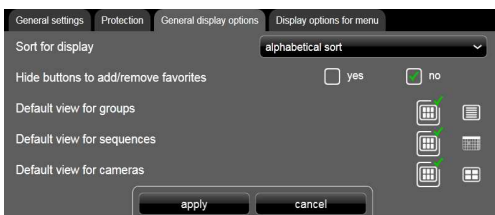
- Click on '**apply**' to confirm or '**cancel**' to return to the previous screen.
- **Protection:** This menu is used to define which program functions must be protected by a password defined during installation using the **domovea** configurator. There are three possible options:



**On client startup:** for when the system starts up,  
**On settings access:** for when the settings are modified  
**To leave default group:** for when the view changes.





Moreover, you have the possibility of authorising, or not, **Edit devices and sequences** for the scheduled actions, for example.

- Click on '**apply**' to confirm or '**cancel**' to return to the previous screen.
- **General display options:** This menu is used to define the different display modes of your installation. The following settings can be modified:



**Sort for display** of the devices and groups, used to select the display mode for the elements (by category, alphabetically or customised).  
**Hide buttons to add/remove favorites:** Used to define the display of buttons in favorites.  
**Default view for groups:** Used to define the display mode (ribbon or list).  
**Default view for sequences:** Used to define the display mode (ribbon or scheduler).  
**Default view for cameras:** Used to define the display mode (ribbon or mosaic).

Legend for the symbols

Ribbon	Mosaic	List	Scheduler
			

- Click on **'apply'** to confirm or **'cancel'** to return to the previous screen.

- **Display options for menu:** This menu is used to define the appearance of the system's toolbars:



Select the favorite buttons of your choice, which will be visible on the application view.

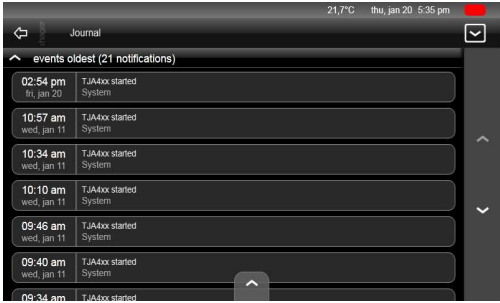
There are six possible options:

Dashboard	Groups	Sequences	Cameras	Favorites	Settings
					



- Click on **'apply'** to confirm or **'cancel'** to return to the previous screen.

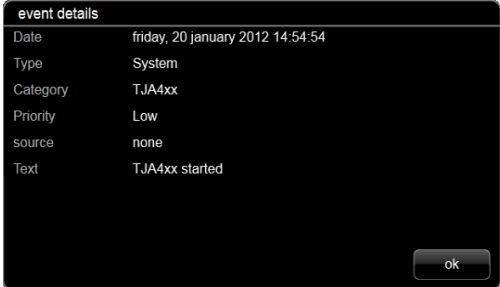
### 3.2.5 Journal

Used to consult the various events on the **domovea** server.



The screen displays the list of events beginning with the most recent.

You can move through the list using the symbols  and .



Clicking on a specific event displays a window listing its details.



Clicking on the arrow at the bottom of the screen allows you to filter the display according to the following criteria:

- Category: Automation – Server – Home Status
- Priority: Low – Medium – High
- Element type: Status – System – Update

## 3.2.6 Network – Server settings

### - IP parameters

Used to enter the settings for connection of the **domovea touch panel** on the IP network.

**Screen name:** Enter the name visible on the network

**MAC address:** Identifies the product's non-editable network

**Automatic IP address:**

- YES: the network server automatically assigns IP addresses.
- NO: you need to enter the addresses manually
- IP address: click on the grey field. A numeric box appears. Enter the address and click apply to confirm it.
- Subnet mask: same as for the IP address
- Default gateway: same as for the IP address

### - DNS server addresses

Used to enter the settings for the domain server (DNS)

**Automatic DNS servers:**

- YES: the network server automatically assigns IP addresses for the DNS servers.
- NO: you need to enter the addresses manually
- Preferred DNS server: click on the grey field. A numeric box appears. Enter the address and click apply to confirm it.
- Secondary DNS server: same as for the Preferred DNS server.

## 3.2.7 About

### - Client

Displays the client software information:

Client version

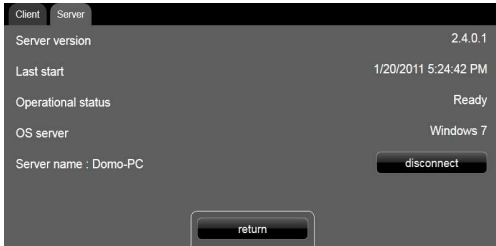
Hardware version

Local software update (USB key): Used to update the client software using a USB key.

Fetch client's journal

- Insert the USB key
- Click 'Start'. The system copies the client's journal file from the USB key.

### - Server



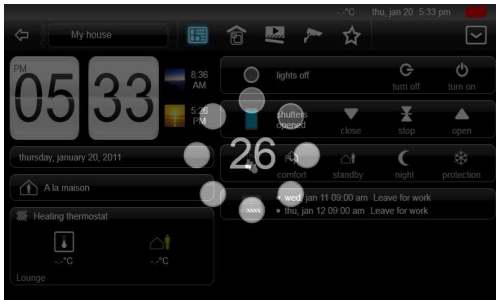
Displays the software information for the connected server:  
Server version  
Last start  
Operational status  
OS server (operating system version)


Server name: Displays the name of the currently connected server.


This view is also used to change the **domovea** server by clicking on 'disconnect'. The program will then display the screen for selection of available servers so a new connection can be made (see section 1.4).

## 3.3 Cleaning and maintenance

This function is used to disable the screen for 30 seconds during cleaning.




Press on the  symbol at the top right of the screen to access the parameter setting bar.


Press the  symbol to access the disable view function.  
An hourglass appears in the middle of the screen indicating the number of seconds remaining until the screen is enabled again. After this timed period, the screen goes back to the initial view.

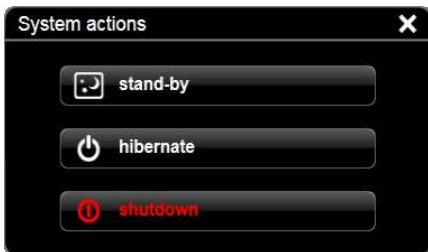
**NB: Do not use any products to clean the screen. Use only a clean, dry cloth.**

## 3.4 Exiting the program

This section is used to select the way in which the system is shutdown or put on standby.

Press on the  symbol at the top right of the screen to access the parameter setting bar.

Press the  symbol to access the view below.



You have the choice of three shutdown modes:

**'standby'**: The system stops a certain number of devices and turns off the screen and indicator LED. To restart, press on the screen.

**'hibernate'**: The system performs a backup, shuts down the system and turns off the screen and indicator LED. To restart, press on the screen.

**'shutdown'**: the system switches off completely. To restart, press the 'on/off' button on the front of the panel.