

(FR) Load Break Switch
(ZH) 负荷开关

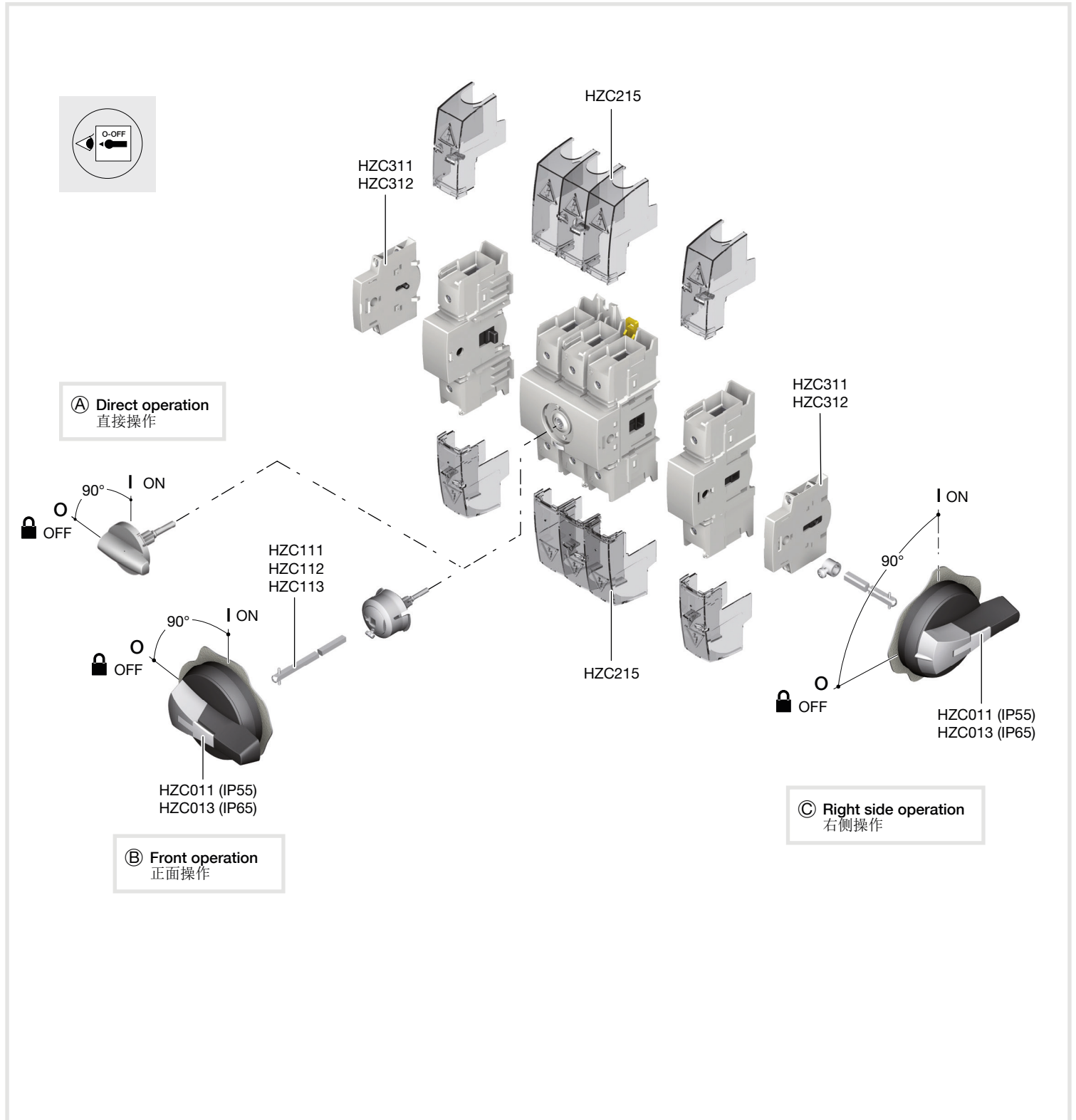
User instructions
说明书



6LE000059C

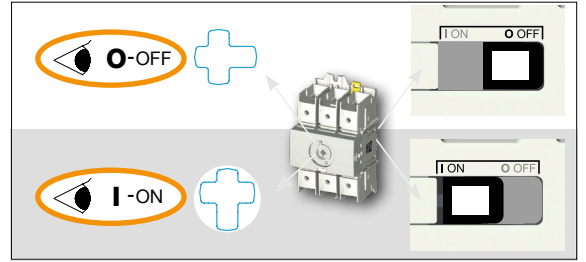
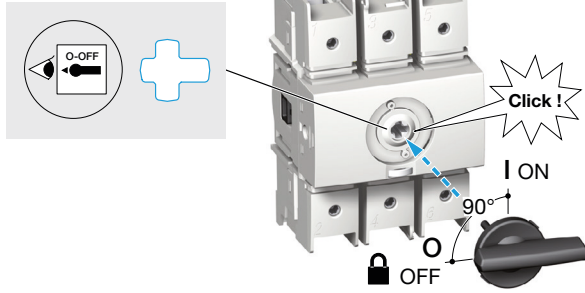
Ref. Switch 型号	Rating 额定电流	AC	Ref. Terminal shrouds 端子盖板型号
HAD310P	3 x 100 A	AC-23A	HZC215
HAD312P	3 x 125 A	AC-22A	HZC215

100A-125A

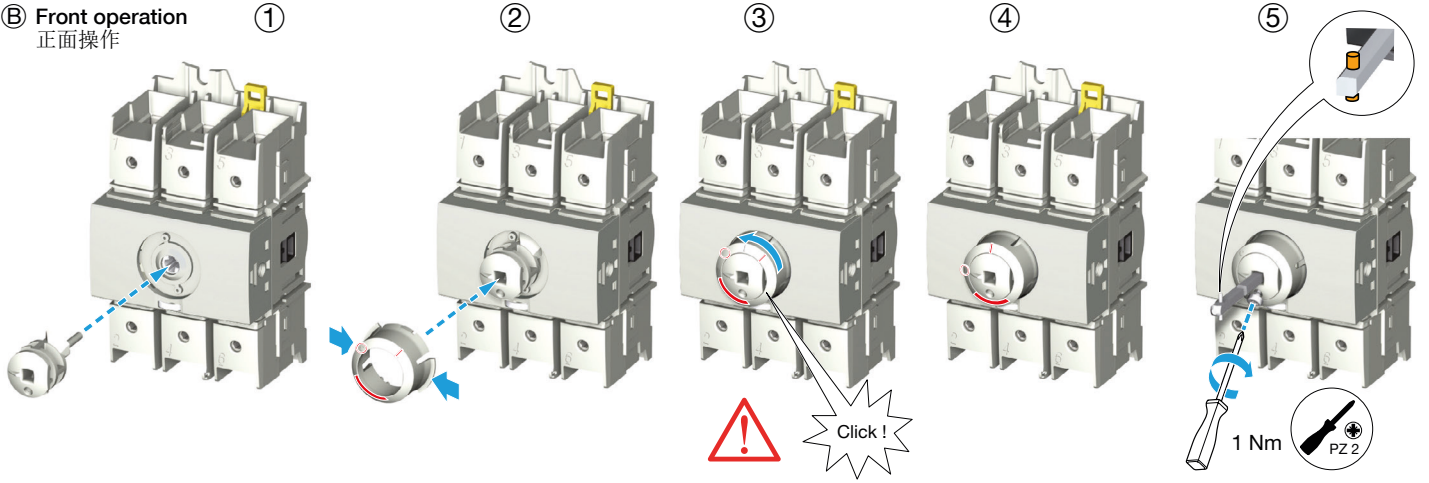


Edition 08/21 - IS 543011-C / RECTO-VERSO / S blanc offset quadri 80g/m²

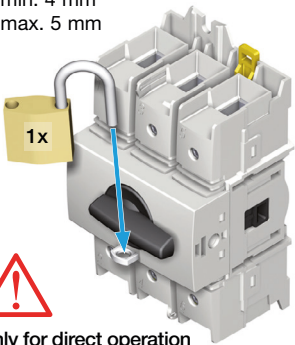
A Direct operation
正面操作



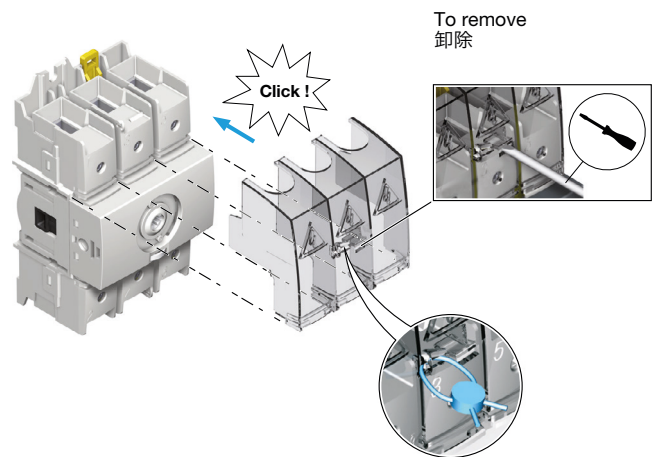
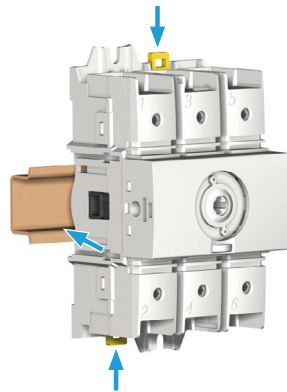
B Front operation
正面操作



Ø min. 4 mm
Ø max. 5 mm

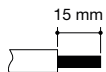


Only for direct operation
只用于直接操作



To remove
卸除

max. Ø 2 mm



10 to 35 mm²
50 to 70 mm²



4,0 Nm
5,0 Nm

