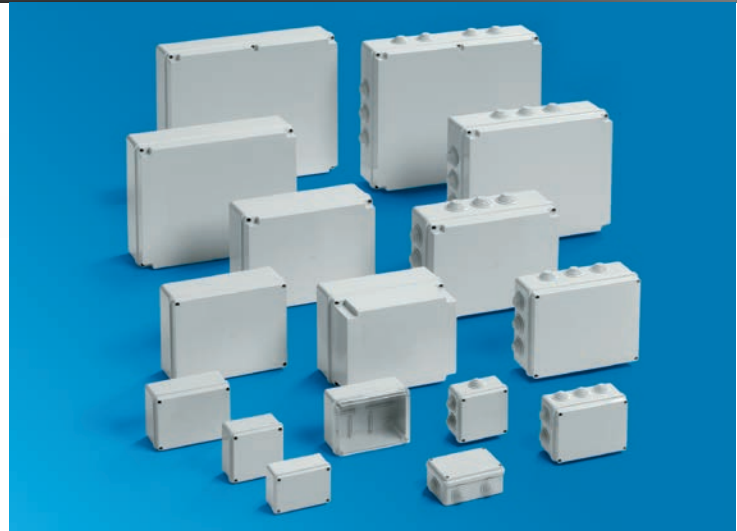


IP56 JUNCTION BOXES WITH SMOOTH SIDES

SCREW-ON LID
WITH METAL SCREWS



PRODUCT TYPE:

Wall-mounted junction boxes

APPLICATIONS:

Outdoor wall installations

DIMENSIONS:

Product Name	Dimensions mm (LxHxD)	Lid
IP56 01 VM	100x100x50	standard
IP56 02 VM	120x80x50	standard
IP56 03 VM	150x110x70	standard
IP56 03 TRASP VM	150x110x70	clear
IP56 04 VM	190x140x70	standard
IP56 04 TRASP VM	190x140x70	clear
IP56 05 VM	240x190x90	standard
IP56 05 TRASP VM	240x190x90	clear
IP56 05 CA VM	240x190x160	high
IP56 06 VM	300x220x120	standard
IP56 06 TRASP VM	300x220x120	clear
IP56 06 CA VM	300x220x180	high
IP56 07 VM	380x300x120	standard
IP56 07 TRASP VM	380x300x120	clear
IP56 07 CA VM	380x300x180	high
IP56 08 VM	460x380x120	standard
IP56 08 TRASP VM	460x380x120	clear
IP56 08 CA VM	460x380x180	high

COLOUR RANGE:

Grey RAL 7035

MATERIALS:

- ABS (Halogen Free)
- Polycarbonate (Halogen Free) only for clear lids

DECLARATION OF CONFORMITY:

All Pico range products come under the scope of the Low Voltage Directive 2014/35/UE and comply with all relevant essential requirements set in the Directive.

Compliance with the Directive is indicated by the **CE** marking and by all required symbols and markings affixed on the product, its packaging, in the assembly instructions and product catalogue, as well as by full product compliance with applicable standards.



NORMATIVE REFERENCES:

- EN 60670-1: "Boxes and enclosures for electrical accessories for household and similar fixed electrical installations - Part 1: General requirements"
- EN 60670-22: "Boxes and enclosures for electrical accessories for household and similar fixed electrical installations Part 22: Particular requirements for connecting boxes and enclosures".

Degree of protection provided by Enclosures as per EN 60529 standard "Degrees of protection provided by enclosures (IP Code)": IP56

Resistance to impact as per EN 62262 Standard "Degrees of protection provided by enclosures for electrical equipment against external mechanical impacts (IK Code)":

- Sizes 01 – 02 – 03 – 04 (all versions): IK07 (2 Joules)
- Sizes 05 – 06 – 07 – 08 (all versions): IK08 (5 Joules)

Resistance to hot-wire based test as per EN 60695-2-11 Standard "Fire hazard testing – Part 2-11: Glowing/hot-wire based test methods – Glow-wire flammability test method for end-products": passed the 650 °C test.

Electric insulation (EN 61439-1): products feature full insulation components for protection against indirect contact (Class II). However, in order to ensure protection, they must be correctly installed according to the instructions provided by the manufacturer and using the appropriate accessories (e.g. screw caps, clamps).

MINIMUM INSTALLATION AND SERVICE TEMPERATURE:

-25 °C

MAXIMUM SERVICE TEMPERATURE:

+60 °C

RATED INSULATION VOLTAGE:

750 V

RESISTANCE TO CHEMICAL AGENTS:

	Saline	Acids		Bases		Solvents				Mineral Oil
		Concentrated	Thinned	Concentrated	Thinned	Hexane	Benzoic acid	Acetone	Ethyl-alcohol	
	Resistant	Unsuitable	Resistant	Resistant	Resistant	Resistant in certain conditions	Unsuitable	Unsuitable	Resistant in certain conditions	Resistant in certain conditions

UV RESISTANCE:

yes

OTHER FEATURES:

- Rails for securing terminal-boards
- Back plate housing (Sizes 04 – 05 – 06 – 07 – 08)
- Hinged lid (Sizes 04 – 05 – 06 – 07 – 08)
- Sealable lid (Sizes 04 – 05 – 06 – 07 – 08)

MARKINGS AND CERTIFICATIONS:



CONFORMITY WITH 2011/65/CE (ROHS) DIRECTIVE:

yes

