

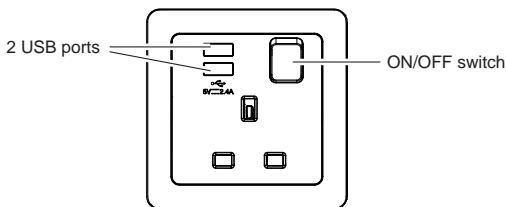
Safety instructions

Electrical equipment must only be installed and assembled by a qualified electrician in accordance with the relevant installation standards, regulations, directives and safety and accident prevention directives of the country.

Failure to comply with these installation instructions may result in damage to the device, fire or other hazards.

Function

The device combines a BS socket outlet with a twin USB port charging unit.



Socket features:

The BS socket outlet is compatible with BS 1363-1 plugs. It can be switched ON/OFF using the integrated single pole switch.

USB features:

- The twin USB port charging unit is suitable for charging most portable electronic devices connected via a USB type A plug.
- It is supplied independently of the ON/OFF switch position.
- With dynamic load recognition
- Short-circuit proof and overload proof

Correct use

- For the flush-mounted installation in standard wall boxes (recommended wall box depth ≥ 35 mm).
- Only suitable for use in indoor areas with no drip and no spray water.

Charging portable electronic devices

- Insert USB type A connector of the charging cable into one of the two USB charging port.
- i** Two portable devices can be charged simultaneously with a maximum total charging current of 2.4 A. The charging current split is determined by the devices to be charged.



CAUTION!

Use only approved charging cables and connectors.

- If the charging process is complete or shall be interrupted, plug out charging cable.

Technical data

Rated voltage:	220 ... 240 V~
Frequency:	50/60 Hz
Socket rated current:	13 A
Switch type:	single pole
Conductor cross-section of screw terminals:	min. 1 x 1.5 mm ² ... max. 2 x 4 mm ²
Distance of fixing holes:	60.3 mm
Socket compliance:	BS 1363-2 and SS 145-2
USB output:	5 V d.c.
USB output current:	max. 2.4 A
Standby power consumption of USB unit:	< 150 mW
USB compliance:	IEC 62368-1
Operating temperature:	-5 ... +45°C
Relative humidity (no condensation):	0 % ... 95%

Information for electricians

Installation and electrical connection



DANGER!

Touching live parts can result in an electric shock.

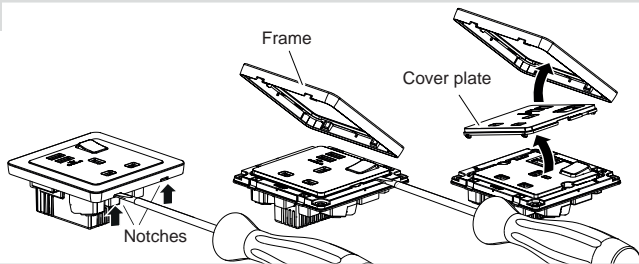
An electric shock can lead to death.

Disconnect the connecting cables before working on the device and cover all live parts in the area!

Preparing the device for installation

The device is delivered with a transparent dust protection sticker. This sticker must remain on the device during the time of installation.

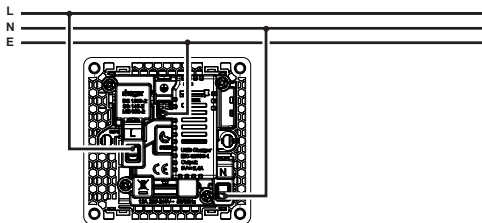
1



- Carefully loosen the frame on the notches with a flat-blade screwdriver or similar tool (1).
- Remove the cover plate also with a flat-blade screwdriver.

Connecting the device

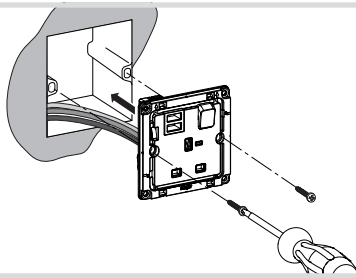
2



- Strip connection cables approx. 10 ... 12 mm.
- Wire the device according to the connection diagram (2).

Installing the device into the wall box

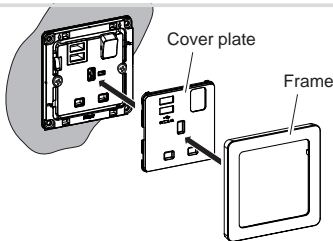
3



- After wiring, fix the device with the two screws attached into the wall box (3).

Assembling the cover plate and frame

4



- Place the cover plate in the correct position and fix with frame (4).
- Remove the dust protection sticker.

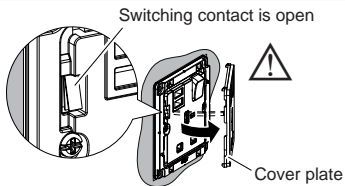
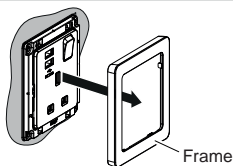
Preparing the device for insulation resistance testing



WARNING!

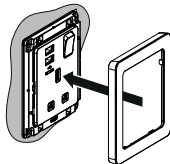
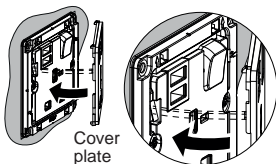
To avoid possible damage to the product or spurious insulation readings, please **DISCONNECT** the USB charging unit before carrying out insulation resistance testing (see figure below)!

Before insulation resistance testing



- Remove the frame and cover plate.
An internal switching contact opens. The USB charging unit is disconnected.

After insulation resistance testing



- After insulation resistance testing, place the cover plate in the correct position and snap it back onto the device.
The internal switching contact is closed. The USB charging unit is reconnected.
- Snap the frame back onto the device.