

Safety instructions

Electrical equipment must only be installed and assembled by a qualified electrician in accordance with the relevant installation standards, regulations, directives and safety and accident prevention directives of the country.

Failure to comply with these installation instructions may result in damage to the device, fire or other hazards.

Function

Multiple frames for 2gang to 5gang combinations of flush-mounted devices.
The frames are suitable for vertical as well as for horizontal installation.

Correct use

- For flush-mounted installation with standard connectable wall boxes.
- Only suitable for use in indoor areas with no drip and no spray water.

Technical data

For horizontal installation:

Dimensions (Width x Height)

- 2gang:	170.2 x 86 mm
- 3gang:	256.3 x 86 mm
- 4gang:	342.3 x 86 mm
- 5gang:	428.3 x 86 mm

For vertical installation:

Dimensions (Width x Height)

- 2gang:	86 x 170.2 mm
- 3gang:	86 x 256.3 mm
- 4gang:	86 x 342.3 mm
- 5gang:	86 x 428.3 mm

Information for electricians

Installation and electrical connection

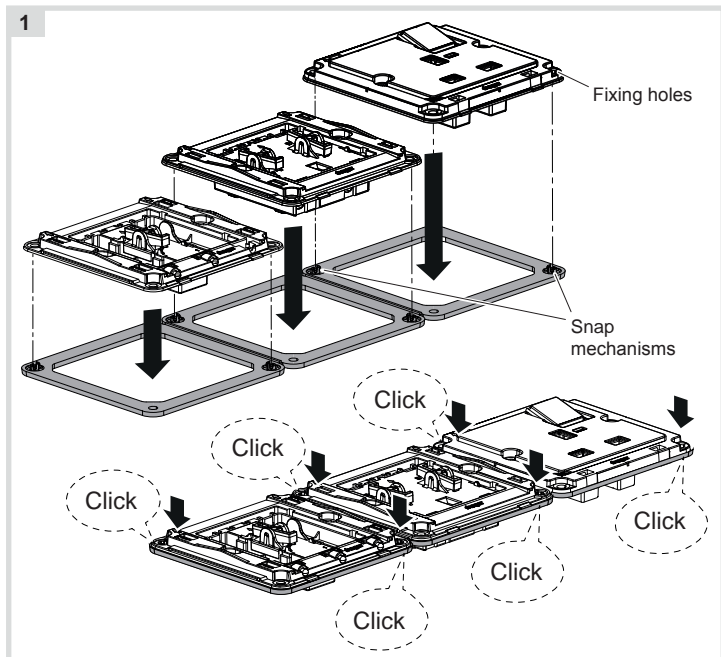
Preparing the devices for installation

- Remove cover at every single device to be combined (see installation manual of the respective device).

Connecting the devices for multiple combinations

(for example with "3gang frame (horizontal)")

For fitting of the devices the multi-gang frame has two diagonally arranged snap mechanisms (1). On the outside corners of the supporting plate the devices have corresponding fixing holes for snapping onto multi-gang frame.



- Depending on the application position the multi-gang frame horizontally or vertically. Example here: horizontal (1).
- Snap the devices one after the other in the desired order on the multi-gang frame (1).

Installing the device combination into the wall box

(for example with “3gang frame (horizontal)”)



DANGER!

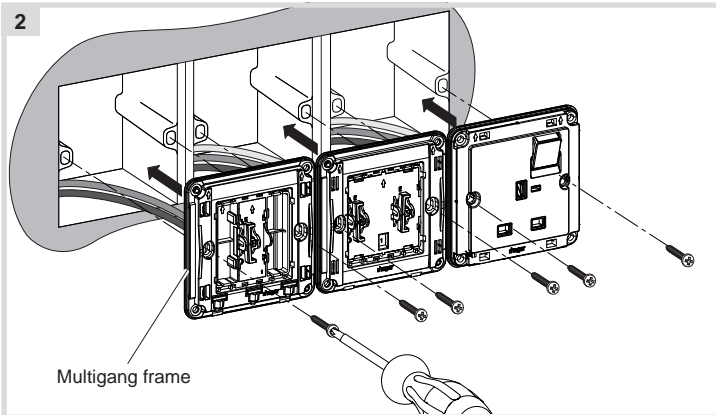
Touching live parts can result in an electric shock.

An electric shock can lead to death.

Disconnect the connecting cables before working on the device and cover all live parts in the area!

- Wire each device of the combination according to its wiring diagram (see installation manual of the respective device).

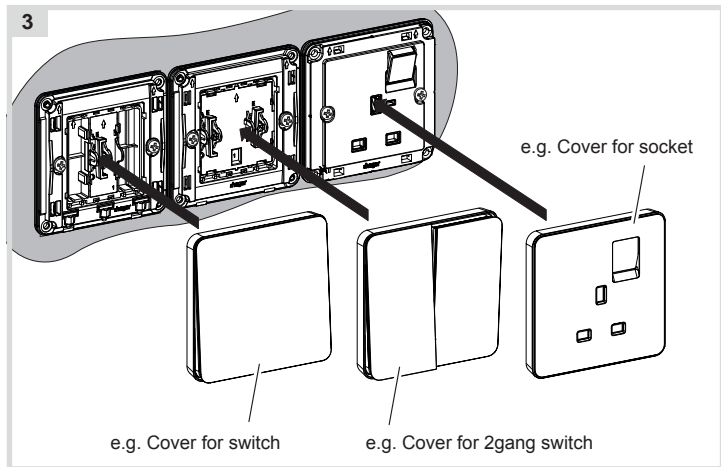
2



- After wiring, fix the device combination with the screws into the wall boxes (2).

Assembling the covers

(for example with "3gang frame (horizontal)")



- Fix the covers onto each device.