

16AX DND&MUR switch w/LED 4A DND&MUR indicator w/bell switch Hager Dream

Installation and operating
instructions

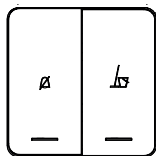
Safety instructions

Electrical equipment must only be installed and assembled by a qualified electrician in accordance with the relevant installation standards, regulations, directives and safety and accident prevention directives of the country.

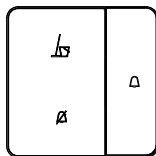
Failure to comply with these installation instructions may result in damage to the device, fire or other hazards.

Function

Both devices have been developed for electrical installations in hotel buildings. A status “**Do Not Disturb**” or “**Make Up Room**” can be activated by the hotel guest with the DND&MUR switch in the hotel room. The corresponding status message is displayed by the DND&MUR indicator outside room on the hotel corridor. Furthermore, the indicator is equipped with a bell switch that can activate a buzzer.



16AX DND&MUR
switch w/LED



4A DND&MUR
indicator w/bell switch


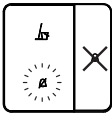
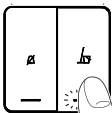

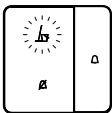


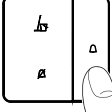
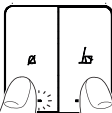
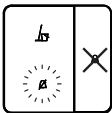
Correct use

- For the flush-mounted installation in standard wall boxes (recommended wall box depth ≥ 35 mm).
- Only suitable for use in indoor areas with no drip and no spray water.

Technical data

DND&MUR switch rating:	250 V~, 16 AX
DND&MUR indicator w/bell switch rating:	250 V~, 4 A
Conductor cross-section of screw terminals:	min. 1 x 1.5 mm ² ... max. 2 x 4 mm ²
Distance of fixing holes:	60.3 mm
Switch and bell switch compliance:	BS EN 60669-1, IEC 60669-1

Operating the devices

Inside hotel room: DND&MUR switch w/LED	On the hotel corridor: DND&MUR indicator w/bell switch
<p>"Do Not Disturb"</p>  <ul style="list-style-type: none"> - DND-LED lights up in red colour. 	 <ul style="list-style-type: none"> - DND-Symbol lights up in red colour. - MUR-LED is OFF. - Bell switch is without function.
<p>"Make Up Room"</p>  <ul style="list-style-type: none"> - MUR-LED lights up in green colour. 	 <ul style="list-style-type: none"> - MUR-Symbol lights up in green colour. - DND-LED is OFF.  <ul style="list-style-type: none"> - Bell switch can be operated to ring the buzzer/ doorbell.
<p>(No action)</p> 	 <ul style="list-style-type: none"> - DND-LED is OFF. - MUR-LED is OFF. - Bell switch can be operated to ring the buzzer/ doorbell.
<p>(If both rockers are pressed)</p>  <ul style="list-style-type: none"> - DND status has priority. - DND-LED lights up in red colour. 	 <ul style="list-style-type: none"> - DND-Symbol lights up in red colour. - MUR-LED is OFF. - Bell switch is without function.

Information for electricians

Installation and electrical connection



DANGER!

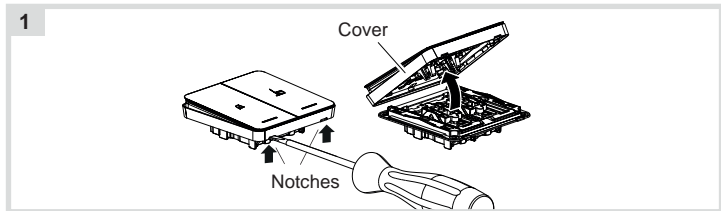
Touching live parts can result in an electric shock.

An electric shock can lead to death.

Disconnect the connecting cables before working on the device and cover all live parts in the area!

Preparing the devices for installation

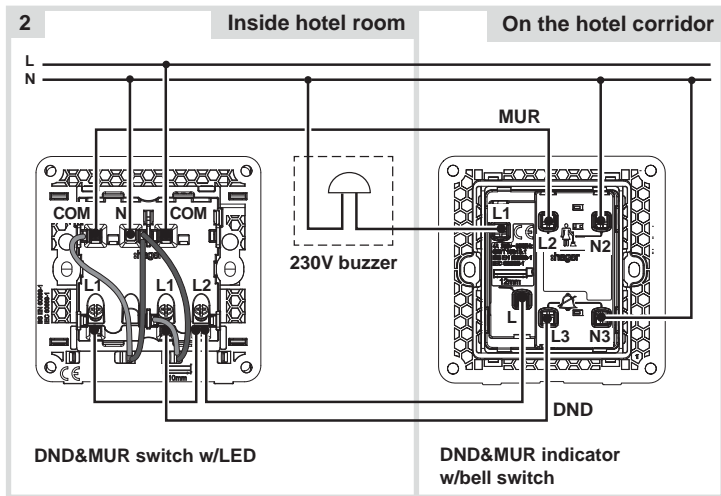
Prior to installation the covers on both devices have to be removed. Figure 1 shows this using the example of the DND&MUR switch.



- Carefully loosen the cover on the notches with a flat-blade screwdriver (1). Lift up and remove the cover.
- Remove the cover of DND&MUR indicator with bell switch in the same way.

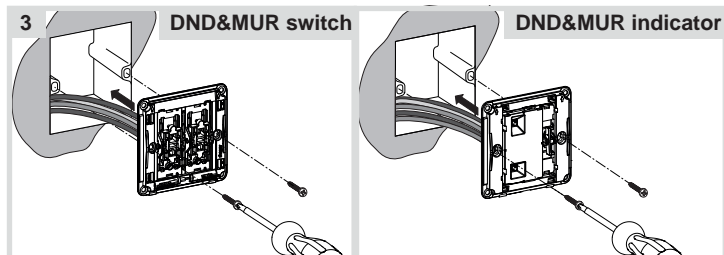
Connecting the device

Figure 2 shows the wiring of the two devices as well as the connection to a 230V buzzer.



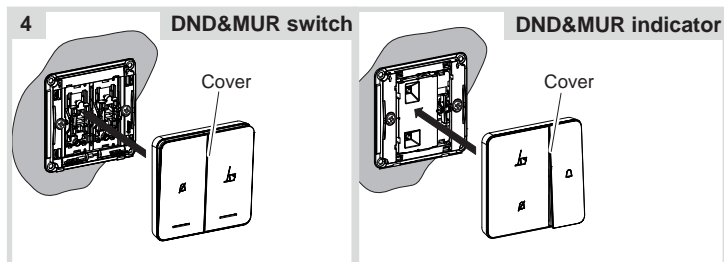
- Strip connection cables approx. 10 mm.
- Wire DND&MUR switch and DND&MUR indicator according to the connection diagram (2).

Installing the devices into the wall box



- After wiring, fix each device with the screws attached into the wall box (3).

Assembling the covers



- Snap the covers onto the devices (4).

i 2-5gang frames are available for multiple combinations.