

Safety instructions

Electrical equipment must only be installed and assembled by a qualified electrician in accordance with the relevant installation standards, regulations, directives and safety and accident prevention directives of the country.

Failure to comply with these installation instructions may result in damage to the device, fire or other hazards.

Function

Mechanical light switches and press switches for electrical installations in buildings. Every switch is equipped with LED on the bottom side, one LED for each rocker. Thus the devices are easy to locate.

Special press switches with 12V LED can be applied with room control units (RCU). They are used as guest room control switches with status LED.

Correct use

- For the flush-mounted installation in standard wall boxes (recommended wall box depth ≥ 35 mm).
- Only suitable for use in indoor areas with no drip and no spray water.

Technical data

Rated voltage:	250 V~
Frequency:	50/60 Hz
Conductor cross-section of screw terminals:	max. 3 x 1.5 mm ²
Distance of fixing holes:	60.3 mm
LED colour	warm white
Switch compliance:	BS EN 60669-1, IEC 60669-1

16AX switches 1way/2way with LED

Rated current:	max. 16 AX
----------------	------------

10A press switches with LED

Rated current:	max. 10 A
LED rated voltage:	250 V~

10A press switches with 12V LED

Rated current:	max. 10 A
LED rated voltage:	12 V DC

Information for electricians

Installation and electrical connection



DANGER!

Touching live parts can result in an electric shock.

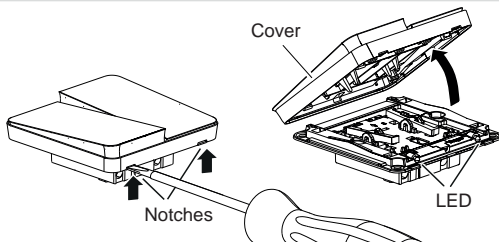
An electric shock can lead to death.

Disconnect the connecting cables before working on the device and cover all live parts in the area!

Preparing the device for installation

(for example "16AX 2gang 1way switch with LED")

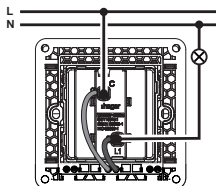
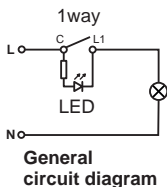
1



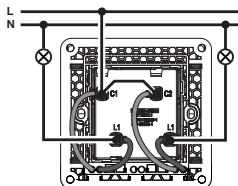
- Carefully loosen the cover on the notches with a flat-blade screwdriver (1).
- Remove the cover.

Connecting the device

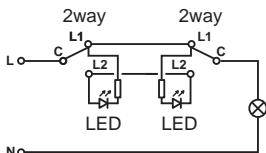
2A 1way switch / press switch with LED



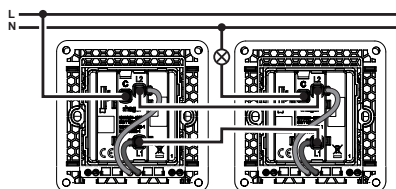
1gang 1way switch /
1gang press switch



2gang 1way switch /
2gang press switch

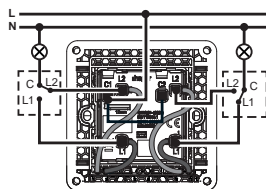


General circuit diagram

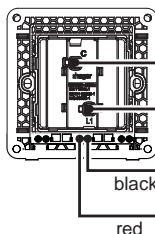


1gang 2way switch

1gang 2way switch



2gang 2way switch

Press switch
with 12V LEDRCU
(Room Control Unit)

(Example)

+12 V DC

GND

LED (-)

12 V DC

LED (+)

black

red



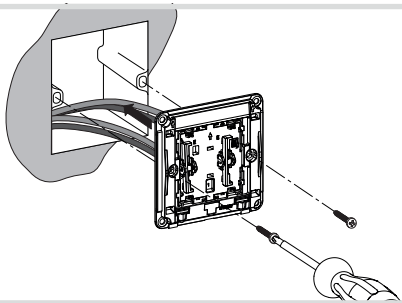
Observe installation manual of the RCU system to be connected!

- Strip connection cables approx. 10 ... 12 mm.
- Wire the switch and LED according to the appropriate wiring diagram (2A or 2B or 2C).

Installing the device into the wall box

(for example "16AX 2gang 1way switch with LED")

3

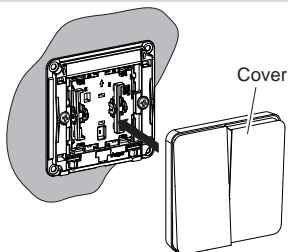


- After wiring, fix the device with the two screws attached into the wall box (3).

Assembling the cover

(for example "16AX 2gang 1way switch with LED")

4



- Snap the cover onto the device (4).

i 2-5gang frames are available for multiple combinations.