

Safety instructions

Electrical equipment must only be installed and assembled by a qualified electrician in accordance with the relevant installation standards, regulations, directives and safety and accident prevention directives of the country.

Failure to comply with these installation instructions may result in damage to the device, fire or other hazards.

Function/Correct use

- Mechanical double pole switches/control switches for electrical installations in buildings.
- For switching hard-wired electrical appliances.
- With earthing contact for bonding connected loads to protective earth.
- Control switches equipped with LED indicator per each rocker.
- For the flush-mounted installation in standard wall boxes (recommended wall box depth ≥ 35 mm). Attention: When installed in metal wall box, the box must be connected with earth directly.
- Only suitable for use in indoor areas with no drip and no spray water.

Technical data

Rated voltage:	250 V~
Frequency:	50/60 Hz
Rated current:	max. 20 AX
Conductor cross-section of screw terminals:	max. 3 x 2,5 mm ²
Distance of fixing holes:	60.3 mm
Switch compliance:	BS EN 60669-1, IEC 60669-1

Information for electricians

Installation and electrical connection



DANGER!

Touching live parts can result in an electric shock.

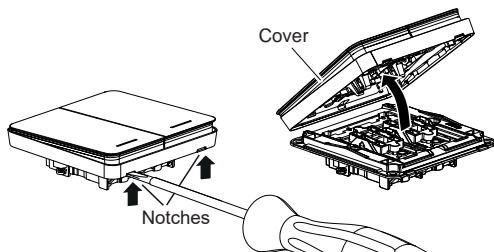
An electric shock can lead to death.

Disconnect the connecting cables before working on the device and cover all live parts in the area!

Preparing the device for installation

(for example "20AX 2gang DP switch w/LED")

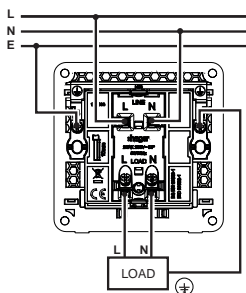
1



- Carefully loosen the cover on the notches with a flat-blade screwdriver (1).
- Remove the cover.

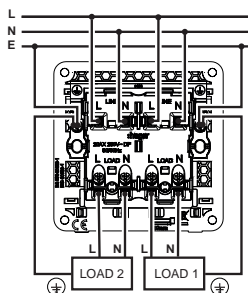
Connecting the device

2A



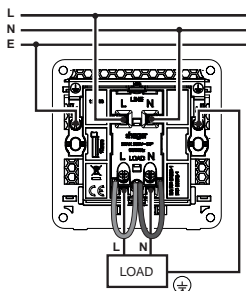
1gang DP switch

Double pole switch



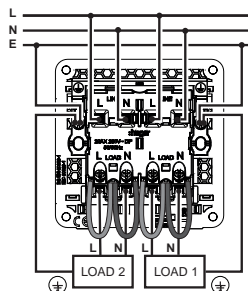
2gang DP switch

2B



1gang DP switch w/LED

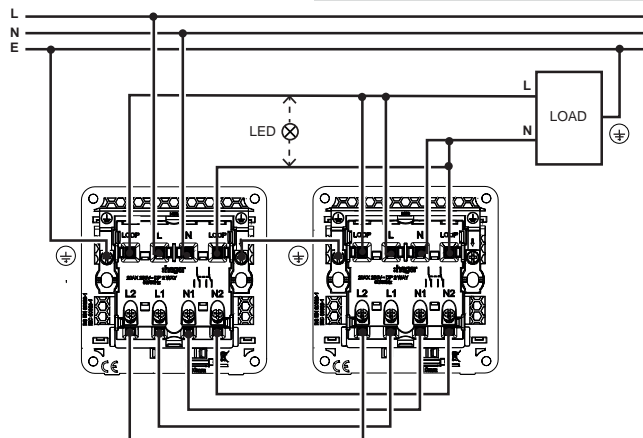
Double pole control switch



2gang DP switch w/LED

2C

2way double pole control switch



1gang 2way
DP switch w/LED

1gang 2way
DP switch w/LED

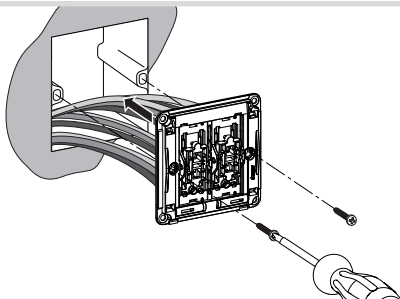
- Strip connection cables approx. 10 mm.
- Wire the switch according to the appropriate wiring diagram (2A or 2B or 2C).

i When installed in metal wall box, the box must be connected with earth directly!

Installing the device into the wall box

(for example "20AX 2gang DP switch w/LED")

3

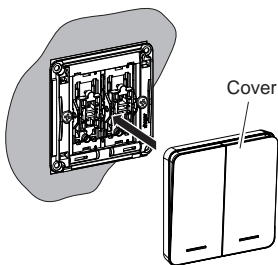


- After wiring, fix the device with the two screws attached into the wall box (3).

Assembling the cover

(for example "20AX 2gang DP switch w/LED")

4



- Snap the cover onto the device (4).

i 2-5gang frames are available for multiple combinations.