

Safety instructions

Electrical equipment must only be installed and assembled by a qualified electrician in accordance with the relevant installation standards, regulations, directives and safety and accident prevention directives of the country.

Failure to comply with these installation instructions may result in damage to the device, fire or other hazards.

Function

Multiple frames for 2gang to 5gang combinations of flush-mounted devices. Different versions for horizontal and vertical installation.

i Hager Muse: The frames are compatible with most flush-mounted devices of the design with centre plates (Width x Height) = 65 x 52 mm.

In case of centre plates 52 x 52 mm, the accomodation ring must be used.

Not compatible with centre plates 52 x 65 mm.

Correct use

- For flush-mounted installation with standard connectable wall boxes.
- Only suitable for use in indoor areas with no drip and no spray water.

Technical data

Hager Muse:

Dimensions (Width x Height)

- 2gang horizontal	172 x 86 mm
- 3gang horizontal	258 x 86 mm
- 4gang horizontal	344 x 86 mm
- 5gang horizontal	430 x 86 mm

Hager Inspire:

Dimensions (Width x Height)

- 2gang horizontal	172 x 86 mm
- 3gang horizontal	258 x 86 mm
- 4gang horizontal	344 x 86 mm
- 5gang horizontal	430 x 86 mm
- 2gang vertical	86 x 172 mm
- 3gang vertical	86 x 258 mm

Information for electricians

Installation and electrical connection

Preparing the devices for installation

- Remove frame at every single device to be combined (see installation manual of the respective device).

Hager Inspire:

- Furthermore, remove cover plate at every single device (see installation manual of the respective device).

Installing the devices into the wall boxes

(for example with "3gang frame (horizontal)")



DANGER!

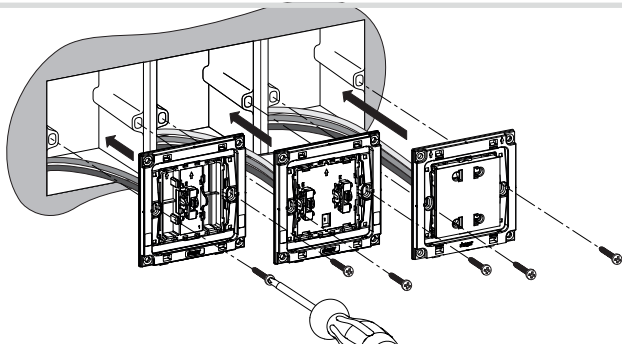
Touching live parts can result in an electric shock.

An electric shock can lead to death.

Disconnect the connecting cables before working on the device and cover all live parts in the area!

- Arrange the devices horizontally or vertically in the desired order depending on frame type. Example here: horizontal.
- Wire each device of the combination according to its wiring diagram (see installation manual of the respective device).

1

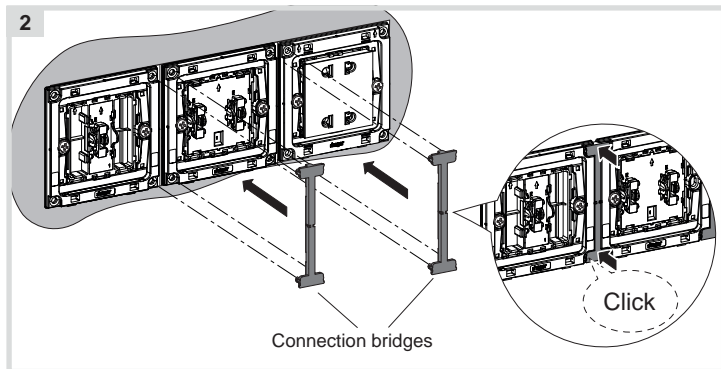


- After wiring, fix the devices with the screws into the wall boxes (1).

Connecting the devices for multiple combinations

(for example with "3gang frame (horizontal)")

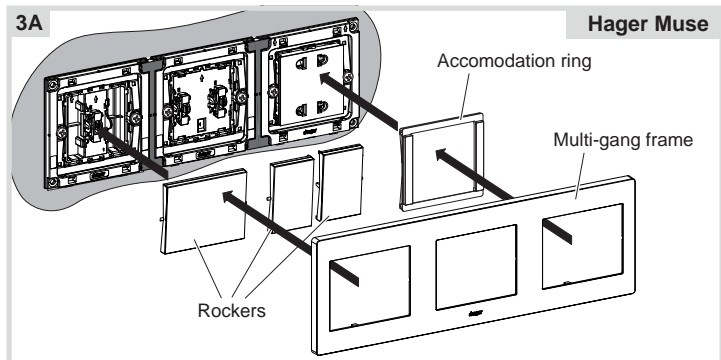
The devices are connected via the supplied connection bridges (2). On the outside corners of its supporting plate each device has corresponding holes for fixing the bridges.



- Align one bridge per connection and clip the bridges one after the other in the supporting plates of the devices (2).

Assembling the covers

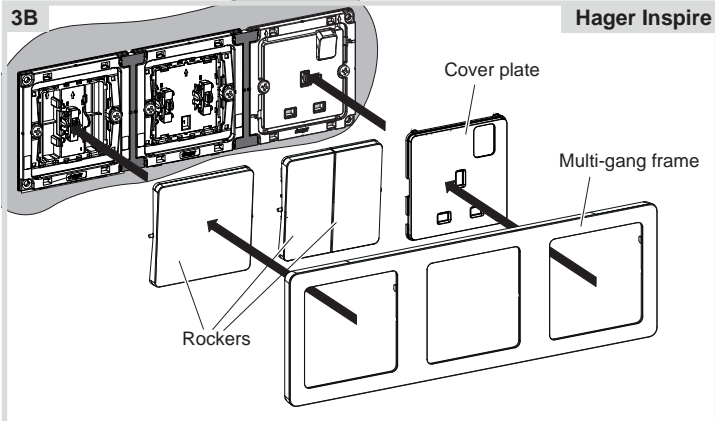
(for example with "3gang frame (horizontal)")



Hager Muse (3A):

- In case of switches, fix the rockers onto each device.

- In case of devices with centre plate 52 x 52 mm, place the **accomodation ring** onto the device (**3A**).
- Then snap the multi-gang frame onto the device combination.



Hager Inspire (3B):

- Fix the rockers and cover plates onto each device.
- Then snap the multi-gang frame onto the device combination.