

Safety instructions

Electrical equipment must only be installed and assembled by a qualified electrician in accordance with the relevant installation standards, regulations, directives and safety and accident prevention directives of the country.

Failure to comply with these installation instructions may result in damage to the device, fire or other hazards.

Function

Mechanical light switches for electrical installations in buildings.

Correct use

- For the flush-mounted installation in standard wall boxes (recommended wall box depth ≥ 35 mm).
- Only suitable for use in indoor areas with no drip and no spray water.

Technical data

Rated voltage:	250 V~
Frequency:	50/60 Hz
Conductor cross-section of screw terminals:	max. 3 x 1.5 mm ²
Distance of fixing holes:	60.3 mm
Switch compliance:	BS EN 60669-1, IEC 60669-1

16AX switches 1way/2way

Rated current:	max. 16 AX
----------------	------------

10AX intermediate switch

Rated current:	max. 10 AX
----------------	------------

Information for electricians

Installation and electrical connection



DANGER!

Touching live parts can result in an electric shock.

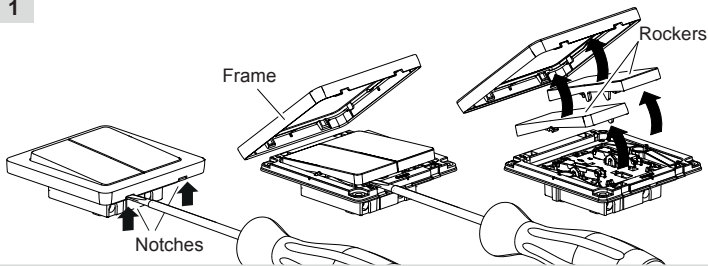
An electric shock can lead to death.

Disconnect the connecting cables before working on the device and cover all live parts in the area!

Preparing the device for installation

(for example "16AX 2gang 1way switch")

1

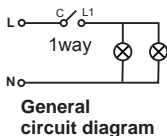


- Carefully loosen the frame on the notches with a flat-blade screwdriver. Lift up and remove the frame (1).
- Remove the rockers also with a flat-blade screwdriver.

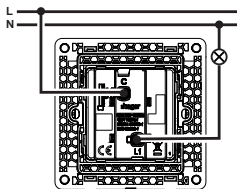
Connecting the device

2A

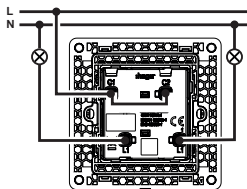
1way switch



General
circuit diagram



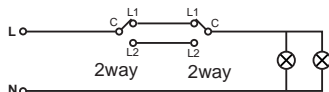
1gang 1way
switch



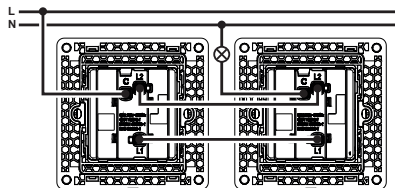
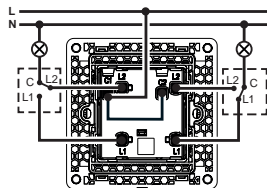
2gang 1way
switch

2B

2way switch

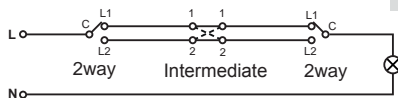


General circuit diagram

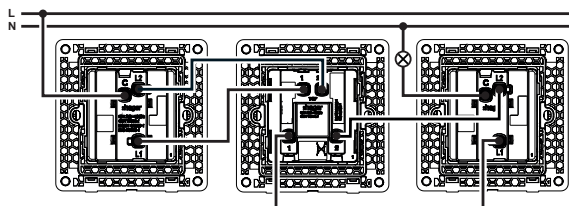
1gang 2way
switch1gang 2way
switch2gang 2way
switch

2C

Intermediate switch



General circuit diagram

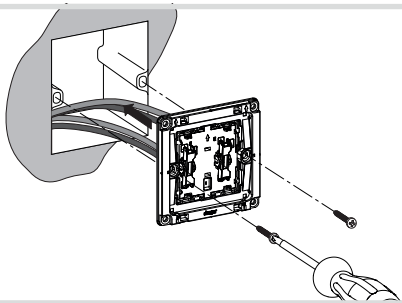
1gang 2way
switchIntermediate
switch1gang 2way
switch

- Strip connection cables approx. 10 ... 12 mm.
- Wire the switch according to the appropriate wiring diagram (2A or 2B or 2C).

Installing the device into the wall box

(for example "16AX 2gang 1way switch")

3

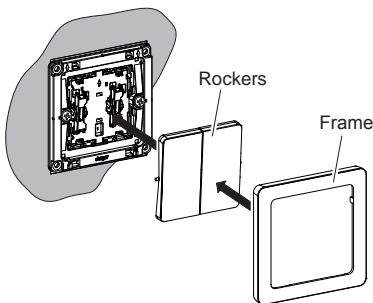


- After wiring, fix the device with the two screws attached into the wall box (3).

Assembling the rockers and frame

(for example "16AX 2gang 1way switch")

4



- Fix the rockers and frame onto the device (4).



2-5gang frames are available for multiple combinations.