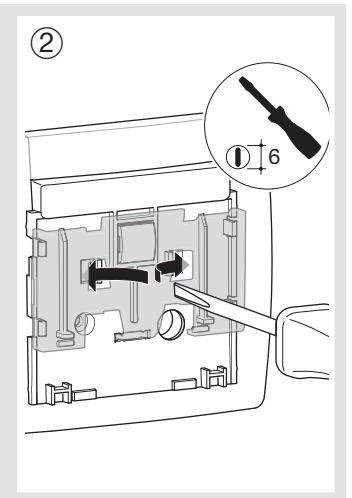
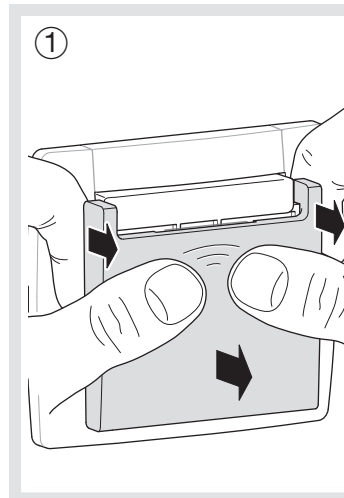
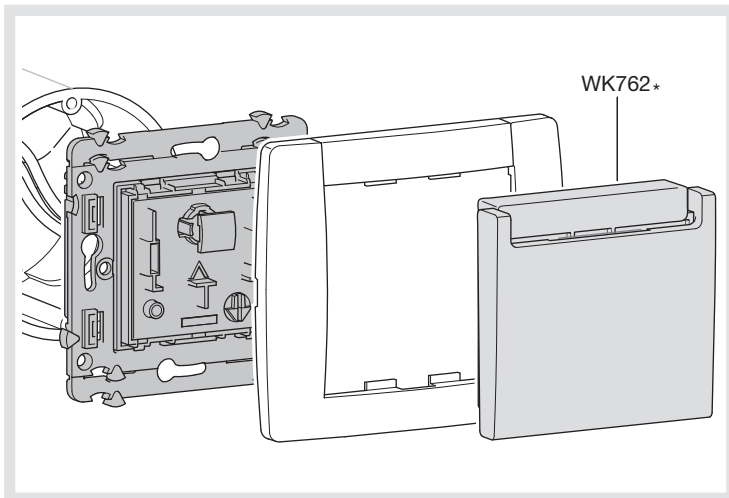


- (FR) Interrupteur à carte
- (GB) Hotel card
- (DE) Hotel Karte

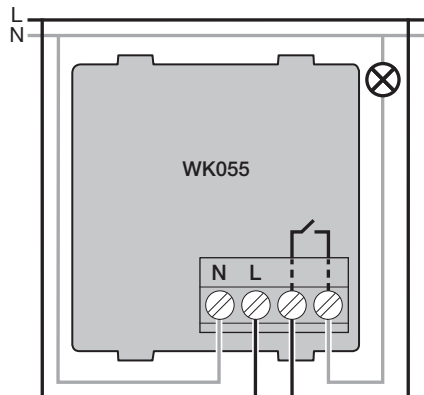
Notice d'instructions
User instructions
Bedienungsanleitung

WK055 kallysta


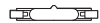

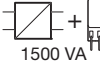



Montage / Assembly / Montage



Connexion Connection Steuerung



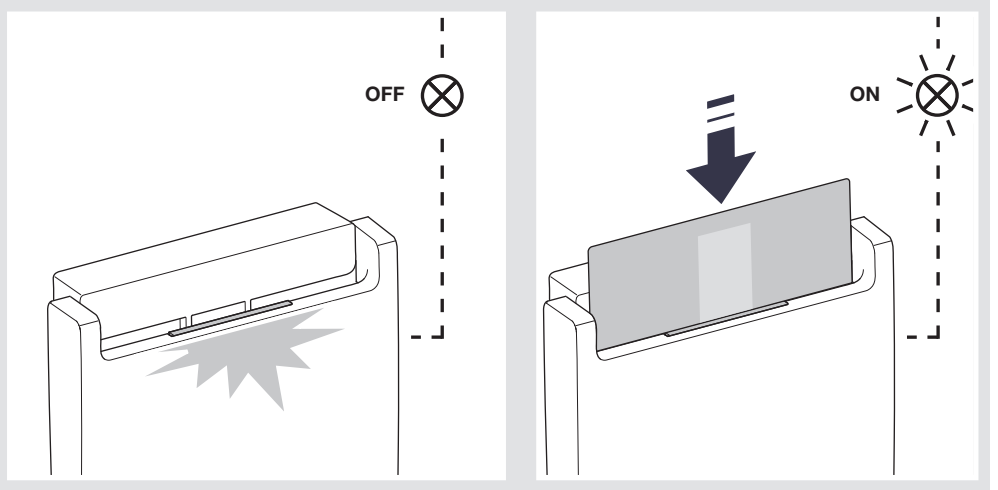
Type de charge Load type Lasttypen

Charge résistive Resistive load Ohmsche Last	 10A AC1
Lampes halogènes Halogen lamps Halogenlampen	 1500 W
Transformateur ferromagnétique Conventional transformer Konventioneller Transformator	 1500 VA
Transformateur électronique Electronic transformer Elektronischer Transformator	 1500 VA
Tubes fluorescents Fluorescent tubes Leuchtstofflampen	 1500 VA
Lampe fluocompacte Compact fluorescent lamp (CFL) Kompaktleuchtstofflampe	 500 W
Moteur Motor Elektro-Motor	 Cos φ = 0,6 6A

Caractéristiques techniques Technical characteristics Technische Daten

Tension d'alimentation Supply voltage Betriebsspannung	230 V +10% / -15% 50 / 60 Hz
Relais de sortie Output relay Schaltleistung	10A AC1
Capacité des bornes Connection capacity Anschlusskapazität	2 x 2,5 mm ²
T° de fonctionnement Operating temperature Betriebstemperatur	-5°C -> +50°C
T° de stockage Storage temperature Lagertemperatur	-25°C -> +70°C

Fonctionnement
Working principle
Funktionsprinzip



Temporisation
Time delay
Verzögerungszeit

