

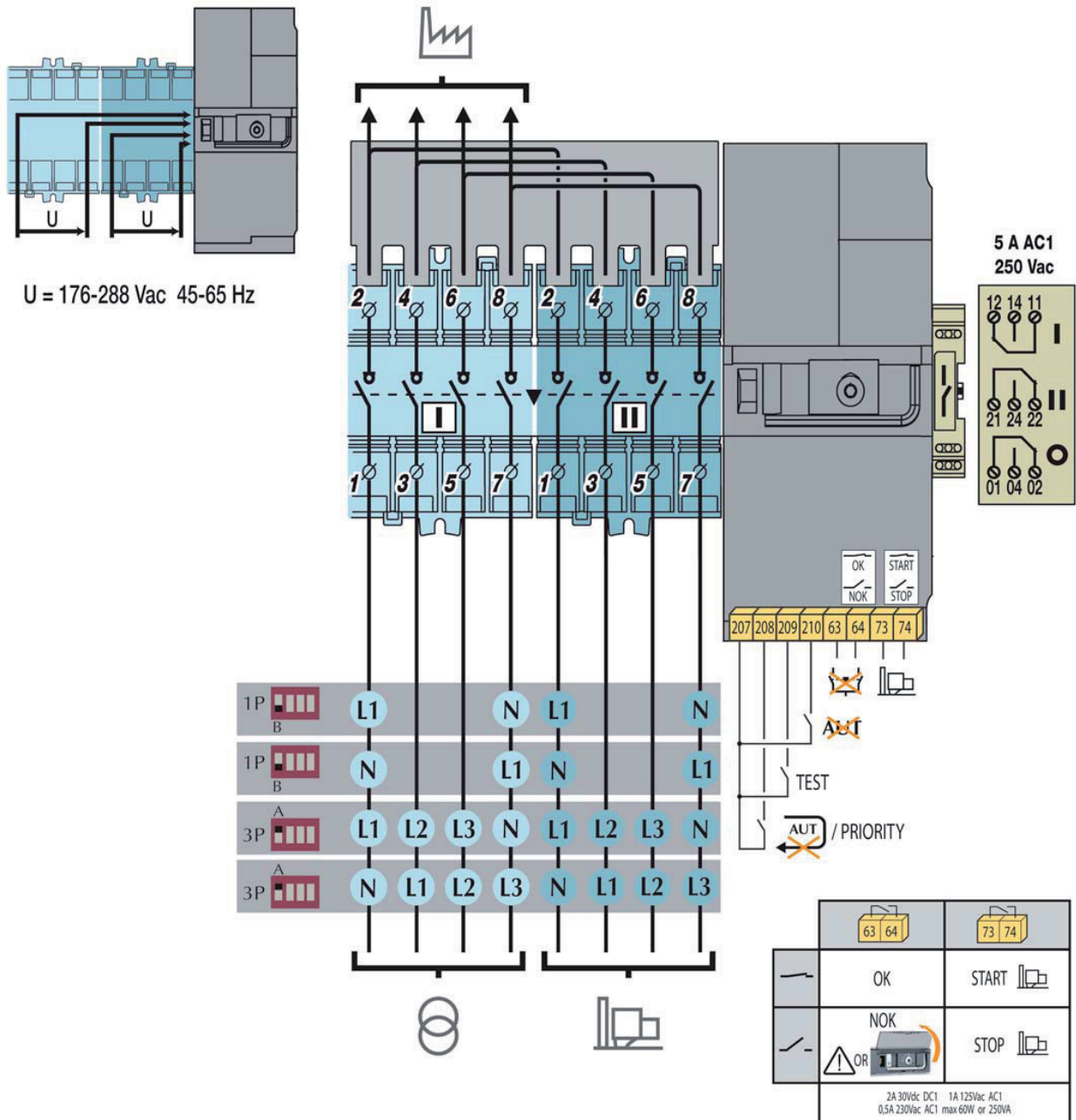


- JK140ATS - 40A Enclosed ATS unit
- JK163ATS - 63A Enclosed ATS unit
- JK180ATS - 80A Enclosed ATS unit
- JK1100ATS - 100A Enclosed ATS unit
- JK1125ATS - 125A Enclosed ATS unit

CAUTION

This product has been designed for environment A. Use of this product in environment B may cause unwanted electromagnetic disturbances in which case the user may be required to take adequate mitigation measures.

This product is to be used in the final circuit within an electrical system (ie appliance / equipment level) only.



Ref : HIZ400 125 A ≤
Ref : HIZ401 = 160 A

10 to 70 mm²
 # 8 to # 00 AWG
 6 to 50 mm²
 # 10 to # 00 AWG
 15 mm / 0,59"

44,1 lb-in 5,0 Nm

OK

⚠

Ref : HZC218

⚠

Ref : HZI230

0,5 to 1,5 mm²
 # 20 to # 14 AWG
 0,5 to 1,0 mm²
 # 20 to # 16 AWG
 6 mm / 0,236"

10 to 70 mm²
 # 8 to # 00 AWG
 6 to 50 mm²
 # 10 to # 00 AWG
 15 mm / 0,59"

3,97 lb-in 0,45Nm

44,1 lb-in 5,0 Nm

3,97 lb-in 0,5 Nm

hygrometry :
 * 80% humidity without condensation at 5° C
 * 95% humidity with condensation at 40° C

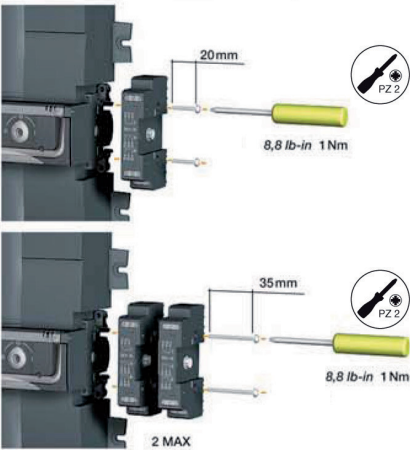
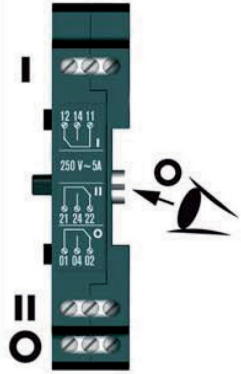
altitude :
 max 2 000 m without de-rating

temperature :
 * -10 +40° C without de-rating
 * -20 +70° C with de-rating

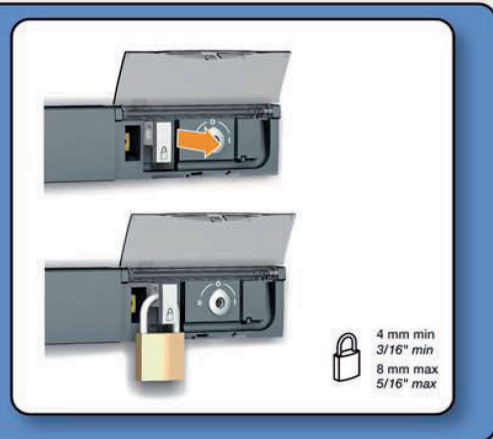
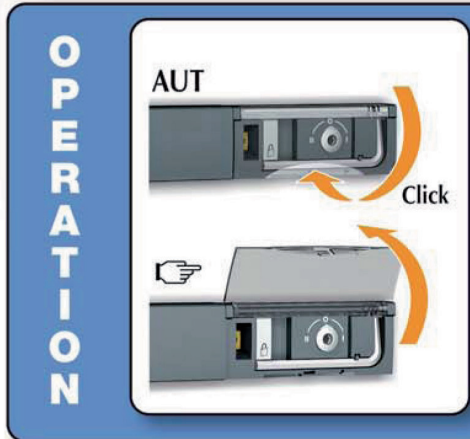
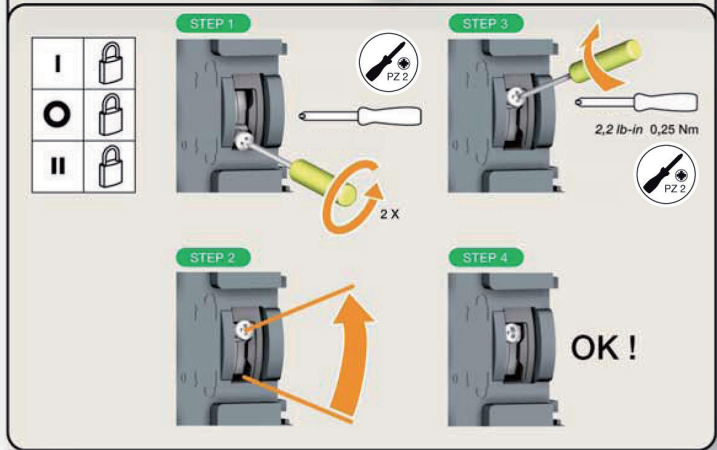
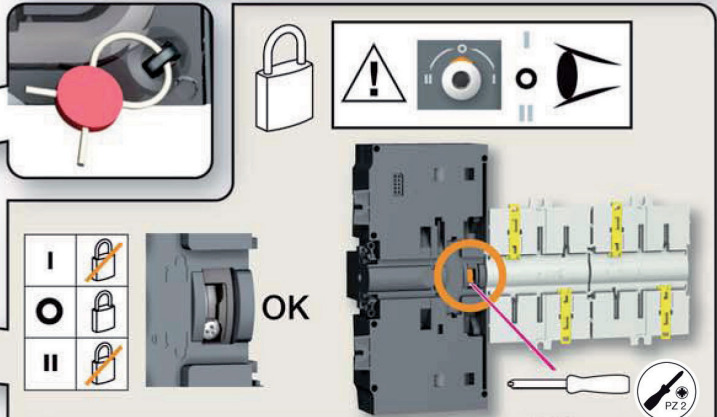
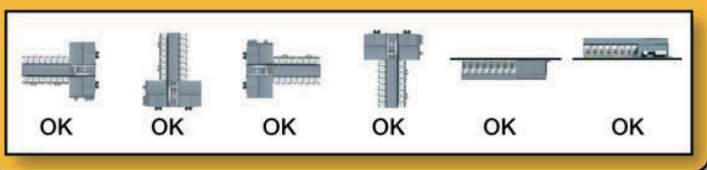
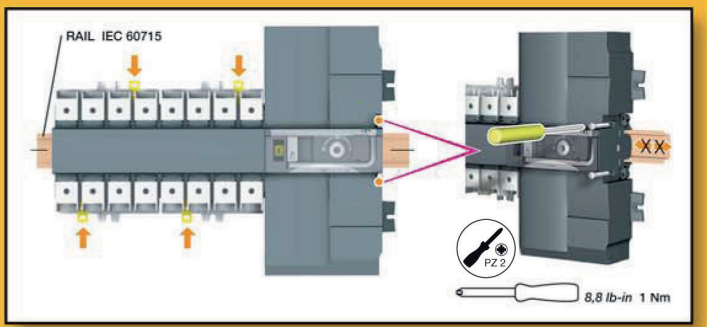
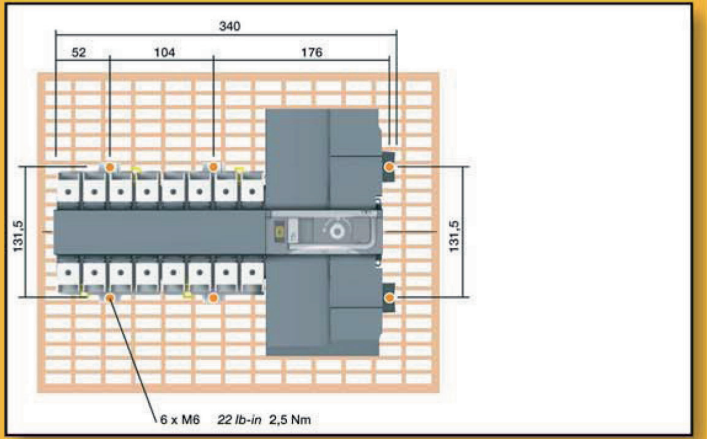
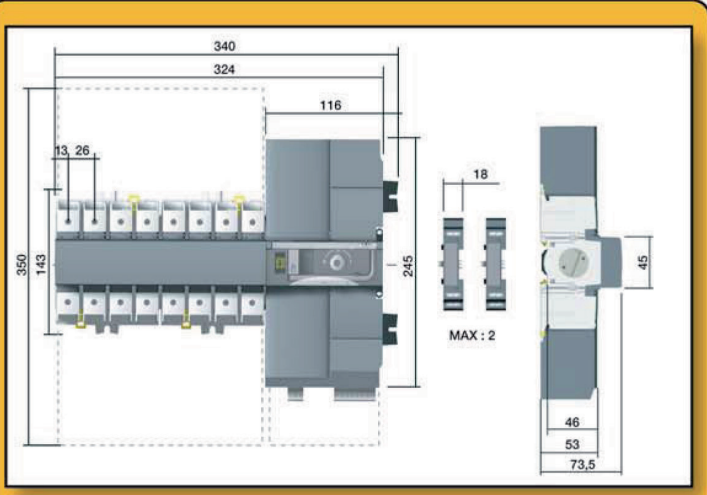
mass : 5 kg

storage :
 * temperature -20 to +70° C
 * period : 1 year max

Ref : HZI300



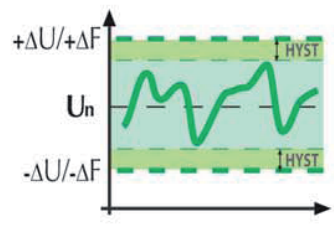
- 0,5 to 2,5 mm²
20 to # 14 AWG
- 0,5 to 1,5 mm²
20 to # 16 AWG
- 6 mm / 0,236"
- 4,4 lb-in 0,5 Nm



STEP 1



STEP 3



Un (P-P) : 380 → 420 Vac
Un (P-N) : 220 → 240 Vac

ΔU : 5 → 20%
ΔF : 3 → 10%
HYST : 20% ΔU/F

STEP 2

Terminal and mode selection options:

- A: 3P
- B: 1P
- C: 50 Hz
- D: 60 Hz
- E: [Switch]
- F: [Switch]

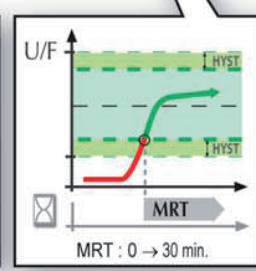
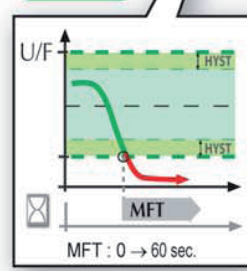
MODE selection options:

- MODE 1: [Icon]
- MODE 2: [Icon]
- MODE 3: [Icon]
- MODE 4: [Icon]

Control panel legend:

- ON (Green dot)
- OFF (Black dot)
- Waveform icon
- FAULT (Triangle)
- OK (Hand)
- WAIT! (Exclamation mark)
- AUT (Arrow)

STEP 4

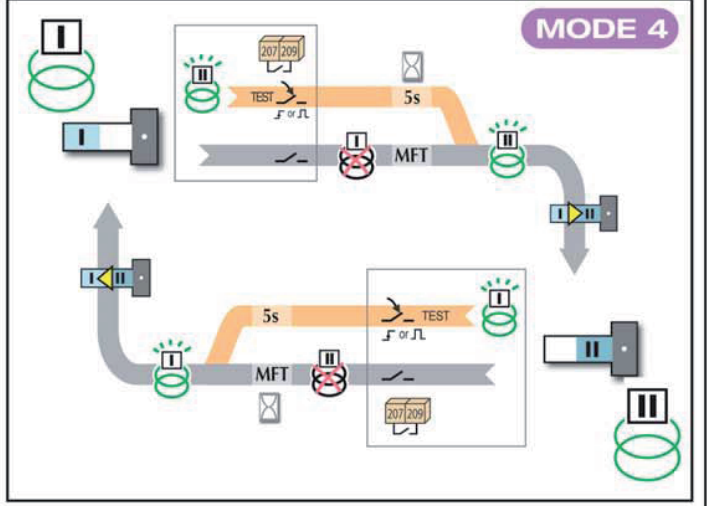
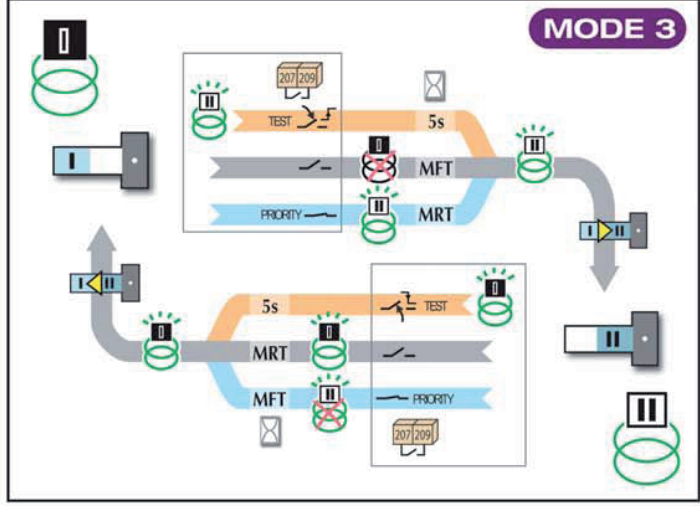
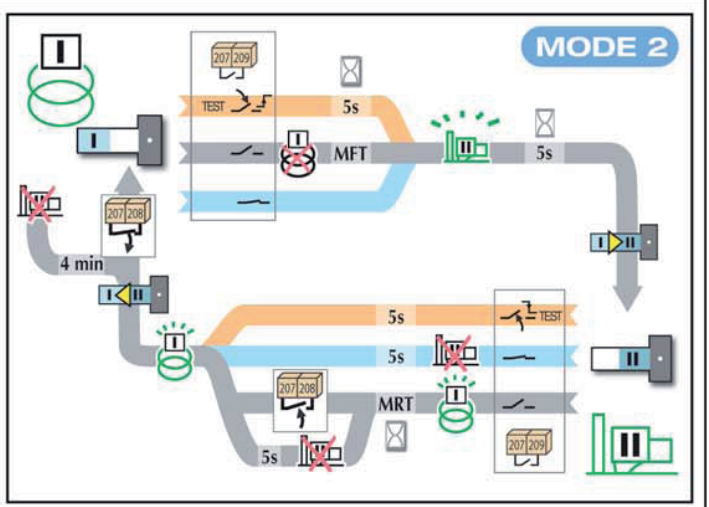
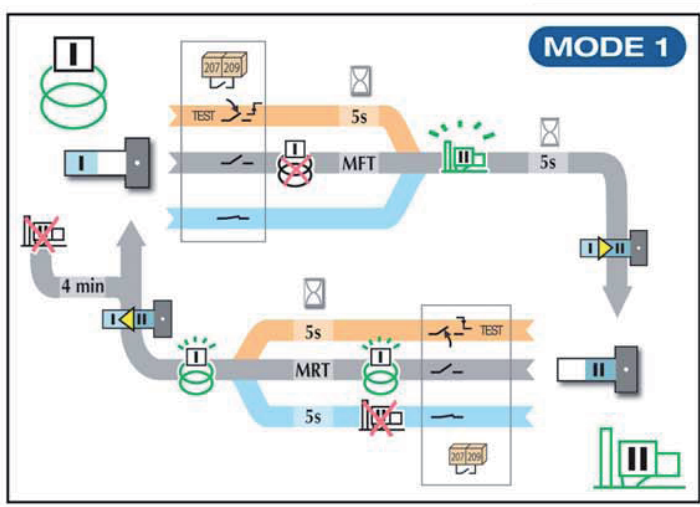


Control panel legend for modes:

- ON (Green dot)
- OFF (Black dot)
- Waveform icon
- TEST MODE 1 (Icon)
- TEST MODE 2 (Icon)

Operational mode indicators:

- NORMAL (Grey bar)
- PRIORITY (Blue bar)
- TEST (Orange bar)



Interface Characteristics

Rated & operational voltage (U_n / U_e)

415V a.c. 50Hz

Rated insulation voltage (U_i)

690V a.c. 50Hz (Power Circuits) / 300V (Control Circuits)

Rated impulse withstand voltage (U_{imp})

6kV (Power Circuits) / 2.5kV (Control Circuits)

Rated current of the Assembly / Circuit (I_{nA}) / (I_{nC})

125A max

Rated short-time withstand current (I_{cw})

7kA / 0.3 secs & 4kA / 1.0 secs

Rated conditional short-circuit current of the ASSEMBLY (I_{cc})

50kA rms prospective conditional (T.0 gG fuses)

Rated diversity factor (RDF)

1

Rated frequency (f_n)

50 Hz

Overvoltage category

II

Pollution degree

3

Intended locations

Indoor use only

Stationary ASSEMBLY

Degree of protection

IP30 with Door Closed

IP2XC with Door Open

Intended use

Distribution boards intended to be operated by ordinary persons

Electromagnetic compatibility (EMC) classification

EMC Environment A

External design

Wall-mounted, surface type, enclosed assembly.

Mechanical impact protection

IK05

The type of construction

Fixed parts

DBO Type

Type B DBO

Types of system earthing for which the ASSEMBLY is designed

TNC-S, TN-S and TT when installed in an electrical system conforming to BS 7671

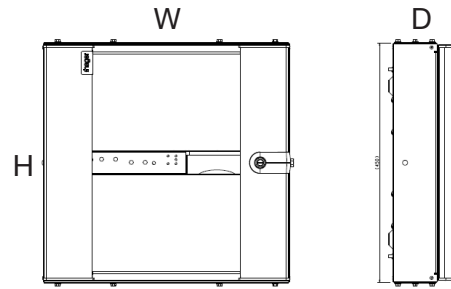
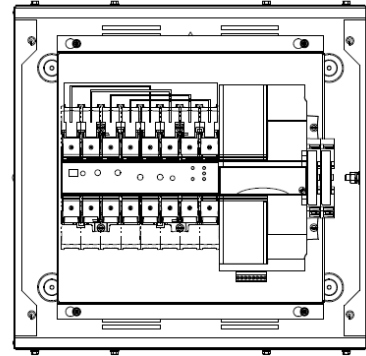
Preventative Maintenance

It is recommended to operate the product at least once a year

I - O - II - O - I

Note:

Maintenance should be planned carefully and carried out by qualified and authorised personnel. Consideration of the critical level and application where the product is installed should form an essential and integral part of the maintenance plan. Good engineering practice is imperative whilst all necessary precautions must be taken to ensure that the intervention (whether directly or indirectly) remains safe in all aspects.



Designation	H	W	D	Weight (kg)
JK140ATS	450	465	132.5	10.5
JK163ATS	450	465	132.5	10.5
JK180ATS	450	465	132.5	10.5
JK100ATS	450	465	132.5	10.5
JK125ATS	450	465	132.5	10.5

Warranty

This distribution board is offered with a 24 month warranty against defective material or manufacture. If a warranty claim is necessary, please call the technical support number given at the bottom of the page and we will be pleased to help.



The use of a Megohmmeter is prohibited on this product as the connection terminals are intrinsically connected to the sensing circuit.

All product(s) must be installed by a suitably competent electrician giving consideration to their intended use and in accordance with the current edition of BS 7671 (IET Wiring Regulations).

The Electricity at Work regulations and the Health and Safety at Work Act shall be complied with.

Only equipment and arrangements specified in Hager's technical documentation / catalogue shall be used

Install in the vertical plane only.

Notice:

To prevent potential overheating from loose connections the installer shall check connections are tightened to the torque levels stated in these instructions prior to energising this board. This check should include factory made connections which may have loosened in transit.