

Safety instructions

Electrical equipment must only be installed and assembled by a qualified electrician in accordance with the relevant installation standards, regulations, directives and safety and accident prevention directives of the country.

The installer must have sufficient specialised knowledge of electroacoustics, especially of 100 Volt technology for PA applications.

Failure to comply with these instructions may result in damage to the PA system, fire or other hazards.

Function

Volume control for PA systems in hotels, residences, department stores and similar buildings. For setting the volume in 5 levels. A priority circuit for central announcements and acoustic danger signals can be realised via the integrated priority relay. The relay can be activated via a 24V DC voltage.

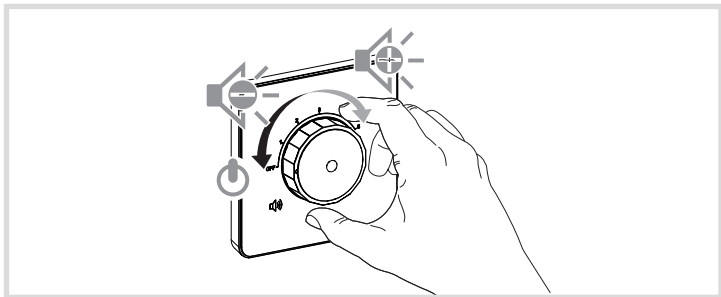
Correct use

- Suitable for PA systems with 100 Volt technology.
- For the flush-mounted installation in standard wall boxes (recommended wall box depth ≥ 35 mm).
- Only suitable for use in indoor areas with no drip and no spray water.

Technical data

Rated voltage (IN-COM / OUT-COM):	max. 100 V
Frequency range:	100 Hz ... 20 kHz
Power rating (OUT):	max. 6 W RMS
Priority relay rating:	24 V DC
Conductor cross-section of screw terminals:	max. 2 x 1.5 mm ²
Distance of fixing holes:	60.3 mm
Operating temperature:	-5 ... +45 °C
Relative humidity (without condensation):	5 ... 95 % (at 25 °C)

Operating the device



The volume can be set in 5 levels via the rotary control:
OFF - 1 - 2 - 3 - 4 - 5.

i If the priority relay is activated, important messages are played at maximum volume even if the rotary control is in the OFF position or a low volume level has been set.

Information for electricians

Installation and electrical connection



DANGER!

Hazard due to electric shock!

Hazardous contact voltage up to approx. 100V.

Make absolutely sure that the PA system is switched off completely before working on the device!

Also disconnect all other live cables in immediate vicinity!



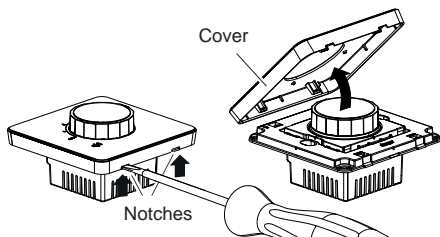
ATTENTION!

Risk of destruction due to overload of the connected power amplifier!

The maximum rated load capacity of the volume control must not be exceeded by the connected loudspeakers!

Preparing the device for installation

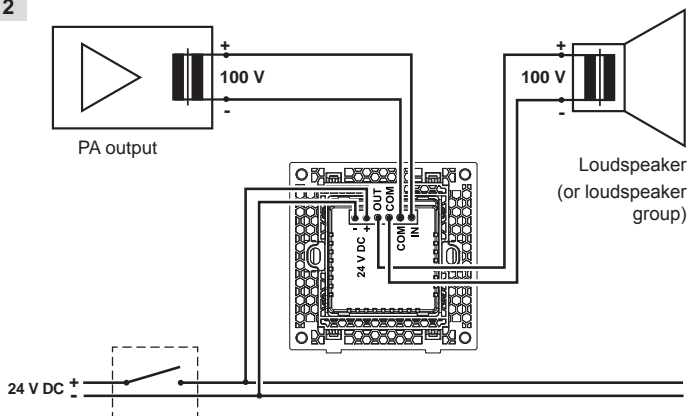
1



- Carefully loosen the cover on the notches with a flat-blade screwdriver (1).
- Lift up and remove the cover.

Connecting the device

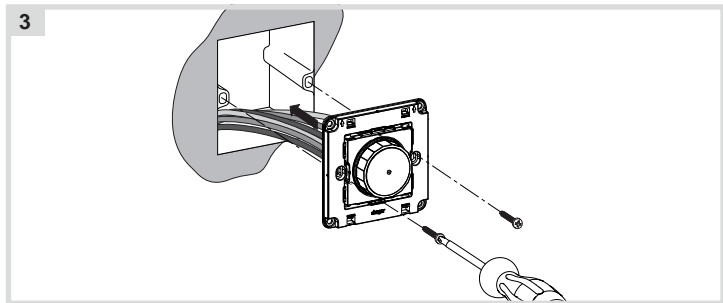
2



- Strip connection cables approx. 10 ... 15 mm.
- Wire the audio switch according to the connection diagram (2).

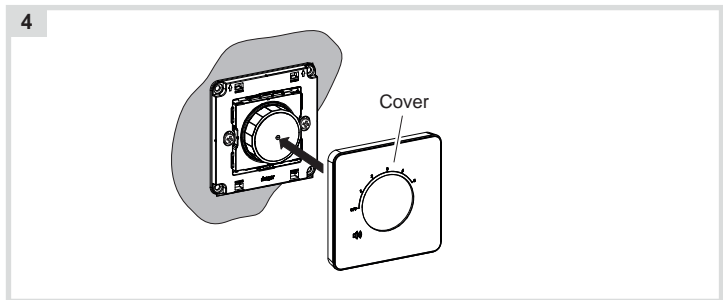
Installing the device into the wall box

i When choosing the installation location make sure to maintain sufficient distance to possible sources of interference, e.g. dimmers.



- After wiring, fix the device with the two screws attached into the wall box (3).

Assembling the cover



- Place the cover in the correct position and snap it onto the device (4).

i 2-5gang frames are available for multiple combinations.