

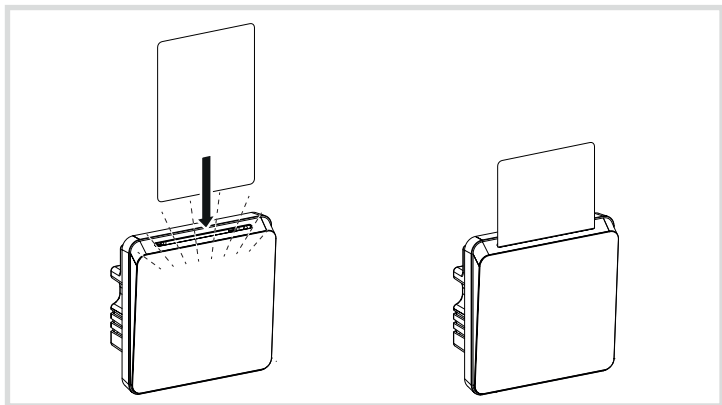
## Safety instructions

Electrical equipment must only be installed and assembled by a qualified electrician in accordance with the relevant installation standards, regulations, directives and safety and accident prevention directives of the country.

Failure to comply with these installation instructions may result in damage to the device, fire or other hazards.

## Function

The key card switch is used for central switching on of electric loads by inserting a key card as well as for storage of the key card. The key card switch is installed in the entrance area. When the key card is removed the connected loads will be switched off automatically after the delay time has expired (approx. 30 seconds) and the LED orientation light of the key card switch is switched on.



**i** The key card switch RFID works exclusively with the RFID key card programmed for this purpose.

## Correct use

- Switching of incandescent lamps, high-voltage halogen lamps, fluorescent lamps, 230 V LED lamps as well as dimmable electronic transformers (marked with L, C) with halogen lamps.
- For the flush-mounted installation in standard wall boxes (recommended wall box depth  $\geq 35$  mm).
- Only suitable for use in indoor areas with no drip and no spray water.

## Technical data

Rated voltage:	230 V~
Frequency:	50/60 Hz
Rated current:	16 A
Delay time:	30 s (+/- 10 s)
Power consumption (standby):	< 1.5 W
Contact type:	relay, 1 normally-open contact
Conductor cross-section of screw terminals:	max. 3 x 1.5 mm <sup>2</sup>
Distance of fixing holes:	60.3 mm
Operating temperature:	-5 ... +45°C
Relative humidity (without condensation):	5 ... 95 % (at 25 °C)
Standards:	BS EN 60669-2-1, IEC 60669-2-1



### WARNING!

To avoid possible damage to the product or spurious insulation readings, please **DISCONNECT** the product before carrying out insulation resistance testing!

## Information for electricians

### Installation and electrical connection



### DANGER!

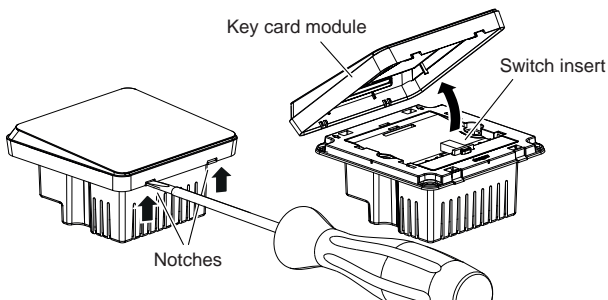
Touching live parts can result in an electric shock.

An electric shock can lead to death.

Disconnect the connecting cables before working on the device and cover all live parts in the area!

## Preparing the device for installation

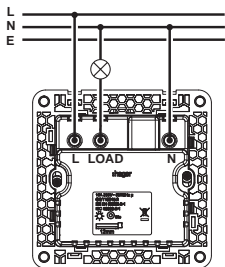
1



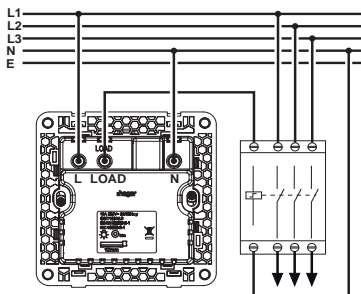
- Carefully loosen the key card module on the notches with a flat-blade screwdriver (1).
- Remove the key card module from the switch insert.

## Connecting the device

2A



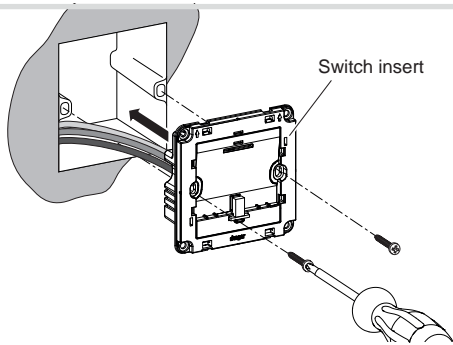
2B



- Strip connection cables approx. 12 mm.
- Connect key card switch for direct switching of loads according to connecting diagram (2A). Can be installed alternatively with a load contactor (2B).

## Installing the device into the wall box

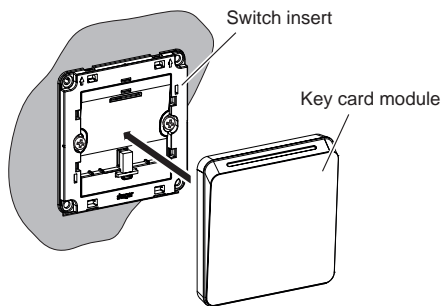
3



- After wiring, fix the switch insert with the two screws attached into the wall box (3).

## Assembling the key card module

4



- Place the key card module in the correct position and snap it onto the switch insert (4).

**i** 2-5gang frames are available for multiple combinations.