

Safety instructions

Electrical equipment must only be installed and assembled by a qualified electrician in accordance with the relevant installation standards, regulations, directives and safety and accident prevention directives of the country.

Failure to comply with these installation instructions may result in damage to the device, fire or other hazards.

Function

LED light for illumination of corridors, hallways or steps in residential areas or hotel room floor areas.

Direct connection to 230 V~ or operation via separate push-button or switch.

Correct use

- For the flush-mounted installation in standard wall boxes (recommended wall box depth ≥ 35 mm).
- Only suitable for use in indoor areas with no drip and no spray water.

Technical data

Rated voltage	230 V~
Rated frequency	50/60 Hz
Power consumption	0.25 W
Light colour	warm white
Conductor cross-section of screw terminals	2 x 1.5 mm ²
Distance of fixing holes	60.3 mm
Compliance	IEC 60598-2-2

Information for electricians

Installation and electrical connection



DANGER!

Touching live parts can result in an electric shock.

An electric shock can lead to death.

Disconnect the connecting cables before working on the device and cover all live parts in the area!

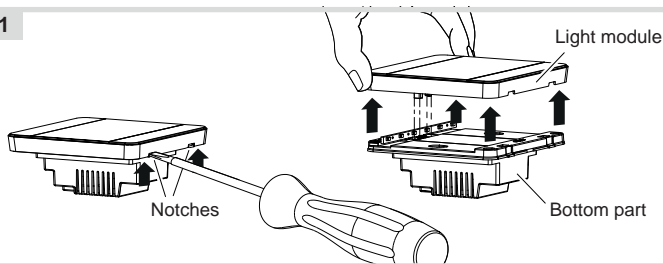


WARNING!

To avoid possible damage to the product or spurious insulation readings, please **DISCONNECT** the product before carrying out insulation resistance testing!

Preparing the device for installation

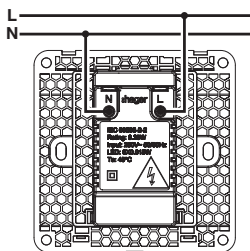
1



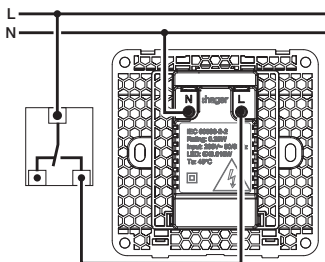
- Loosen the light module on the notches with a flat-blade screwdriver.
- Carefully lift up and remove the light module from the bottom part (1).

Connecting the device

2A Connected to main power



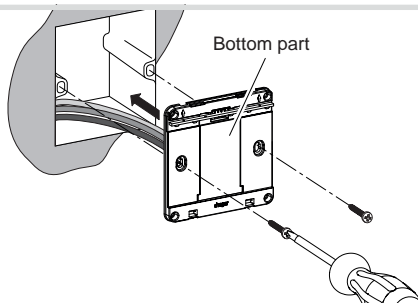
2B Controlled by switch



- Strip connection cables approx. 10 mm.
- Wire the device according to the connection diagram (2A or 2B).

Installing the device into the wall box

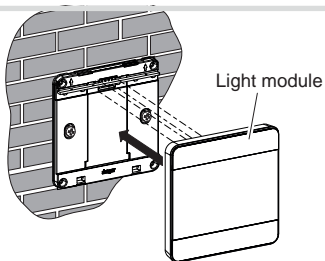
3



- After wiring, fix the bottom part with the two screws attached into the wall box (3).

Assembling the cover

4



- Place the light module in the correct position and snap it onto the bottom part (4).