

Safety instructions

Electrical equipment must only be installed and assembled by a qualified electrician in accordance with the relevant installation standards, regulations, directives and safety and accident prevention directives of the country.

Failure to comply with these installation instructions may result in damage to the device, fire or other hazards.

Function

Blind cover for electrical installations in buildings.

Correct use

- For the flush-mounted installation in standard wall boxes.
- Only suitable for use in indoor areas with no drip and no spray water.

Information for electricians

Installation



DANGER!

Touching live parts can result in an electric shock.

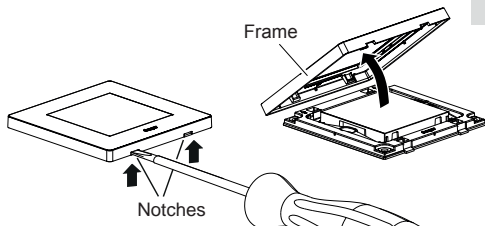
An electric shock can lead to death.

Disconnect the connecting cables before working on the device and cover all live parts in the area!

Preparing the device for installation

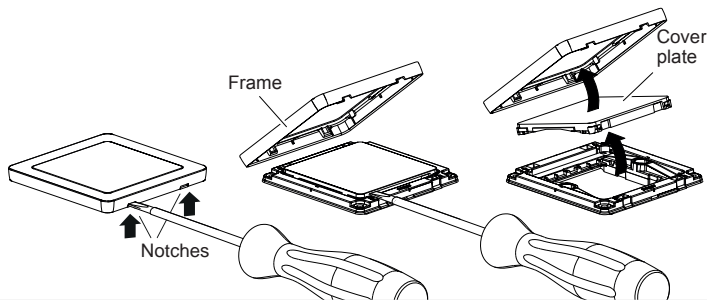
1A

Hager Muse



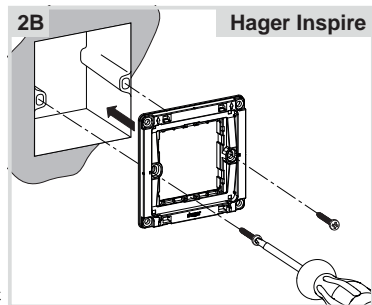
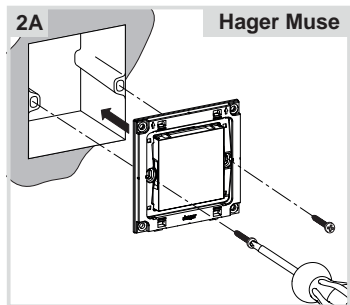
1B

Hager Inspire



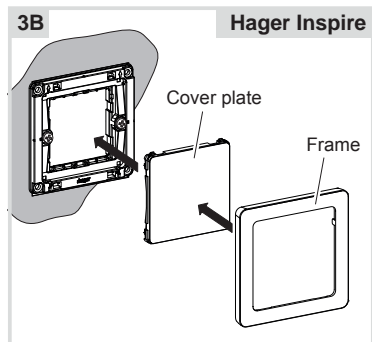
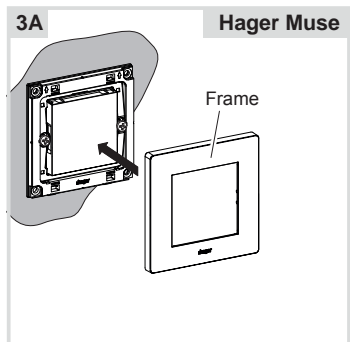
- Carefully loosen the frame on the notches with a flat-blade screwdriver. Lift up and remove the frame (1A/1B).
- **Hager Inspire:** Remove the cover plate also with a flat-blade screwdriver (1B).

Installing the device into the wall box



- Fix the device with the two screws attached into the wall box (2A/2B).

Assembling the covers



- **Hager Muse:** Snap the frame onto the device (3A).
- **Hager Inspire:** Place the cover plate in the correct position and fix with frame (3B).

i 2-5gang frames are available for multiple combinations.

