


Safety instructions

Electrical equipment must only be installed and assembled by a qualified electrician in accordance with the relevant installation standards, regulations, directives and safety and accident prevention directives of the country.

Failure to comply with these installation instructions may result in damage to the device, fire or other hazards.

Function

Switching and dimming of incandescent lamps, high-voltage halogen lamps as well as dimmable electronic transformers (marked with L, C) with halogen lamps.

 Recommendation: Use Osram transformator ET-PARROT 105/220...240 I.

Correct use


- For the flush-mounted installation in standard wall boxes (recommended wall box depth ≥ 35 mm).
- Only suitable for use in indoor areas with no drip and no spray water.

Product characteristics

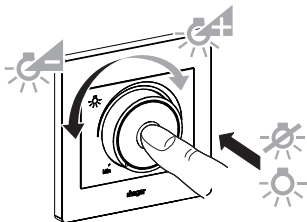
- Dimming principle: phase cut-on
- Change-over switch in combination with change-over switch possible.
- Short-circuit proof and overload proof

Technical data

Rated voltage:	230 V~
Frequency:	50/60 Hz
230 V incandescent and halogen lamps:	40 ... 500 W
Electronic transformers (marked with L,C):	40 ... 250 W
Conductor cross-section of screw terminals:	max. 3 x 1.5 mm ²
Distance of fixing holes:	60.3 mm
Operating temperature:	-5 ... +45 °C
Relative humidity (without condensation):	5 ... 95 % (at 25 °C)
Standards:	BS EN 60669-2-1, IEC 60669-2-1

 Mixed operation of 230 V incandescent and halogen lamps as well as electronic transformers (marked with L,C until smallest maximum load possible).

Operating the device



i The switch-on brightness level depends on the position of the dimmer.

Information for electricians Installation and electrical connection



DANGER!

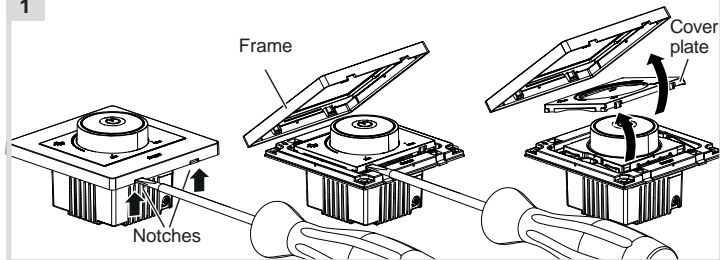
Touching live parts can result in an electric shock.

An electric shock can lead to death.

Disconnect the connecting cables before working on the device and cover all live parts in the area!

Preparing the device for installation

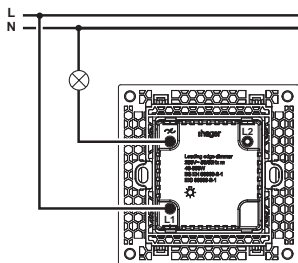
1



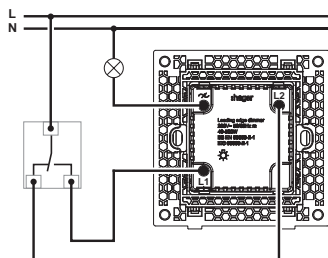
- Carefully loosen the frame on the notches with a flat-blade screwdriver (1).
- Remove the cover plate.

Connecting the device

2A



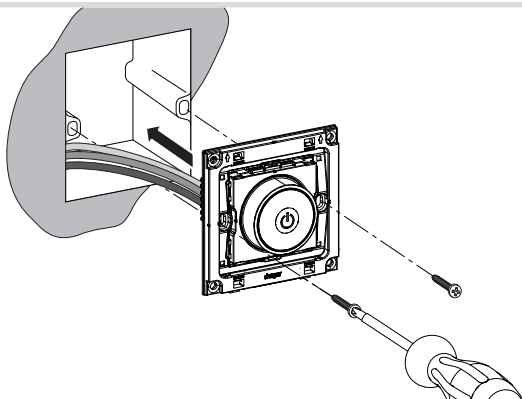
2B



- Strip connection cables approx. 11 mm.
- Wire the dimmer according to the connection diagram (2A). Can be installed alternatively with a change-over switch (2B).

Installing the device into the wall box

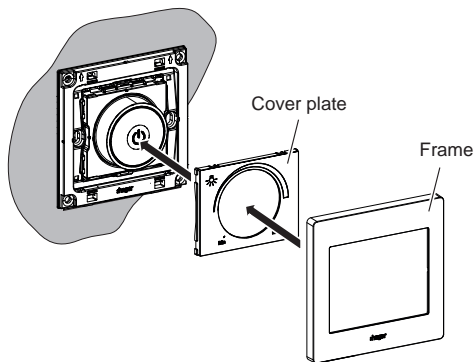
3



- After wiring, fix the device with the two screws attached into the wall box (3).

Assembling the cover plate and frame

4



- Place the cover plate in the correct position and fix with frame (4).

i 2-5gang frames are available for multiple combinations.