

Safety instructions

Electrical equipment must only be installed and assembled by a qualified electrician in accordance with the relevant installation standards, regulations, directives and safety and accident prevention directives of the country.

Failure to comply with these installation instructions may result in damage to the device, fire or other hazards.

Function

The DND&MUR switch has been developed for electrical installations in hotel buildings. A status **“Do Not Disturb”** or **“Make Up Room”** can be activated by the hotel guest with the DND&MUR switch in the hotel room. The status message can be signalled by a corresponding indicator (not included) outside room on the hotel corridor.

Correct use

- For the flush-mounted installation in standard wall boxes (depth of box ≥ 35 mm).
- Only suitable for use in indoor areas with no drip and no spray water.

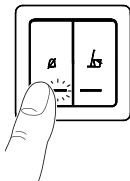
Technical data

Switch rating:	250 V~, 16 AX
Conductor cross-section of screw terminals:	min. 1 x 1.5 mm ² ... max. 2 x 4 mm ²
Distance of fixing holes:	60.3 mm
Switch compliance:	BS EN 60669-1, IEC 60669-1

Operating the device

Inside hotel room: DND&MUR switch

"Do Not Disturb"

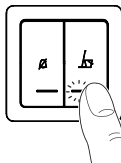


- DND contact is closed.
- DND-LED lights up in red colour.
- MUR contact is open.
- Optional bell switch terminal is cut off.

On the hotel corridor in front of hotel room

- "Do Not Disturb" status can be signalled by a corresponding indicator.
- No bell-ringing possible.

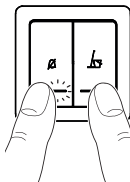
"Make Up Room"



- MUR contact is closed.
- MUR-LED lights up in green colour.
- DND contact is open.
- Optional bell switch terminal is supplied.

- "Make Up Room" status can be signalled by a corresponding indicator.

(If both
rockers
are
pressed)



- DND status has priority.
- DND contact is closed.
- DND-LED lights up in red colour.
- MUR contact is open.
- Optional bell switch terminal is cut off.

- "Do Not Disturb" status can be signalled by a corresponding indicator.
- No bell-ringing possible.

Information for electricians Installation and electrical connection



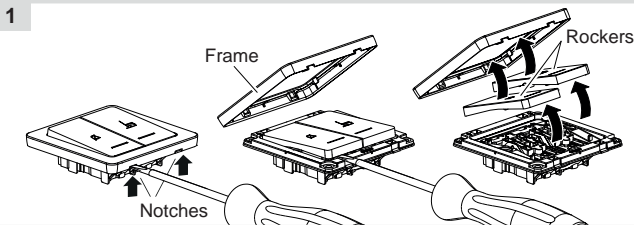
DANGER!

Touching live parts can result in an electric shock.

An electric shock can lead to death.

Disconnect the connecting cables before working on the device and cover all live parts in the area!

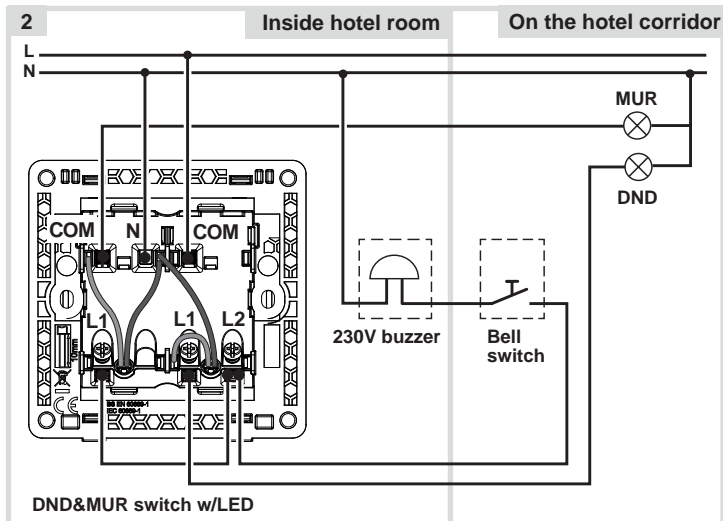
Preparing the device for installation



- Carefully loosen frame on the notches with a flat-blade screwdriver. Lift up and remove the frame (1).
- Remove both rockers also with a flat-blade screwdriver.

Connecting the device

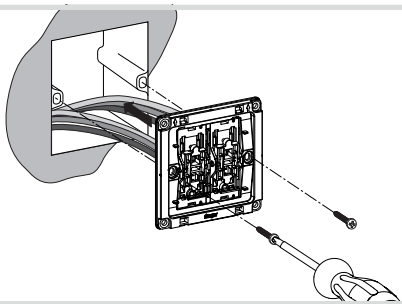
Figure 2 shows the wiring of the DND&MUR switch as well as the connection to a corresponding indicator, a bell switch and a 230V buzzer.



- Strip connection cables approx. 10 mm.
- Wire the device according to the connection diagram (2).

Installing the device into the wall box

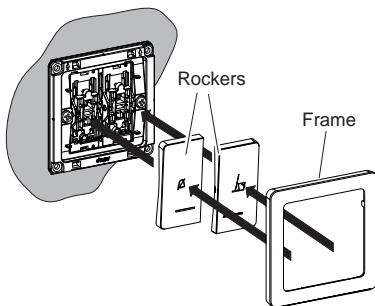
3



- After wiring, fix the device with the two screws attached into the wall box (3).

Assembling the rockers and frame

4



- Fix the two rockers and frame onto the device (4).

i 2-5gang frames are available for multiple combinations.