

Safety instructions

Electrical equipment must only be installed and assembled by a qualified electrician in accordance with the relevant installation standards, regulations, directives and safety and accident prevention directives of the country.





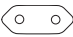
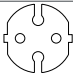
Failure to comply with these installation instructions may result in damage to the device, fire or other hazards.

Function

3pole Euro-American socket outlets for electrical installations in buildings.

Compatibility

The socket outlets are compatible with the following plug types:

Plugs	Plug types	Plug designs	Pins	Amperage	Plug standards
	Type "A"	2pole flat pin	L, N	max. 10A	GB 1002
	Type "A"	2pole flat pin UL plug	L, N	max. 15A	NEMA 1-15
	Type "B"	3pin UL plug	L, N, 	max. 15A	NEMA 5-15
	Type "C" Europlug	2pole round pin (Ø 4.0 mm)	L, N	max. 2.5A	CEE 7/16
	Type "C"	2pole round pin (Ø 4.8 mm)	L, N	max. 16A	CEE 7/17

Correct use

- For the flush-mounted installation in standard wall boxes (recommended wall box depth ≥ 35 mm).
- Only suitable for use in indoor areas with no drip and no spray water.

Technical data

Rated voltage:	250 V~
Frequency:	50/60 Hz
Socket rated current:	16 A
Conductor cross-section of screw terminals:	min. 1 x 1.5 mm ² ... max. 2 x 4 mm ²
Distance of fixing holes:	60.3 mm
Socket compliance:	IEC 60884-1

Information for electricians

Installation and electrical connection



DANGER!

Touching live parts can result in an electric shock.

An electric shock can lead to death.

Disconnect the connecting cables before working on the device and cover all live parts in the area!

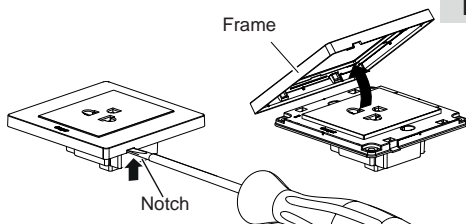
Preparing the device for installation

(for example "16A single Euro-American socket")

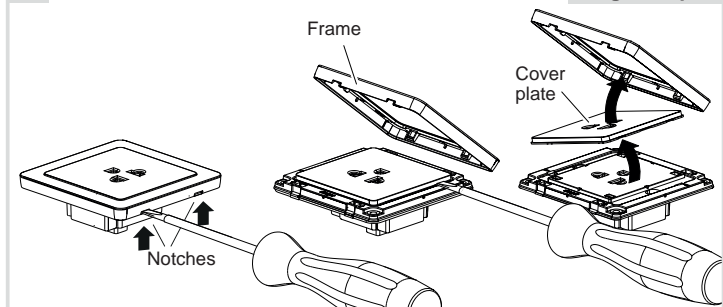
The device is delivered with a transparent dust protection sticker. This sticker must remain on the device during the time of installation.

1A

Hager Muse

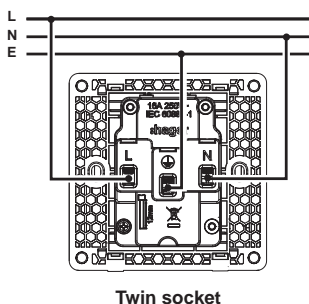
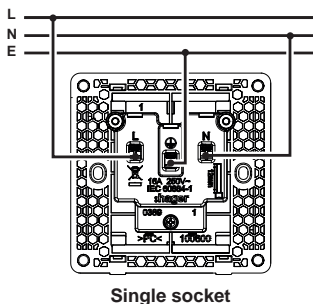


- **Hager Muse:** Carefully loosen the frame on the notch with a flat-blade screwdriver. Lift up and remove the frame (**1A**).



- **Hager Inspire:** Carefully loosen the frame on the notches with a flat-blade screwdriver. Lift up and remove the frame (1B).
- **Hager Inspire:** Remove the cover plate also with a flat-blade screwdriver (1B).

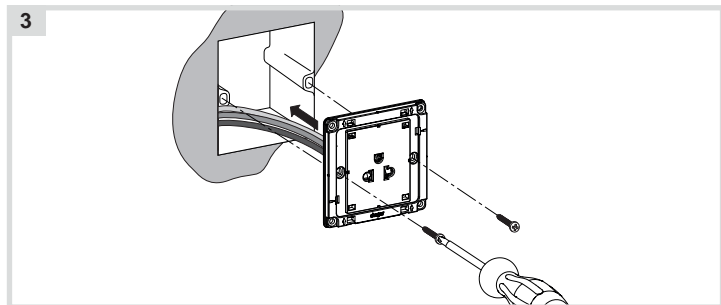
Connecting the device



- Strip connection cables approx. 10 ... 12 mm.
- Wire the device according to the appropriate connection diagram (2A or 2B).

Installing the device into the wall box

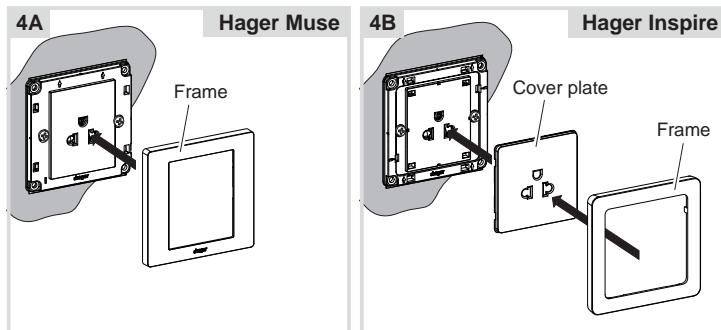
(for example "16A single Euro-American socket")



- After wiring, fix the device with the two screws attached into the wall box (3).

Assembling the covers

(for example "16A single Euro-American socket")



- **Hager Muse:** Snap the frame onto the device (4A).
- **Hager Inspire:** Place the cover plate in the correct position and fix with frame (4B).
- Remove the dust protection sticker.

i 2-5gang frames are available for multiple combinations.