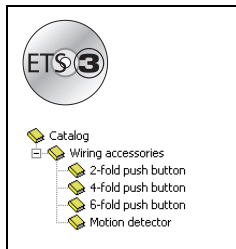

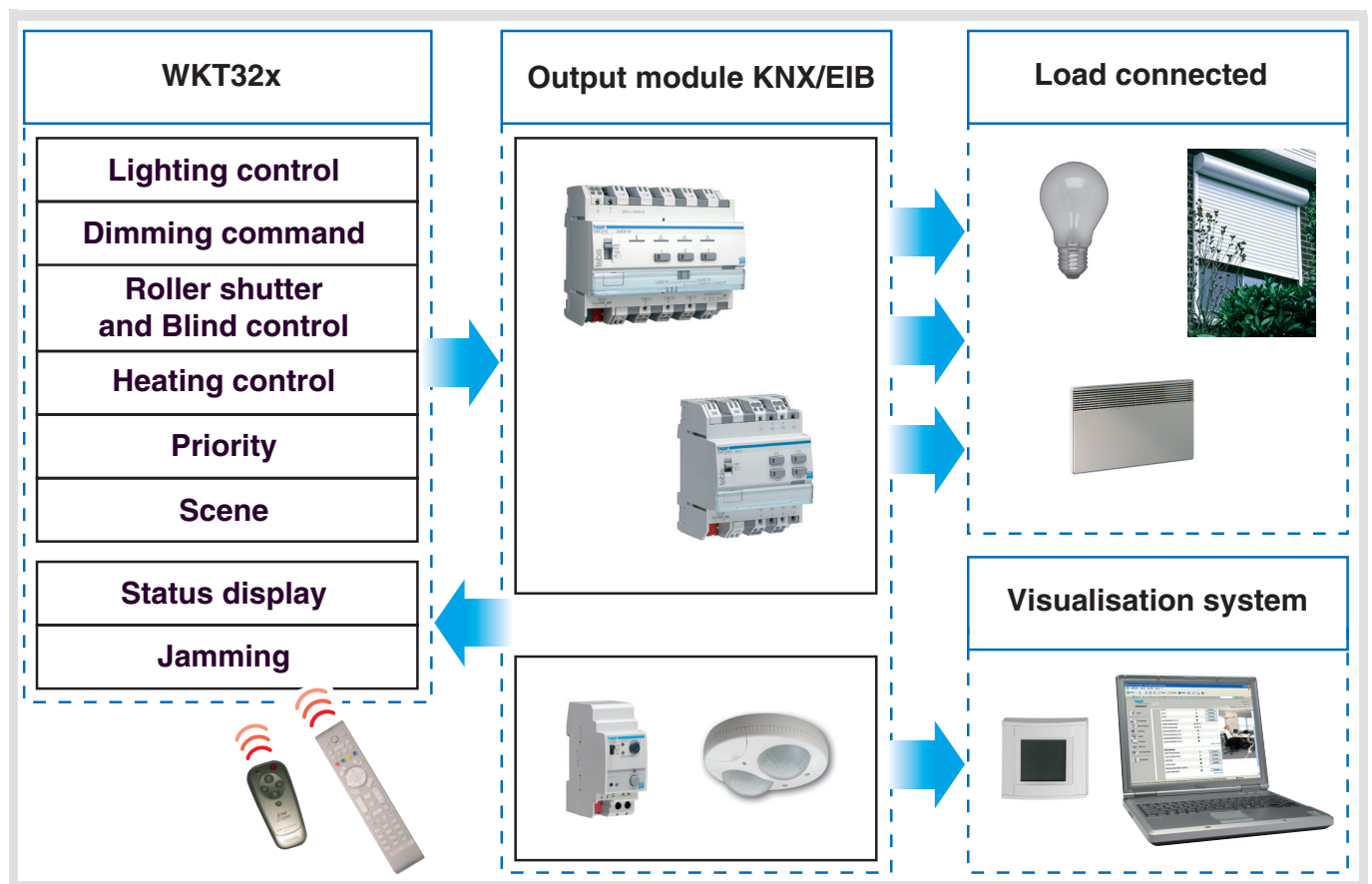


## Tebis application software



WFL322A Kallysta KNX Tebis equipment  
2E pushbuttons with infrared receiver

	Product reference	Product designation
	WKT322	2E pushbuttons with infrared receiver



### Summary

1. Presentation of the WFL322A application pushbutton functions .....	2
2. Configuration and parameterising of the Push button functions .....	3
2.1 Objects List.....	3
2.2 General parameters.....	4
2.3 Infrared activation .....	5
2.4 General setting of Pushbuttons parameters .....	6
2.5 General configuration of the infrared channels.....	10
3. Main characteristics .....	10
4. Physical addressing .....	10

## 1. Presentation of the WFL322A application pushbutton functions

The WFL322A application software allows the pushbuttons to be individually configured on products WKT322. The main functions are the following:

### ■ Sending commands

The pushbuttons allow sending commands for lighting, blinds and shutters, heating, scenes.

- Lighting control
  - Toggle, ON, OFF, ON/OFF, Timer.
  - Dimming on 1 or 2 push buttons.
- Roller shutter / Blind control
  - Up, Down, Stop, Blind slat angle, Security down.
- Heating control
  - Comfort, Economy, Frost protection, Absence, Auto.

### ■ Priority

The priority function sends priority-start or priority-stop commands.

The Priority action depends on the type of application controlled: lighting, Roller shutters, Heating, etc.

### ■ Scene

The Scene function sends group controls to different kinds of outputs to create ambiances or scenarios (leaving home scenario, reading ambience, etc.).

### ■ Infrared remote control

The WKT322 has a 24 channel infrared receiver. It can be linked to an infrared remote control (TK106, TK124). The infrared remote control offers the same functions as the pushbuttons.

### ■ Jamming

The Jamming function authorizes product locking. Jamming forbids sending commands.

### ■ 2-channel mode

The 2-channel mode function allows controlling, with the same pushbutton, two independent circuits having different functions.

## 2. Configuration and parameterising of the Push button functions

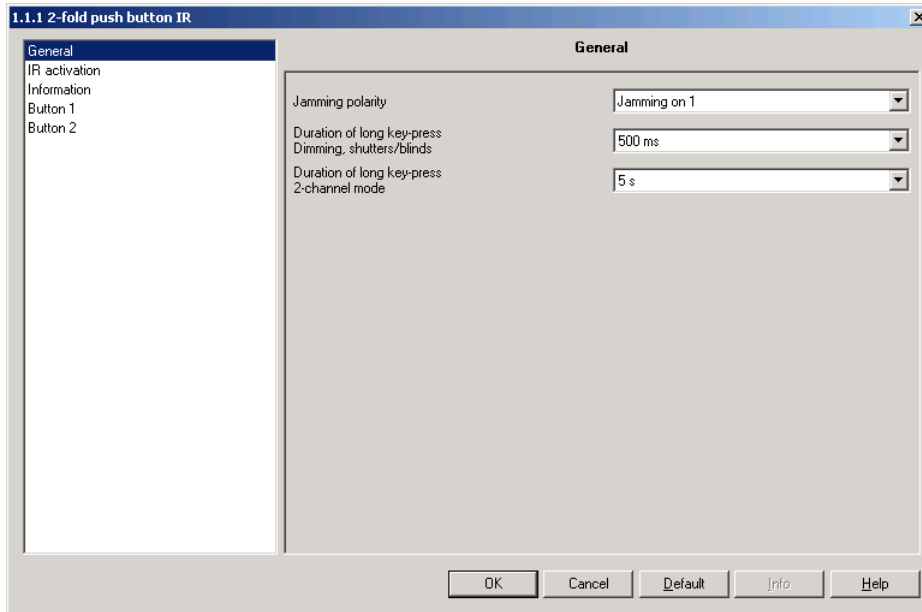
### 2.1 Objects List

Function \ Object name	ON/OFF	Toggle	Time-limited toggle switch	Timer	1-button dimmer	2-button dimmer	1-button shutters/blinds	2-button shutters/blinds	Heating	Priority	Scene	Value	2-channel mode, ON/OFF (ON or OFF)	2-channel mode, ON/OFF (Toggle)	General functions
ON/OFF	X	X			X	X									
Status display		X	X		X		X								
Time-limited toggle switch			X												
Timer				X											
Dim					X	X									
Stop/Angle							X	X							
Shutters/Blinds							X	X							
Setpoint selection									X						
Priority										X					
Scene											X				
Value												X			
ON/OFF Channel A													X	X	
ON/OFF Channel B													X	X	
Status indication, channel A														X	
Status indication, channel B														X	
Jamming	X	X	X	X	X	X	X	X	X	X	X	X	X	X	X

## 2.2 General parameters

### Jamming and hold-down durations

→ Parameters



Screen 1

### Jamming

Key locking is activated by the Jamming object.

→ Parameter Setting screen: See "Screen 1".

→ Parameter

Designation	Description	Values
Jamming polarity	The Jamming function authorizes product locking. Jamming forbids sending commands. This parameter defines the level at which jamming is active.	Jamming on 1, Jamming on 0. Default value: Jamming on 1.

■ Hold down durations

→ Parameter Setting screen: See "Screen 1".

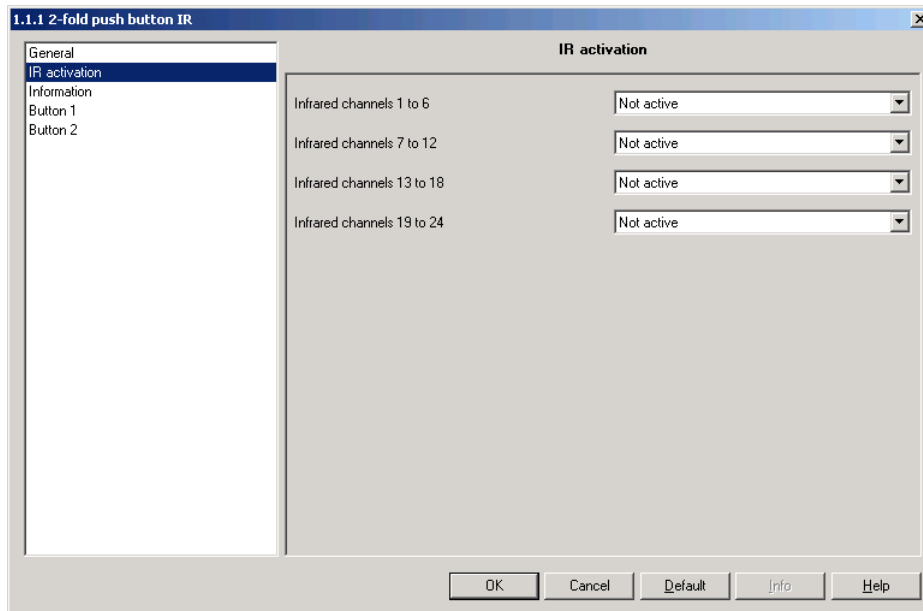
→ Parameters

Designation	Description	Values
Duration of long key-press Dim, Blinds / shutters	This parameter defines for the dimmer and shutters/blinds function the detection time of a hold down pressure.	400 ms, 500 ms, 600 ms, 700 ms, 800 ms, 900 ms, 1 s. Default value: 500 ms.
Duration of long key-press 2-channel mode	This parameter defines the detection time of a long press to activate 2 channel mode.	500 ms, 1 s, 2 s, 3 s, 4 s, 5 s, 6 s, 7 s, 8 s, 9 s, 10 s. Default value: 5 s.

## 2.3 Infrared activation

These parameters are used to activate the products infrared channels.

The product has 24 infrared channels. Each infrared channel has the same functionalities as a pushbutton. These channels are controlled via an infrared remote control (TK106, TK124) or via a remote control with learning facilities (e.g. "Philips" pronto type).



Screen 2

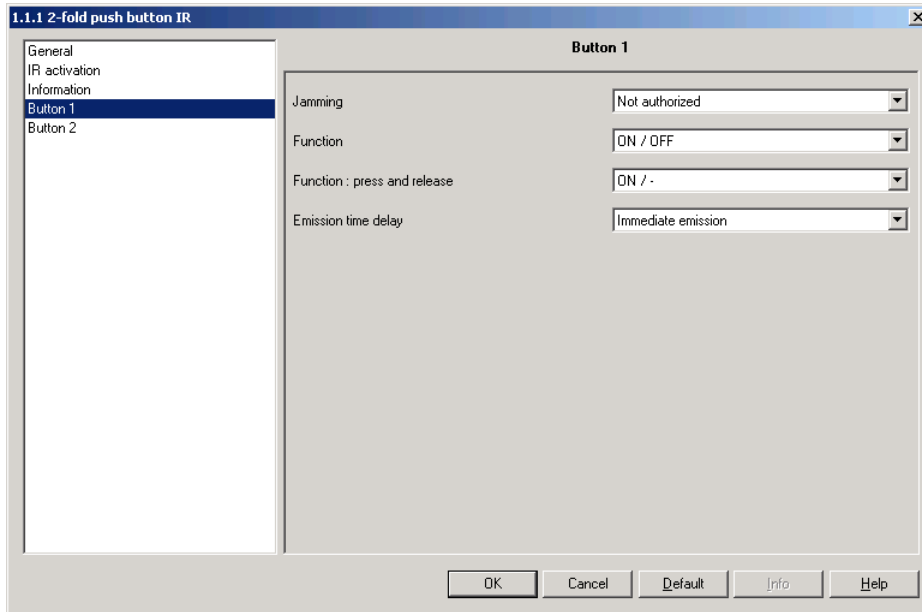
→ Parameter

Designation	Description	Values
Infrared channels 1 - 6, 7 - 12, 13 - 18, 19 - 24.	These parameters are used to activate the groups of channels.	Not used, Authorized. Default value: Not used.

## 2.4 General setting of Pushbuttons parameters

### ■ Jamming and Function

#### → Parameters



Screen 3

### ■ Jamming

The Jamming function allows enabling the locking of a pushbutton. Jamming forbids sending commands. This function is started by the Jamming object.

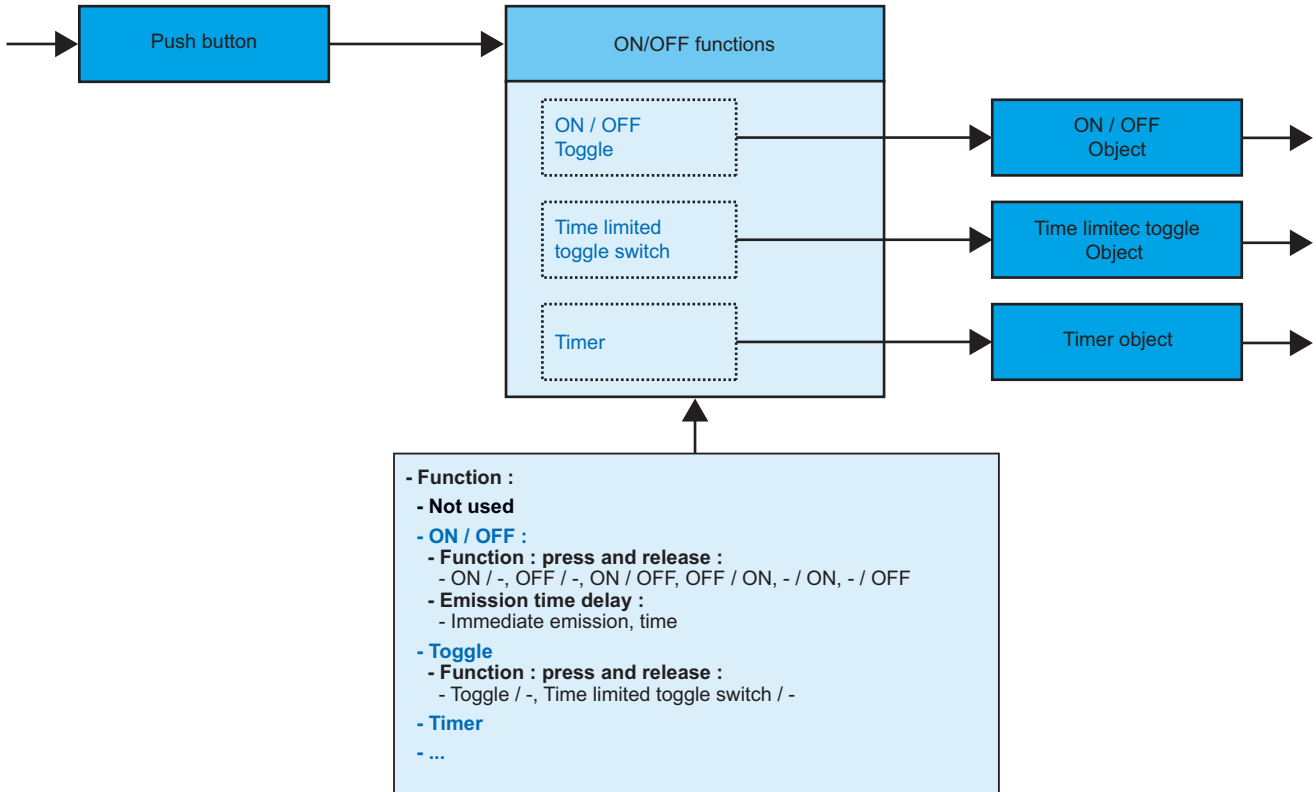
Designation	Description	Values
Jamming	This parameter allows blocking the use of the pushbutton.	Not authorized, Authorized. Default value: Not authorized.

■ Function

The Function parameter is used to select the type of function linked to a pushbutton or key.

**A. ON/OFF functions: ON/OFF, Toggle, Timer**

These functions allow switching ON or OFF a lighting circuit or any other load. The ON/OFF and pushbutton functions are performed by sending the ON/OFF object. The time delayed remote switch function is performed by sending the time delayed switch object. The Timer function is performed by sending the Timer object. The status of the controlled output is received on the Status indication object. The available functions depend on the value of the parameters.



→ Parameter Setting screen: See "Screen 3"

• ON/OFF

Designation	Description	Values
Function : press and release	This parameter defines the commands sent when the push button is pressed and released.	ON/-, OFF/-, ON/OFF, OFF/ON, -/ON, -/OFF. Default value: ON/-. Command when pressing / Command when releasing (" - " = No action).
Emission time delay	This parameter sends commands with a set delay in relation to pressing or releasing.	Immediate emission, 1 s, 2 s, 3 s, 5 s, 10 s, 15 s, 20 s, 25 s, 30 s, 40 s, 50 s, 1 min, 1 min 30 s, 2 min, 2 min 30 s, 3 min, 3 min 30 s, 4 min, 4 min 30 s, 5 min. Default value: Immediate emission.

• Toggle

Designation	Description	Values
Function : press and release	This parameter defines the commands sent when the push button is pressed and released.	Toggle / -, Time delayed remote switch / -, -/Toggle. Default value: Toggle / -. Command when pressing / Command when releasing (" - " = No action).

**B. Dimming function**

This function allows dimming a light using one or two pushbuttons.  
 The ON/OFF function is performed by sending the ON/OFF object (press briefly).  
 The Dimming function emits the Dimming object (press for a long time).

→ Parameter Setting screen: See "Screen 3"

Designation	Description	Values
Choice of function	This parameter selects the utilization mode: 1-button dimmer or 2-button dimmer.	1-button dimmer, 2-button dimmer. Default value: 1-button dimmer.
Dimming direction*	This parameter defines the dimming direction associated to the button.	Increase, Decrease. Default value: Increase.

\* This parameter is only visible if the parameter "Function" has the value: 2-button dimmer.

**C. Roller shutters / Blinds function**

This function controls shutters or a blind using one or two push buttons.  
 The Up/Down function transmits the Up/Down object (press for a long time).  
 The Stop/Angle function transmits the Stop/Angle object (press briefly).

→ Parameter Setting screen: See "Screen 3"

Designation	Description	Values
Choice of function	This parameter selects the utilization mode: 1 button, 2 buttons, 2 buttons Safety.	1-button shutters/blinds, 2-button shutters/blinds, 2-buttons Safety Shutters / Blinds. Default value: 1-button shutters/blinds.
Control type*	This parameter defines the movement direction associated to the button.	Up, Down. Default value: Up.

\* This parameter is only visible if the parameter "Function" has the value: 2-button shutters/blinds or 2-buttons Safety Shutters / Blinds.

**D. Heating functions**

This function allows selecting a heating or air-conditioning set-point using one or two pushbuttons.  
 The Heating function transmits the Set-point selection object.

→ Parameter Setting screen: See "Screen 3"

Designation	Description	Values
Choice of function	This parameter selects the setpoint associated to the button.	Comfort, Economy, Frost protection, Auto, Absence. Default value: Comfort.

**E. Priority function**

The priority function sends priority-start or priority-stop commands.  
 The Priority action depends on the type of application controlled: lighting, Roller shutters, Heating, etc.  
 The Priority function transmits the Priority object.

→ Parameter Setting screen: See "Screen 3"

Designation	Description	Values
Priority type	This parameter selects a Priority type. It depends on the type of application.	Priority ON - Down - Comfort, Priority OFF - Up - Frost protection. Default value: Priority ON - Down - Comfort.



**F. Scene function**

The Scene function sends group controls to different kinds of outputs to create ambiances or scenarios (leaving home scenario, reading ambience, etc.).

The Scene function transmits a Scene object.

→ Parameter Setting screen: See "Screen 3"

Designation	Description	Values
Scene number	This parameter defines the scene number.	Scene 1 to Scene 32. Default value: Scene 1.
Emission time delay	This parameter allows sending the commands with a parameterisable delay in relation to the key-press.	Immediate emission, 1 s, 2 s, 3 s, 5 s, 10 s, 15 s, 20 s, 25 s, 30 s, 40 s, 50 s, 1 min, 1 min 30 s, 2 min, 2 min 30 s, 3 min, 3 min 30 s, 4 min, 4 min 30 s, 5 min. Default value: Immediate emission.
Scenes modification via long key-press	This parameter authorizes or forbids scene storing.	Authorized, Forbidden. Default value: Authorized.

**G. Value function**

The Value function allows the command of a luminosity level, a temperature, an illumination value, etc.

The Value function transmits a Value object.

→ Parameter Setting screen: See "Screen 3"

Designation	Description	Values
Value type	This parameter defines the type of value sent.	Value in %, Temperature, Brightness level, Illumination value, 2-octet value. Default value: Illumination value.
Value	This parameter defines the value to be sent to the bus.	Possible values:  Value in % 0% to 100% in 1% steps. Default value: 0%.  Temperature 0°C to 40°C in 0.5°C steps. Default value: 20°C.  Brightness level 0 lux to 1000 lux in 50 lux steps. Default value: 300 lux.  Illumination value 0% to 100% in 1% steps. Default value: 0%.  2-octet value 0 to 65535 in 1 steps. Default value: 0.

## H. 2-channels ON/OFF mode function

The 2-channel mode function allows controlling, with the same pushbutton, two independent circuits having different functions. The 2-channel mode function transmits the ON/OFF channel A and ON/OFF channel B objects.

→ Parameter Setting screen: See "Screen 3"

Designation	Description	Values
Channel A function (press briefly)	This parameter defines the command sent by a short key-press.	ON, OFF, Toggle. Default value: Toggle.
Channel B function (press for a long time)	This parameter defines the command sent by a long key-press.	ON, OFF, Toggle. Default value: ON.

## 2.5 General configuration of the infrared channels

### ■ Jamming

The Jamming function authorizes locking an infrared channel. Jamming forbids sending commands. This function is started by the Jamming object.

Designation	Description	Values
Jamming	This parameter is used to jam use of an infrared channel.	Not authorized, Authorized. Default value: Not authorized.

### ■ Function

The following functions are available for each infrared channel:  
ON/OFF, Toggle, Timer, Dim, Shutter/Blind, Heating, Priority, Scene, Value.  
These functions are described in paragraphs A to H above.

## 3. Main characteristics

Max. number of group addresses	252
Max. number of links	254
Objects	239

## 4. Physical addressing

To perform physical addressing or to check for the presence of the bus, press the pushbutton located on the mechanism. Indicator on = bus presence and product in physical addressing.

The product remains in physical addressing until the physical address has been transmitted by ETS. Press again to exit physical addressing mode.

NOTA

