

Safety instructions

Electrical equipment must only be installed and assembled by a qualified electrician in accordance with the relevant installation standards, regulations, directives and safety and accident prevention directives of the country.

Failure to comply with these installation instructions may result in damage to the device, fire or other hazards.

Function/Correct use

Hinged cover to protect a BS twin socket from water and dust (IP55).

- Compatible with all flush-mounted BS twin sockets of our design ranges Hager Muse, Hager Inspire and Hager Dream when installed in a standard twin wall box. Not compatible with USB sockets of the ranges.
- Can be locked with a suitable padlock (not included).

Technical data

Degree of protection:	IP55
Distance of fixing holes:	120.6 mm
Number of cable outlets:	2
Cable diameter \varnothing per cable outlet:	max. 12 mm
Diameter \varnothing of locking eyelet:	4.38 mm
Compliance:	IEC 60529

Information for electricians

Installation and electrical connection



DANGER!

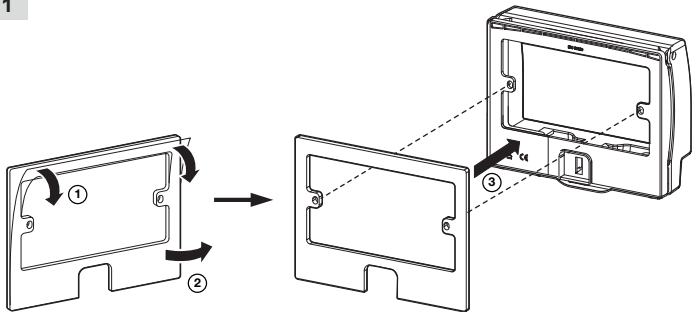
Touching live parts can result in an electric shock.

An electric shock can lead to death.

Disconnect the connecting cables before working on the device and cover all live parts in the area!

Mounting the IP55 sealing

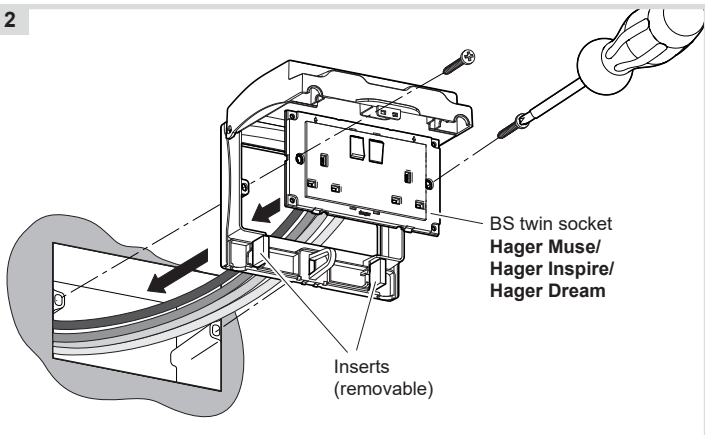
1



- Remove foil from sealing (1).
- Align sealing and cover to each other and glue both parts. Ensure that the sealing is firmly fixed on the cover and that it does not curl or forms air pockets.

Installing the device into the wall box

2



- Open the hinged cover, and place a Hager BS twin socket (without frame!) into the IP55 twin cover (2).
- Wire the twin socket according to its related installation manual.
- After wiring, fix the device with the two screws into the wall box.
- Close hinged cover.

Operating the device



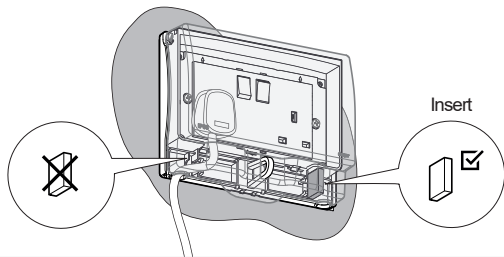
ATTENTION!

Degree of protection IP55 can only be achieved if each cable outlet is either occupied by a BS plug or the insert is attached (see Figure 3).

Furthermore, the hinged cover must be properly closed.

Always replace the insert if a cable outlet is currently not used.

3



- Open the hinged cover.
- Before connecting a load, remove the relevant insert (3) from the IP55 cover.
- When connecting a load, always route the cables properly. Do not kink or squeeze the cables!
- Close hinged cover properly again.

Optional: Lock the twin cover with padlock

If required, the hinged cover can be locked with a suitable padlock (4).

4

