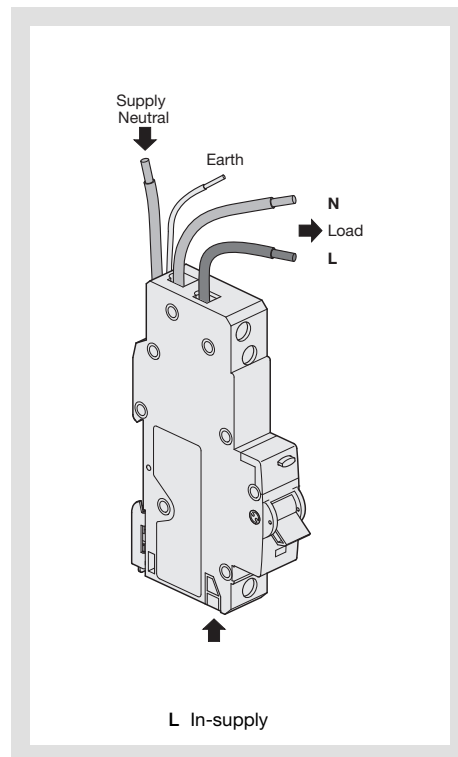
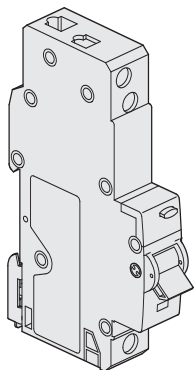


**(AU) Residual Current Breakers
Operated RCBO**

User instructions

6A 5006.d

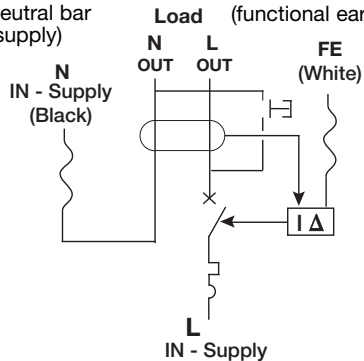


**WARNING: installation by
qualified contractors only**

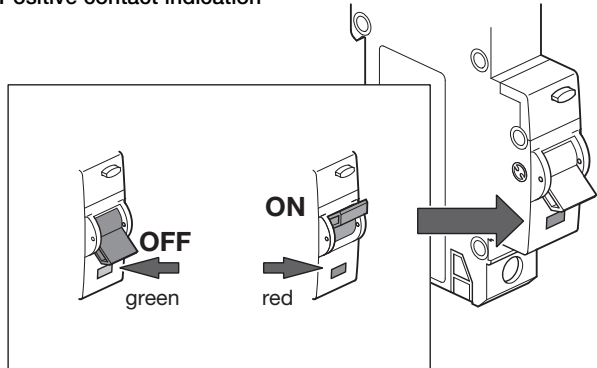
Electrical connection

Connect to
neutral bar
(supply)

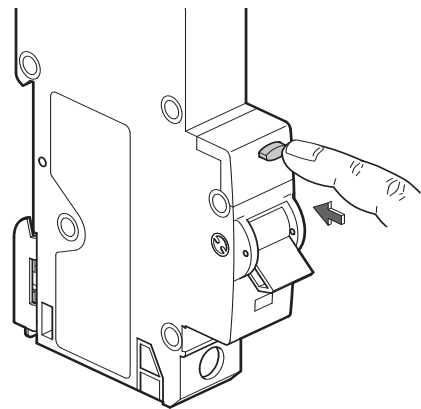
Connect to earth bar
(functional earth)



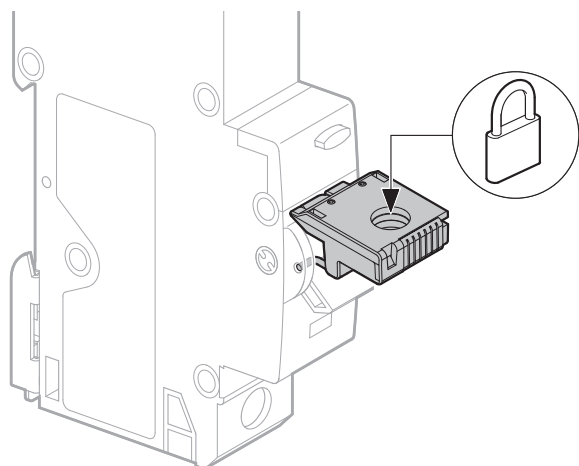
Positive contact indication



Test:
test every 3 months,
RCBO must trip



Locking device for handle



**WARNING: disconnect neutral (black) and
functional earth (white) wires before any
insulations test.
Glue the white sticker with the red indication
on the inside of the enclosure.**

