

L250A

# Gebrauchsanleitung Installation Instructions



14515d

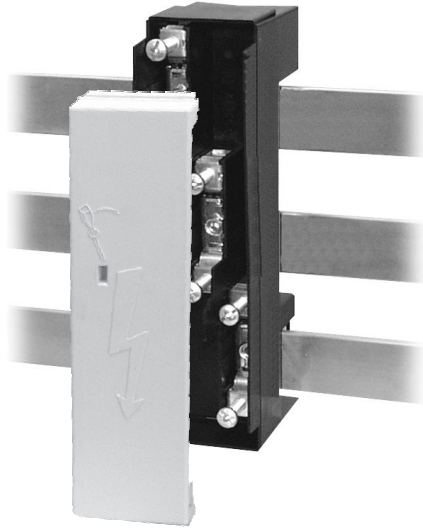


**Anschlußmodul  
für 60mm  
Sammelschienensysteme  
3polig, 4polig**

**Connection module  
for 60mm busbar systeme  
3-pole, 4-pole**



**Vor Beginn der Arbeiten Gerät spannungsfrei schalten. Inbetriebsetzung und Wartung nur durch Fachpersonal. To prevent electrical shock disconnect from power source before installing or servicing. Work and maintenance by skilled staff only.**



**Anschlußart "F70"  
Terminal type "F70"**

**Anzugsdrehmoment  
Tightening torque**

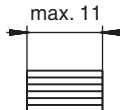
**Klemmbereich Kabel  
Clamping range**

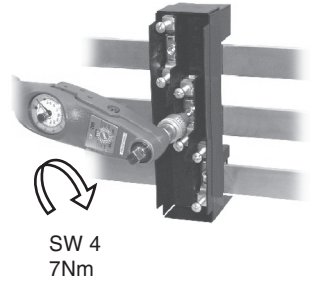
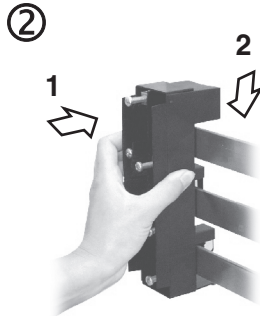
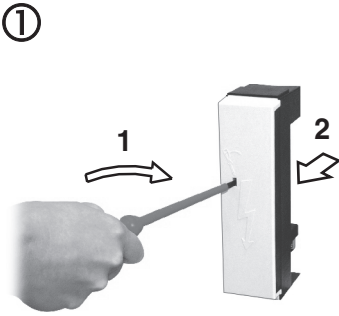


Fahrstuhlklemme / Elevator terminal

2,6 Nm

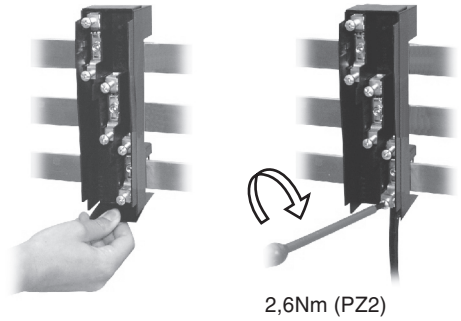
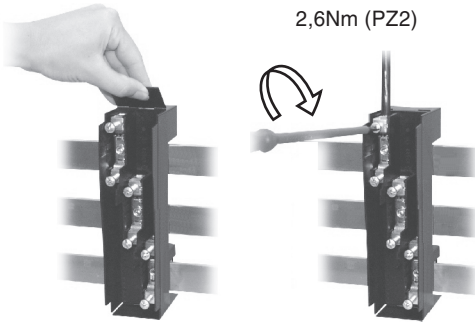
1,5 - 70 mm<sup>2</sup> Al/Cu





**Abgang oben / Connection, top**

**Abgang unten / Connection, bottom**



**Durchschleifen / Past through**

