

Safety instructions

Electrical equipment must only be installed and assembled by a qualified electrician in accordance with the relevant installation standards, regulations, directives and safety and accident prevention directives of the country.

Failure to comply with these installation instructions may result in damage to the device, fire or other hazards.

Function

In a case of emergency the red button gets pressed and a signal gets forwarded to a central indication board at a hotel reception, in a guard house, help-center, etc.. Release of push-button only possible by using a mechanical key.

Correct use

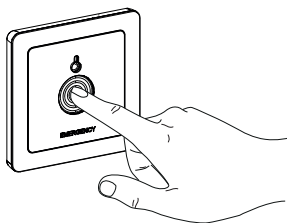
- For the flush-mounted installation in standard wall boxes (recommended wall box depth ≥ 35 mm).
- Only suitable for use in indoor areas with no drip and no spray water.

Technical data

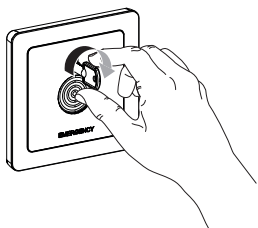
Rated voltage:	max. 36 V DC
Rated current:	1 A
Conductor cross-section of screw terminals:	max. 2 x 1.5 mm ²
Distance of fixing holes:	60.3 mm

Operating the device

Activate



Release



- Press the push button to enable the alarm.
- Turn the key clockwise in order to disable the alarm and release the push button.

Information for electricians

Installation and electrical connection



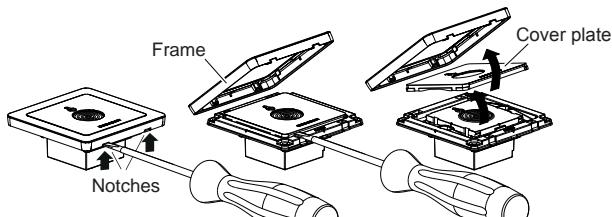
DANGER!

Touching live parts can result in an electric shock.
An electric shock can lead to death.

Disconnect the connecting cables before working on the device and cover all live parts in the area!

Preparing the device for installation

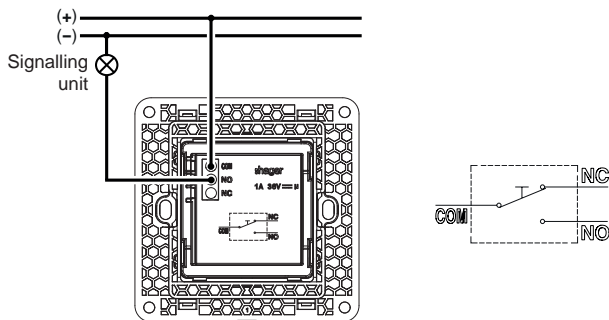
1



- Carefully loosen the frame on the notches with a flat-blade screwdriver (1).
- Remove the cover plate.

Connecting the device

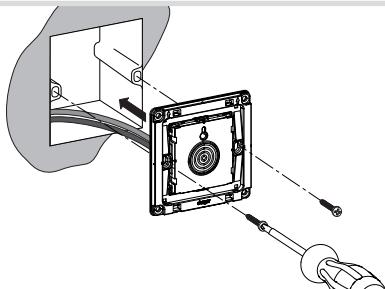
2



- Strip connection cables approx. 10 ... 15 mm.
- Wire the emergency switch according to the connection diagram (2).

Installing the device into the wall box

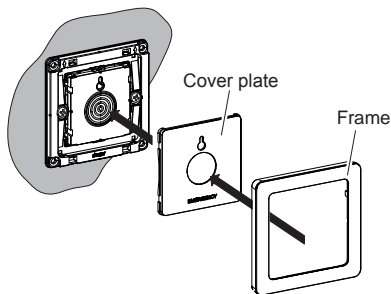
3



- After wiring, fix the device with the two screws attached into the wall box (3).

Assembling the cover plate and frame

4



- Place the cover plate in the correct position and fix with frame (4).

i 2-5gang frames are available for multiple combinations.