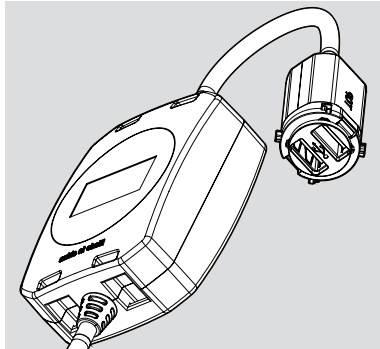


210mm

:hager



WIS0090

WBMUSB-xx WBMUSBAC-xx

USB connectable devices

Mobile phones, tablets, e-readers and audio players.

Installation instructions

- 1 - Fit USB module into Rotoloc compatible plate.
- 2 - Connect Brown (Active) and Blue (Neutral) cables to corresponding A&N 240V supply.
- 3 - Fix transformer via cable tie if required.
- 4 - Fit plate to wall.



Rotoloc USB charger

User Instructions

Warnings for safe use

- This product must be installed by a licensed electrician.
- For indoor use only.
- This product contains no serviceable parts and no attempt should be made to repair the product.
- Ensure transformer is clear of any wall insulation.

Technical specifications

USB Input	230-240V ~ 50Hz 300mA
USB Output	5.0V  4.2A max, 21.0W Type A: 2.4A max; Type C: 3.0A max
Efficiency level	
Average Active Efficiency	83.5%
Efficiency at low load (10%)	79.0%
No-load power consumption	100mW
Overload protection on output	4.6 ± 0.3A
Test standards	IEC62368-1 CISPR32

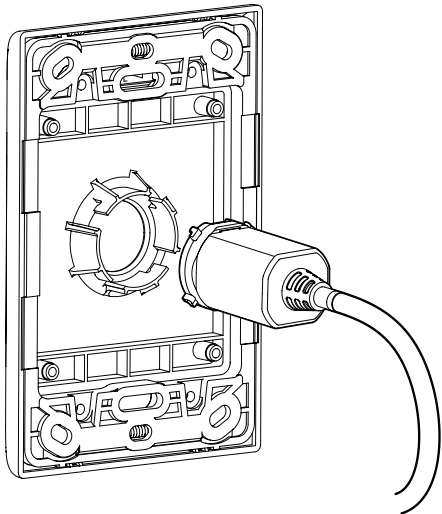
148.5mm

Customer service

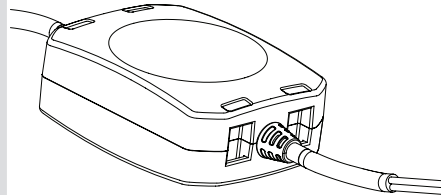
P 1300 850 253
 F 1300 424 372
 E customerservice@hagerelectro.com.au
 W www.hagerelectro.com.au

210mm

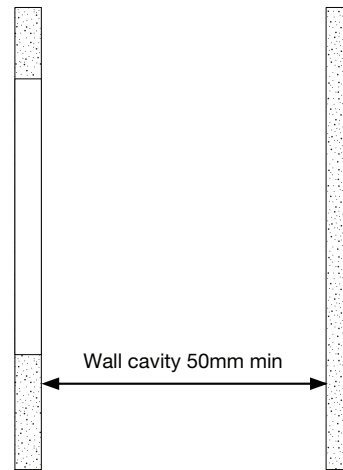
Fits into any Rotoloc compatible plate or socket.



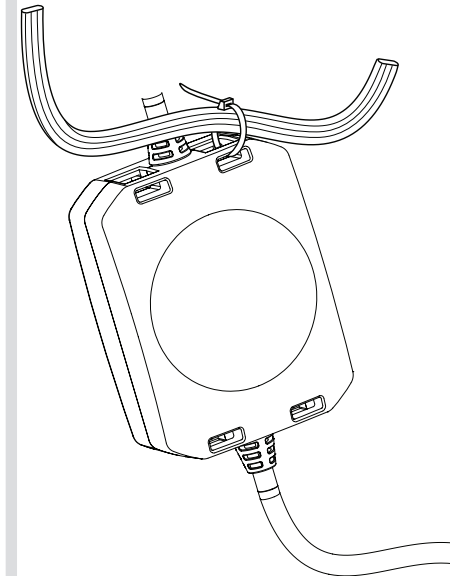
A = brown, N = blue



Connect to mains supply



Cable tie transformer to mains cable to avoid strain on USB mechanism



148.5mm