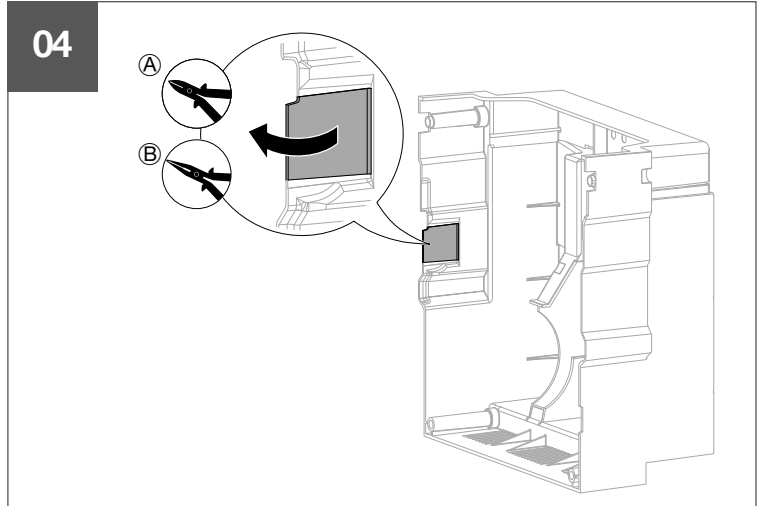
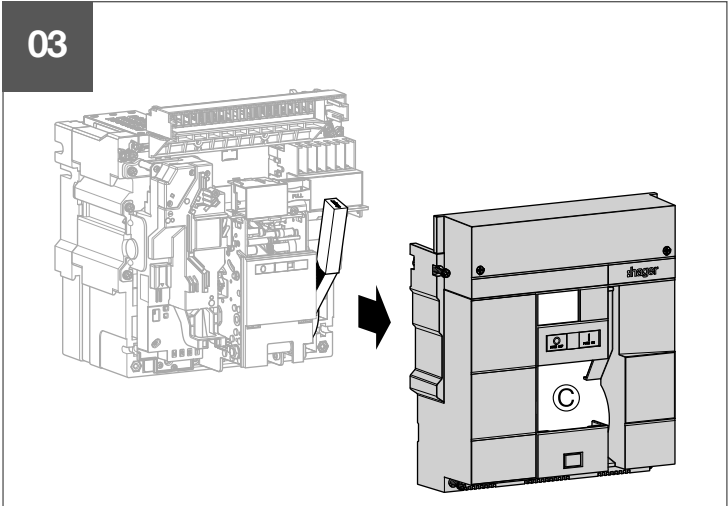
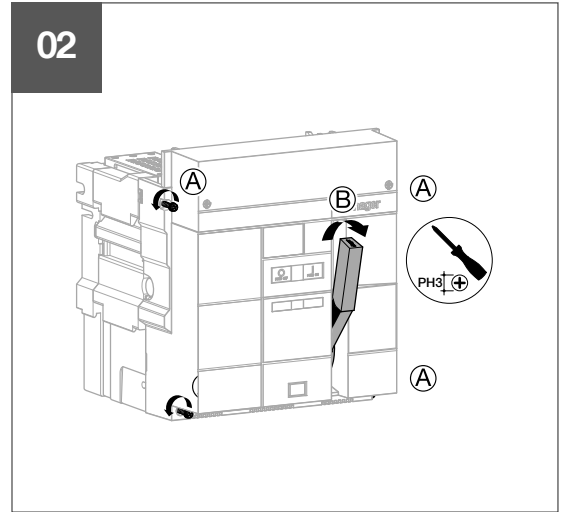
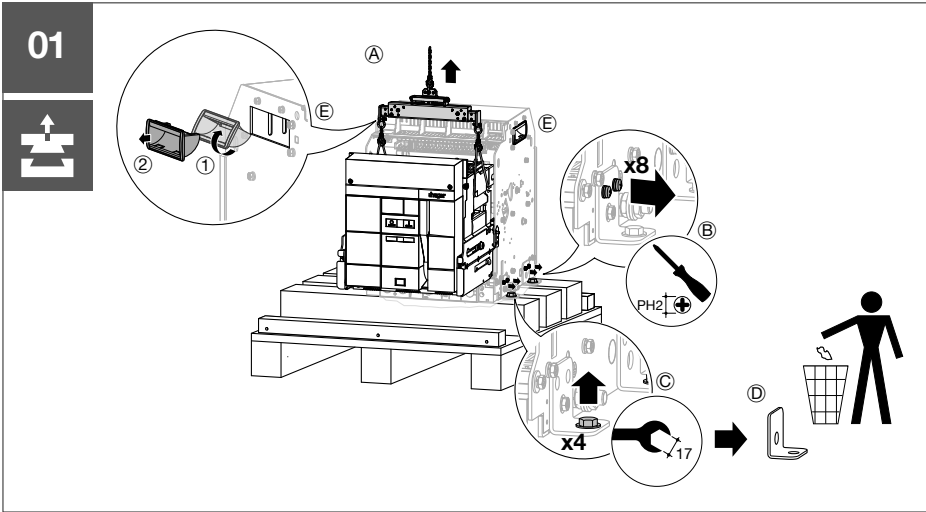
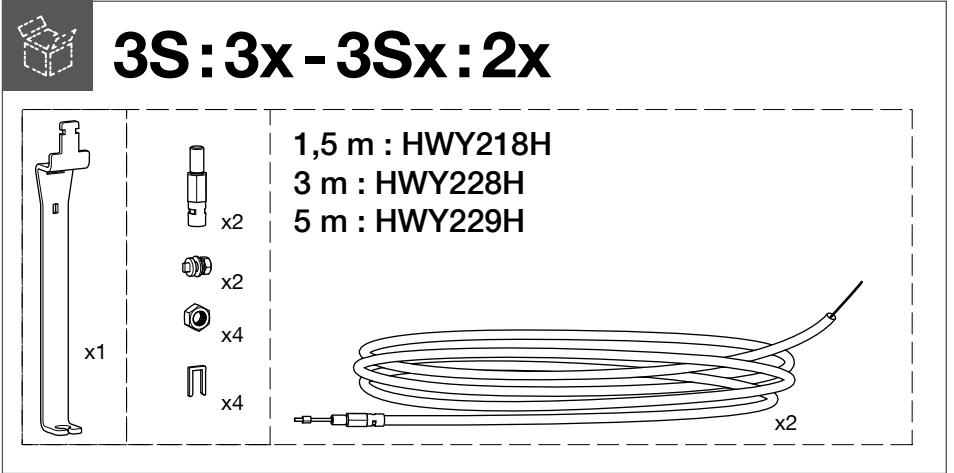
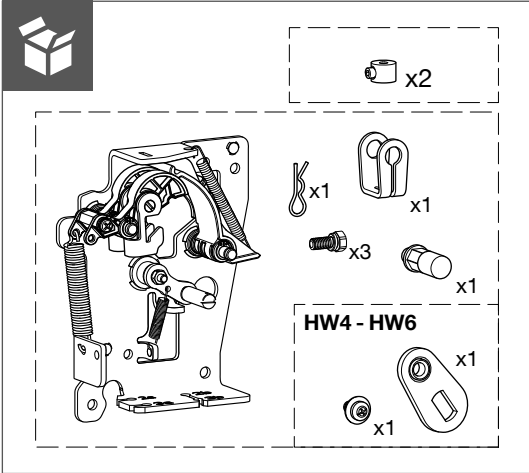
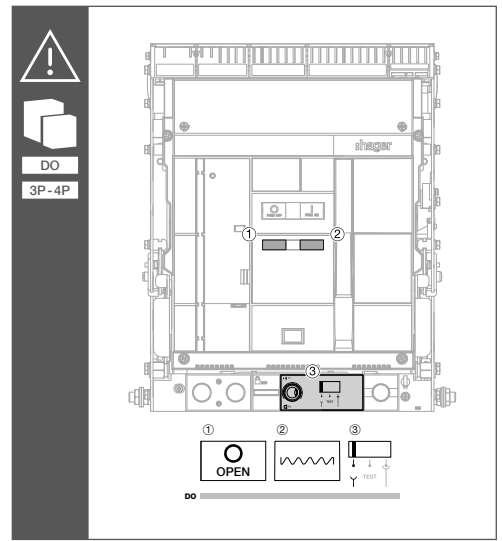
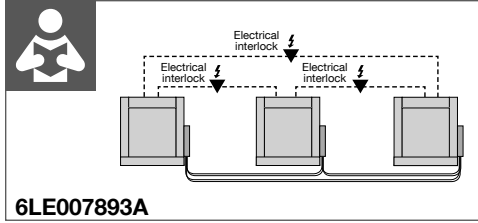
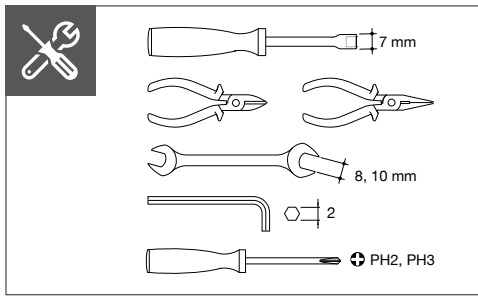
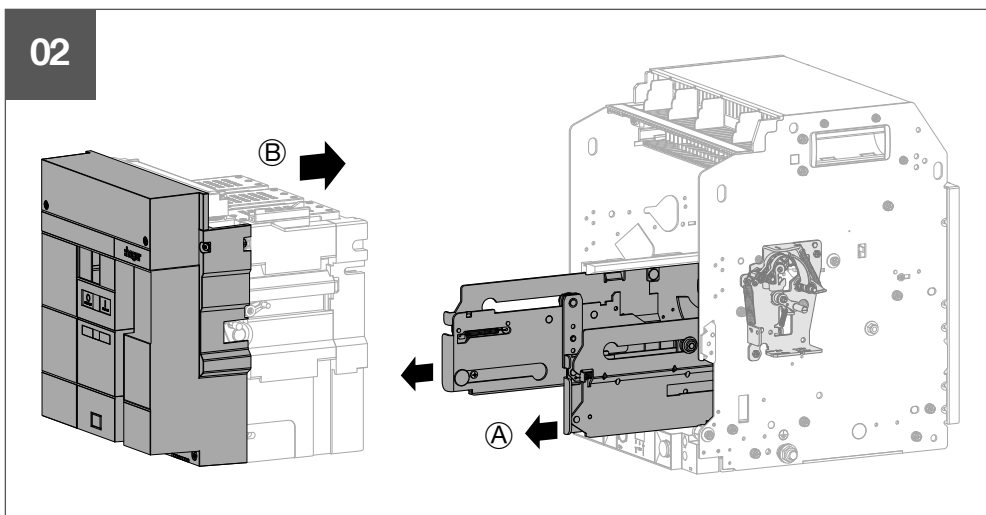
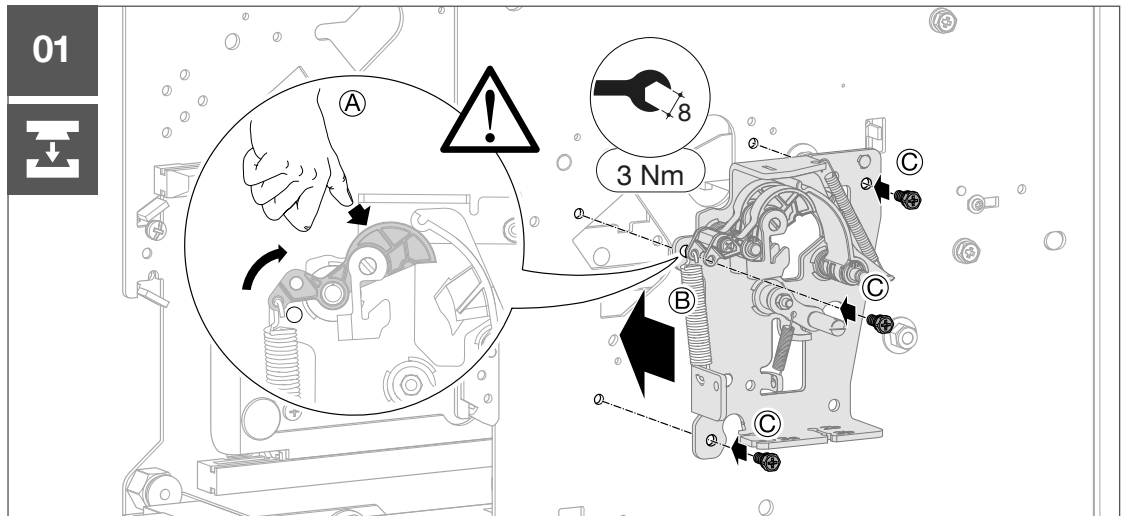
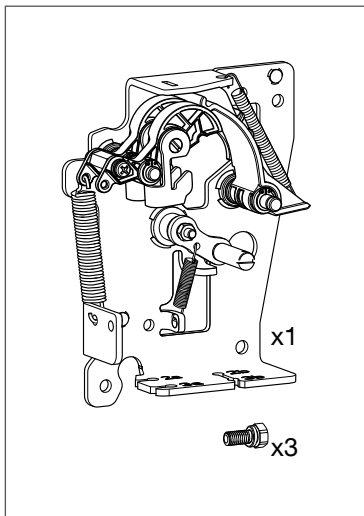
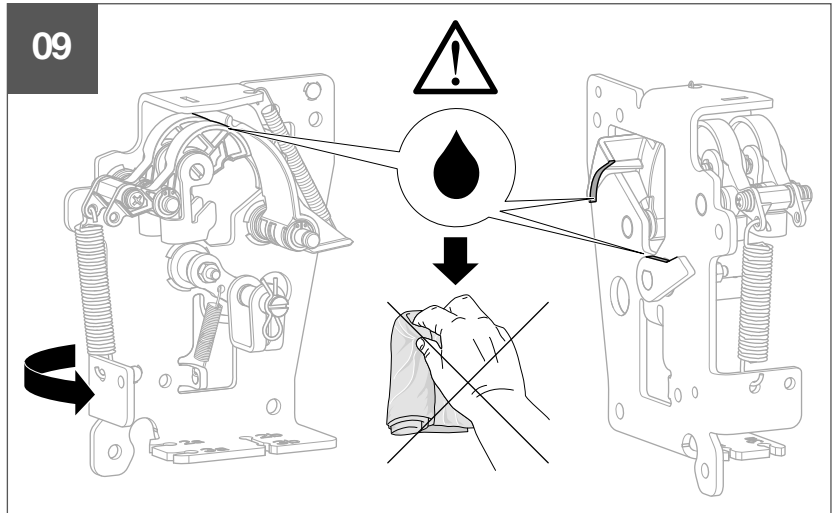
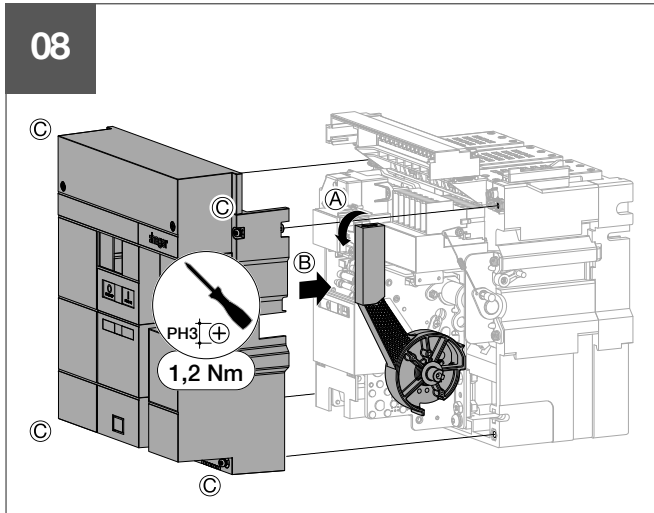
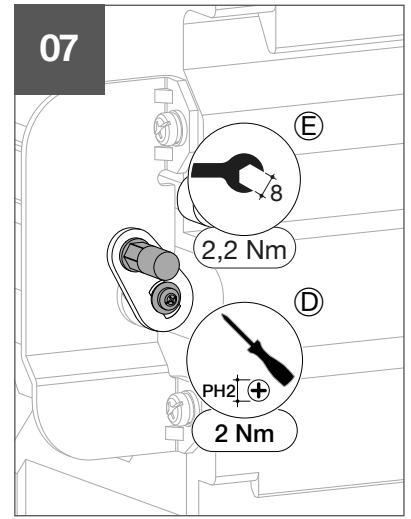
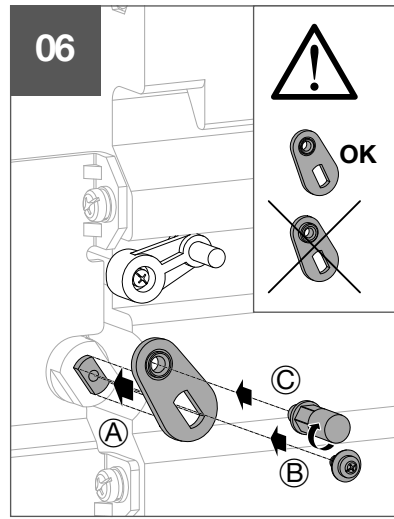
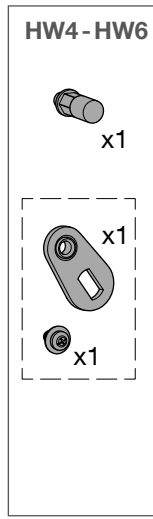
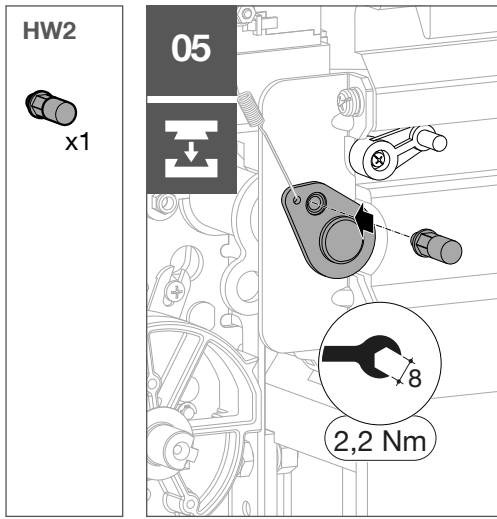
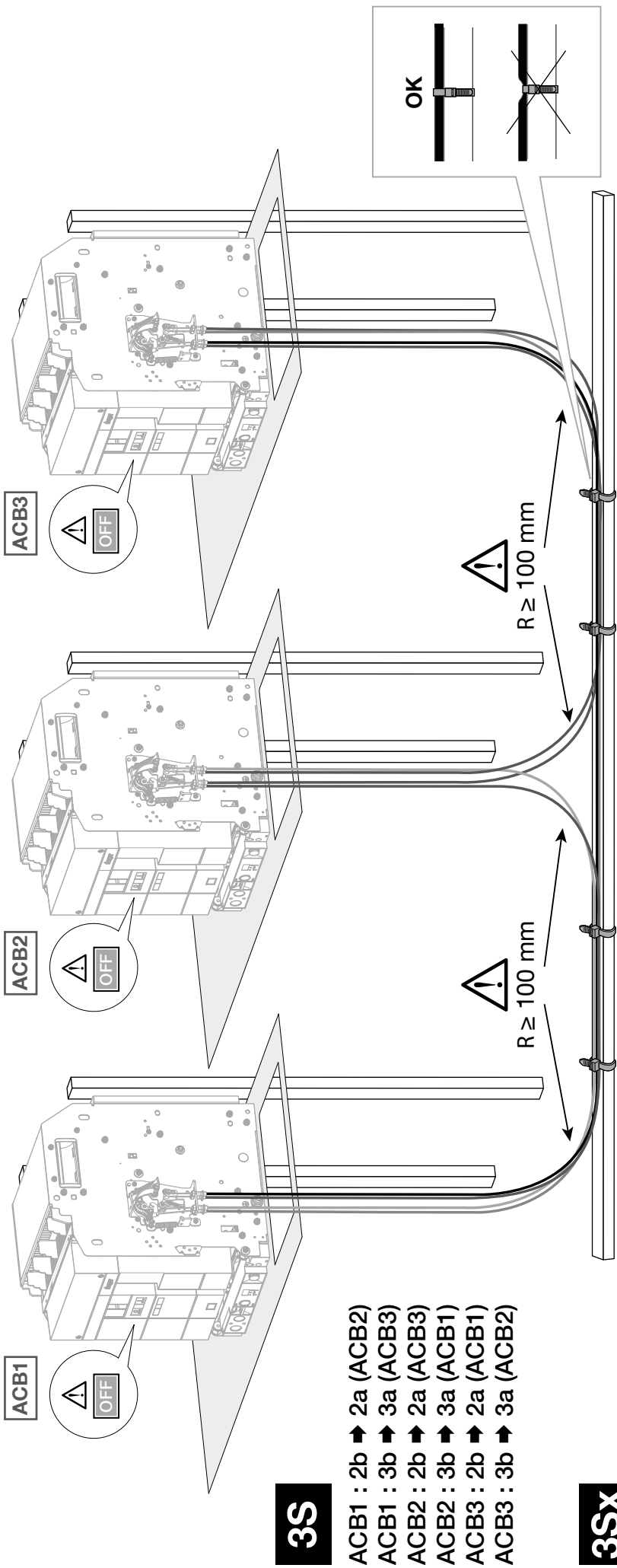


HWY237H







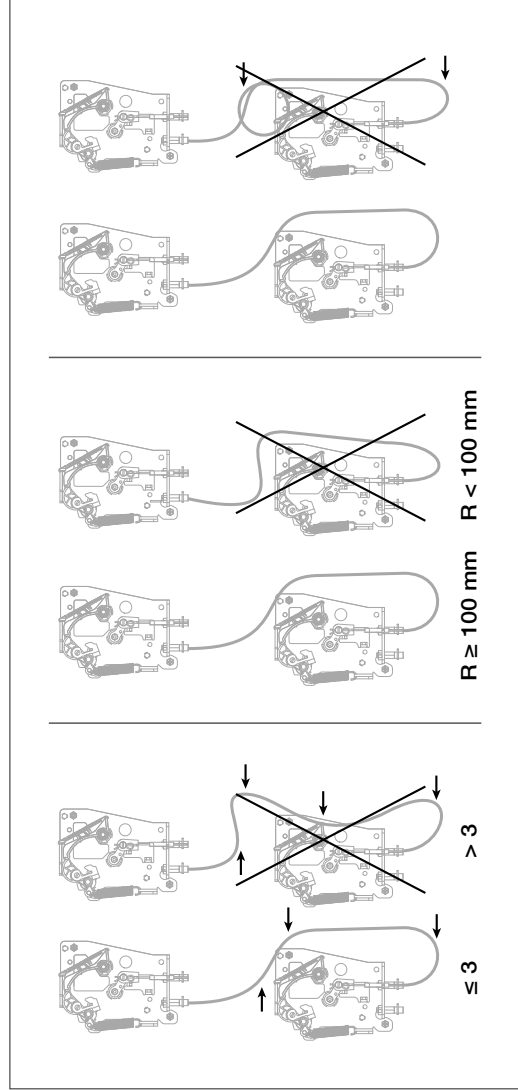
3S

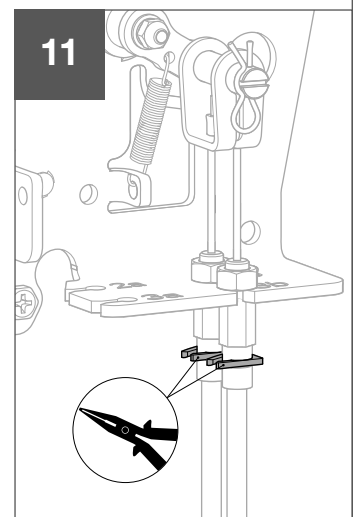
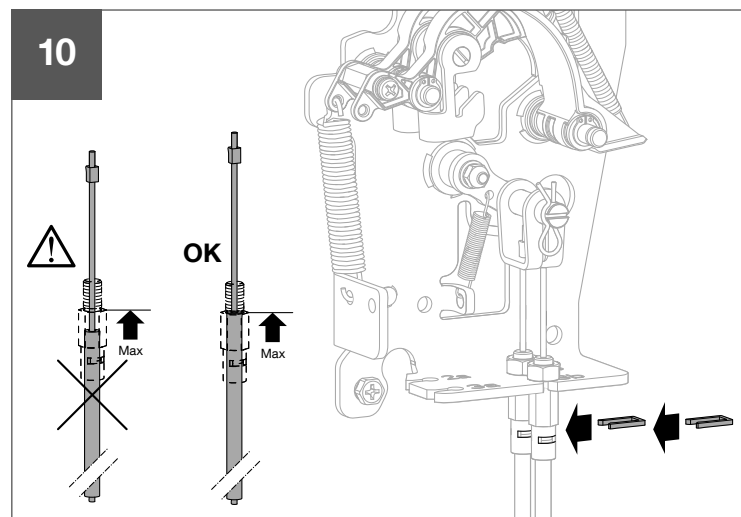
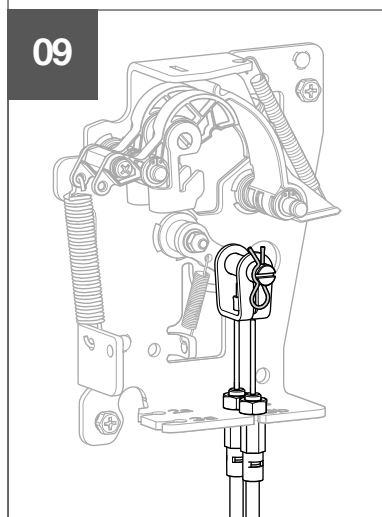
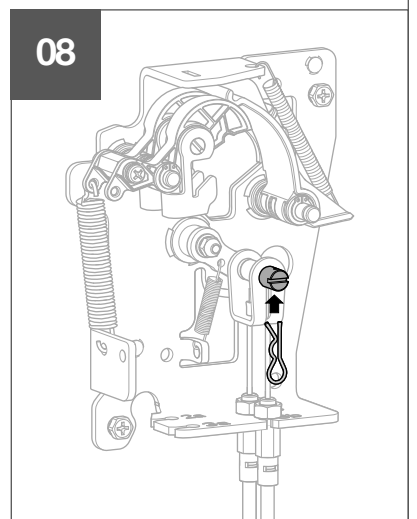
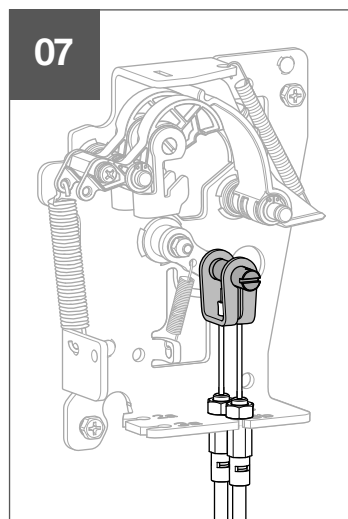
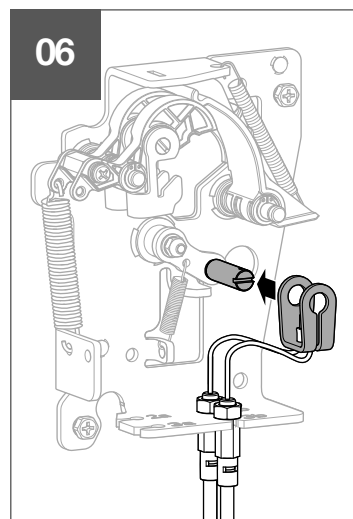
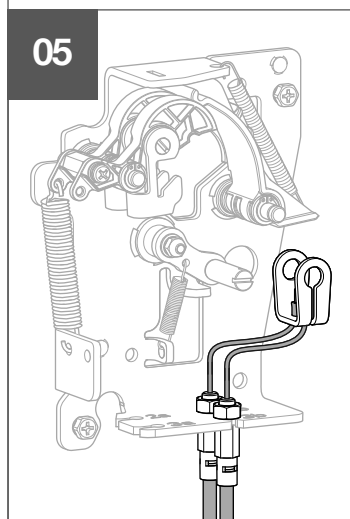
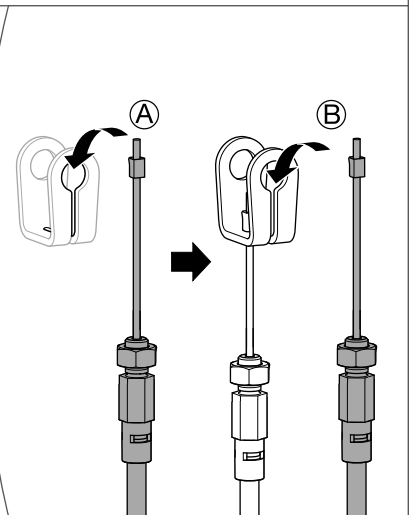
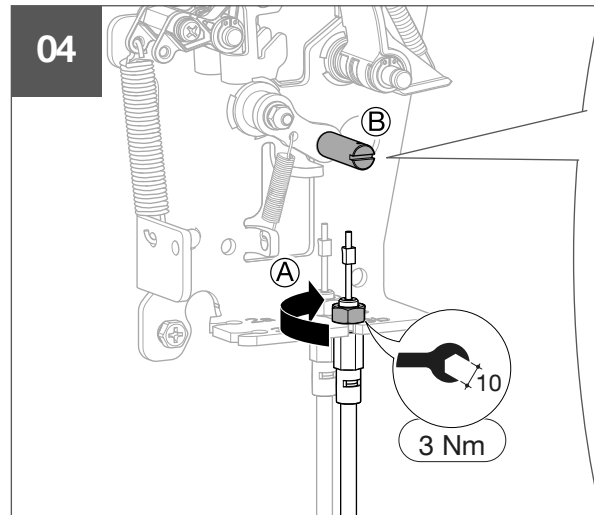
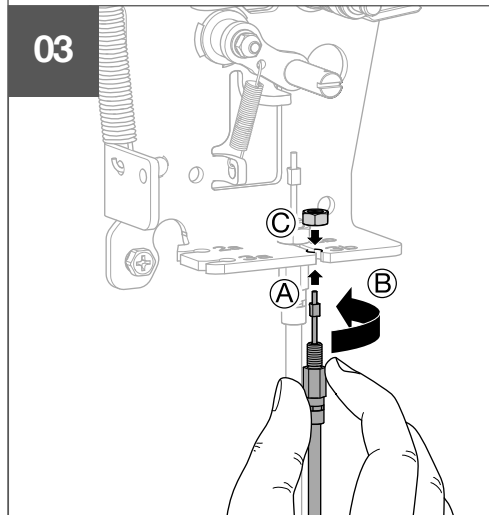
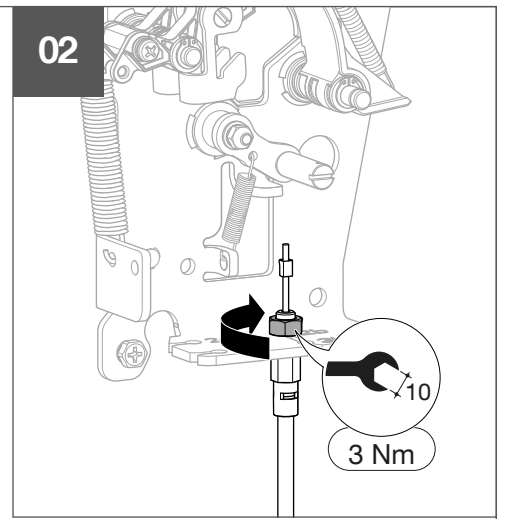
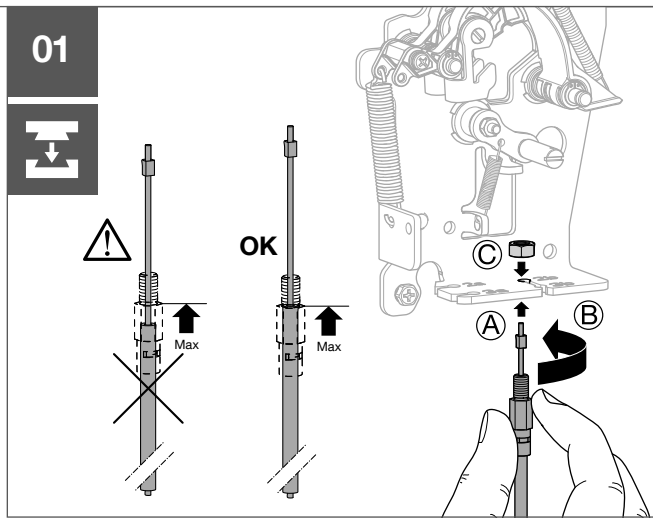
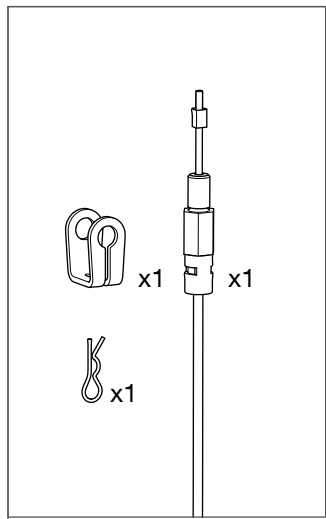
- ACB1 : 2b → 2a (ACB2)
- ACB1 : 3b → 3a (ACB3)
- ACB2 : 2b → 2a (ACB3)
- ACB2 : 3b → 3a (ACB1)
- ACB3 : 2b → 2a (ACB1)
- ACB3 : 3b → 3a (ACB2)

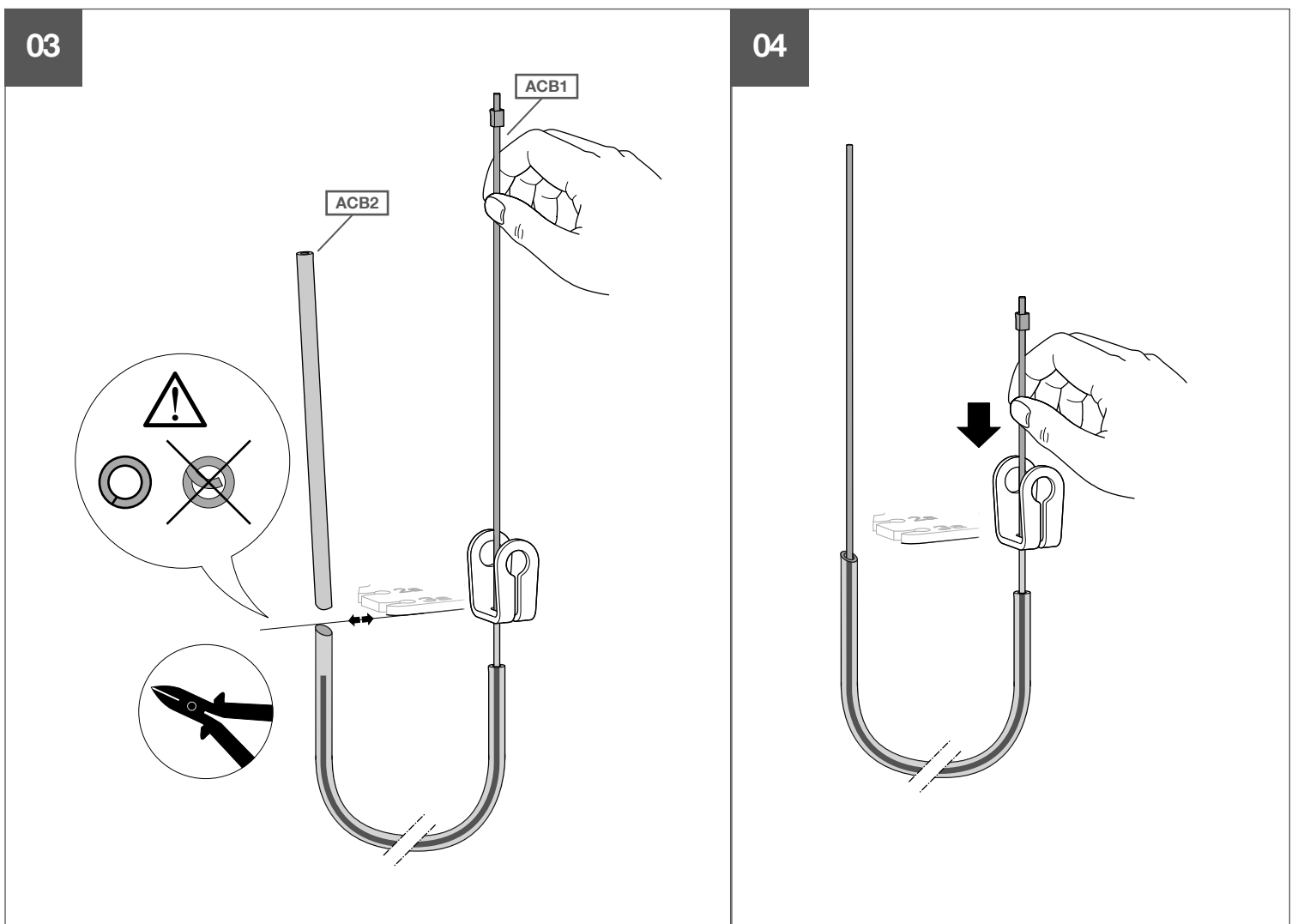
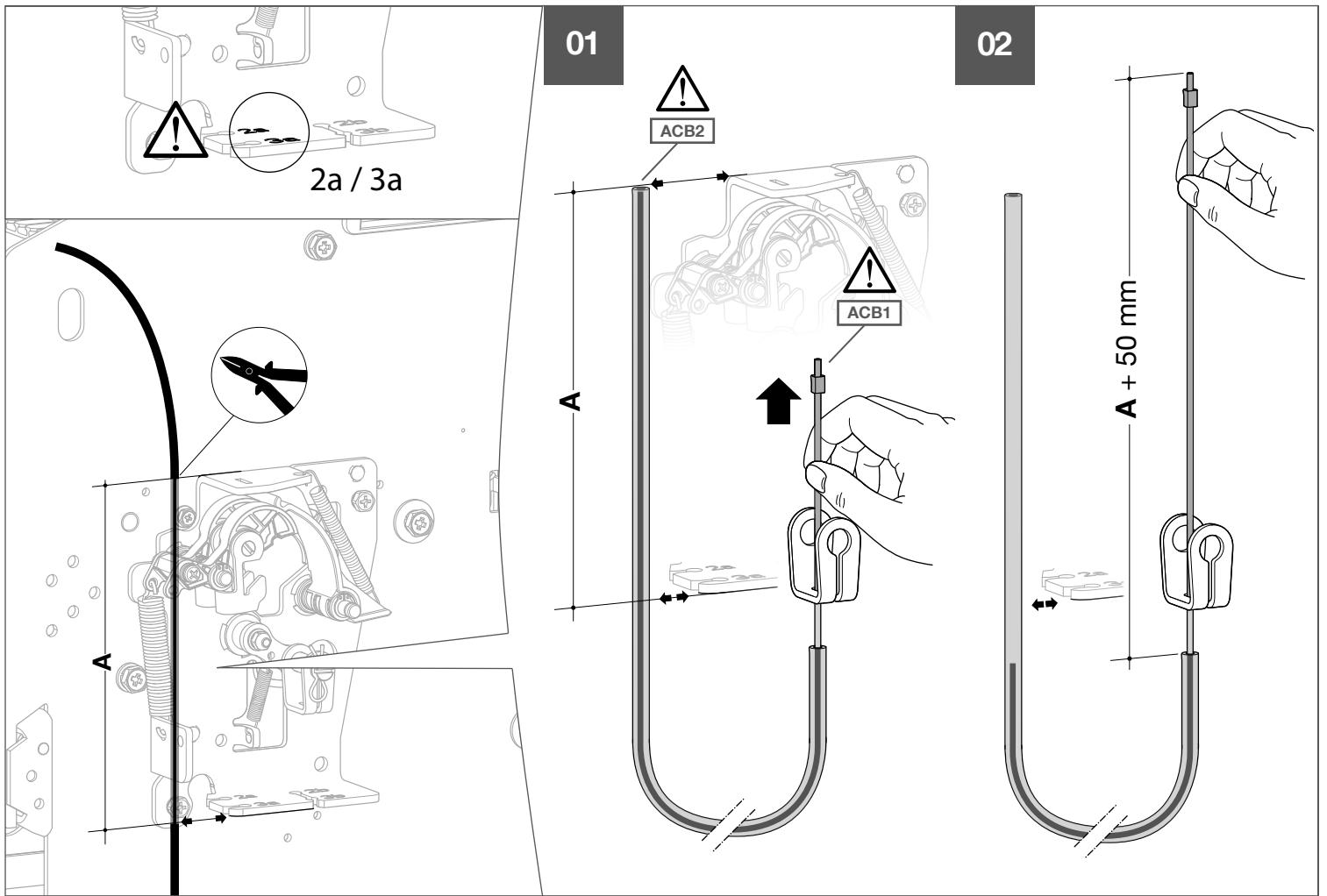
3Sx

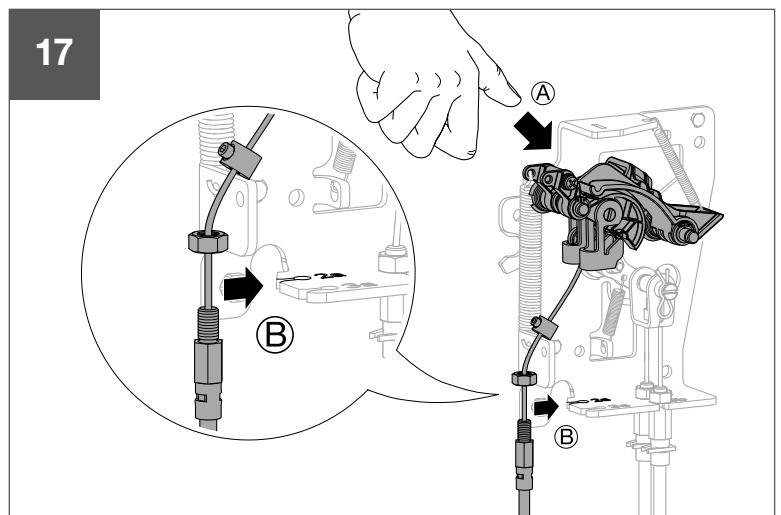
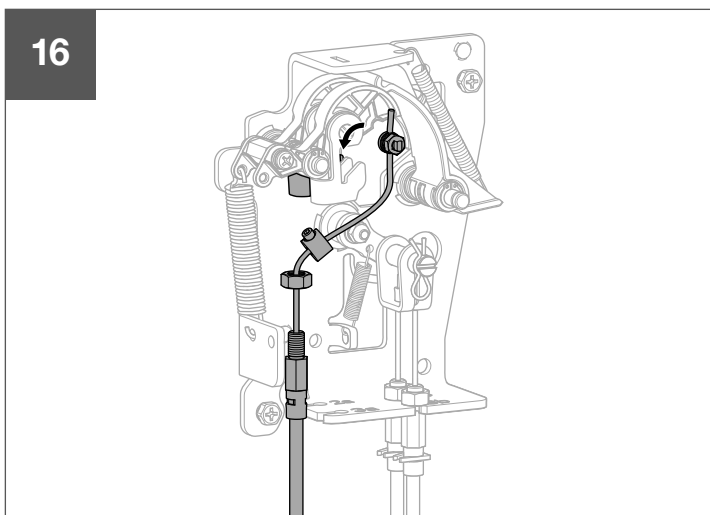
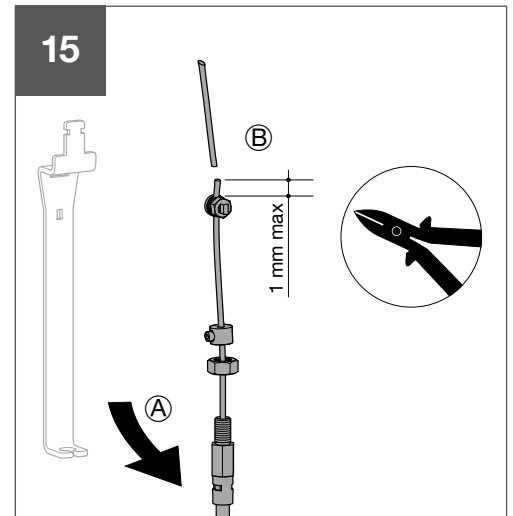
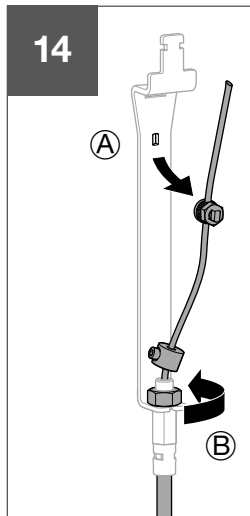
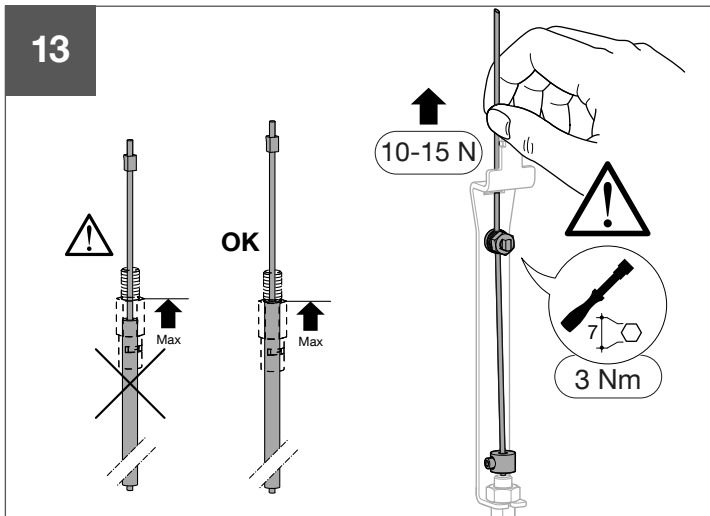
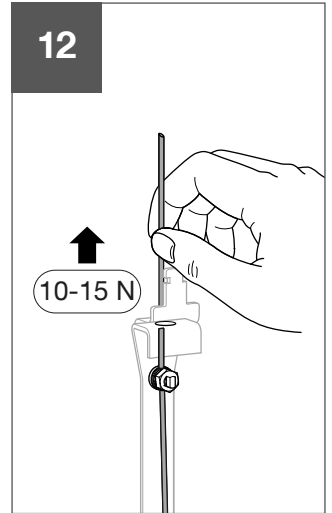
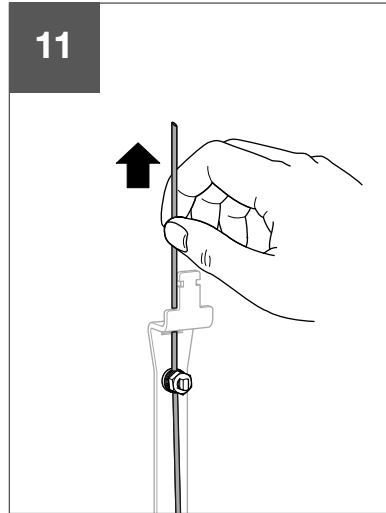
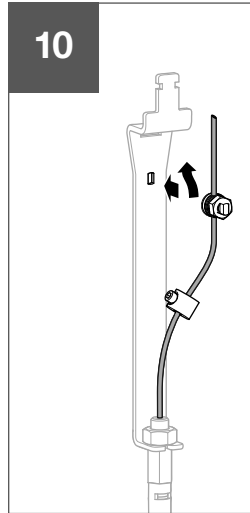
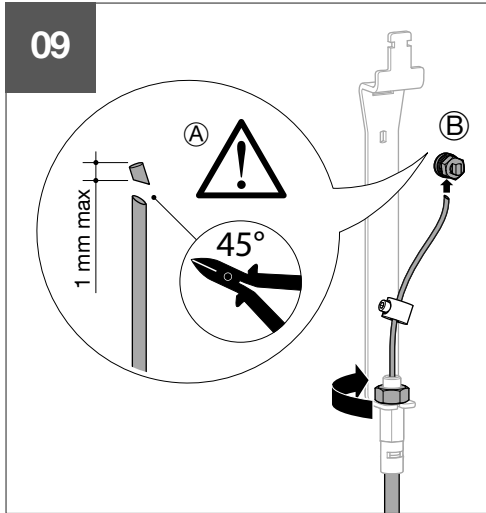
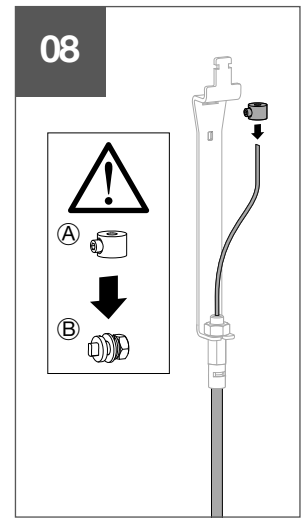
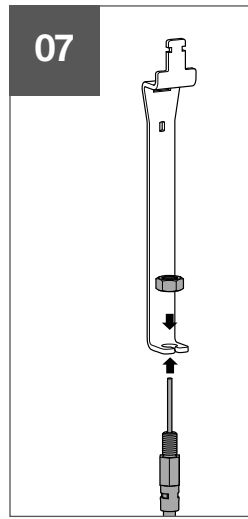
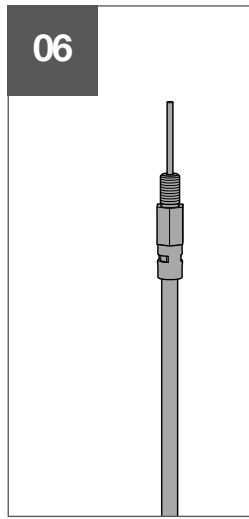
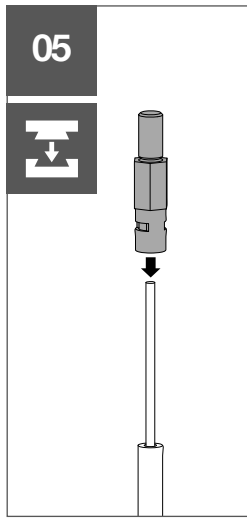
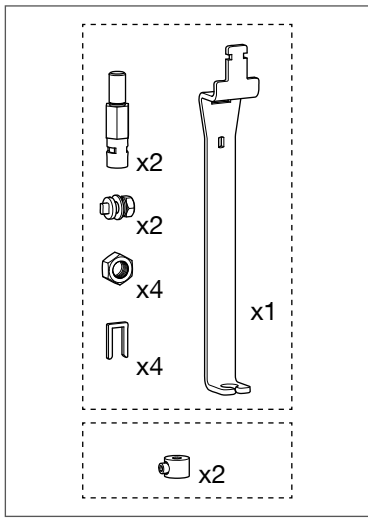
- ACB1 : 2b → 2a (ACB2)
- ~~ACB1 : 3b → 3a (ACB3)~~
- ACB2 : 2b → 2a (ACB3)
- ACB2 : 3b → 3a (ACB1)
- ~~ACB3 : 2b → 2a (ACB1)~~
- ACB3 : 3b → 3a (ACB2)

Warning !
After setting, if cable management is changed, setting must be redo.

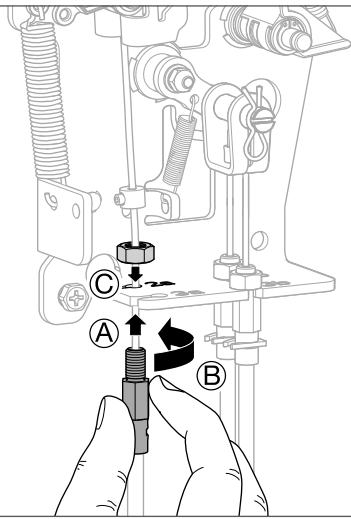
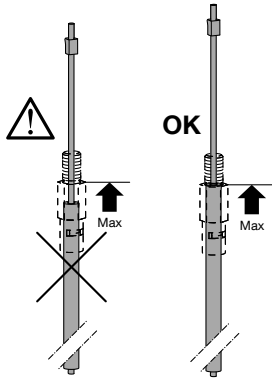




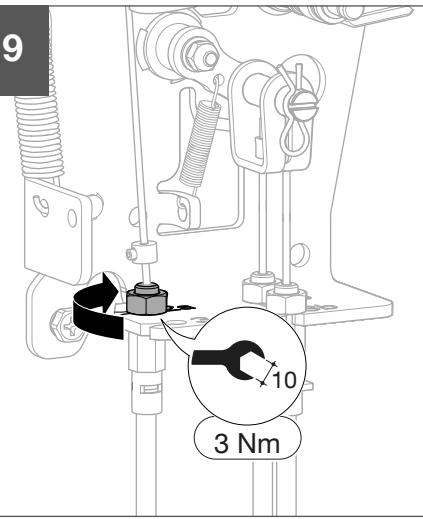




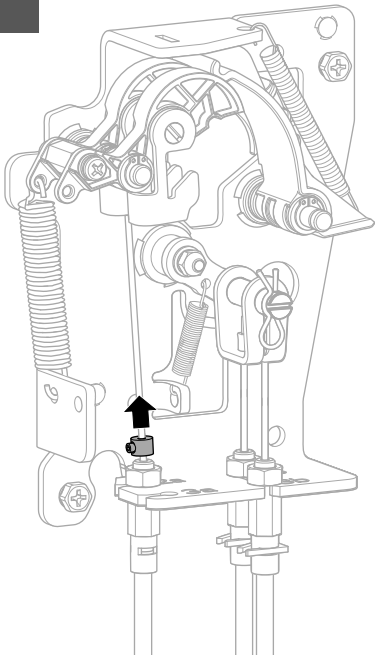
18



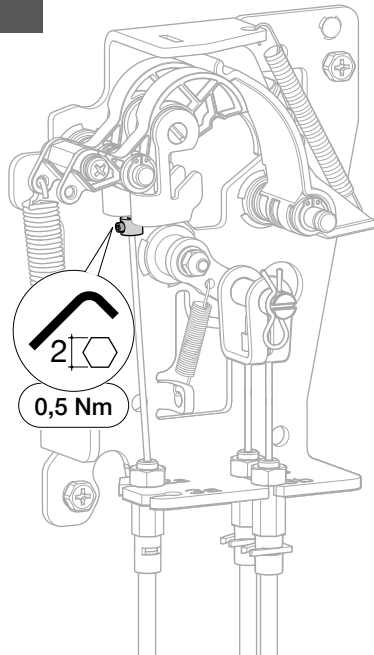
19



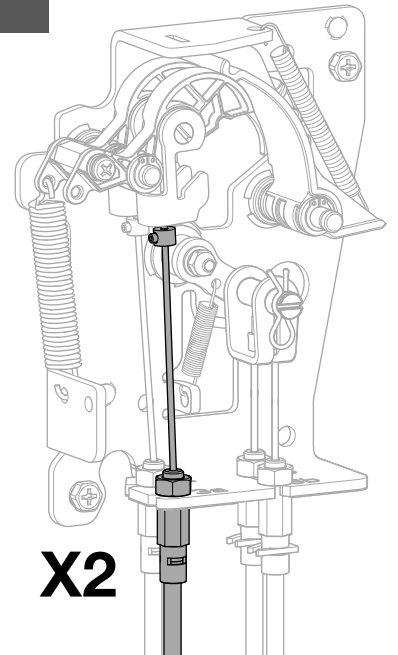
20



21

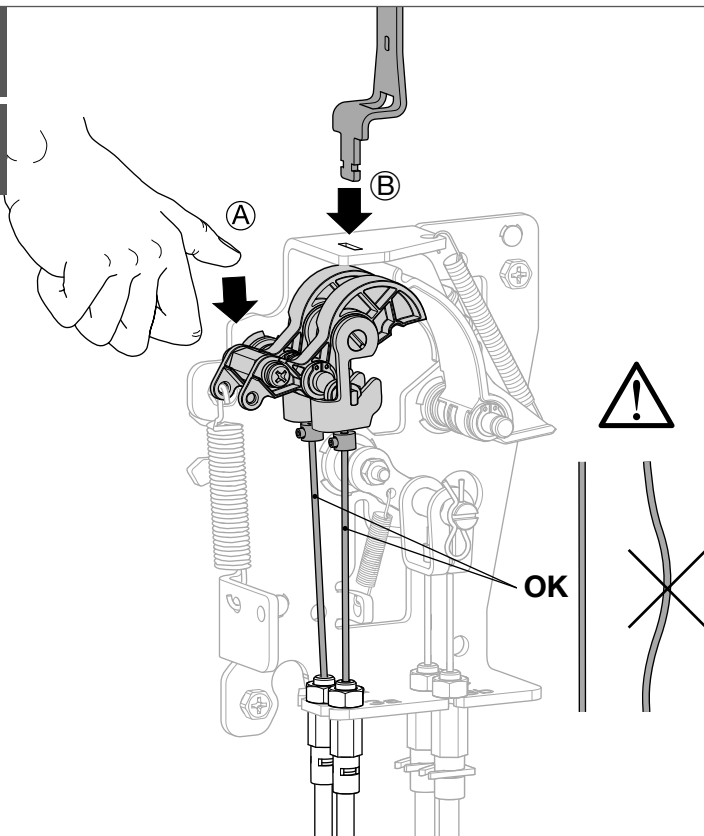


22

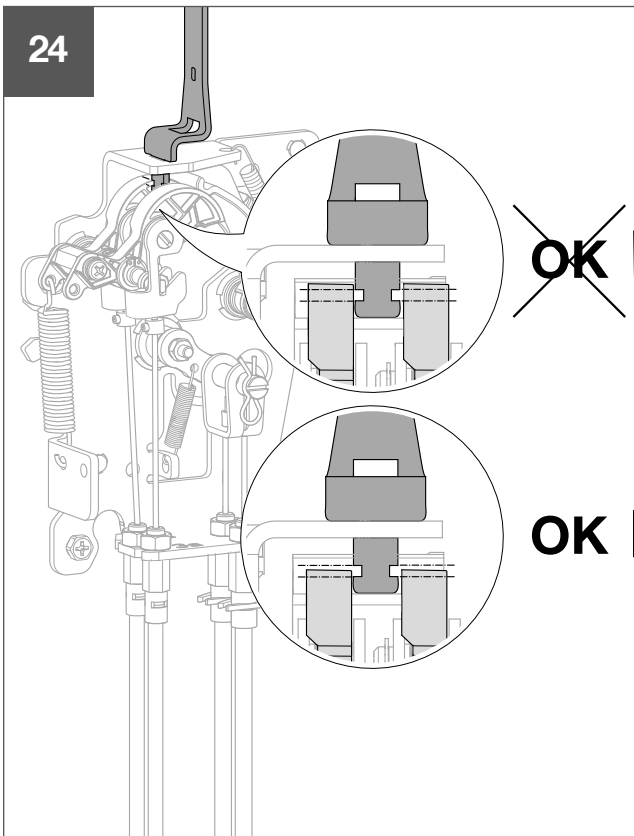


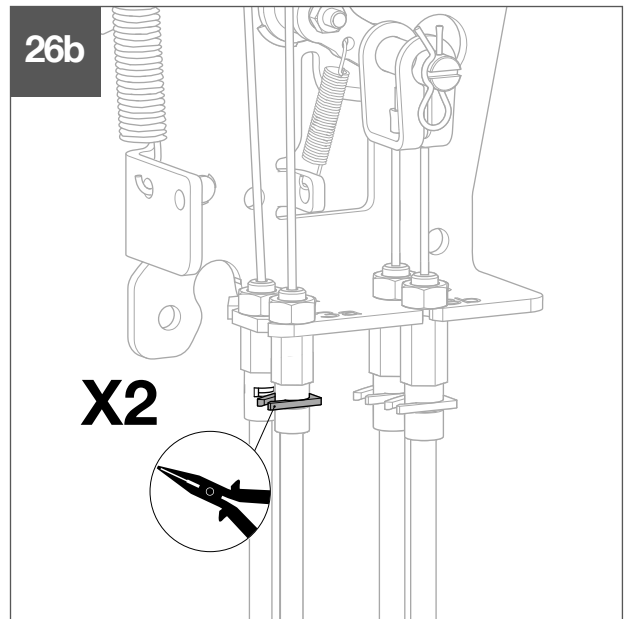
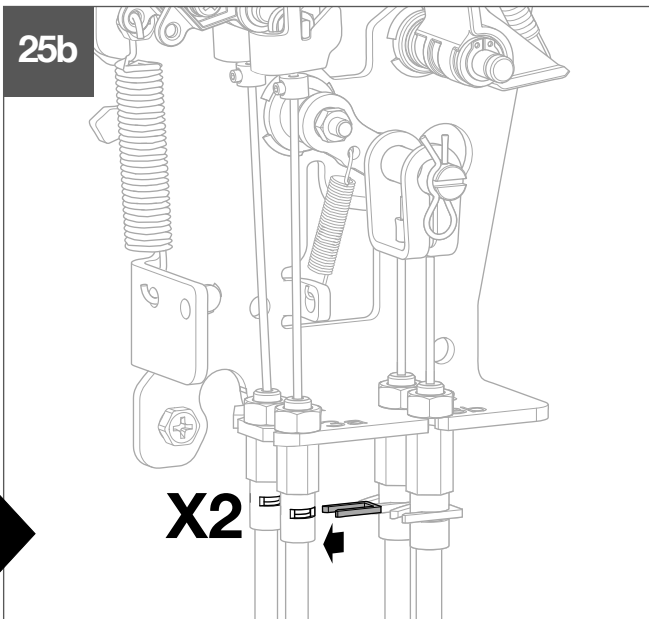
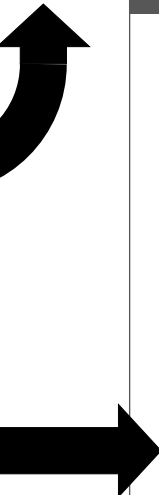
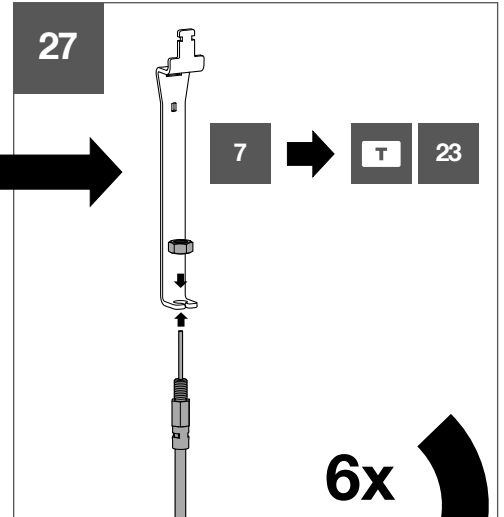
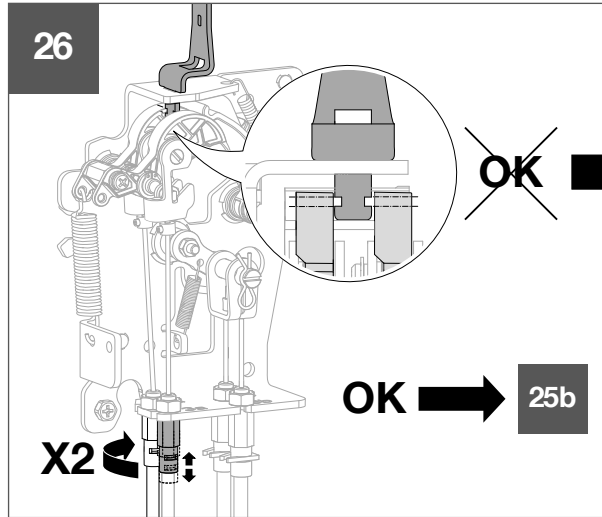
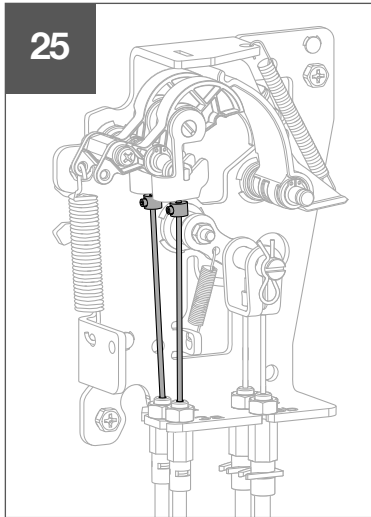
23

T



24





T

⚠ TEST WARNING → **6LE009728Aa**