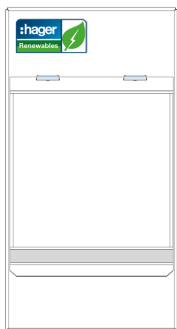
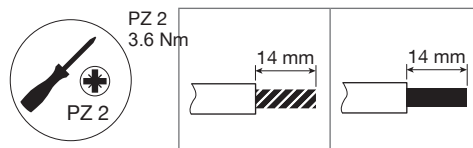


ZD0928

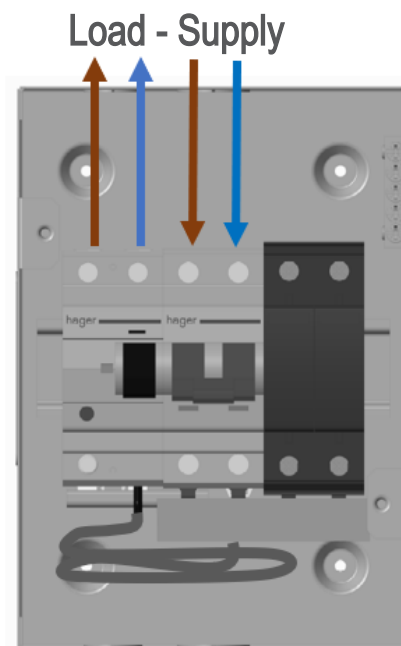
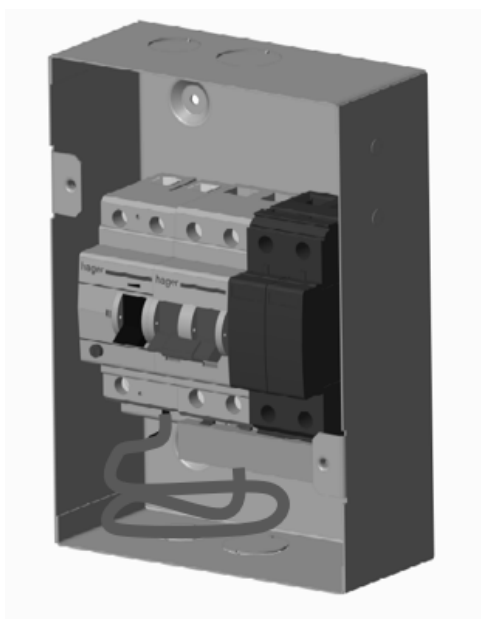


**VR440EV**  
**VR640EVSPD**  
User instructions

**TT/ TN-S/ TNC-S**



**100A Switch 40A RCBO + Type 2 Surge Protection**



Remove the desired knockouts on the enclosure for the load and supply cables.

Bring the mains supply into the top of the enclosure and terminate into the top of the main switch and torque to 3.6Nm.

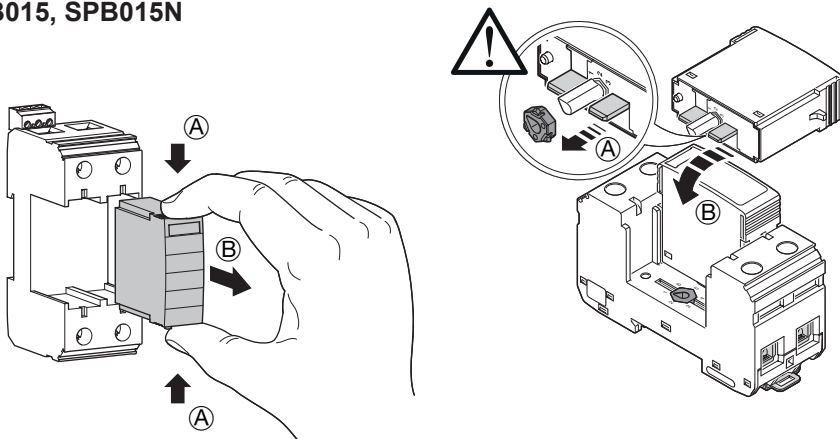
The outgoing supply cable for the car charger or similar will be terminated into the top of the RCBO and torque to 3.6Nm

**Key Specifications**

- Power Supply System -TN / TT
- 40A RCBO 6kA 30mA Switched Neutral rated at 36A for continuous loading
- Requirement class -SPD class II acc. to IEC 61643-11; SPD Type 2 acc. to EN 61643-11 (SPD Version)
- Max. continuous operating voltage  $U_c$  -L-N: 275 V a.c. / PE: 260 V a.c.
- Nominal voltage  $U_n$  -230/400 V AC 50/60 Hz
- Nominal discharge current  $I_n$  (8/20) microseconds 20 kA (SPD Version)
- Max. discharge current  $I_{max}$  (8/20) microseconds 40 kA (SPD Version)

<b>Interface characteristics</b>	
<b>Rated &amp; operational voltage (Un / Ue)</b>	230V a.c. 50Hz
<b>Rated insulation voltage (Ui)</b>	320V a.c. 50Hz
<b>Rated impulse withstand voltage (Uimp)</b>	4kV
<b>Rated current of the Assembly (InA)</b>	36A
<b>Rated current of an Outgoing circuit (Inc)</b>	RCBO 36A
<b>Rated conditional short-circuit current of the ASSEMBLY (Icc)</b>	Annex ZB: 16 kA rms at 250V, power factor 0.6 with equipment and arrangements specified in Hager's technical documentation / catalogue.
<b>Protection against electric shock</b>	Consumer unit shall be installed in an electrical system conforming to the current edition of IEC 60364 / BS 7671
<b>Rated diversity factor (RDF) / Values of assumed loading</b>	<p>Note: RDF only applies to continuously and simultaneously loaded circuits.</p> <p>Inc = 36A, RDF = 1.0.</p> <p>In principle, this means adjacent circuit-breakers having a load 'on' time exceeding 30 minutes or where a load not exceeding 30 minutes has an 'off' time less than the 'on' time, will need to have the rated diversity factor applied as indicated.</p>
<b>Rated frequency (fn)</b>	50 Hz
<b>Pollution degree</b>	2
<b>Types of system earthing for which the ASSEMBLY is designed</b>	TNC-S, TN-S when installed in an electrical installation complying with BS 7671
<b>Indoor use only</b>	
<b>Stationary ASSEMBLY</b>	
<b>Degree of protection</b>	IP30 (VR440EV & VR640EVSPD) with Door closed and full compliment of outgoing devices and or blanks fitted. Note: The installer is responsible to maintain the IP integrity using suitably rated IP glands
<b>Intended use</b>	Intended for use in garages or similar premises.
<b>Electromagnetic compatibility (EMC) classification</b>	EMC Environment B
<b>External design</b>	VR : Wall-mounted, surface type, enclosed assembly.
<b>Mechanical impact protection</b>	IK 05
<b>The type of construction</b>	Fixed parts
<b>Type A DBO (Distribution board for use by ordinary persons)</b>	

SPB015, SPB015N



Fault indication

