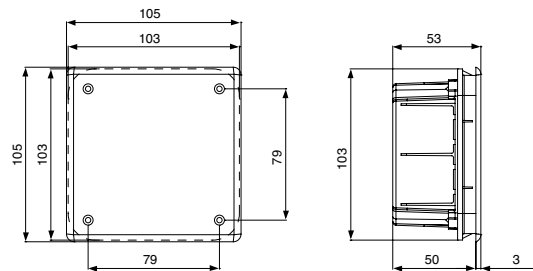


Certificazioni: EN 60670-22

CASS 01 INC



Dimensioni: 92x92x45 mm
 Colore coperchio bianco RAL 9003
 Confezionamento 140 (140x1) p

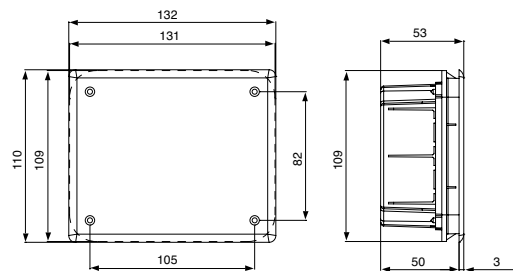


Codice B04881

CASS 02 INC



Dimensioni: 118x96x50 mm
 Colore coperchio bianco RAL 9003
 Confezionamento 118 (118x1) p

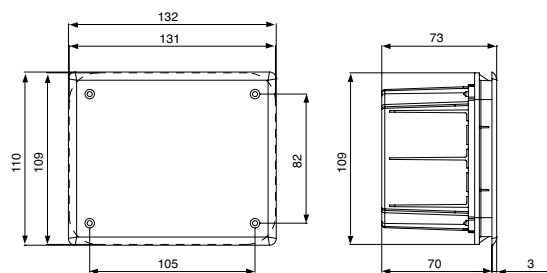


Codice B04882

CASS 03 INC



Dimensioni: 118x96x70 mm
 Colore coperchio bianco RAL 9003
 Confezionamento 80 (80x1) p

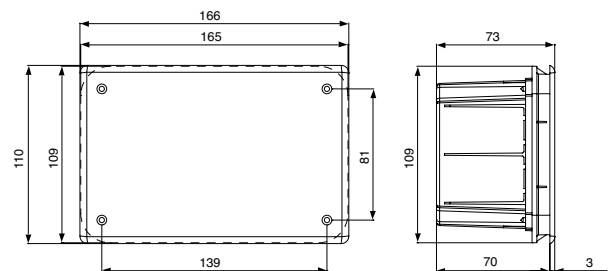


Codice B04883

CASS 04 INC



Dimensioni: 152x98x70 mm
 Colore coperchio bianco RAL 9003
 Confezionamento 82 (82x1) p

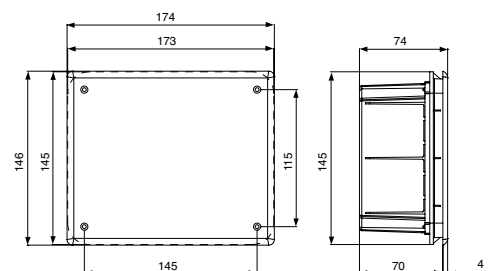


Codice B04884

CASS 05 INC

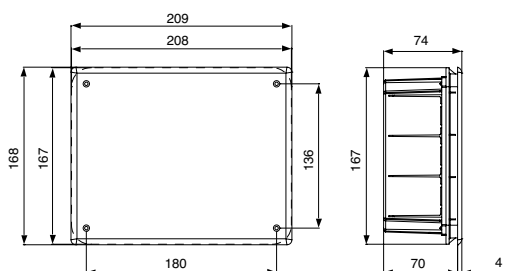


Dimensioni: 160x130x70 mm
 Colore coperchio bianco RAL 9003
 Confezionamento 45 (45x1) p



Codice B04885

Certificazioni:  EN 60670-22

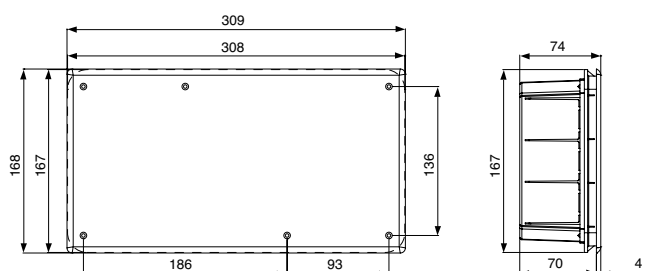


CASS 06 INC

Dimensioni: 196x152x70 mm
 Colore coperchio bianco RAL 9003
 Confezionamento 36 (36x1) p



Codice B04886

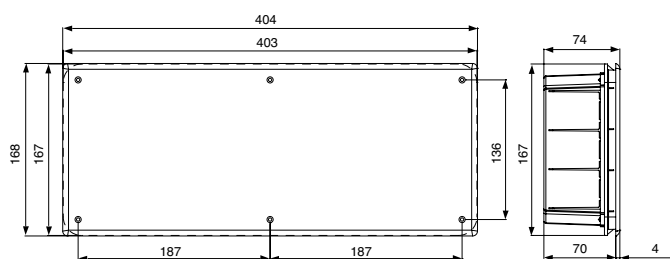


CASS 07 INC

Dimensioni: 294x152x70 mm
 Colore coperchio bianco RAL 9003
 Confezionamento 24 (24x1) p



Codice B04887

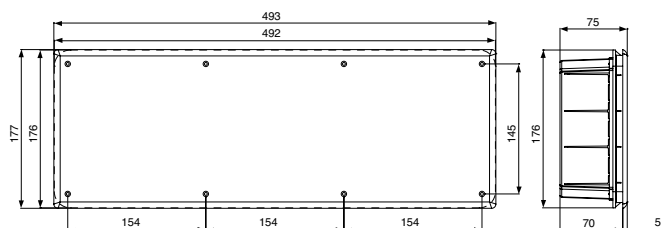


CASS 08 INC

Dimensioni: 392x152x70 mm
 Colore coperchio bianco RAL 9003
 Confezionamento 16 (16x1) p



Codice B04888

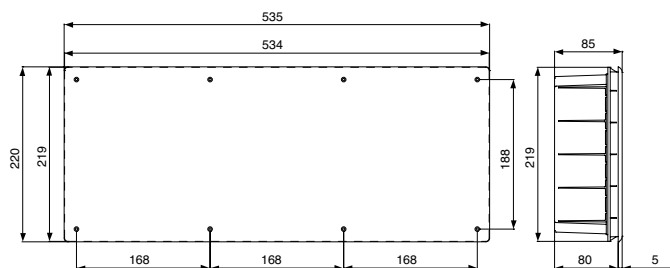


CASS 09 INC

Dimensioni: 480x160x70 mm
 Colore coperchio bianco RAL 9003
 Confezionamento 12 (12x1) p



Codice B04889



CASS 10 INC

Dimensioni: 516x202x80 mm
 Colore coperchio bianco RAL 9003
 Confezionamento 10 (10x1) p



Codice B04890