

BS EN 61009-1 (GB)
BS EN 62606

ARRxxxU / ARLxxU
RCBO with dangerous arc detection



RCBO-AFDD 1M 6A - 32A
B and C curve 6kA type A 30mA

B curve	C curve
ARR906U	ARR956U
ARR910U	ARR960U
ARR916U	ARR966U
ARR920U	ARR970U
ARR925U	ARR975U
ARR932U	ARR982U

RCBO-AFDD 1M 6A - 32A
B and C curve 6kA type A 30mA LFL

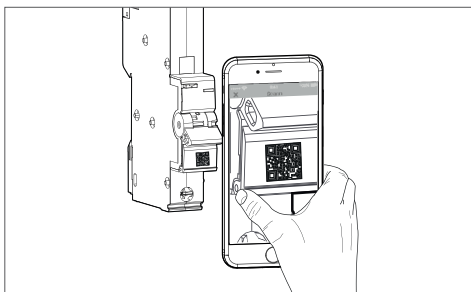
B curve	C curve
ARL906U	ARL956U
ARL910U	ARL960U
ARL916U	ARL966U
ARL920U	ARL970U
ARL925U	ARL975U
ARL932U	ARL982U



Information

For more Information, scan the QR-Code on the product.

For further technical information and for installation in Hager Distribution Board, review the Installation Guidance Notes available in the products download section on Hager website.



Safety notice



The AFDD (Arc Fault Detection Device) may only be installed, connected and serviced by a qualified electrician.

Before mounting, the AFDD must be checked for external damage. If any damage or other defect is found, the device must not be mounted.

The national regulations, safety regulations and installation standards BS 7671 must be observed.

RCD characteristics 5 ldn compliance (according to table 1 & 2 BS EN 61009-1) for RCDs.

Design and layout of the device

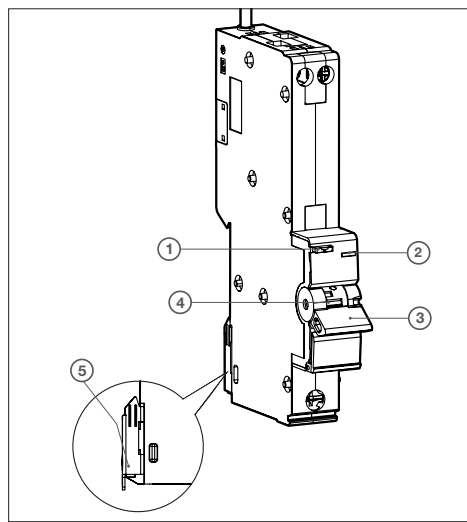


Fig 1: Layout of the device RCBO-AFDD

- ① Test button
- ② LED status display
- ③ Handle
- ④ Yellow flag
- ⑤ Mounting metal rail clip

Function



RCBO-AFD in 1 module ARRxxxU is a single device consisting of a miniature circuit breaker (MCB) unit and residual current detection (RCD) unit with integrated Arc fault detection (AFD) unit (3 in 1).

The AFDD mitigates the risk of a fire in the final electrical circuits of a fixed installation due to arcing fault currents, which under certain conditions present a fire ignition risk due to dangerous arc fault.

Tools

	LINE	LOAD
(mm ²)	1 to 16 □	1 to 25 □
	12 mm	10 mm
	⊕ PZ2	⊕ PZ2
	3,5 Nm	2,4 Nm

Fig 2: Tools

Information for electricians



Installation and electrical connection



DANGER !

Electric shock when touching live parts!

Electric shock can lead to death!

- Before commencing work ensure suitable isolation procedures have been followed.

Mount device

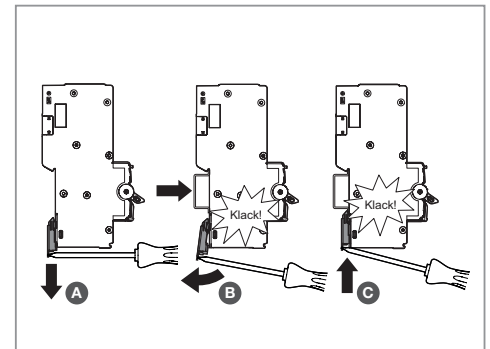


Fig 3: Mounting the RCBO-AFDD

- Open the rail clip.
- Insert the AFDD until it is connected.
- Press the metal clamp down.

The AFDD is fixed on the rail.

Connect device

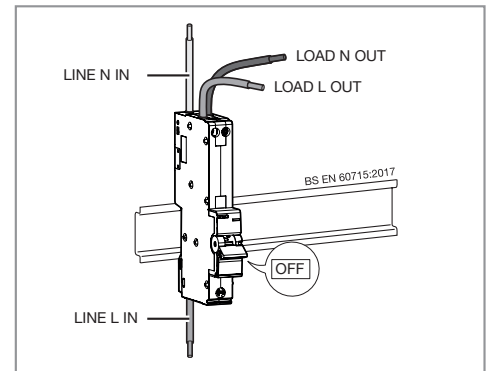


Fig 4: Connect the RCBO-AFDD

Wiring diagram

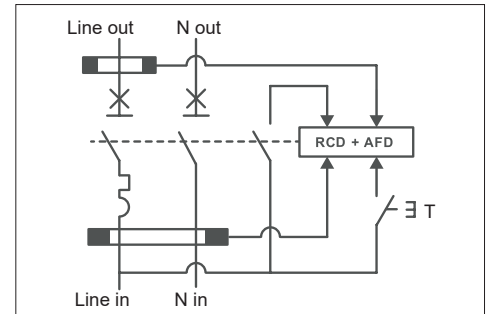


Fig 5: Wiring diagram

Disassembly

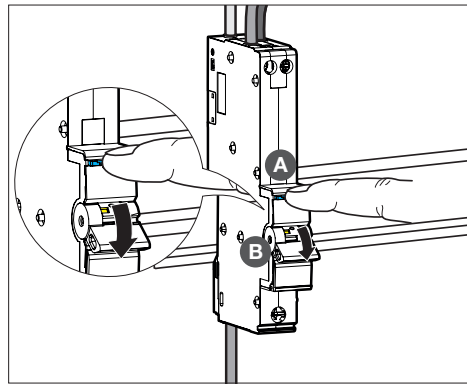
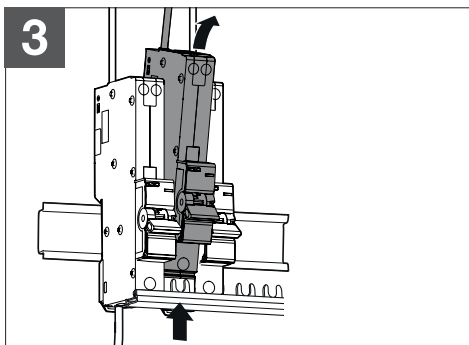
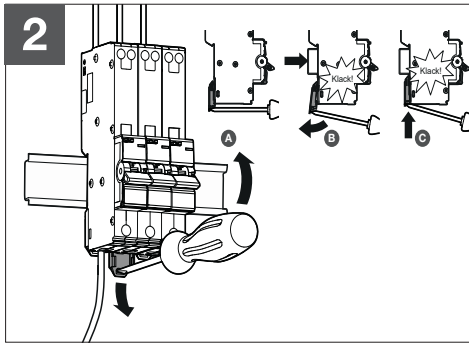
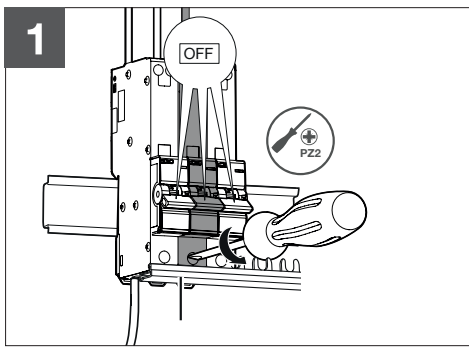


Fig 6: Testing the device

- Short press the test button **T**. The RCBO-AFDD tripped, i.e. the circuit must switch off.

i Notice
If the AFDD does not trip, check the status of the LED (table 1).

LED status for troubleshooting

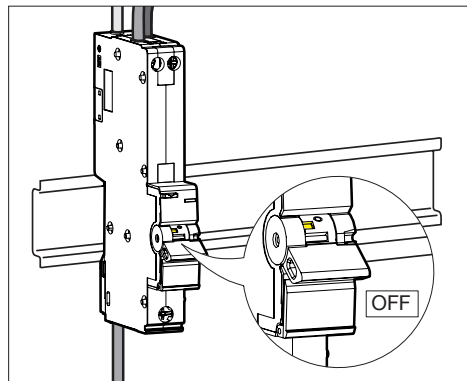


Fig 7: Handle position during testing: OFF
The handle is in the **OFF** position.

- Keep the test button **T** pressed, to open the color code.

INDICATOR	STATE	STATE
	Steady GREEN	AFDD is ON
	LED is OFF	AFDD is OFF
	Blinking RED/ GREEN + yellow flag absence	AFDD manual tripped
	Blinking RED/ GREEN + yellow flag presence	Overload or Short-Circuit
	Steady RED	Residual current fault
	Blinking RED/ YELLOW	Series arc fault
	Blinking RED	Parallel arc fault
	Steady YELLOW	Overvoltage
	Blinking YELLOW	Internal failure

Table 1: LED status display for a standard troubleshooting

i Notice
In case of an internal failure, replace the AFDD and contact the Hager technical support.

Connection to mobilephone

A mobile phone is required to use those functions. Refer to the mobility applications store to know the OS compatibility.

i Notice
Using the connected functions with your mobile phone requires to activate network functions (Bluetooth, WiFi) and to accept the application terms of use & privacy notice.
Only bluetooth 4.2 or above is supported.

- Install the Hager Pilot mobile application on your mobilephone.
- Follow further instructions on the mobile application.

LED status for Bluetooth® connection

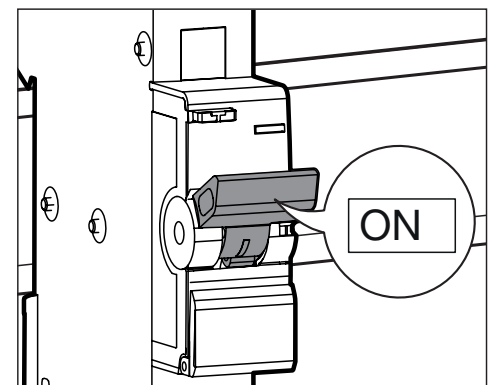


Fig 8: Handle during testing: ON
The handle is in the **ON** position.

- Press the test button **T** for **5 seconds** to activate bluetooth mode.

INDICATOR	STATE	STATE
	Blinking BLUE	Bluetooth enabled
	Steady BLUE	Bluetooth connected
	Blinking RED/BLUE	Update mode (only overload and short- circuit protection in this mode)
	Blinking BLUE/ YELLOW	Trace mode (use for technical Hager support)
	Blinking (BLUE/ GREEN)	Firmware update confirmation requested

Table 2: LED status display for Bluetooth® connection

EU and UKCA Declaration

Hereby, Hager Electro SAS, declares that the AFDD products are in compliance with SI 2017/1206 Radio Equipment Regulations 2017 and with radio emission directive 2014/53/EU
– Operating frequency band 2.4 to 2.483 GHz.
– Maximum radio frequency power 10mW.
Declarations of conformity can be downloaded on www.hager.com

Testing

The test button **T** is used for testing the device. The AFDD should trip following a short press of the test button. Following this the device can be switched on again.

Test device

! ATTENTION !
Insulation tests at 500V DC may damage this product!
Do this test only when the handle is off.
If the handle is OFF you don't have to disconnect the cable.

i Notice
The AFDD function must be tested after installation. The supply voltage must be present.
The RCBO-AFDD must trip within one second. If the device does not trip, it must be replaced by an competent electrician.