

Safety instructions

Electrical equipment must only be installed and assembled by a qualified electrician in accordance with the relevant installation standards, regulations, directives and safety and accident prevention directives of the country.

Failure to comply with these installation instructions may result in damage to the device, fire or other hazards.

Function

Universal socket outlets for electrical installations in buildings.

- Single switched universal socket comes with a single pole ON/OFF switch.
- 2+3 pin universal socket is equipped with an additional 2pin outlet which is suitable for plug types "A" and "C" (see table below).

Compatibility

The 3pin universal outlets are only compatible with the following plug types (see table):



WARNING!

Any use of plugs other than listed in the table below may cause fire or other dangers due to insufficient contacting!

Plugs	Plug types	Plug designs	Pins	Amperage	Plug standards
	Type "A"	2pole flat pin	L, N	max. 10A	GB 1002
	Type "B"	3pin UL plug	L, N,	max. 15A	NEMA 5-15
	Type "C" Europlug	2pole round pin (Ø 4.0 mm)	L, N	max. 2.5A	CEE 7/16
	Type "C"	2pole round pin (Ø 4.8 mm)	L, N	max. 16A	CEE 7/17
	Type "D"	3pole round pin	L, N,	max. 5A	BS 546
	Type "G"	3pin	L, N,	max. 13A	BS 1363-1
	Type "I"	3pin	L, N,	max. 10A	GB 1002

Correct use

- For the flush-mounted installation in standard wall boxes (recommended wall box depth ≥ 35 mm).
- Only suitable for use in indoor areas with no drip and no spray water.

Technical data

Rated voltage:	250 V~
Frequency:	50/60 Hz
Socket rated current:	16 A
Conductor cross-section of screw terminals:	min. $1 \times 1.5 \text{ mm}^2$... max. $2 \times 4 \text{ mm}^2$
Distance of fixing holes:	60.3 mm

Information for electricians

Installation and electrical connection



DANGER!

Touching live parts can result in an electric shock.

An electric shock can lead to death.

Disconnect the connecting cables before working on the device and cover all live parts in the area!

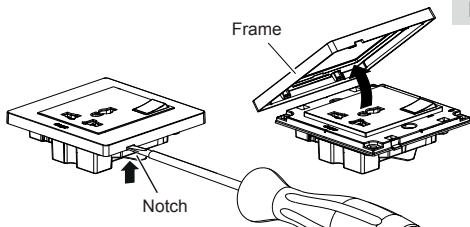
Preparing the device for installation

(for example "16A single switched universal socket")

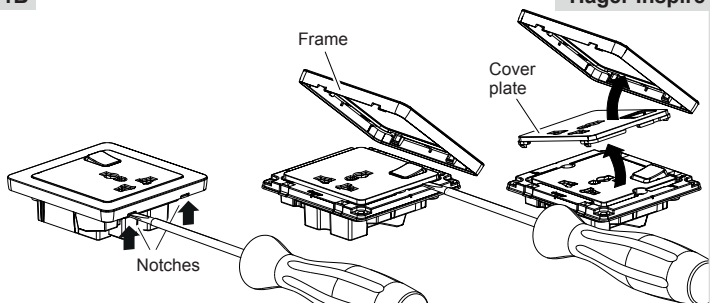
The device is delivered with a transparent dust protection sticker. This sticker must remain on the device during the time of installation.

1A

Hager Muse



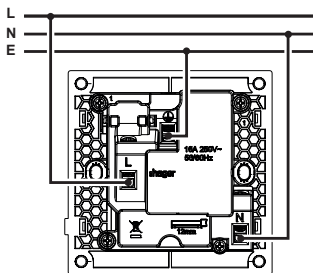
- **Hager Muse:** Carefully loosen the frame on the notch with a flat-blade screwdriver. Lift up and remove the frame (1A).



- **Hager Inspire:** Carefully loosen the frame on the notches with a flat-blade screwdriver. Lift up and remove the frame (1B).
- **Hager Inspire:** Remove the cover plate also with a flat-blade screwdriver (1B).

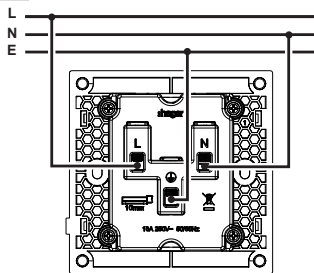
Connecting the device

2A



Single switched universal socket

2B



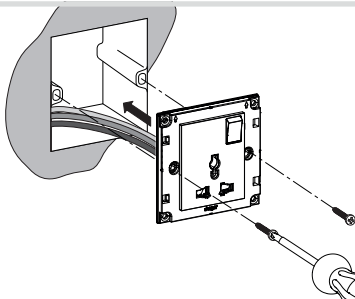
2+3pin universal socket

- Strip connection cables approx. 10 ... 12 mm.
- Wire the device according to the appropriate connection diagram (2A or 2B).

Installing the device into the wall box

(for example "16A single switched universal socket")

3



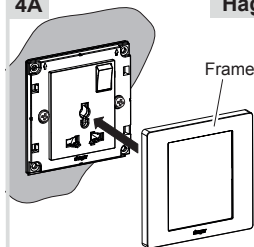
- After wiring, fix the device with the two screws attached into the wall box (3).

Assembling the covers

(for example "16A single switched universal socket")

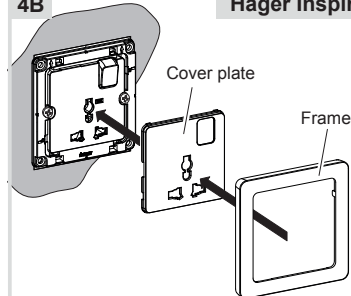
4A

Hager Muse



4B

Hager Inspire



- **Hager Muse:** Snap the frame onto the device (4A).
- **Hager Inspire:** Place the cover plate in the correct position and fix with frame (4B).
- Remove the dust protection sticker.



2-5gang frames are available for multiple combinations.