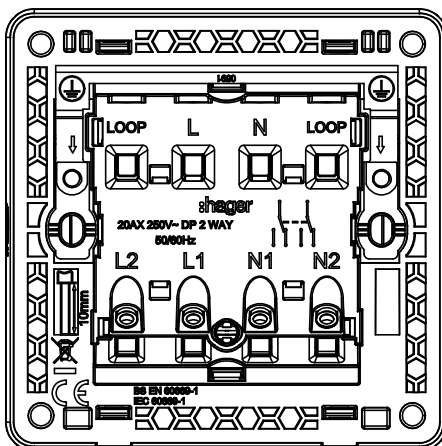
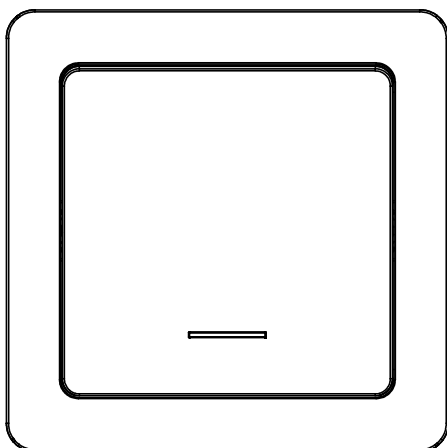


Hager Inspire 20A DP 1 gang 2 way switch

Cat. no: WGCL2D12N



1. USE

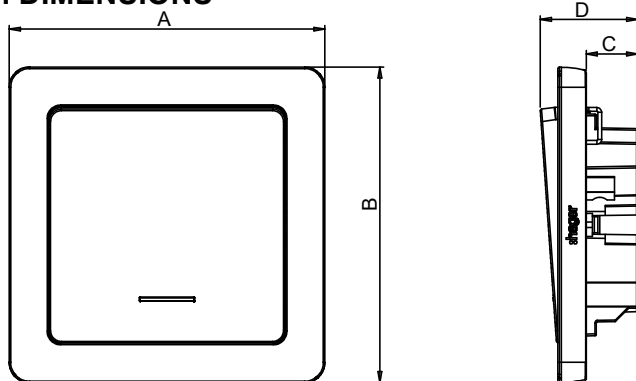
Device to switch on/off the load
Completed delivery supply with two 37mm fixing screws
for flush-mounting or surface-mounting boxes

2. RANGE

20A DP 1 gang 2 way switches with LED

White	Interstellar Grey	Noble Bronze	Knight black	Elegant Gold
WGCL2D12N	WGCXL2D12NAS	WGCXL2D12NNB	WGCXL2D12NKB	WGCXL2D12NEG

3. DIMENSIONS



Description	A	B	C	D
WGML2D12N**	86mm	86mm	14mm	26.6mm

4. TECHNICAL CHARACTERISTICS

4.1 Rating

Current: 20A
Voltage: 250V~, 50/60Hz

4.2 Material for key components

Frame: White Polycarbonate with UV resistance (PC) RAL9010
Front plate: White Polycarbonate with UV resistance (PC) RAL9010
Base: Nylon, Color Pantone: 429U
Moving Contact: Brass Strip, Onlay
Silver Revit: AgNi10

4.3 Material characteristic

White: PC
Color: Lacquering on white PC
Self-extinguishing: 650°C / 30s

4.4 Climatic characteristics

Storage temperature: -20°C to +70°C
Operating temperature: -5°C to +45°C

5. STANDARDS AND APPROVALS

Certifications: Accredited lab certificate/ test report
Standards: IEC 60669-1

6. MAINTENANCE

Surface cleaning with a cloth.
Do not use: acetone, tar remover, trichlorethylene.
Maintenance with the following products: Hexane(EN 60669-1),
Methylated spirit, Soapy water, Diluted ammonia, Bleach diluted
to 10%, window - cleaning products.

Caution: A preliminary test should be carried out if other specific
cleaning products are to be used.

7. CONNECTIONS

Distance of installation hole: 60.3mm
Terminal capacity: 2 x 4.0mm²
Cable Strip length: 12mm
Maximum mounting screw torque: 0.6 N.m
Contact terminal screw torque: 1.2N.m

