

**P630 - x630
HXW030H**

Information
Marking of MCCB and accessory must be in the same direction

OK

NOK

Tools

- 4 / 5
- PH 1 / PH 2
- 7 / 16
- 4 mm
-
-

3P - 4P

M5-16 mm

- x4
- x2
- x4
- x2
- x1
- x1
- x1

3P - 4P

Dimensions (mm):
 Top width: 138, 125
 Left height: 234, 144,5
 Right height: 184
 Right width: 199, 102, 58

01 3P - 4P

TRIP

PUSH TO TRIP

PH1 (+)

A, B

02a MCCB1 + MCCB2

PH1 (+)

PUSH TO TRIP

B, A

02b

A, B, C, D

03

x630

In: 630A
Icu (415V-): 25kA

x630

P630

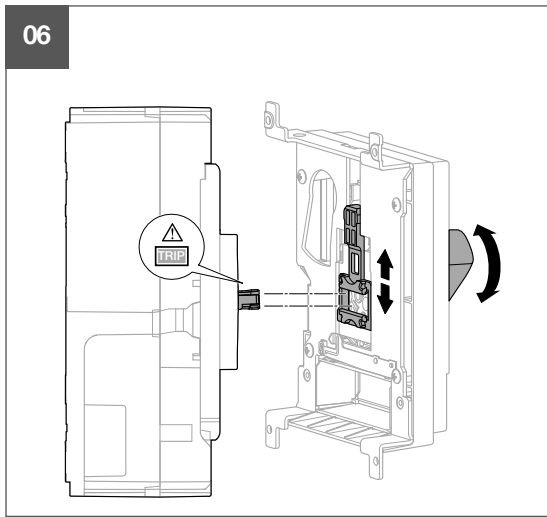
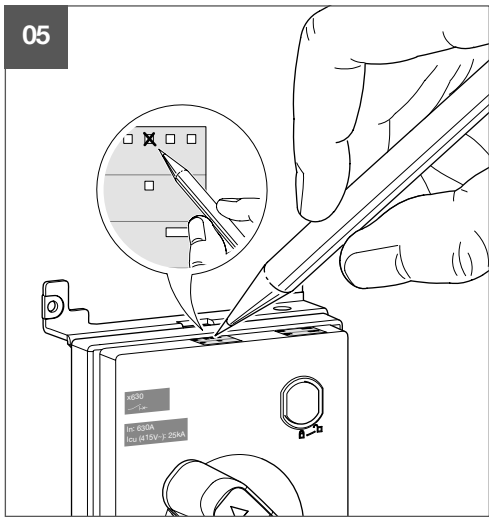
TRIP

PUSH TO TRIP

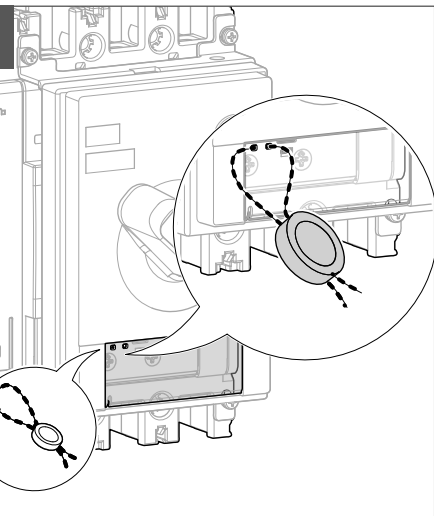
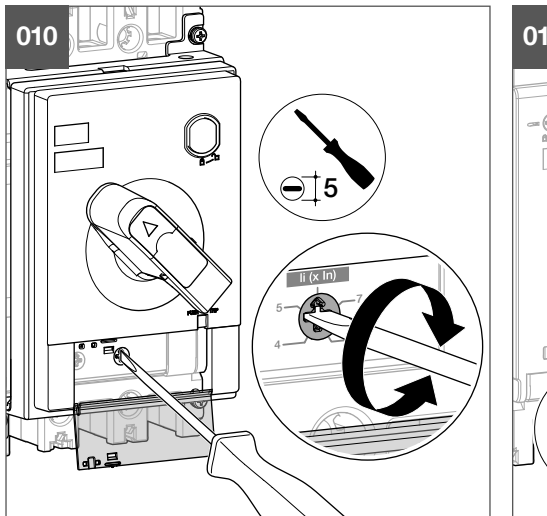
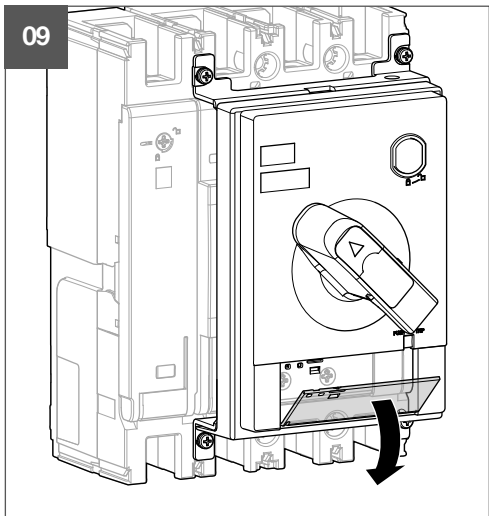
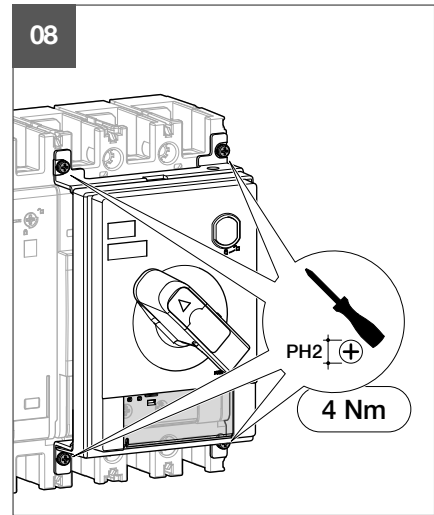
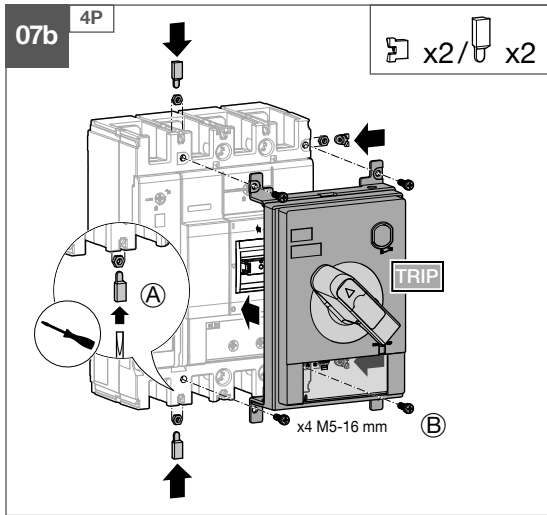
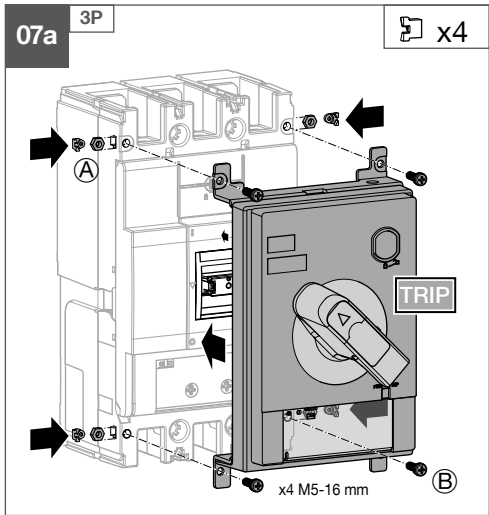
04

x630

In: 630A
Icu (415V-): 25kA



Information
 Marking of MCCB and accessory must be in the same direction

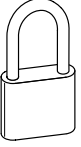


T 3P - 4P

Information
 Compulsary step to test product

01 3P - 4P

| | | | |
|---|--|------|---|
| ① | | ON | ✓ |
| ② | | TRIP | - |
| ③ | | OFF | ✓ |



01 3P - 4P

02

Ø 5,5-8mm
max.
x3

HXW888H

01 3P - 4P

02

PH2 (+)
1 Nm

03

04

| | | |
|--|----|-----|
| | ON | OFF |
| | | |
| | | |

16
3,5 Nm

05

| | | |
|--|----|-----|
| | ON | OFF |
| | | |
| | | |

HXW032H

x1

x1

M5-16 mm

x1

x1

x2

x4

01 3P - 4P

| | | | | |
|--|-------|-------|----|------|
| | | | | |
| | RESET | TRIP | ON | OFF |
| | | | | |
| | OFF | RESET | ON | TRIP |

