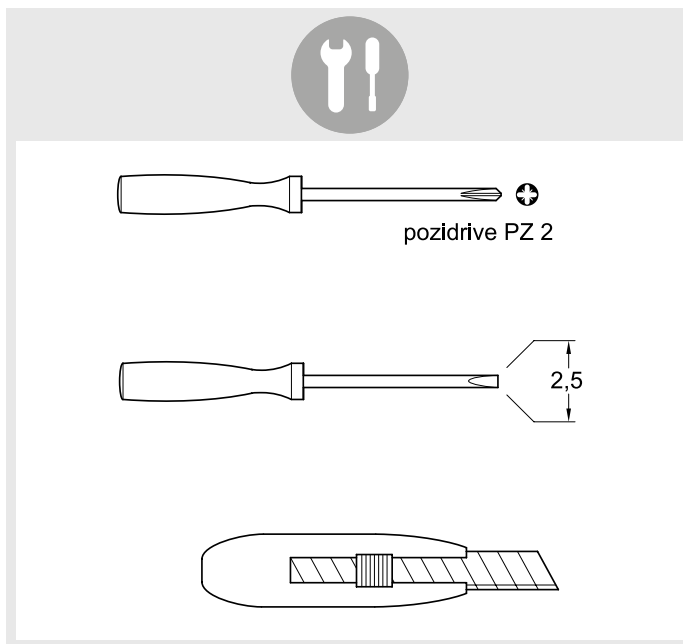
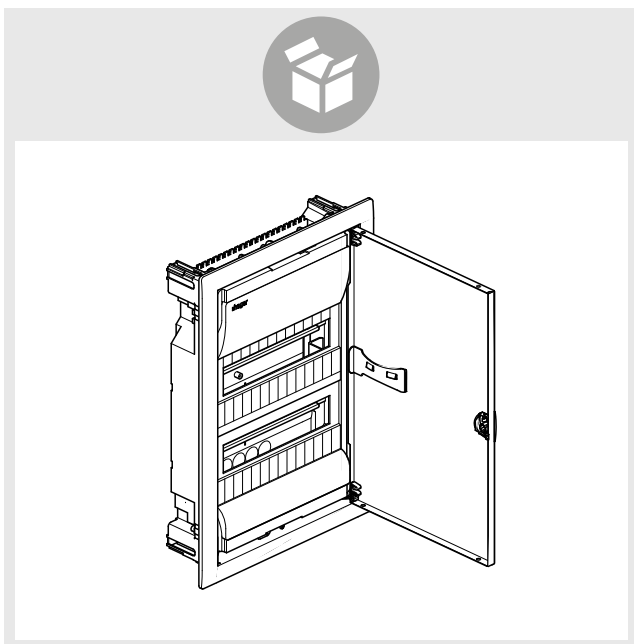


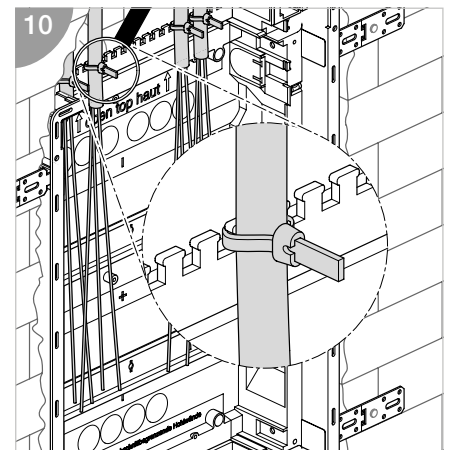
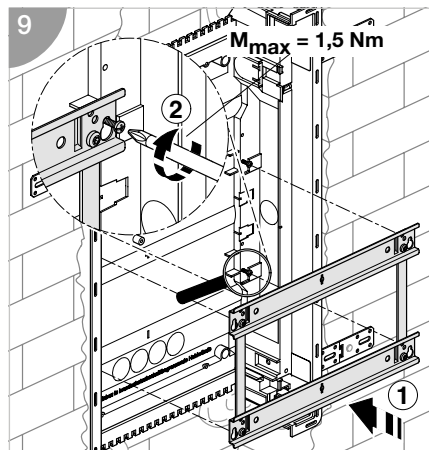
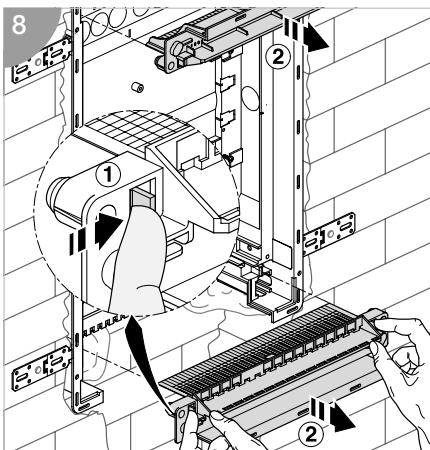
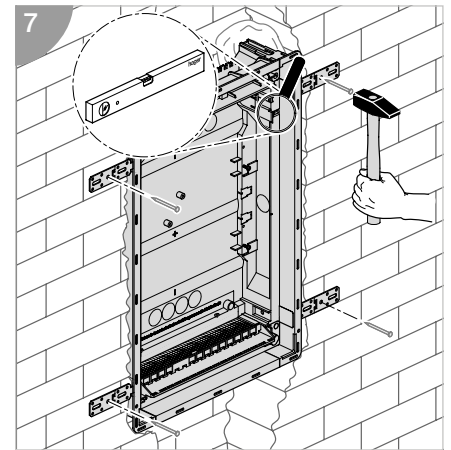
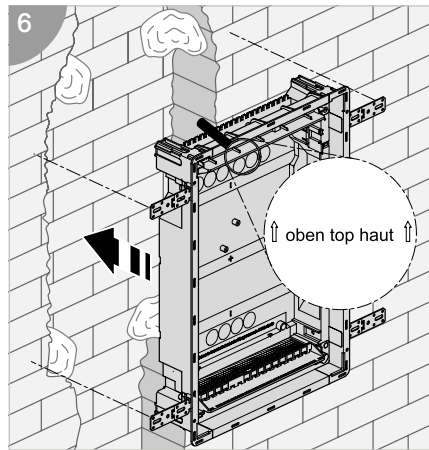
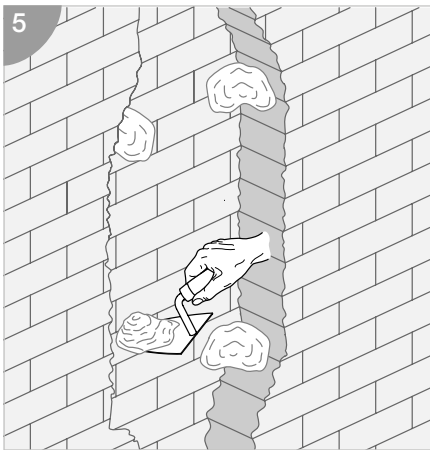
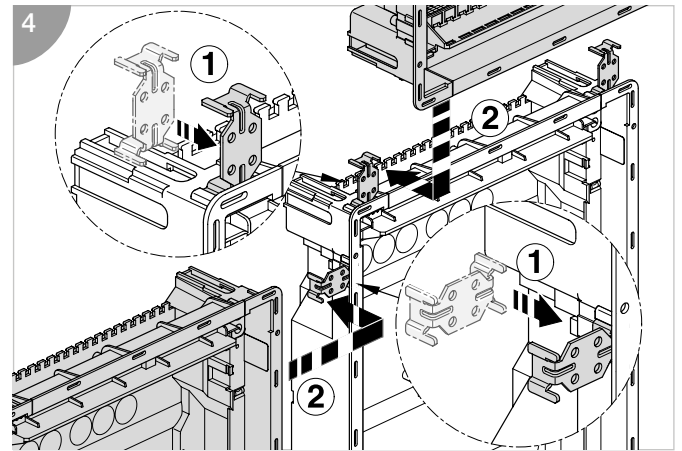
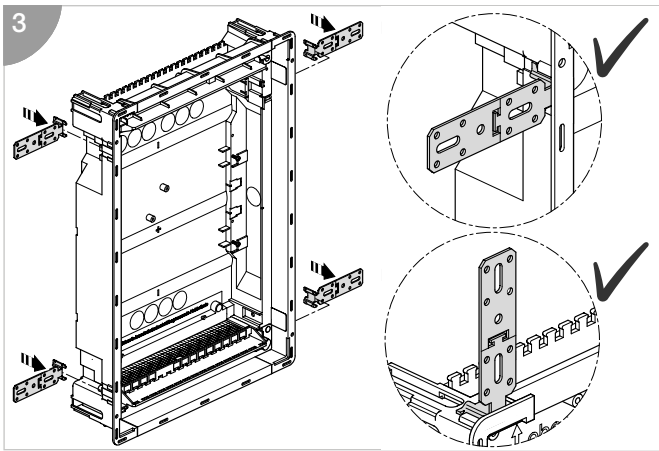
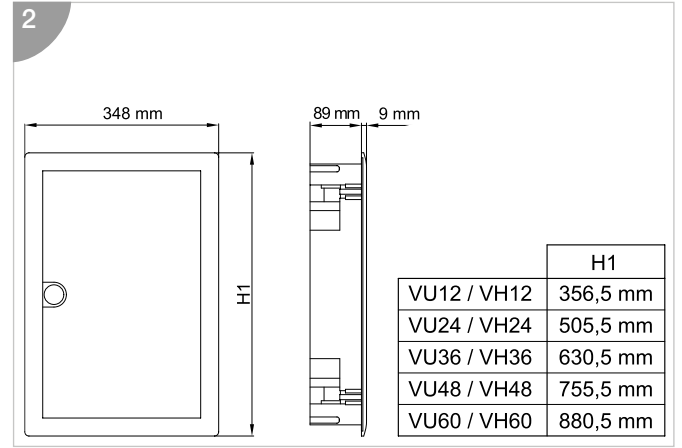
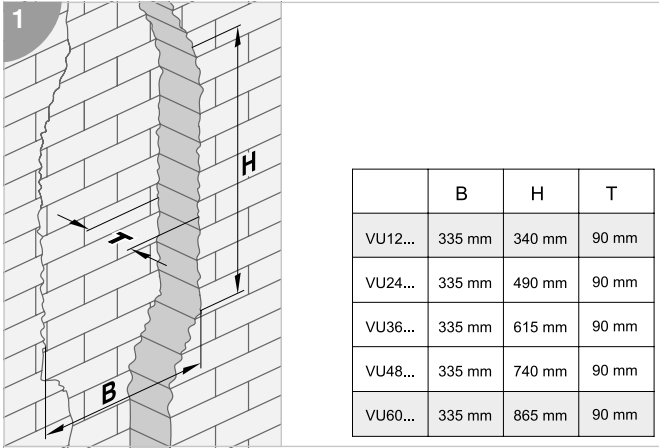
- | | |
|--|-------------------------------------|
| Ⓜ GB Mounting instructions | Ⓜ HR Upute za montažu |
| Ⓜ FR Notice d'instructions | Ⓜ HU Szerelési útmutató |
| Ⓜ DE Montageanleitung | Ⓜ LT Montavimo instrukcija |
| Ⓜ NL Montage instructie | Ⓜ LV Montāžas instrukcija |
| Ⓜ DK Monteringsvejledning | Ⓜ PL Instrukcja montażowa |
| Ⓜ FI Asennusohje | Ⓜ RO Instrucțiuni de montare |
| Ⓜ NO Montasjeanvisning | Ⓜ SK Návod na montáž |
| Ⓜ SE Monteringsinstruktioner | Ⓜ RU Указания по установке |
| Ⓜ IT Istruzioni di montaggio | Ⓜ BG Инструкции за монтаж |
| Ⓜ ES Instrucciones de montaje | Ⓜ GR Οδηγίες χώνευσης |
| Ⓜ PT Instruções de montagem | Ⓜ SI Navodilo za montažo |
| Ⓜ CZ Montážní návod | Ⓜ EE Paigaldusjuhised |
| Ⓜ BA Uputstvo za montažu | Ⓜ IS Leiðbeiningar |
| Ⓜ UK Інструкції з установки | Ⓜ AR دليل التركيب |

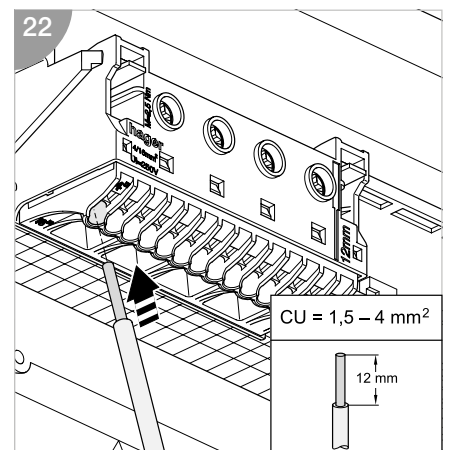
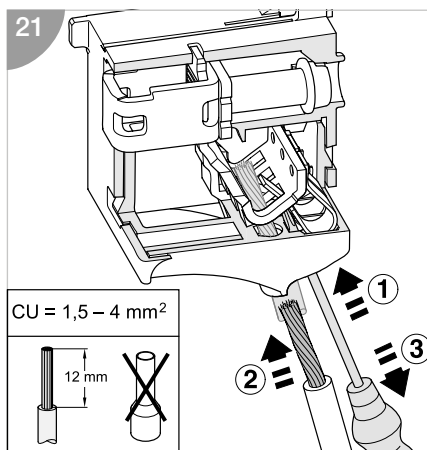
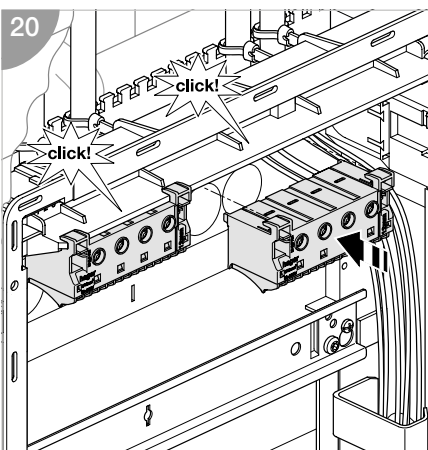
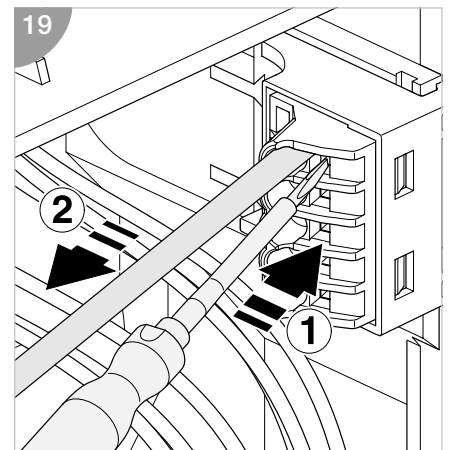
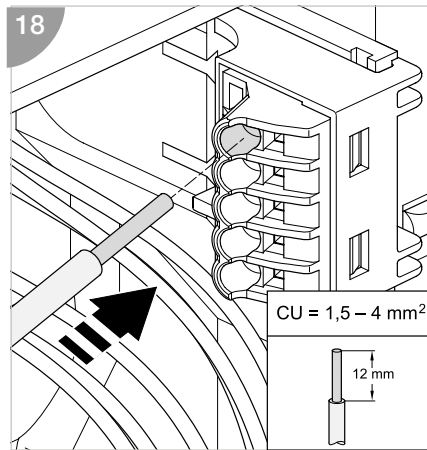
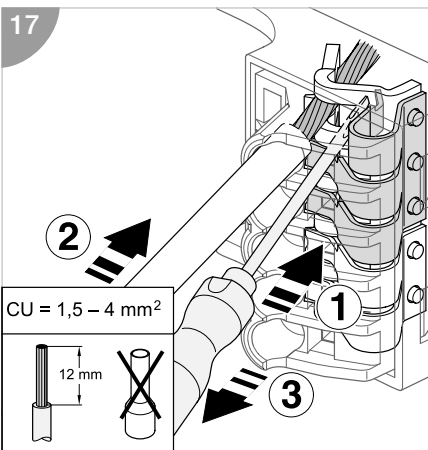
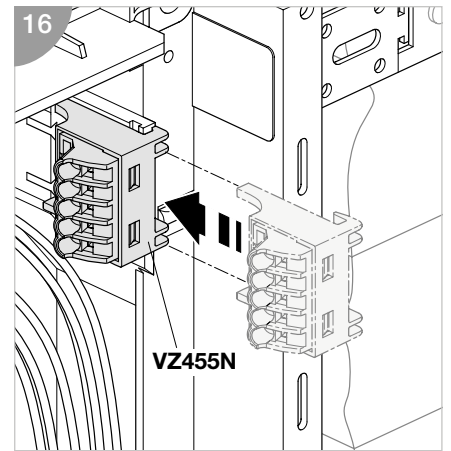
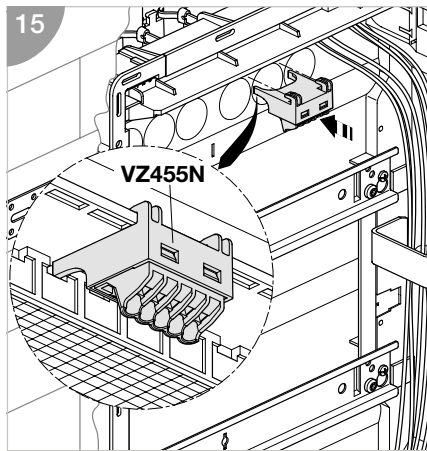
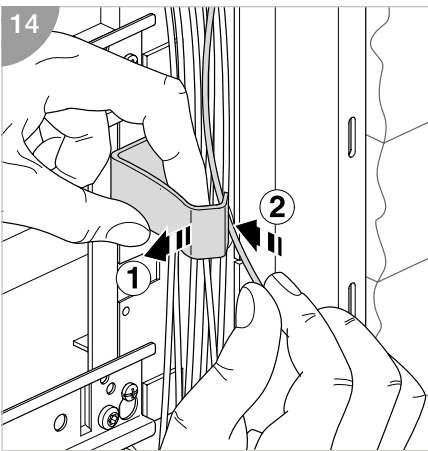
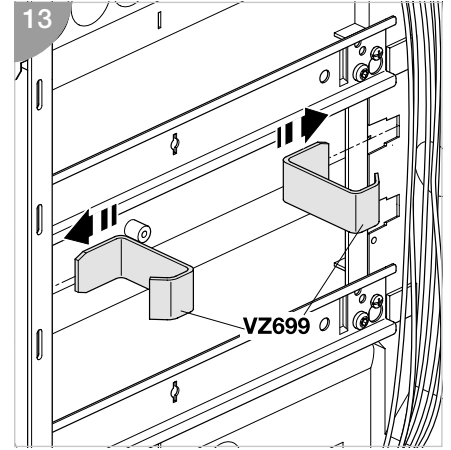
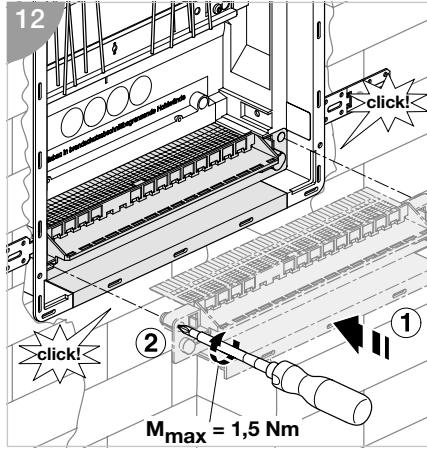
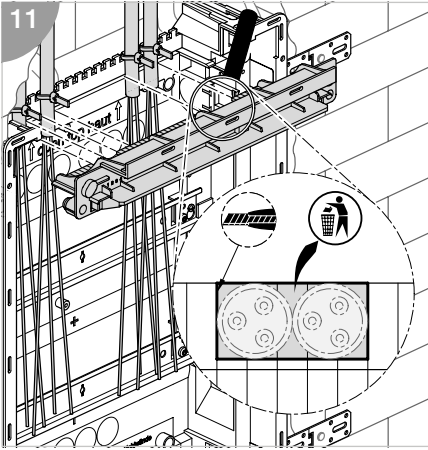
Volta

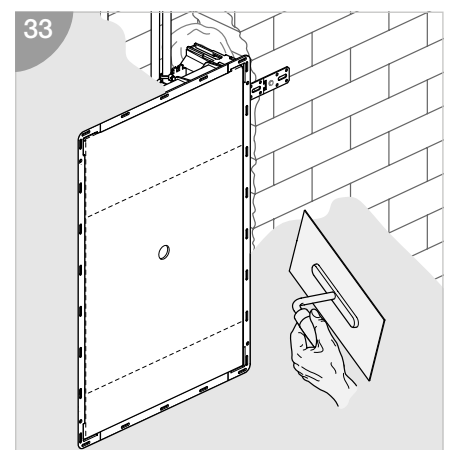
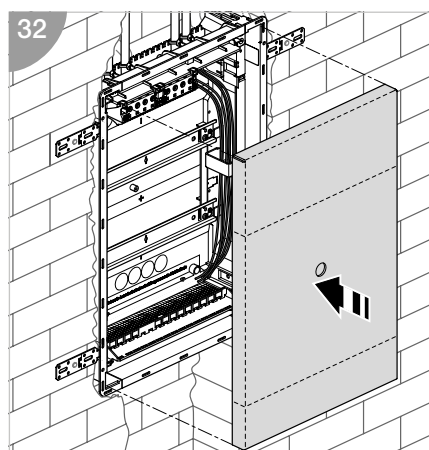
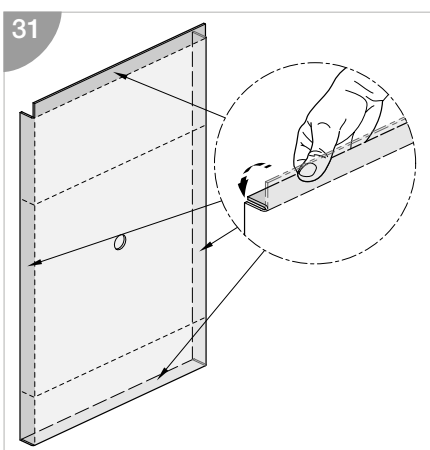
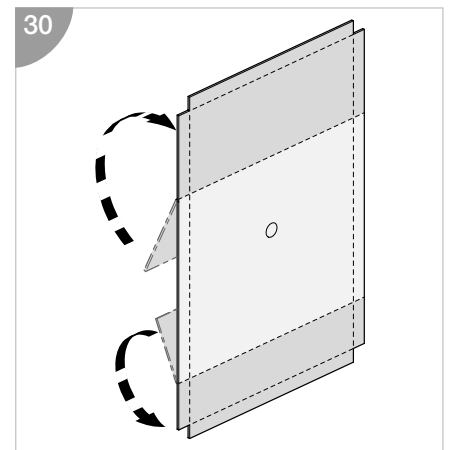
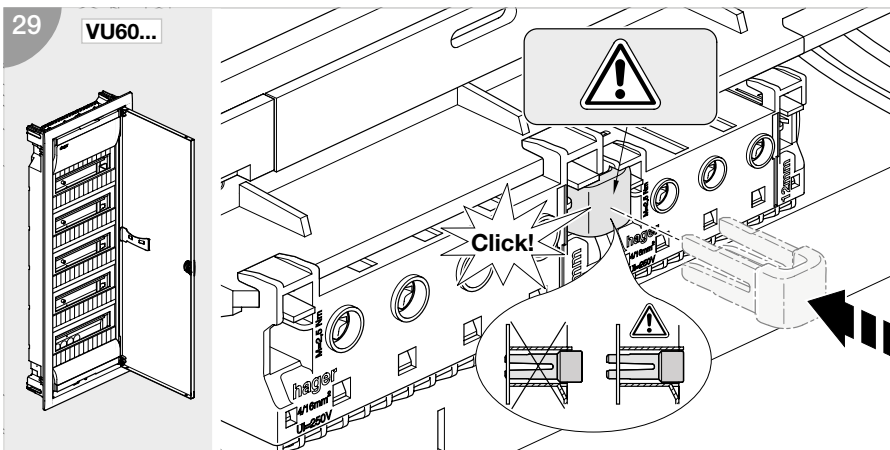
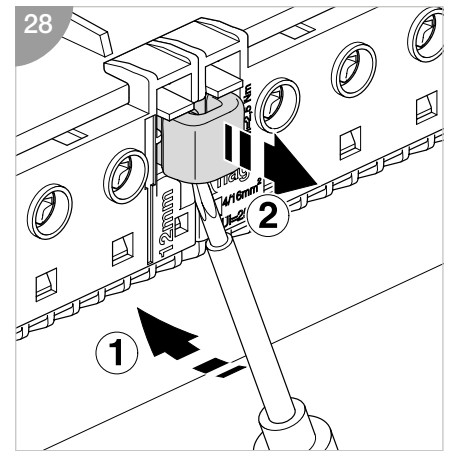
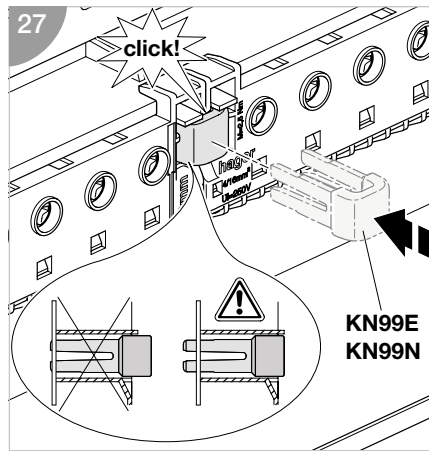
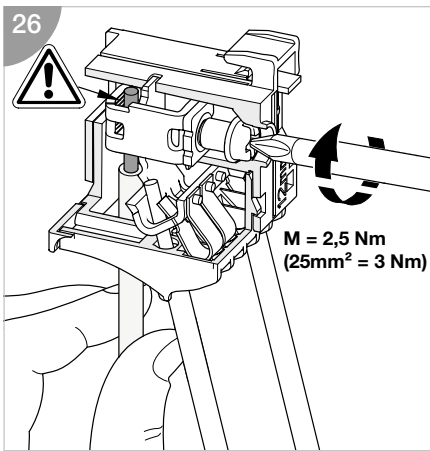
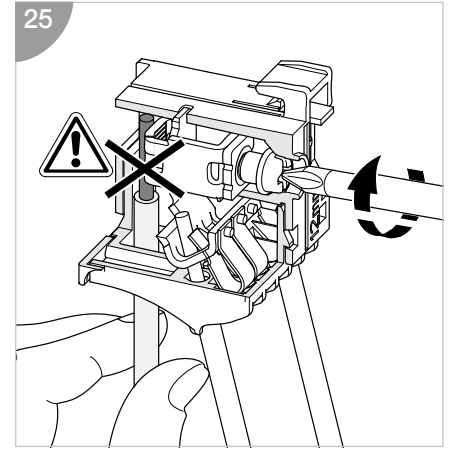
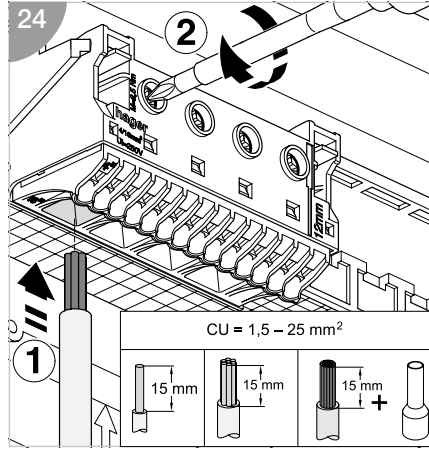
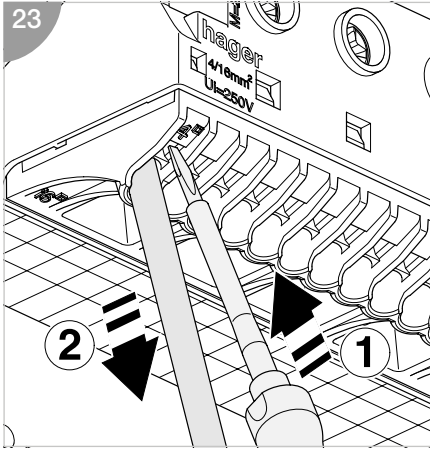
EN 60670-24 (PD)

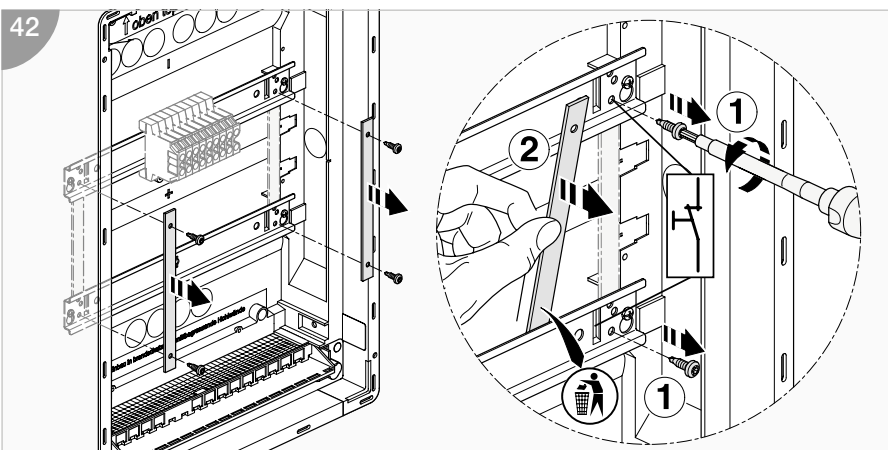
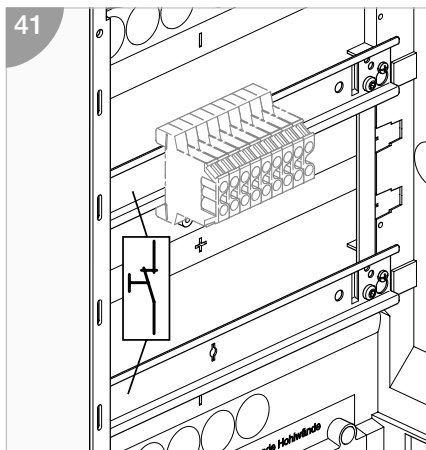
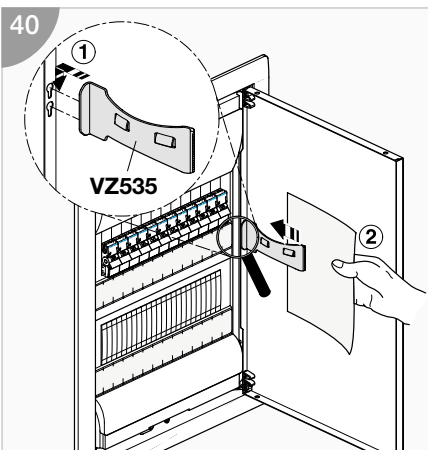
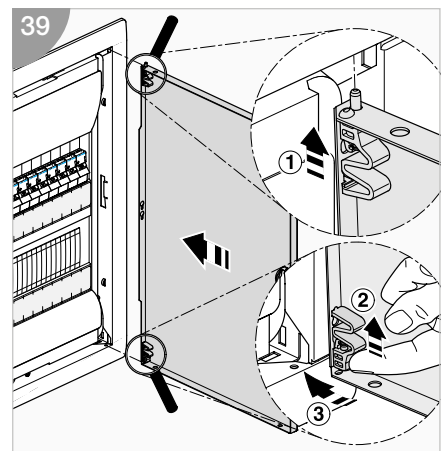
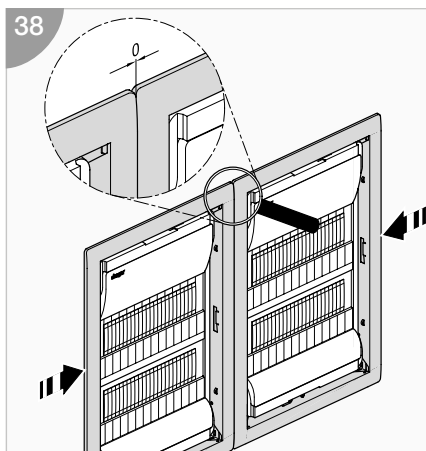
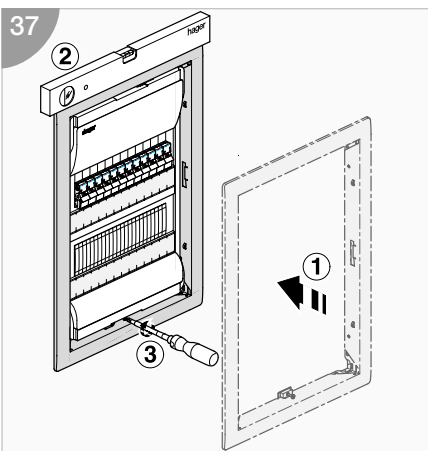
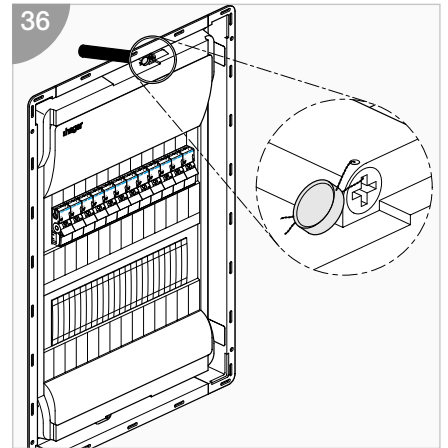
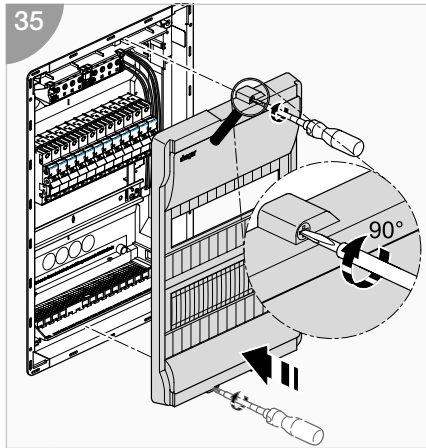
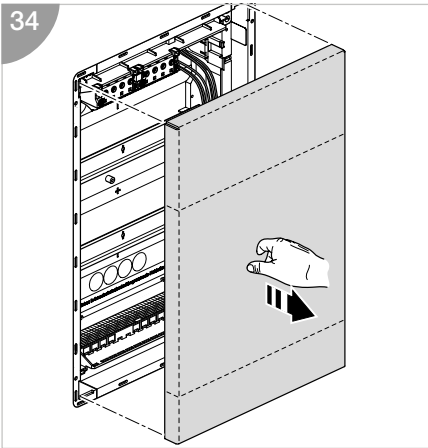
www.hager.com

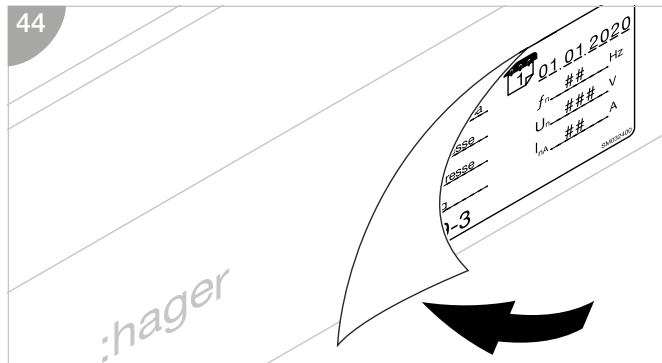
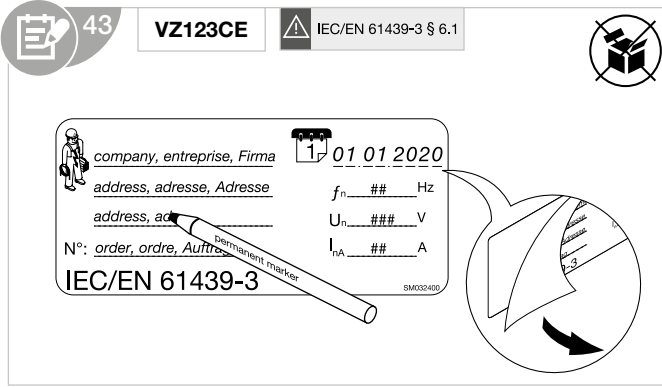












- ⚠
- (EN) The Assembly (DBO) designated markings must be completed as specified in IEC/EN 61539 - 3 clause 6.1.
 - (FR) Le marquage de l'installation à basse-tension (DBO) doit être renseigné avec les spécifications techniques indiquées dans la norme IEC/EN 61439-3 paragraphe 6.1.
 - (DE) Die Schaltgerätekombination (DBO) muss mit den Aufschriften nach IEC/EN 61439-3 Abschnitt 6.1 gekennzeichnet werden.
 - (NL) De voor Assemblage (DBO) bestemde markeringen moeten worden ingevuld zoals gespecificeerd in IEC/EN 61439-3 paragraaf 6.1.
 - (DA) DBO-mærkningerne (markeringsmærkerne) skal udfyldes som specificeret i IEC/EN 61439-3 punkt 6.1.
 - (FI) Maallikkokäyttöön tarkoitettujen jakokeskusten merkinnät on täytettävä IEC/EN 61439-3:n lausekkeen 6.1 mukaisesti.
 - (NO) Enhetens (fordelingskort) merking må være komplett som spesifisert i IEC/EN 61439-3 klausul 6.1.
 - (SV) Kopplingsutrustningen måste märkas med etikett i enlighet med IEC / EN 61439-3 avsnitt 6.1.
 - (IT) Le marcature designate per l'assemblaggio (DBO) devono essere integrate come specificato nella norma IEC/EN 61439-3 sezione 6.1.
 - (ES) El conjunto de la apartamenta debe estar señalizado/marcado de acuerdo con la norma IEC 61439-3 sección 6.1.
 - (PT) As marcações designadas devem ser realizadas conforme especificado na IEC/EN 61439-3 cláusula 6.1 para o Conjunto (DBO).
 - (CS) Označení určená pro montáž (DBO) musí být vyplněny podle specifikace normy IEC/EN 61439-3, článku 6.1.
 - (HR) Oznake za skapanje (DBO) moraju biti navedene prema preporukama iz IEC/EN 61439-3, klauzule 6.1.
 - (HU) A berendezés (DBO) felirati megjelölésének összhangban kell lennie az IEC/EN 61439-3 szabvány 6.1 pontjában foglaltakkal.
 - (LT) Montžas (DBO) apžimėjumiai jāatbilst IEC/NE 61439-3 6.1. punkta prasībām.
 - (LV) Montāžas (DBO) marķējums jāiekļauj Standarta IEC/EN 61439-3 6.1. punktā norādītā informācija.
 - (PL) Rozdzielnica musi być oznakowana zgodnie z IEC/EN 61439-3 rozdział 6.1.
 - (RO) Marcajele destinate ansamblurilor (DBO) trebuie completate conform precizărilor din standardul IEC/EN 61439-3 punctul 6.1.
 - (RU) Должна быть выполнена маркировка для сборки (Распределительные щиты, обслуживаемые лицами без специальной квалификации (DBO)) в соответствии с требованиями стандарта IEC/EN 61439-3, пункт 6.1.
 - (BG) Обозначенията за монтаж (DBO) трябва да отговарят на изискванията, посочени в IEC/EN 61439-3, точка 6.1.
 - (EL) Οι σημάνσεις συναρμολόγησης (DBO) πρέπει να συμμορφώνονται με τη ρήτρα 6.1 του προτύπου IEC/EN 61439-3.
 - (SL) Oznake, določene za sestav (DBO), morajo biti izpolnjene v skladu s klavzulo 6.1 standarda IEC/EN 61439-3.
 - (SK) Označenia určené pre montáž (DBO) musia byť vyplnené podľa špecifikácie normy IEC/EN 61439-3, článku 6.1.
 - (EE) Koosteete (DBO) lisatud märgised peavad vastama standardi IEC/EN 61439-3 punktile 6.1.
 - (IS) Merkingar samsetningar (DBO) verða að vera útfylltar eins og tilgreint er í ákvæði 6.1 í IEC/EN 61439-3.
 - (AR) التركيب للجهد المنخفض (DBO) مع المواصفات التقنية ضمن المعيار IEC/EN 61439-3 فقرة 6.1 يجب تدوين علامات