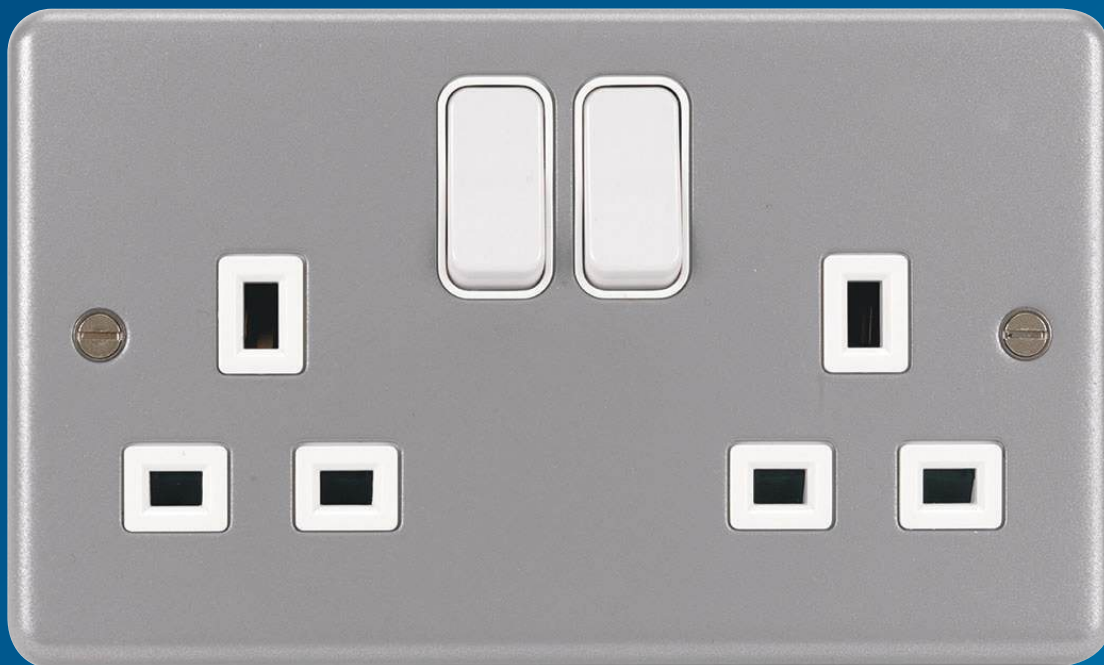


Sollysta Wiring Accessories Metalclad



:hager

Sollysta Metalclad

For those tougher environments, the sollysta metalclad range still remains loyal to its origins. Combining durability as well as aesthetics, the back boxes are made from specially hardened steel to maintain their rigidity, the faceplates overlap a lip on the back box sitting flush for a smooth high quality finish, and a strong two tab knock out makes installation as easy as possible.

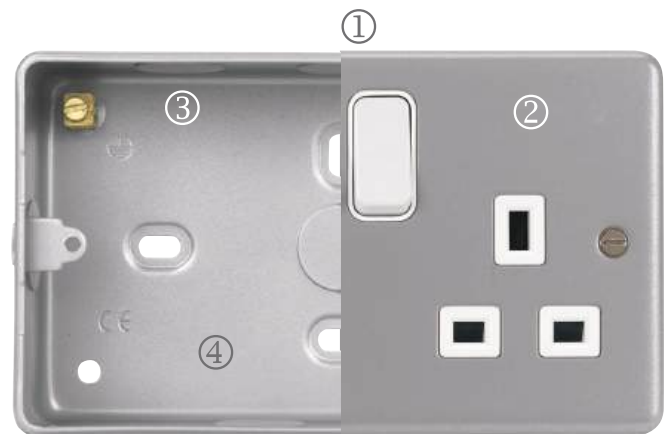
Traditional grey finish with back boxes, the range gives you maximum flexibility in both application and installation.

The advantages for you:

- Knock outs easily and cleanly removed
- Products are independently tested and certified by independent laboratories
- Traditional grey finish to suit all applications
- Reliable for all applications where a hard wearing product is required
- Same sollysta mechanisms inside

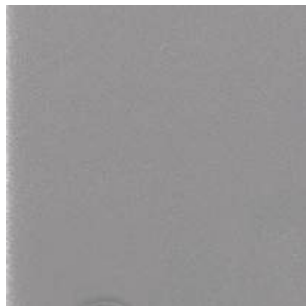
Technical data:

- Switches comply with IEC 60669-1
- Sockets comply with SS145 and SS472
- Sockets with USB comply with BS1363-2
- Boxes manufactured from specially hardened SGCC steel.
- Patented LOOP terminal to allow Neutral looping at the switch.
- Surface finish is durable epoxy powder coat.



1. Secure Fit

Front plates sit flush to the edge of the back box and locate positively with the lip around the edge.



2. Finish

The metalclad range is tough and durable thanks to the epoxy painted finish.



3. Back Box Knockouts

All of our back boxes are available with knockouts.



4. Back Box Rigidity

All of our back boxes are made from hardened steel to ensure increased rigidity.



WPPS12

- Unique patented LOOP terminal to allow Neutral looping at the switch.
- Complies with IEC 60669-1, a.c. only.
- 'X' rated - No need to derate for fluorescent loads.

- Two way switches can be wired either 1 way or 2 way.
- Clear terminal markings:
1-way L1
2-way L2

- Capacity of each terminal 2 x 4.0mm² conductors.



WPPS22



WPPS32

	Pack/ Qty	Cat. Ref.
50A Double Pole Switch 1 Gang cw LED	10	WPDP50N
20A Double Pole Switch cw Flex Outlet	10	WPDP84FO
20A Double Pole Switch cw LED & Flex Outlet	10	WPDP84FON
10AX 1 Gang 2 Way Wall Switch	10	WPPS12
10AX 2 Gang 2 Way Wall Switch	10	WPPS22
10AX 3 Gang 2 Way Wall Switch	10	WPPS32
10AX Push Switch	10	WPPS12R
10AX 1 Gang 2 Way Wall Switch Red Rocker & Box cw KOs	10	WPPS12RR
10AX 2 Gang 2 Way Wall Switch Red Rocker & Box cw KOs	10	WPPS22RR
10AX 3 Gang 2 Way Wall Switch Red Rocker & Box cw KOs	10	WPPS32RR
10AX Intermediate Switch	10	WPPS16



WPSS81

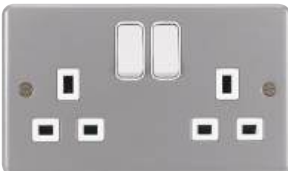


WPSS115

Metalclad Grey Socket Outlets

- Unique patented 3 part safety shutter.
- Complies with
SS145-2: 13A SSO
BS1363-2: 13A SSO with USB
SS472 : 15A SSO
- Double pole switching mechanism on switched sockets.
- Twin socket comes with twin earth as standard.
- USB output 5Vdc 2.4A total max. with intelligent connection ensures optimum charging performance.
- All terminal screws grouped in-line and upward facing for ease of installation.

- Clear printed and engraved terminal markings.
- Capacity of each terminal: 3 x 4mm² conductors.



WPSS82



WPSS82-USB

	Pack/ Qty	Cat. Ref.
1 Gang Double Pole Switched Socket	10	WPSS81
1 Gang Double Pole Switched Socket cw LED	10	WPSS81N
2 Gang Double Pole Switched Socket	5	WPSS82
2 Gang Double Pole Switched Socket cw LED	5	WPSS82N
2 Gang Double Pole Switched Socket Outboard Rockers	5	WPSS82O
15A Double Pole Switched Socket	10	WPSS115
1 Gang DP Switched Socket Red Rocker & Box cw KOs	10	WPSS81R
2 Gang DP Switched Socket Red Rocker & Box cw KOs	5	WPSS82R
2 Gang DP Switched Socket with Twin USB Ports & Box cw KOs	5	WPSS82-USB



WPSSU83FON

Metalclad Grey 13A Fused Connection Units

- Complies with BS 1363-4.
- Cable clamp accommodates up to 1.5mm² flexible cord.
- Single screw fast fix cable clamp.
- Available with LED light indicator in rocker.
- All terminal screws upward facing for ease of installation.
- Clearly printed terminal markings.

- Capacity of each terminal 2 x 6.0 mm² conductors.

	Pack/ Qty	Cat. Ref.
13A FCU UnSwitched cw Flex Outlet	10	WPSU83FO
13A FCU Switched cw Flex Outlet	10	WPSSU83FO
13A FCU Switched cw LED & Flex Outlet	10	WPSSU83FON



WPP1EU

- Carrier plates facilitate installation of industry standard modular data outlets.
- Easy to configure for all applications.
- Easy installation of module to plate.
- Robust retention of modules in operation.
- Quick release of modules for maintenance.

	Size (Gang)	Pack/ Qty	Cat. Ref.
1 Module Euro Plate	1	10	WPP1EU
2 Module Euro Plate	1	10	WPP2EU
4 Module Euro Plate	2	5	WPP4EU



WMMRJ45



WMMUSB

Euro Modules

	No. of Modules	Pack/ Qty	Cat. Ref.
RJ11	1	1	WMMRJ11
RJ45 Cat 6 UTP	1	1	WMMRJ45
Single Satellite & Connector	1	1	WMMSAT
Twin USB	2	1	WMMUSB
Single Blank Euromodule	1	1	WMMB



WPGP1

Metalclad Grey Grid Plates

	Size (Gang)	Pack/ Qty	Cat. Ref.
Grid plate 1 Gang	1	10	WPGP1
Grid plate 2 Gang	1	10	WPGP2
Grid plate 3 Gang	2	5	WPGP3
Grid plate 4 Gang	2	5	WPGP4
Grid plate 6 Gang	2 x 2 Rows	5	WPGP6
Grid plate 8 Gang	2 x 2 Rows	5	WPGP8



WGMF1

WGMF2

Grid Frame

Frames for Grid Plates

	No. of Modules	Pack/ Qty	Cat. Ref.
1 Gang Frame	1	20	WGMF1
2 Gang Frame	1	20	WGMF2
3/4 Gang Frame	1	10	WGMF34



WGMF34



WMGSDP2

Grid Switches

	No. of Modules	Pack/ Qty	Cat. Ref.
20A 1 Way Double Pole Switch - Standard	1	10	WMGSDP2



WPB140KO

Metalclad Grey Accessories

	Pack/ Qty	Cat. Ref.
Single Backbox	10	WPB140KO
Twin Backbox	5	WPB240KO
Two Row Twin Backbox	5	WPB6840KO
Single Blank Plate	10	WPP1BKO
Twin Blank Plate	5	WPP2BKO