

Hager Dream

Hager Desire

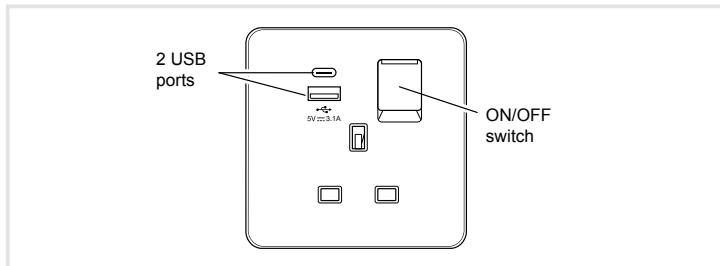
## Safety instructions

Electrical equipment must only be installed and assembled by a qualified electrician in accordance with the relevant installation standards, regulations, directives and safety and accident prevention directives of the country.

Failure to comply with these installation instructions may result in damage to the device, fire or other hazards.

## Function

Single switched BS socket outlet with USB charging unit for electrical installations in buildings.



### Socket features:

The BS socket outlet is compatible with BS 1363-1 plugs. It can be switched ON/OFF using the integrated single pole switch.


### USB features:

- The USB port charging unit is suitable for charging most portable electronic devices connected via a USB type A or type C plug.
- It is supplied independently of the ON/OFF switch position.
- With dynamic load recognition
- Short-circuit proof and overload proof

### Correct use

- For the flush-mounted installation in standard wall boxes (recommended wall box depth  $\geq 35$  mm).
- Only suitable for use in indoor areas with no drip and no spray water.

## Charging portable electronic devices

- Insert USB type A or type C connector of the charging cable into one USB charging port.
-  Two portable devices can be charged simultaneously with a maximum total charging current of 3.1 A. The charging current split is determined by the devices to be charged.



### CAUTION!

Use only approved charging cables and connectors.

- If the charging process is complete or shall be interrupted, pull out charging cable.

## Technical data

Rated voltage:	230 V~
Frequency:	50/60 Hz
Socket rated current:	13 A
Switch type:	single pole
Conductor cross-section of screw terminals:	min. 1 x 1.5 mm <sup>2</sup> ... max. 2 x 4 mm <sup>2</sup>
Distance of fixing holes:	60.3 mm
Socket compliance:	BS 1363-2 and SS 145-2
USB output:	5.0 V d.c.
USB output power:	15.5 W
USB output current when operating both sockets (total):	max. 3.1 A
USB output current when operating only type A port:	max. 2.4 A
USB output current when operating only type C port:	max. 3.0 A
Standby power consumption of USB unit:	< 100 mW
USB compliance:	IEC 62368-1
USB average active efficiency:	> 82%
USB efficiency at low load (10%):	73%
Operating temperature:	-5 ... +35°C
Relative humidity (no condensation):	0 % ... 95%

## Information for electricians

### Installation and electrical connection



### DANGER!

Touching live parts can result in an electric shock.

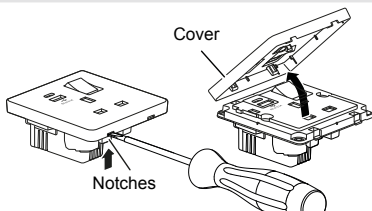
An electric shock can lead to death.

Disconnect the connecting cables before working on the device and cover all live parts in the area!

## Preparing the device for installation

The device is delivered with a transparent dust protection sticker. This sticker must remain on the device during the time of installation.

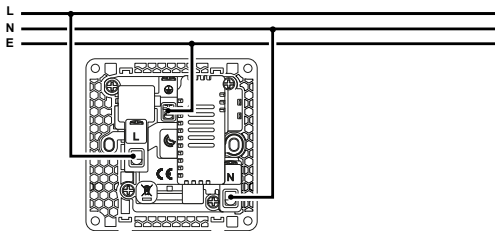
1



- Carefully loosen the cover on the notches with a flat-blade screwdriver or similar tool (1).
- Lift up and remove the cover.

## Connecting the device

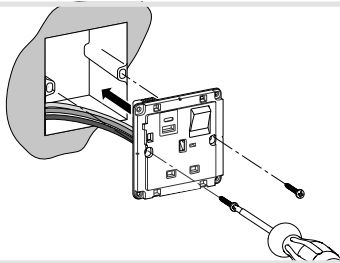
2



- Strip connection cables approx. 10 ... 12 mm.
- Wire the device according to the connection diagram (2).

## Installing the device into the wall box

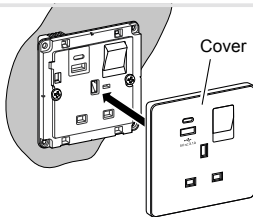
3



- After wiring, fix the device with the two screws attached into the wall box (3).

## Assembling the cover

4



- Place the cover in the correct position and snap it onto the device (4).
- Remove the dust protection sticker.

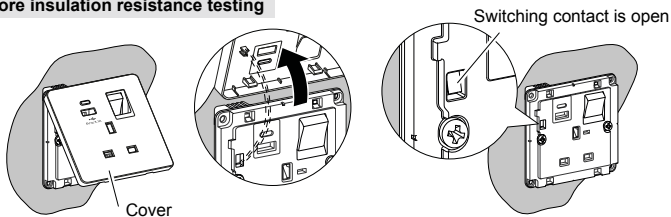
## Preparing the device for insulation resistance testing



### WARNING!

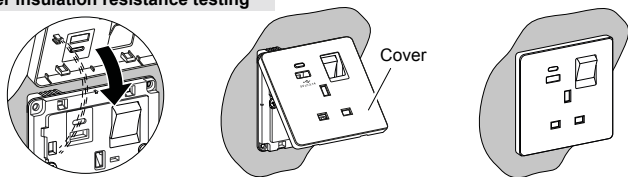
To avoid possible damage to the product or spurious insulation readings, please **DISCONNECT** the USB charging unit before carrying out insulation resistance testing (see figure below)!

### Before insulation resistance testing



- Remove the cover.  
An internal switching contact opens. The USB charging unit is disconnected.

### After insulation resistance testing



- After insulation resistance testing, place the cover in the correct position and snap it back onto the device.  
The internal switching contact is closed. The USB charging unit is reconnected.