

## **Safety instructions**

Electrical equipment must only be installed and assembled by a qualified electrician in accordance with the relevant installation standards, regulations, directives and safety and accident prevention directives of the country.

Failure to comply with these installation instructions may result in damage to the device, fire or other hazards.

## **Function**

Mechanical press switches for electrical installations in buildings.

Bell switch comes with imprinted bell symbol for door bell applications.

## **Correct use**

- For the flush-mounted installation in standard wall boxes (recommended wall box depth  $\geq 35$  mm).
- Only suitable for use in indoor areas with no drip and no spray water.

## **Technical data**

Rated voltage:	250 V~
Frequency:	50/60 Hz
Rated current:	max. 10 A
Conductor cross-section of screw terminals:	max. 3 x 1.5 mm <sup>2</sup>
Distance of fixing holes:	60.3 mm
Switch compliance:	BS EN 60669-1, IEC 60669-1

## Information for electricians

### Installation and electrical connection



#### **DANGER!**

Touching live parts can result in an electric shock.

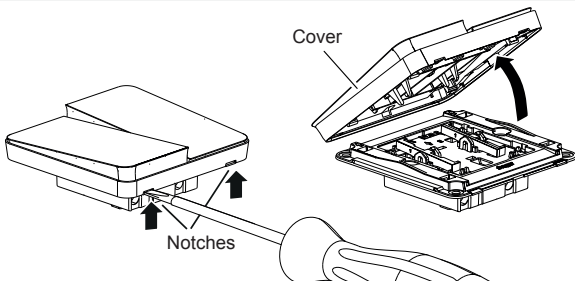
An electric shock can lead to death.

Disconnect the connecting cables before working on the device and cover all live parts in the area!

## Preparing the device for installation

(for example "10A 2gang press switch")

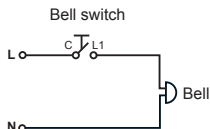
1



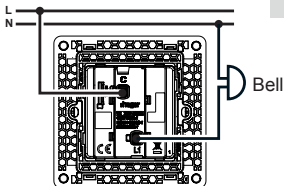
- Carefully loosen the cover on the notches with a flat-blade screwdriver (1).
- Remove the cover.

## Connecting the device

2A

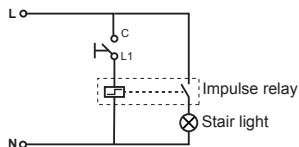


General circuit diagram

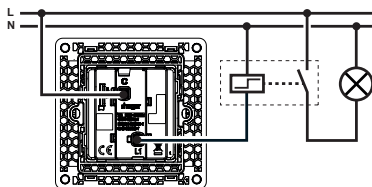


Bell switch

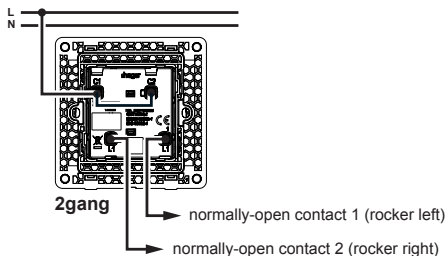
Bell switch



General circuit diagram (Example)



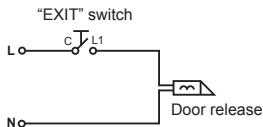
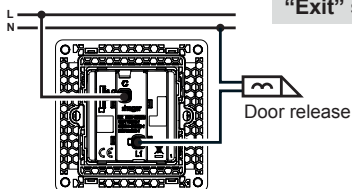
1gang



2gang

normally-open contact 1 (rocker left)

normally-open contact 2 (rocker right)

General circuit diagram  
(Example)

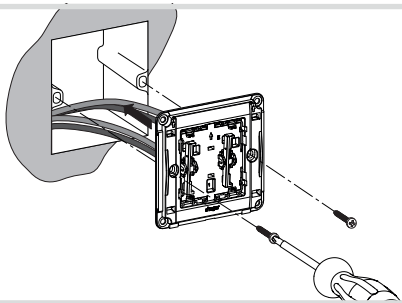
Press switch marked “EXIT”

- Strip connection cables approx. 10 ... 12 mm.
- Wire the switch according to the appropriate wiring diagram (2A or 2B or 2C).

## Installing the device into the wall box

(for example "10A 2gang press switch")

3

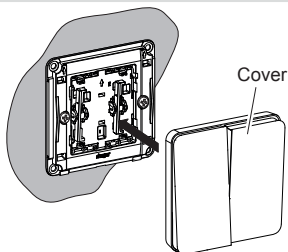


- After wiring, fix the device with the two screws attached into the wall box (3).

## Assembling the cover

(for example "10A 2gang press switch")

4



- Snap the cover onto the device (4).

**i** 2-5gang frames are available for multiple combinations.